

REVISION			
LTR	DESCRIPTION	DATE	APPROVED
1	ENGINEERING RELEASE	08/25/10	V.VADUVA
2	ENGINEERING RELEASE	01/20/11	V.VADUVA

# NOTES:

## UNLESS OTHERWISE SPECIFIED:

1. MATERIAL: MULTILAYER. OVERALL STACKUP AS SHOWN. TYPE RO4350 OR ARLON 25FR, HALF OUNCE COPPER BOTH SIDES. FR4 TO BE USED AS FILLER TO MEET CRITICAL OVERALL THICKNESS.
2. FINISH: GOLD PLATE PER ASTM B-488, TYPE III, CODE A, 8 TO 40 MICROINCHES, OVER NICKEL PER QQ-N-290, 100 MICROINCHES MINIMUM.
3. PLATED THRU HOLES: .001 MINIMUM WALL THICKNESS.
4. HOLE SIZES AND POSITIONS PER ARTWORK AND/OR DRILL FILE.
5. ALL HOLES TO BE LOCATED WITHIN  $\pm 0.003$  OF THE CENTER OF THE PAD OR OTHER TRUE POSITION.
6. FRONT TO BACK REGISTRATION  $\pm 0.003$  MAX.
7. BOARD WARPAGE:  $< .010$  PER LINEAR INCH.
8. SILKSCREEN BOTH SIDES WITH WHITE EPOXY INK.
9. SOLDERMASK: LPI SOLDERMASK BOTH SIDES. COLOR: GREEN REGISTRATION:  $\pm 0.004$  MAX.
10. "SIZE" IN DRILL LEGEND IS IN MILS AND REFERS TO FINISHED HOLE SIZE.
11. MANUFACTURE PER IPC-6012 CLASS 2.

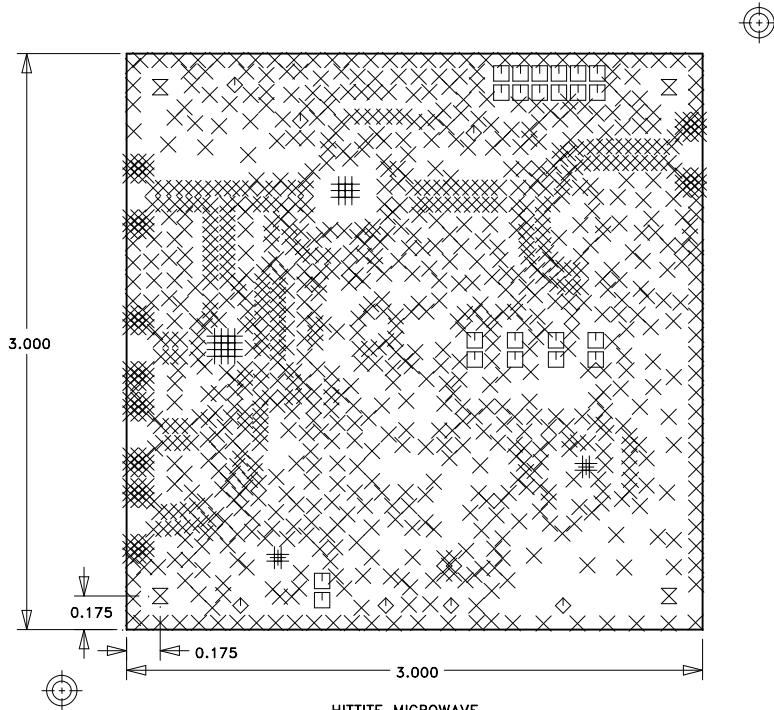
## SPECIAL REQUIREMENTS:

12. CRITICAL LINE WIDTH =  $.016 \pm .001$  ON METAL-01. ADJUST PROCESS TO ACHIEVE WIDTH.

## VENDOR NOTES:

13. VENDOR MAY ADD E-TEST STAMP TO PCB. VENDOR SHALL NOT ADD NAME, LOGO, DATE CODE, UL LISTING OR ANY OTHER MARKING TO ANY VISIBLE LAYER.
14. BOARDS MUST PASS VISUAL INSPECTION PER IPC-A-600 CLASS 2.

SIZE	QTY	SYM	PLATED	TOL
10	35	+	YES	+/-3
14	1004	X	YES	+/-3
40	22	□	YES	+/-3
63	7	◇	YES	+/-3
125	4	⊗	YES	+/-3



HITTITE MICROWAVE  
131926-2  
FABRICATION

	SILKSCREEN
	SOLDERMASK
.062/.067	METAL-01 1/2oz Cu ARLON OR ROGERS .010 $\pm 0.001$ (CRITICAL)
	METAL-02 1/2oz Cu PREPREG AS REQUIRED
	METAL-03 1/2 oz Cu FR4 CORE A/R (SEE NOTE 1)
	METAL-04 1/2 oz Cu
	SOLDERMASK-02
	SILKSCREEN-02

## STACKUP

UNLESS OTHERWISE SPECIFIED:	
DIMENSIONS ARE IN INCHES [mm]	
DRAWING PRACTICES PER ASME Y14.100	
INTERPRET DIMENSIONS & TOLERANCES PER ASME Y14.5-2009	
TOLERANCES:	
.XX	$\pm .01$
.XXX	$\pm .005$
.XXXX	$\pm .0020$
ANGLES	$\pm .5$ DEG.

DRAWN BY V.VADUVA	DATE DRN 08/09/10
CHECKED BY D.YOUNG	14/09/10
ENGINEER	
THIRD ANGLE PROJECTION	
DO NOT SCALE DRAWING	

PROPRIETARY TO HITTITE MICROWAVE CORPORATION



HITTITE MICROWAVE CORPORATION  
20 Alpha Road  
Chelmsford, MA 01824

TITLE PCB, CUSTOMER EVAL HMC703LP4E			
SIZE A	CODE ID NO. 1CN88	DWG NO. 131926	REV 2
SCALE: 1:1		WT:	SHEET: 1 OF 1

NEXT ASSY

USED ON