

REVISIONS			
REV	DESCRIPTION	DATE	APPROVED
A	INITIAL RELEASE	27 JUL 22	X
B	ECR - 110852	10 JAN 23	X

HOLE TOLERANCE
UNLESS SPECIFIED
PLATED: +/- .003
NON PLATED: +/- .002

FINISHED HOLES IN MILS				
ALL UNITS ARE IN MILS				
FIGURE	SIZE	PLATED	QTY	TOLERANCE/NOTES
+	10.0	PLATED	369	
□	45.0	PLATED	2	
○	100.0	PLATED	6	
⬡	213.0	PLATED	4	
△	187.0	NON-PLATED	4	

PRIMARY SIDE									
UNLESS OTHERWISE SPECIFIED DIMENSIONS ARE IN INCHES TOLERANCES DECIMALS FRACTIONS ANGLES XX +/- .010 +/- 1/32 +/- 2 XXX +/- .005 .XXXX +/- .0050			APPROVAL		DATE		<div><div><div></div></div><div>ANALOG DEVICES</div></div> <div>WWM DIVISION 804 WOBURN STREET WILMINGTON, MA 01887</div>		
			TEMPLATE ENGINEER		X ddMMMyy				
			HARDWARE SERVICES		X ddMMMyy				
			HARDWARE SYSTEMS		X ddMMMyy				
			X		X				
MATERIAL			TEST ENGINEER		X		TITLE FABRICATION EVAL-LTC7066-AZ		
			X		ddMMMyy				
			COMPONENT ENGINEER		X				
			X		ddMMMyy				
			TEST PROCESS		X				
FINISH			HARDWARE RELEASE		X		SIZE FSCM NO DRAWING NUMBER REV C 24355 09-072558 B		
			X		ddMMMyy				
			DESIGNER		K.CHAN				
			X		ddMMMyy				
			PTD ENGINEER		X				
DO NOT SCALE DWG			CHECKER		X		SCALE 1 / 1 SHEET 1 OF 2		
			X		ddMMMyy				
			X		ddMMMyy				

NOTES: UNLESS OTHERWISE SPECIFIED

1. DIMENSIONS ARE IN INCHES (EXCEPT WHERE NOTED).
ALL DOCUMENTS & SPECIFICATIONS REFERRED TO BELOW SHOULD BE THE LATEST REVISIONS.

MATERIAL: HOMOGENOUS MATERIALS IN THIS BOARD SHALL BE COMPLAINT WITH THE EU DIRECTIVE 2002/95/EC

2. BOARD MATERIAL:(USE CHECKED ITEMS)
- (X) ISOLA 370HR OR S1000-2 OR IT180 OR EQUIVALENT
() ISOLA-FR408HR OR EQUIVALENT
() ISOLA IS410
() MEGTRON 6
() NELCO-4000-13
() ROGERS 4350B
() ROGERS 3003
() ARLON 85N
() EM370D
() OTHER _____
3. ALL LAMINATES & BONDING MATERIALS SHOULD BE SELECTED FROM IPC-4101 OR IPC-4103,(TG>170 DEGC TD>300 DEGC)
UL FLAMMABILITY RATING 94V-0. BOARD MATERIAL & CONSTRUCTION SHALL MEET THE REQUIREMENTS OF UL796/UL796F.
4. REFER TO IPC-6010 SERIES, CLASS 2 FOR FABRICATION. WORKMANSHIP SHALL CONFORM TO IPC-A-600, CLASS 2.
5. REFER TO LAMINATION DIAGRAM FOR OVERALL BOARD THICKNESS, TOLERANCE APPLIES AFTER ALL LAMINATION AND PLATING PROCESSES. FINISHED THICKNESS MEASURED FROM TOP COPPER TO BOTTOM COPPER.
6. BOW & TWIST NOT TO EXCEED 0.0075 INCHES (0.75%) PER LINEAR INCH AND SHOULD BE MEASURED PER IPC-TM-650, METHOD 2.4.22.
7. ACCEPTABILITY PER ADI SPECIFICATION TST00115.

TOOLING:

8. IMPEDANCE REQUIREMENTS: IF NO STACKUP IS DEFINED, THE VENDOR IS ALLOWED TO ADJUST THE DIELECTRIC THICKNESS & TRACE WIDTHS TO MEET THE IMPEDANCE REQUIREMENT. IF SPECIFIED, THE VENDOR MUST MEET THE REQUIREMENTS LISTED IN THE IMPEDANCE TABLE. ANY ADJUSTMENT MADE TO THE DEFINED STACKUP, TRACE WIDTH & SPACING THAT IMPACT THE REQUIREMENTS MUST HAVE WRITTEN APPROVAL FROM ADI.
9. FILLET OPTIONS TO ENHANCE RELIABILITY AT PAD JUNCTIONS WHERE SPACING PERMITS.
() FILLETS ALLOWED
(X) FILLETS NOT ALLOWED
10. THIEVING:
() VENDOR MAY ADD THIEVING TO COMPENSATE FOR LOW COPPER DENSITY AREAS MAINTAINING A MINIMUM 0.100 INCH CLEARANCE FROM ALL COPPER FEATURES.
(X) VENDOR MAY NOT ADD THIEVING TO COMPENSATE FOR LOW COPPER DENSITY AREAS.
11. LAYER TO LAYER REGISTRATION SHALL BE WITHIN 0.003 INCHES.

FINISH:

12. DRILL SIZES ARE FINISHED HOLE SIZES. ALL HOLES SHALL BE LOCATED WITHIN 0.005 INCHES DTP,UNLESS SPECIFIED.
MINIMUM BARREL PLATING OF 0.001 INCHES. PLATED HOLES SHALL NOT BE ROUGH OR IRREGULAR SO AS TO HINDER PROPER SOLDER WICKING. BARREL RELIEF ON SOLDERMASK ALLOWED IN UNFILLED VIA IN PAD HOLES.
13. PLATING SPECIFICATION:
(X) REFER TO LAMINATION DIAGRAM FOR FINISHED COPPER WEIGHT/THICKNESS REQUIRMENTS
THE STARTING COPPER WEIGHT/THICKNESS CAN VARY AS LONG AS THE FINISHED COPPER WEIGHT/THICKNESS IS NOT LESS THAN THE SPECIFIED VALUE.
14. SURFACE FINISH:
(X) IMMERSION GOLD (ENIG) 1.58-3.94 MICRO INCHES OVER 118-236 MICRO INCHES MIN. OF ELECTROLESS NICKEL PER IPC-4552
() OSP (ORGANIC SOLDERABILITY PRESERVATIVE)
() IMMERSION SILVER
() SOFT WIRE BONDABLE GOLD 30-50 MICRO INCHES OF SOFT WIRE
BONDABLE GOLD OVER 100-150 MICRO INCHES OF NICKEL
() EDGE CONNECTOR FINGERS ARE TO BE PLATED WITH 100 MICRO-INCHES(.0001") OF LOW STRESS NICKEL UNDER 30 MICRO-INCHES (.0003") OF GOLD
() OTHER _____
15. SOLDERMASK:
SOLDERMASK OVER BARE COPPER OR BARE GOLD (BOTH SIDES) TO MEET IPC-SM-840.
IF PRESENT,DO NOT MODIFY SOLDERMASK DEFINED PADS (MASK OPENINGS LESS THAN COPPER PAD) WITHOUT APPROVAL.
(X) LPI
() OTHER _____

COLOR
() GREEN
(X) OTHER BLUE
16. APPLY SILKSCREEN TO BOTH SIDES USING A NON-CONDUCTIVE, EPOXY BASED INK PER ARTWORK.
(X) WHITE
() OTHER

TESTING:

17. FINAL ELECTRICAL TEST TO BE PERFORMED USING PROVIDED IPC-D-356A NETLIST OR ODB++ FORMAT FILE.
THE PCB SHALL HAVE A VERIFICATION STAMP.
18. A TIME DOMAIN REFLECTOMETER REPORT (TDR) FOR EACH IMPEDANCE CONTROLLED LAYER & A CERTIFICATE OF COMPLIANCE SHALL BE PROVIDED BY VENDOR AT TIME OF SHIPMENT. INSTANCES WHERE TDR TESTING CAN'T BE PERFORMED BECAUSE THE TRACE LENGTH IS TOO SHORT ON THE OUTER LAYERS AT THE PIN ESCAPES IS ACCEPTABLE. ALL OTHER INSTANCES MUST BE REPORTED.

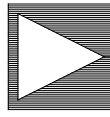
MISCELLANEOUS:

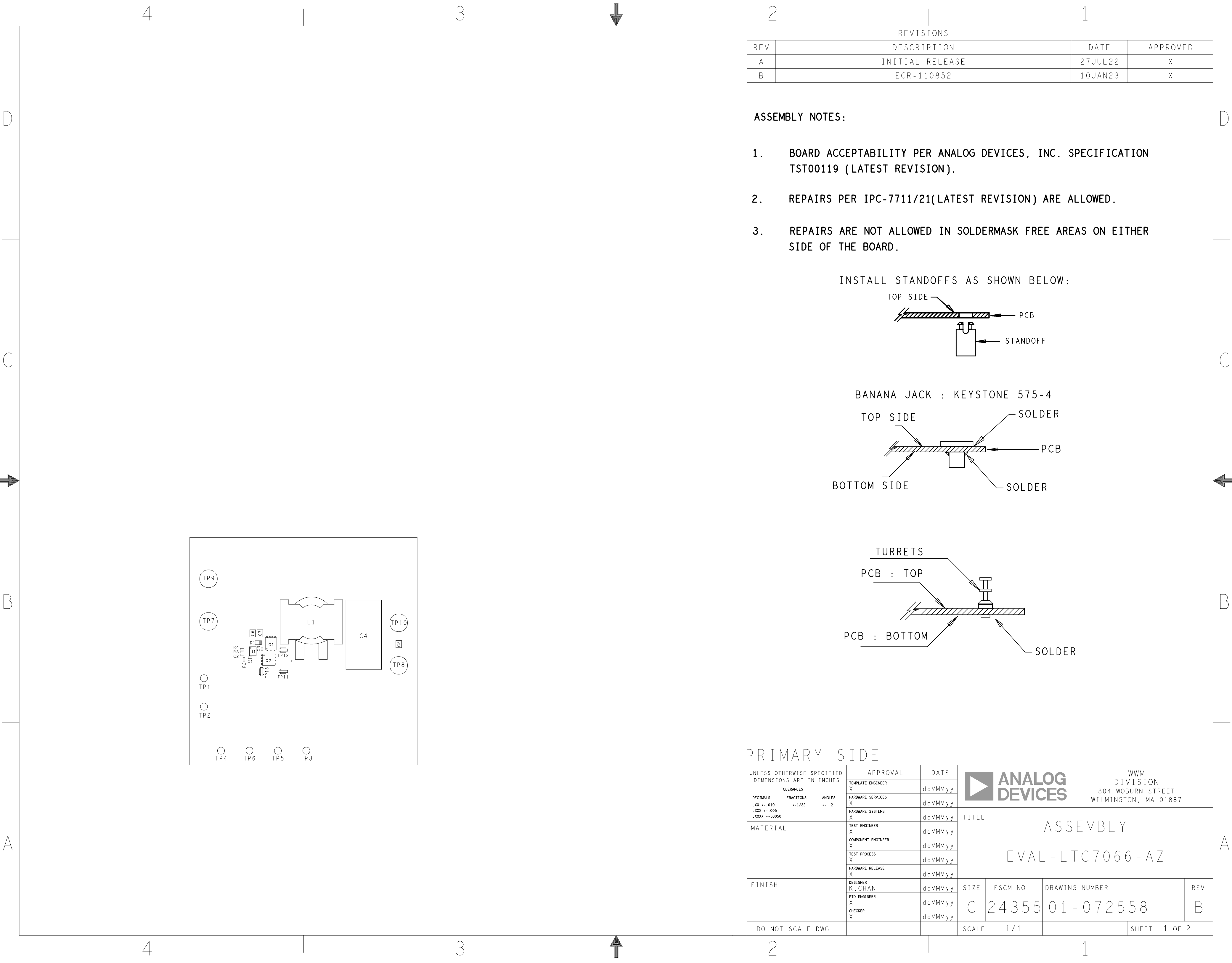
19. IF PRESENT, ALL BLIND/BURIED VIAS WITH AN ASPECT RATIO <1:1 TO BE PLATED SHUT WITH COPPER WHEN USED AS VIA-IN-PAD OR AS A STACKED VIA. BLIND/BURIED VIAS WITH AN ASPECT RATIO >1:1 TO BE FILLED WITH NON-CONDUCTIVE EPOXY.
20. FOR VIA FILL INFORMATION REFER TO DRILL CHART:
() NON-CONDUCTIVE EPOXY FILL ALL 0.XXXX INCHES DRILLED VIAS
() COPPER FILL ALL 0.XXXX INCHES DRILLED VIAS
21. INTENTIONAL SHORTS:
IF AN INTENTIONAL SHORT REPORT IS SUPPLIED AND DOES NOT MATCH THE FAB DATA THEN ADI APPROVAL IS REQUIRED.
22. PENNUTS:
() PENNUTS TO BE INSTALLED BY FABRICATOR
() PENNUTS NOT TO BE INSTALLED BY FABRICATOR
(X) NOT APPLICABLE
23. MANUFACTURER TO ETCH/STAMP WITH PERMANENT NON-CONDUCTIVE INK
ON SECONDARY SIDE UNLESS OTHERWISE SPECIFIED:
A. UL CODE-FLAMMABILITY RATING FOR THOSE APPROVED MATERIALS(IF APPLICABLE)
B. DATE CODE
C. LOT NUMBER
D. MANUFACTURER LOGO
25. PANELIZATION:
BOARDS TO BE SHIPPED IN ARRAY AND KEPT INTACT
PANEL TO BE SUBJECTED TO CUSTOMERS APPROVAL
PANEL SOLDER PASTE STENCIL GERBER TO BE PROVIDED TO ANALOG
27. MINIMUM DESIGN LINE WIDTH IS .006 INCH.
28. MINIMUM DESIGN LINE SPACING IS .006 INCH.

FAB NOTES REVISION: 2ND NOVEMBER 2022

LAMINATION DIAGRAM				
LAYER NUMBER	LAYER NAME	COPPER THICKNESS (OZ, INCH)	DIELECTRIC THICKNESS (INCH)	MATERIALS
1	TOP	2 OZ, 0.0028"		FINAL CU (THICKNESS AFTER PLATING)
			~0.0039	ISOLA 370HR/EQUIVALENT
2	LAYER_2	1 OZ, 0.0014" MIN		CU CLAD
				ISOLA 370HR/EQUIVALENT
3	LAYER_3	1 OZ, 0.0014" MIN		CU CLAD
			~0.0039	ISOLA 370HR/EQUIVALENT
4	BOTTOM	2 OZ, 0.0028"		FINAL CU (THICKNESS AFTER PLATING)
THE FINISHED PCB THICKNESS TO BE: 0.062" +/-10%				

PRIMARY SIDE

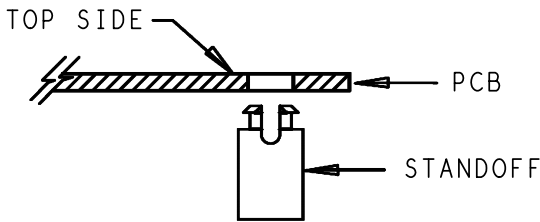
	ANALOG DEVICES	WWM DIVISION 804 WOBURN STREET WILMINGTON, MA 01887	
SIZE	FSCM NO	DRAWING NUMBER	REV
C	24355	09-072558	B
SCALE	1 / 1	SHEET 2 OF 2	



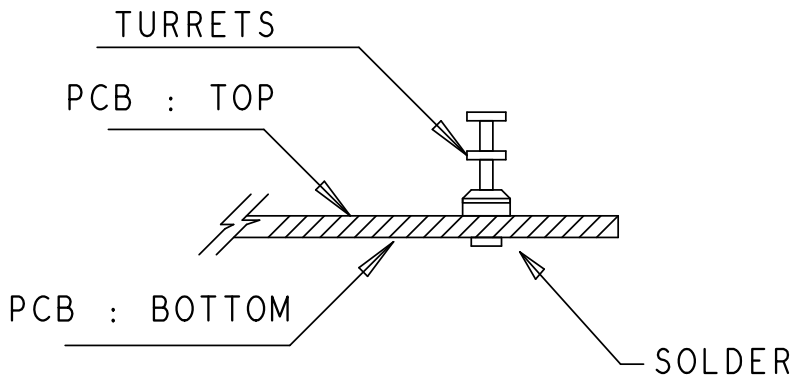
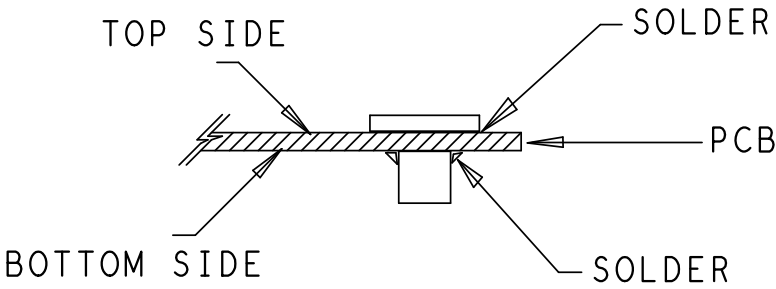
REVISIONS			
REV	DESCRIPTION	DATE	APPROVED
A	INITIAL RELEASE	27 JUL 22	X
B	ECR-110852	10 JAN 23	X

- ASSEMBLY NOTES:
- BOARD ACCEPTABILITY PER ANALOG DEVICES, INC. SPECIFICATION TST00119 (LATEST REVISION).
 - REPAIRS PER IPC-7711/21(LATEST REVISION) ARE ALLOWED.
 - REPAIRS ARE NOT ALLOWED IN SOLDERMASK FREE AREAS ON EITHER SIDE OF THE BOARD.

INSTALL STANDOFFS AS SHOWN BELOW:



BANANA JACK : KEYSTONE 575-4



PRIMARY SIDE			
UNLESS OTHERWISE SPECIFIED DIMENSIONS ARE IN INCHES	APPROVAL		DATE
	TEMPLATE ENGINEER		d d M M y y
	HARDWARE SERVICES		d d M M y y
	HARDWARE SYSTEMS		d d M M y y
MATERIAL	TEST ENGINEER		d d M M y y
	COMPONENT ENGINEER		d d M M y y
	TEST PROCESS		d d M M y y
	HARDWARE RELEASE		d d M M y y
FINISH	DESIGNER		d d M M y y
	PTD ENGINEER		d d M M y y
	CHECKER		d d M M y y
	DO NOT SCALE DWG		
SCALE		1 / 1	
SHEET		1 OF 2	

ANALOG
DEVICES

WWM
DIVISION
804 WOBURN STREET
WILMINGTON, MA 01887

TITLE

ASSEMBLY
EVAL-LTC7066-AZ

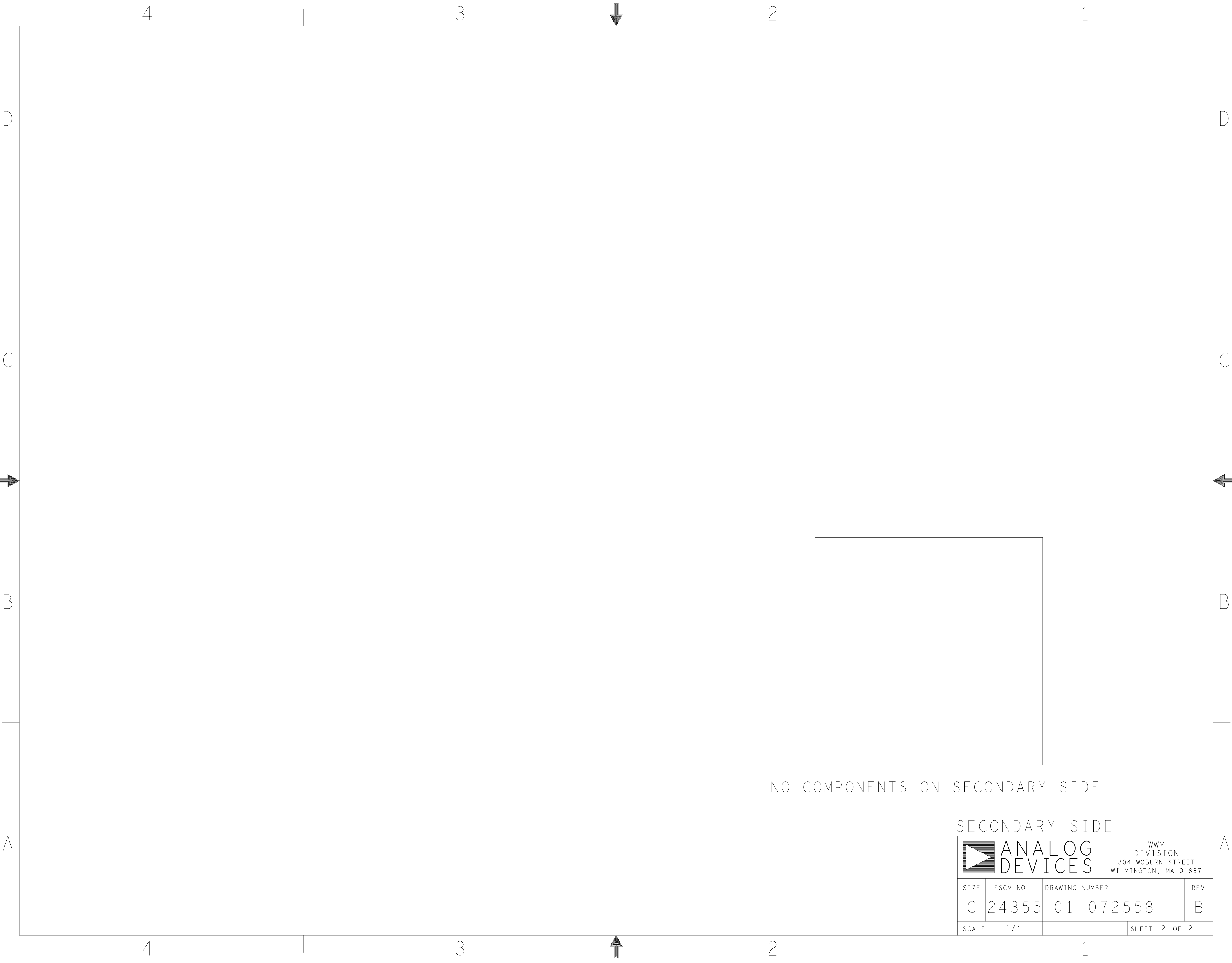
SIZE

FSCM NO

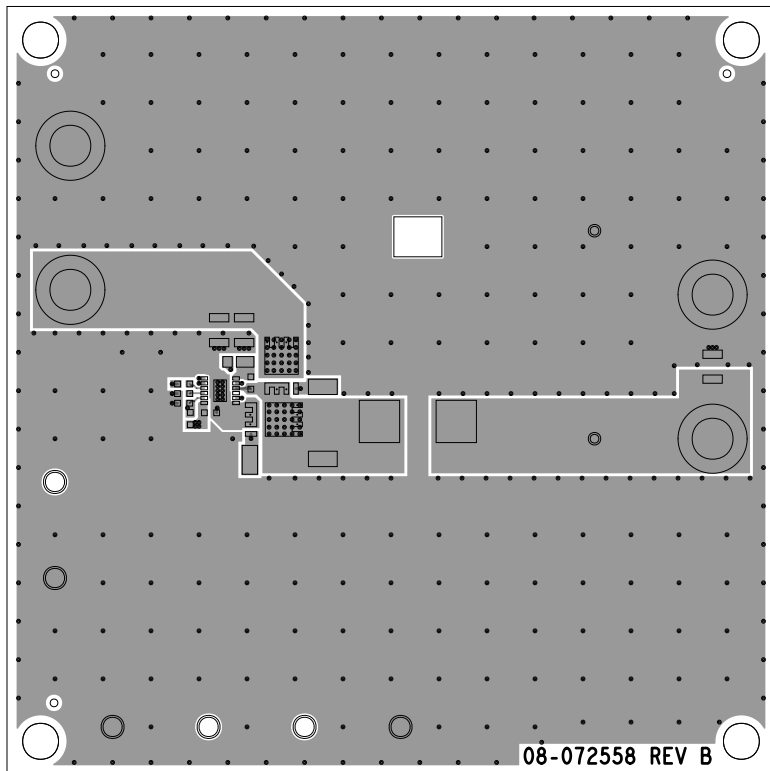
DRAWING NUMBER

REV

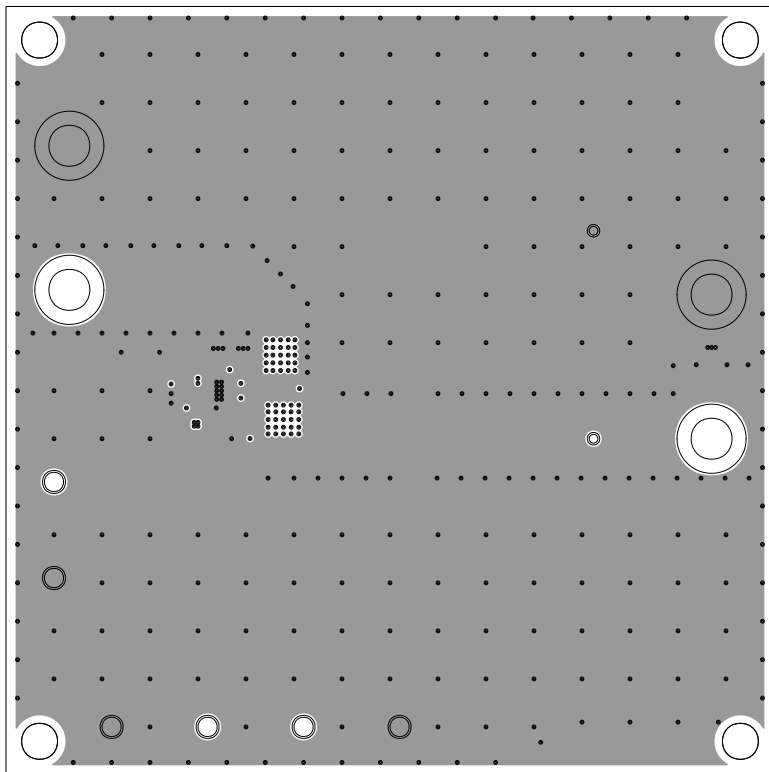
C2435501-072558B



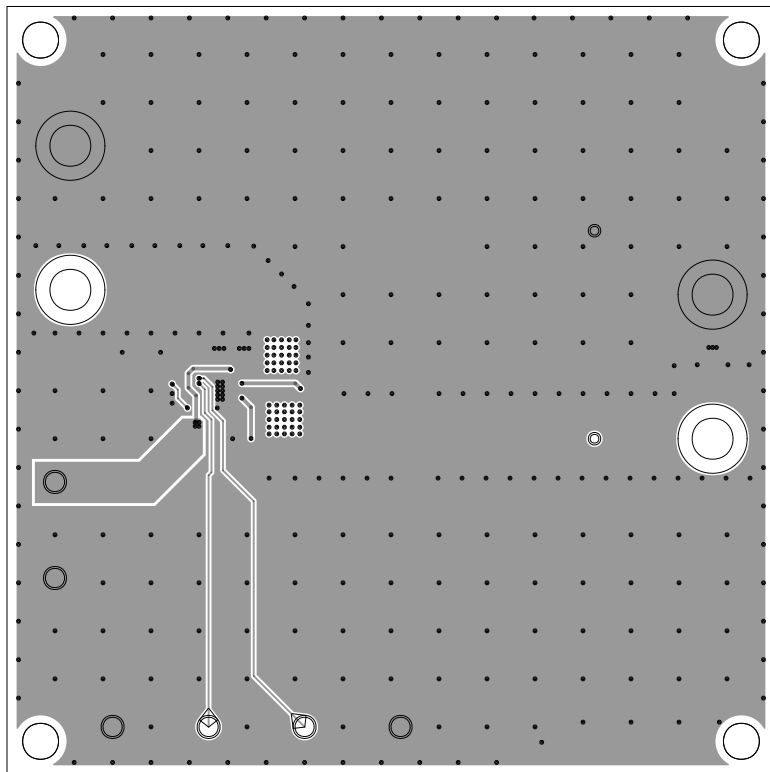
L1 PRIMARY
08-072558-01
REV B



L2 GND/SIGNAL
08-072558-07
REV B



L3 GND/SIGNAL
08-072558-08
REV B



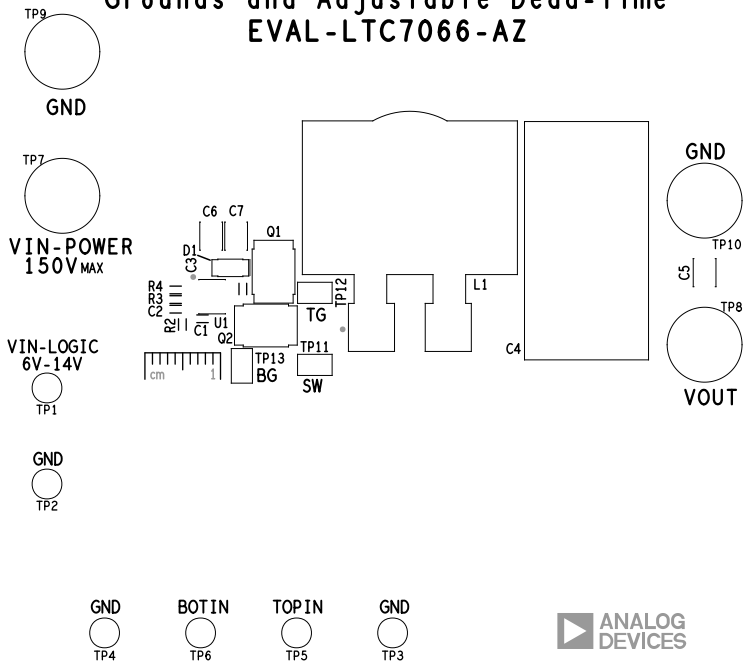
08-015258 REV B

SECONDARY SIDE

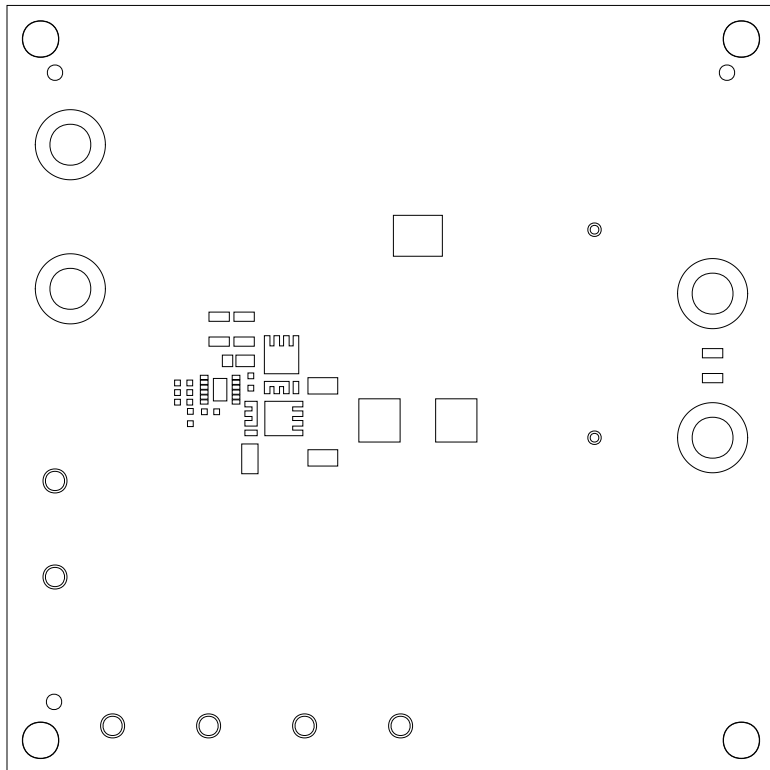
08-075258 REV B SECONDARY SIDE

SILKSCREEN PRIMARY
08-072558-03
REV B

LTC7066
150V Half-Bridge Driver with Floating
Grounds and Adjustable Dead-time
EVAL-LTC7066-AZ



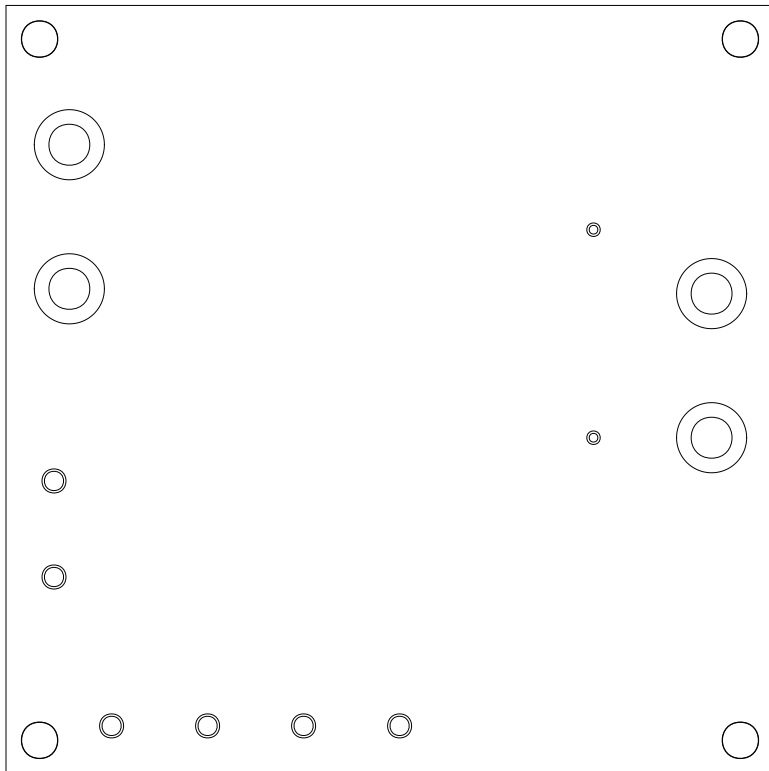
SOLDERMASK PRIMARY
08-072558-04
REV B



SILKSCREEN SECONDARY
08-072558-05
REV B



SOLDERMASK SECONDARY
08-072558-06
REV B



PASTEMASK PRIMARY
08-072558-13
REV B

