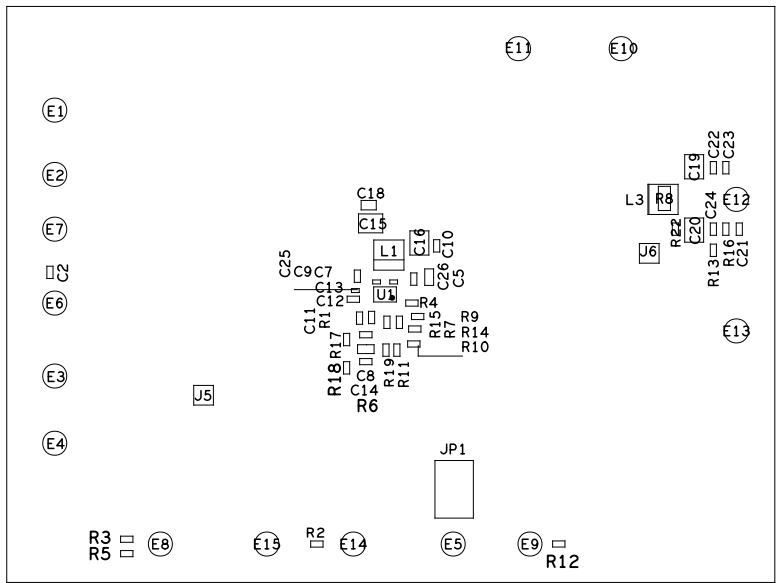


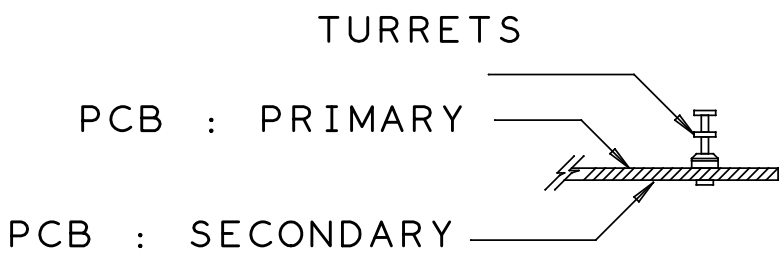
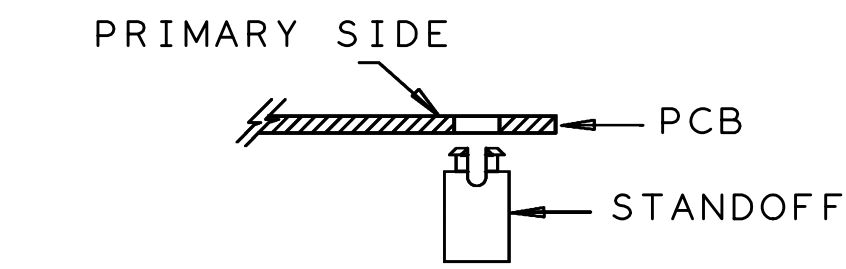
REVISIONS			
REV	DESCRIPTION	DATE	APPROVED
2A	INITIAL RELEASE	03JUL24	X
B	PER ECR-128443	05NOV25	CCORREA

ASSEMBLY NOTES:

1. BOARD ACCEPTABILITY PER ANALOG DEVICES, INC. SPECIFICATION TST00119 (LATEST REVISION).
2. REPAIRS PER IPC-7711/21(LATEST REVISION) ARE ALLOWED.
3. REPAIRS ARE NOT ALLOWED IN SOLDERMASK FREE AREAS ON EITHER SIDE OF THE BOARD.
4. INSTALL STANDOFFS AS SHOWN BELOW:

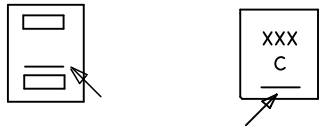


FOR JP1: INSTALL SHUNT ACROSS PIN5 AND PIN6.



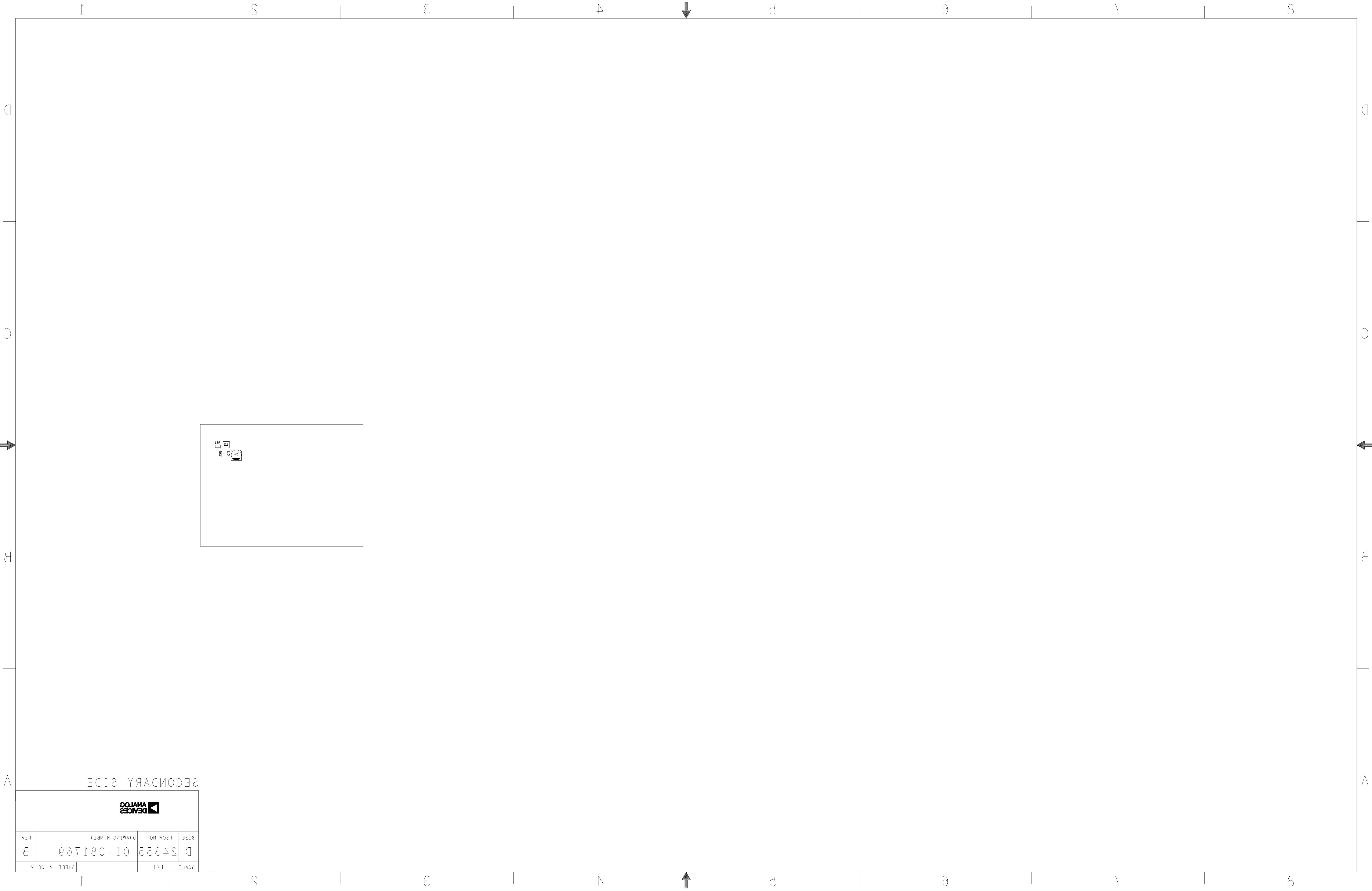
5. INSTALL INDUCTORS L1 AS SHOWN BELOW.

FOOTPRINT PART



PIN1 INDICATOR

PRIMARY SIDE			
UNLESS OTHERWISE SPECIFIED DIMENSIONS ARE IN INCHES TOLERANCES DECIMALS FRACTIONS ANGLES .XX -.010 --1/32 -- 2 .XXX -.005 .XXXX -.0050	APPROVAL	DATE	<div><div></div><div>ANALOG DEVICES</div></div> <div>TITLE ASSEMBLY EVAL-LT83402-AZ</div>
	TEMPLATE ENGINEER X	ddMMMyy	
	HARDWARE SERVICES X	ddMMMyy	
	HARDWARE SYSTEMS X	ddMMMyy	
MATERIAL	TEST ENGINEER X	ddMMMyy	SIZE FSCM NO DRAWING NUMBER REV C 24355 01 -081769 B
	COMPONENT ENGINEER X	ddMMMyy	
	TEST PROCESS X	ddMMMyy	
	HARDWARE RELEASE X	ddMMMyy	
FINISH	DESIGNER CCORREA	05NOV25	SCALE 1/1 SHEET 1 OF 2
	PTD ENGINEER ELAMP	05NOV25	
	CHECKER X	ddMMMyy	
	DO NOT SCALE DWG		



ANALOG DEVICES			
SCALE	1:1	2ND SHEET	OF 5
SIZE	D	DRAWING NUMBER	01-081769
REV	B		

SECONDARY SIDE