

REVISIONS			
REV	DESCRIPTION	DATE	APPROVED
3D	INIATIAL RELEASE	19DEC24	X

HOLE TOLERANCE

UNLESS SPECIFIED

PLATED: +/- 3 MILS

NON PLATED: +/- 2 MIL

DRILL CHART: TOP to BOTTOM				
ALL UNITS ARE IN MILS				
FIGURE	SIZE	PLATED	QTY	TOLERANCE/NOTES
+	6.0	PLATED	18	
@	10.0	PLATED	394	
o	45.0	PLATED	6	
Δ	100.0	PLATED	15	
⌈	185.0	NON-PLATED	4	

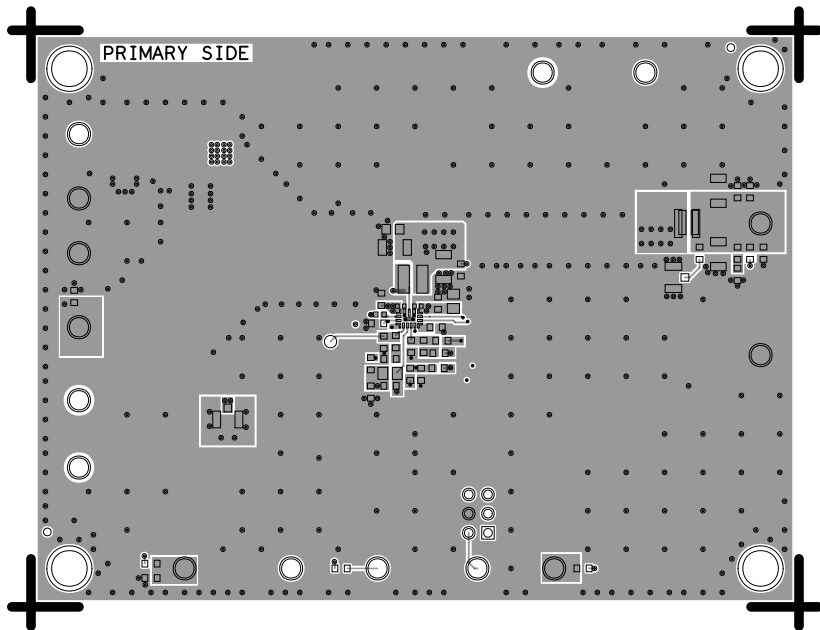
TOTAL HOLES: 437

PRIMARY SIDE

UNLESS OTHERWISE SPECIFIED DIMENSIONS ARE IN INCHES TOLERANCES DECIMALS FRACTIONS ANGLES .XX -.010 --1/32 -- 2 .XXX -.005 .XXXX -.0050	APPROVAL		DATE		<div><div></div><div>ANALOG DEVICES</div></div> <div>TITLE</div> <div>EVAL - LT83401 - AZ</div>								
	TEMPLATE ENGINEER X		ddMMMyy										
	HARDWARE SERVICES X		ddMMMyy										
	HARDWARE SYSTEMS X		ddMMMyy										
MATERIAL	TEST ENGINEER X		ddMMMyy										
	COMPONENT ENGINEER X		ddMMMyy										
	TEST PROCESS X		ddMMMyy										
	HARDWARE RELEASE X		ddMMMyy										
FINISH	DESIGNER X		ddMMMyy		SIZE	FSCM NO	DRAWING NUMBER	REV					
	PTD ENGINEER X		ddMMMyy										
	CHECKER X		ddMMMyy										
DO NOT SCALE DWG				SCALE		1 / 1		SHEET		OF		2	



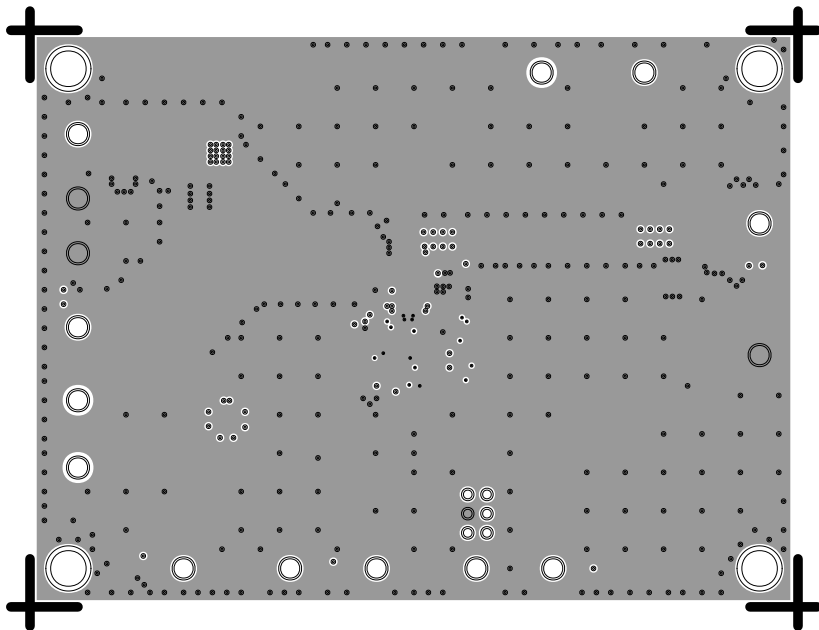
L1 PRIMARY
08-100225-01
REV A



L2-LANDER PLANE

08-100225-07

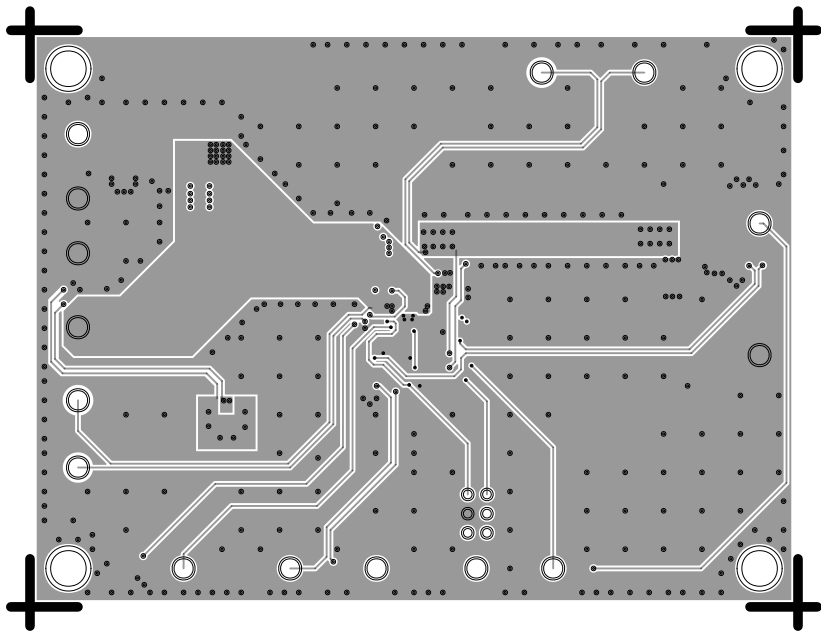
REV A



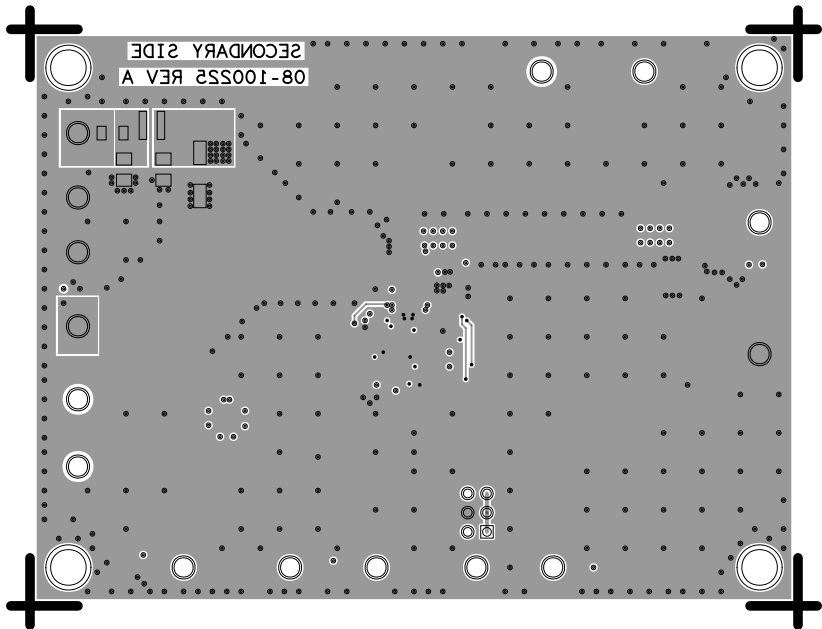
L2-ISA16AL3GND

08-100225-08

REV A



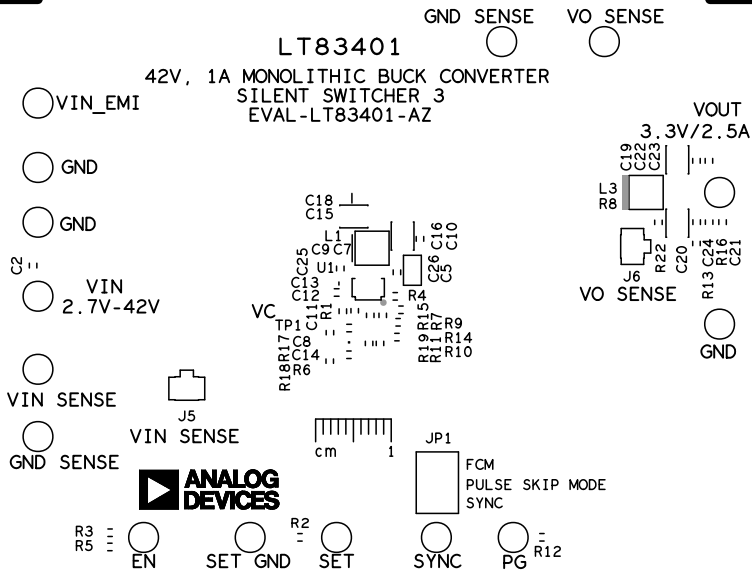
L4 SECONDARY
08-100225-02
REV A



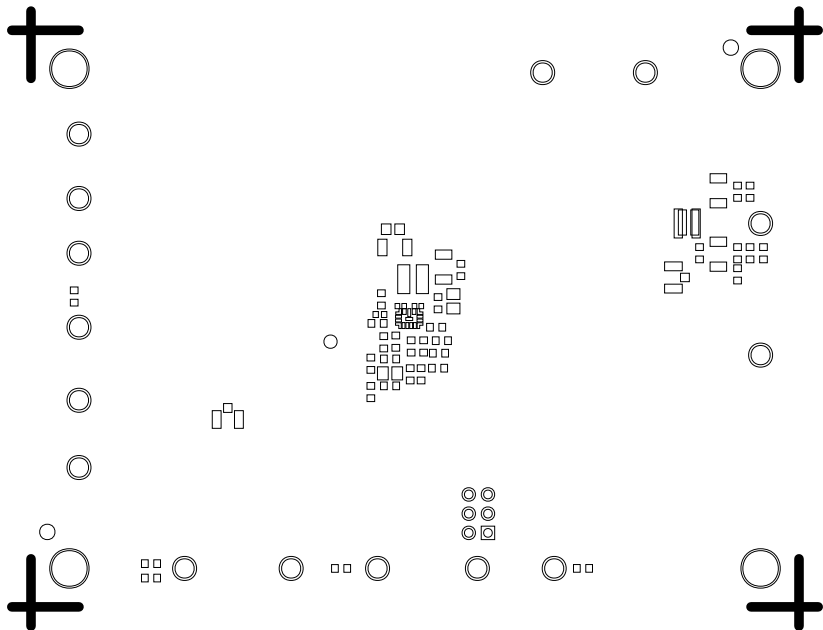
SILKSCREEN PRIMARY

08 - 100225-03

REV A



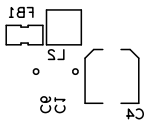
SOLDERMASK PRIMARY
08-100225-04
REV A



SILKSCREEN SECONDARY

08-100225-05

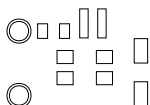
REV A



SOLDERMASK SECONDARY

08-100225-06

REV A



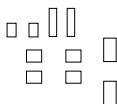
PASTEMASK PRIMARY
08-100225 -9
REV A



PASTEMASK SECONDARY

08-100225-10

REV A



L1 PRIMARY
08-100225-01
REV A

