

REVISIONS			
REV	DESCRIPTION	DATE	APPROVED
3D	INIATIAL RELEASE	19DEC24	X

HOLE TOLERANCE

UNLESS SPECIFIED

PLATED: +/- 3 MILS

NON PLATED: +/- 2 MIL

DRILL CHART: TOP to BOTTOM				
ALL UNITS ARE IN MILS				
FIGURE	SIZE	PLATED	QTY	TOLERANCE/NOTES
+	6.0	PLATED	18	
@	10.0	PLATED	394	
o	45.0	PLATED	6	
Δ	100.0	PLATED	15	
⌈	185.0	NON-PLATED	4	

TOTAL HOLES: 437

PRIMARY SIDE

UNLESS OTHERWISE SPECIFIED DIMENSIONS ARE IN INCHES TOLERANCES DECIMALS    FRACTIONS    ANGLES .XX    -.010    --1/32    -- 2 .XXX    -.005 .XXX    -.0050	APPROVAL		DATE		<div><div></div><div>ANALOG DEVICES</div></div> <div>TITLE</div> <div>FABRICATION</div> <div>EVAL - LT83402 - AZ</div>				
	TEMPLATE ENGINEER X		ddMMMyy						
	HARDWARE SERVICES X		ddMMMyy						
	HARDWARE SYSTEMS X		ddMMMyy						
MATERIAL	TEST ENGINEER X		ddMMMyy						
	COMPONENT ENGINEER X		ddMMMyy						
	TEST PROCESS X		ddMMMyy						
	HARDWARE RELEASE X		ddMMMyy						
FINISH	DESIGNER X		ddMMMyy		SIZE	FSCM NO	DRAWING NUMBER	REV	
	PTD ENGINEER X		ddMMMyy						
	CHECKER X		ddMMMyy						
DO NOT SCALE DWG				SCALE		1 / 1		SHEET    1 OF    2	

4

3

2

1

REV

DESCRIPTION

DATE

APPROVED

3D

INIATIAL RELEASE

19DEC24

X

NOTES :UNLESS OTHERWISE SPECIFIED

1. DIMENSIONS ARE IN INCHES (EXCEPT WHERE NOTED).  
ALL DOCUMENTS & SPECIFICATIONS REFERRED TO BELOW SHOULD BE THE LATEST REVISIONS.

MATERIAL HOMOGENOUS MATERIALS IN THIS BOARD SHALL BE COMPLAINT WITH THE EU DIRECTIVE 2002/95/EC

2. BOARD MATERIAL: (USE CHECKED ITEMS)

(X) ISOLA 370HR OR S1000-2 OR IT180 OR EQUIVALENT

( ) ISOLA-FR408HR OR EQUIVALENT

( ) ISOLA I5410

( ) MEGTRON 6

( ) NELCO-4000-13

( ) ROGERS 4350B

( ) ROGERS 3003

( ) ARLON 85N

( ) EM370D

( ) OTHER \_\_\_\_\_

3. ALL LAMINATES & BONDING MATERIALS SHOULD BE SELECTED FROM IPC-4101 OR IPC-4103.(TG>170 DEGC TD>300 DEGC)  
UL FLAMMABILITY RATING 94V-0. BOARD MATERIAL & CONSTRUCTION SHALL MEET THE REQUIREMENTS OF UL796/UL796F.

4. REFER TO IPC-6010 SERIES, CLASS 2 FOR FABRICATION. WORKMANSHIP SHALL CONFORM TO IPC-A-600, CLASS 2.

5. REFER TO LAMINATION DIAGRAM FOR OVERALL BOARD THICKNESS, TOLERANCE APPLIES AFTER ALL LAMINATION AND PLATING PROCESSES. FINISHED THICKNESS MEASURED FROM TOP COPPER TO BOTTOM COPPER.

6. BOW & TWIST NOT TO EXCEED 0.0075 INCHES (0.75%) PER LINEAR INCH AND SHOULD BE MEASURED PER IPC-TM-650, METHOD 2.4.22.

7. ACCEPTABILITY PER ADI SPECIFICATION TST00115.

TOOLING :

8. IMPEDANCE REQUIREMENTS: IF NO STACKUP IS DEFINED, THE VENDOR IS ALLOWED TO ADJUST THE DIELECTRIC THICKNESS & TRACE WIDTHS TO MEET THE IMPEDANCE REQUIREMENT. IF SPECIFIED, THE VENDOR MUST MEET THE REQUIREMENTS LISTED IN THE IMPEDANCE TABLE. ANY ADJUSTMENT MADE TO THE DEFINED STACKUP, TRACE WIDTH & SPACING THAT IMPACT THE REQUIREMENTS MUST HAVE WRITTEN APPROVAL FROM ADI.

9. FILLET OPTIONS TO ENHANCE RELIABILITY AT PAD JUNCTIONS WHERE SPACING PERMITS.

( ) FILLETS ALLOWED

(X) FILLETS NOT ALLOWED

10. THIEVING:

( ) VENDOR MAY ADD THIEVING TO COMPENSATE FOR LOW COPPER DENSITY AREAS MAINTAINING A MINIMUM 0.100 INCH CLEARANCE FROM ALL COPPER FEATURES.

(X) VENDOR MAY NOT ADD THIEVING TO COMPENSATE FOR LOW COPPER DENSITY AREAS.

11. LAYER TO LAYER REGISTRATION SHALL BE WITHIN 0.003 INCHES.

FINISH :

12. DRILL SIZES ARE FINISHED HOLE SIZES. ALL HOLES SHALL BE LOCATED WITHIN 0.005 INCHES DTP,UNLESS SPECIFIED. MINIMUM BARREL PLATING OF 0.001 INCHES. PLATED HOLES SHALL NOT BE ROUGH OR IRREGULAR SO AS TO HINDER PROPER SOLDER WICKING. BARREL RELIEF ON SOLDERMASK ALLOWED IN UNFILLED VIA IN PAD HOLES.

13. PLATING SPECIFICATION:

(X) REFER TO LAMINATION DIAGRAM FOR FINISHED COPPER WEIGHT/THICKNESS REQUIRMENTS

THE STARTING COPPER WEIGHT/THICKNESS CAN VARY AS LONG AS THE FINISHED COPPER WEIGHT/THICKNESS IS NOT LESS THAN THE SPECIFIED VALUE.

14. SURFACE FINISH:

(X) IMMERSION GOLD (ENIG) 1.58-3.94 MICRO INCHES OVER 118-236 MICRO INCHES MIN. OF ELECTROLESS NICKEL PER IPC-4552

( ) OSP (ORGANIC SOLDERABILITY PRESERVATIVE)

( ) IMMERSION SILVER

( ) SOFT WIRE BONDABLE GOLD 30-50 MICRO INCHES OF SOFT WIRE

BONDABLE GOLD OVER 100-150 MICRO INCHES OF NICKEL

( ) EDGE CONNECTOR FINGERS ARE TO BE PLATED WITH 100 MICRO-INCHES(.0001") OF LOW STRESS NICKEL UNDER 30 MICRO-INCHES (.0003") OF GOLD

( ) OTHER\_\_\_\_\_

15. SOLDERMASK:

SOLDERMASK OVER BARE COPPER OR BARE GOLD (BOTH SIDES) TO MEET IPC-SM-840.

IF PRESENT,DO NOT MODIFY SOLDERMASK DEFINED PADS (MASK OPENINGS LESS THAN COPPER PAD) WITHOUT APPROVAL.

(X) LPI

( ) OTHER\_\_\_\_\_

COLOR

(X) GREEN

( ) OTHER\_\_\_\_\_

16. APPLY SILKSCREEN TO BOTH SIDES USING A NON-CONDUCTIVE, EPOXY BASED INK PER ARTWORK.

(X) WHITE

( ) OTHER

TESTING:

17. FINAL ELECTRICAL TEST TO BE PERFORMED USING PROVIDED IPC-D-356A NETLIST OR ODB++ FORMAT FILE.  
THE PCB SHALL HAVE A VERIFICATION STAMP.

18. A TIME DOMAIN REFLECTOMETER REPORT (TDR) FOR EACH IMPEDANCE CONTROLLED LAYER & A CERTIFICATE OF COMPLIANCE SHALL BE PROVIDED BY VENDOR AT TIME OF SHIPMENT. INSTANCES WHERE TDR TESTING CAN'T BE PERFORMED BECAUSE THE TRACE LENGTH IS TOO SHORT ON THE OUTER LAYERS AT THE PIN ESCAPES IS ACCEPTABLE, ALL OTHER INSTANCES MUST BE REPORTED.

MISCELLANEOUS :

19. IF PRESENT, ALL BLIND/BURIED VIAS WITH AN ASPECT RATIO <1:1 TO BE PLATED SHUT WITH COPPER WHEN USED AS VIA-IN-PAD OR AS A STACKED VIA. BLIND/BURIED VIAS WITH AN ASPECT RATIO >1:1 TO BE FILLED WITH NON-CONDUCTIVE EPOXY.

20. FOR VIA FILL INFORMATION REFER TO DRILL CHART:

(X) NON-CONDUCTIVE EPOXY FILL ALL LESS THAN 0.012 INCHES DRILLED VIAS

( ) COPPER FILL ALL 0.XXXX INCHES DRILLED VIAS

21. INTENTIONAL SHORTS:

IF AN INTENTIONAL SHORT REPORT IS SUPPLIED AND DOES NOT MATCH THE FAB DATA THEN ADI APPROVAL IS REQUIRED.

22. PENMUTS:

( ) PENMUTS TO BE INSTALLED BY FABRICATOR

( ) PENMUTS NOT TO BE INSTALLED BY FABRICATOR

(X) NOT APPLICABLE

23. MANUFACTURER TO ETCH/STAMP WITH PERMANENT NON-CONDUCTIVE INK ON SECONDARY SIDE UNLESS OTHERWISE SPECIFIED:

A. UL CODE-FLAMMABILITY RATING FOR THOSE APPROVED MATERIALS(IF APPLICABLE)

B. DATE CODE

C. LOT NUMBER

D. MANUFACTURER LOGO

25. PANELIZATION:

BOARDS TO BE SHIPPED IN ARRAY AND KEPT INTACT

PANEL TO BE SUBJECTED TO CUSTOMERS APPROVAL

PANEL SOLDER PASTE STENCIL GERBER TO BE PROVIDED TO ANALOG

27. MINIMUM DESIGN LINE WIDTH IS .010 INCH.

28. MINIMUM DESIGN LINE SPACING IS .006 INCH.

FAB NOTES REVISION: 2ND NOVEMBER 2022

LAMINATION DIAGRAM

LAYER NUMBER	LAYER NAME	COPPER THICKNESS (OZ.,INCH)	DIELECTRIC THICKNESS ( INCH )	MATERIALS
1	TOP	2 OZ, 0.0028"		FINAL CU (THICKNESS AFTER PLATING)
			0.006"	ISOLA 370HR/EQUIVALENT
2	LAYER_2	2 OZ, 0.0028"		CU CLAD
				ISOLA 370HR/EQUIVALENT
3	LAYER_3	2 OZ, 0.0028"		CU CLAD
			0.006"	ISOLA 370HR/EQUIVALENT
4	BOTTOM	2 OZ, 0.0028"		FINAL CU (THICKNESS AFTER PLATING)

THE FINISHED PCB THICKNESS TO BE: 0.062" +/-10%

PRIMARY SIDE

UNLESS OTHERWISE SPECIFIED  
DIMENSIONS ARE IN INCHES  
TOLERANCES  
DECIMALS FRACTIONS ANGLES  
.XX +- .010 +-1/32 +- 2  
.XXX +- .005  
.XXXX +- .0050

APPROVAL  
TEMPLATE ENGINEER  
X  
HARDWARE SERVICES  
X  
HARDWARE SYSTEMS  
X

DATE  
ddMMMyy  
ddMMMyy  
ddMMMyy

MATERIAL

TEST ENGINEER  
X  
COMPONENT ENGINEER  
X  
TEST PROCESS  
X  
HARDWARE RELEASE  
X

ddMMMyy  
ddMMMyy  
ddMMMyy  
ddMMMyy

FINISH

DESIGNER  
X  
PTD ENGINEER  
X  
CHECKER  
X

ddMMMyy  
ddMMMyy  
ddMMMyy

DO NOT SCALE DWG

SIZE

FSCM NO

DRAWING NUMBER

REV

C

24355

09 -081769

3D

SCALE

1 / 1

SHEET 2 OF 2

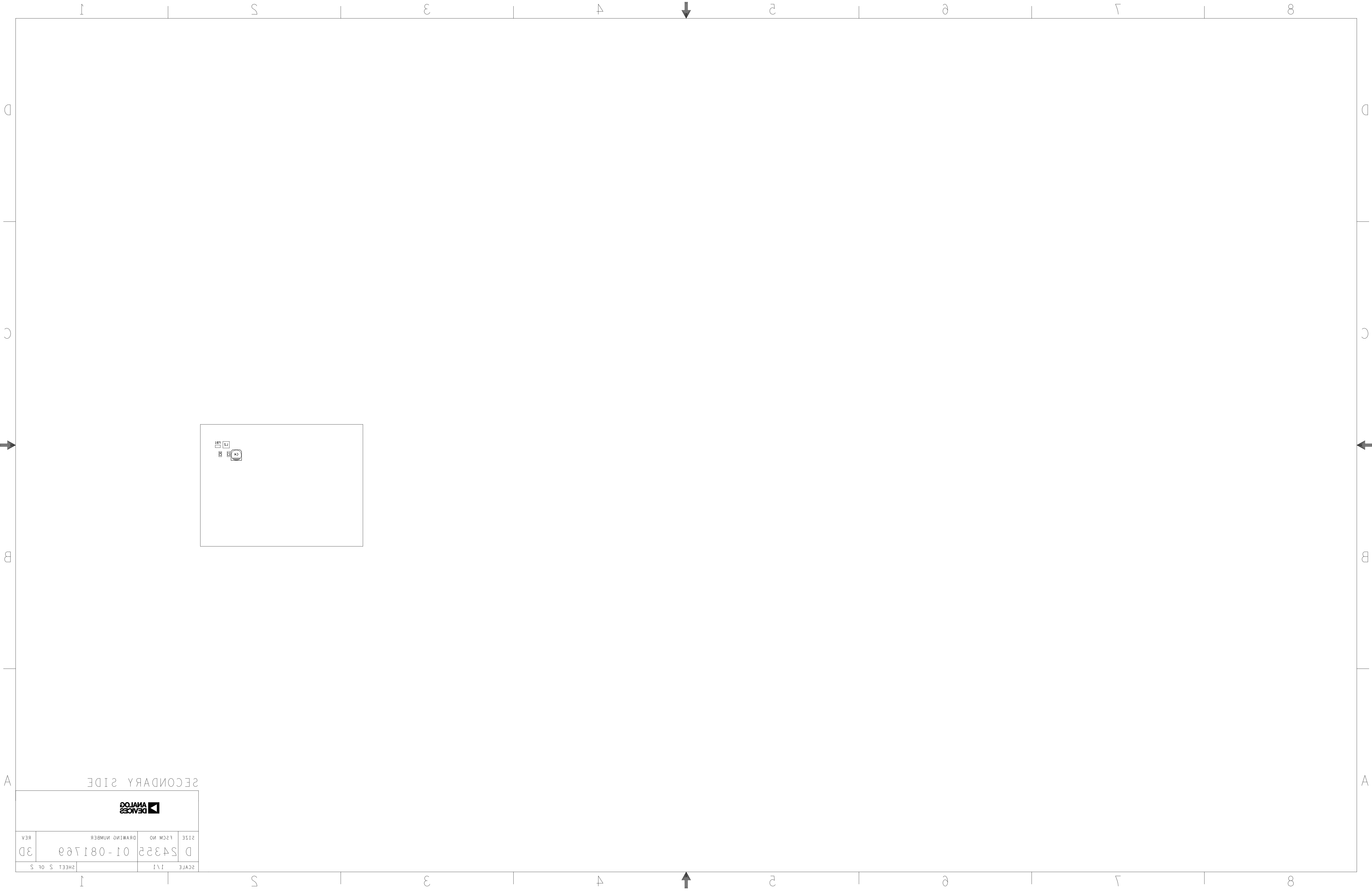
TITLE


FABRICATION

EVAL-LT83402-AZ

ANALOG  
DEVICES





DEVICES 			
SCALE	1:1	SHEET 5 OF 5	
SIZE	D 54322	DRAWING NUMBER	01-081700
REV	3D		

SECONDARY SIDE

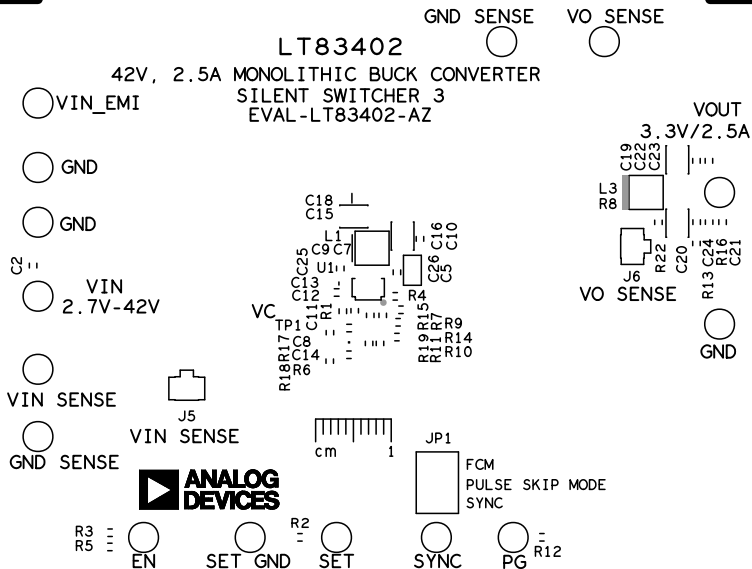
A

A

# SILKSCREEN PRIMARY

08-081769-03

REV 3D



# SILKSCREEN PRIMARY

08 - 081769-03

REV 3D



GND SENSE



VO SENSE



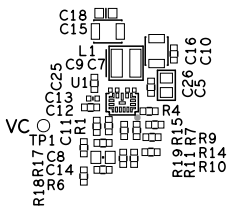
LT83402

42V, 2.5A MONOLITHIC BUCK CONVERTER  
SILENT SWITCHER 3  
EVAL-LT83402-AZ

VOUT  
3.3V/2.5A



VO SENSE



VIN SENSE



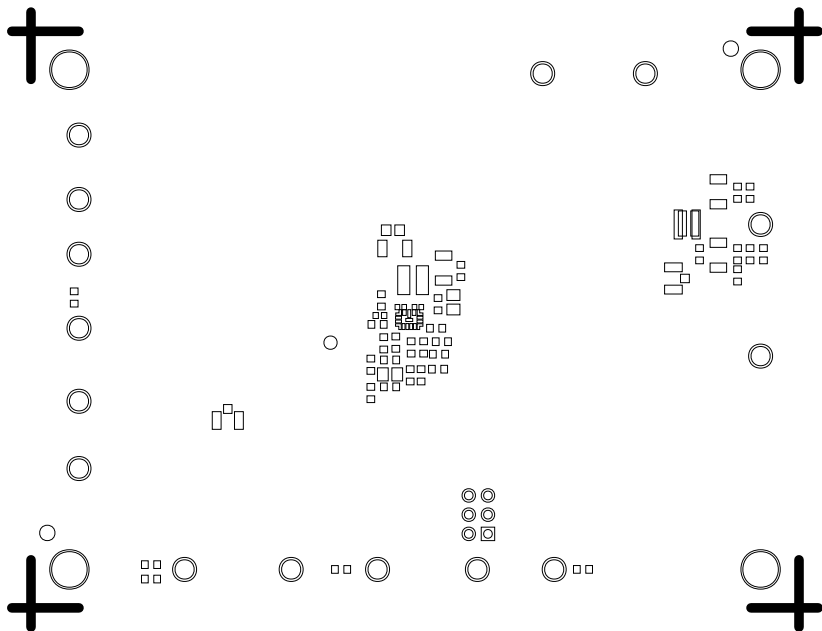
JP1



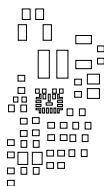
FCM  
PULSE SKIP MODE  
SYNC



SOLDERMASK PRIMARY  
08-081769-04  
REV 3D

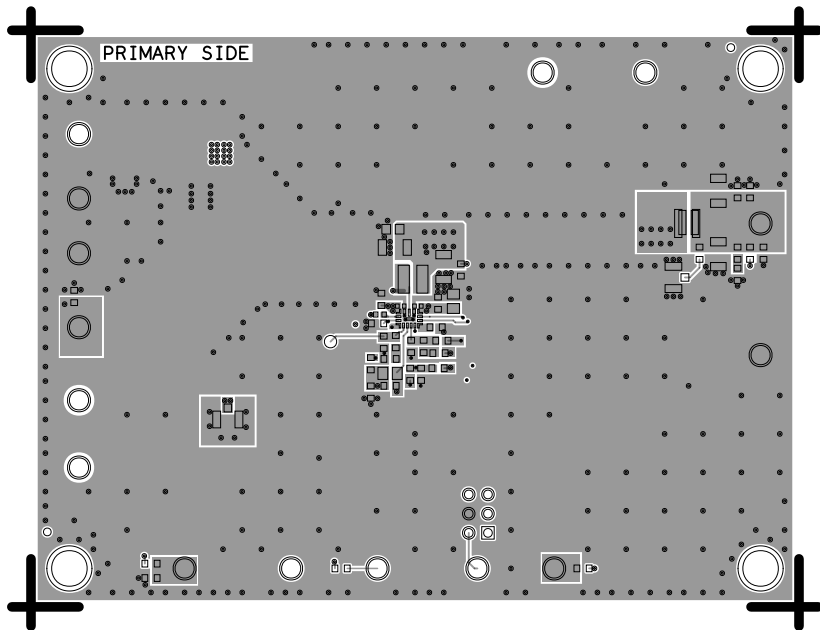


PASTEMASK PRIMARY  
08-081769-13  
REV 3D





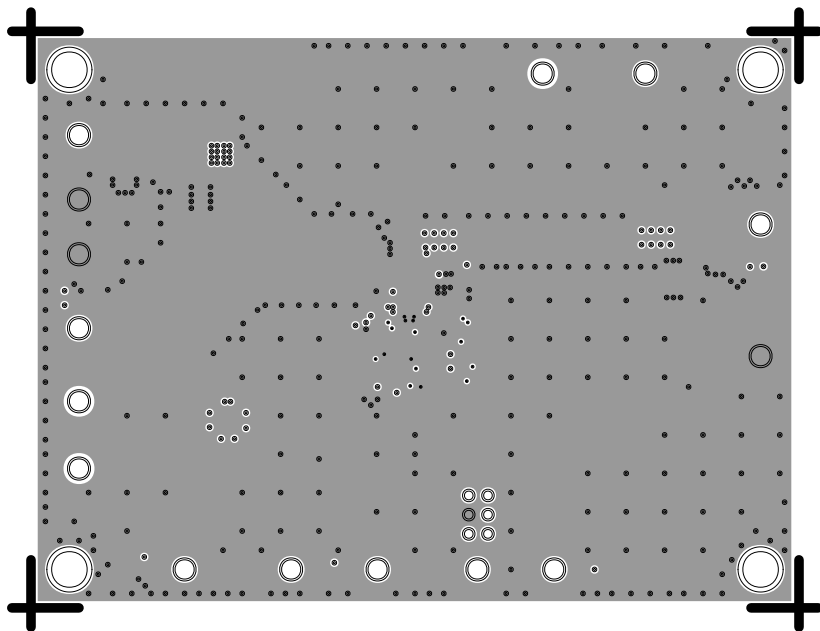
L1 PRIMARY  
08-081769-01  
REV 3D



L2 - SIGNAL / GND

08-081769-07

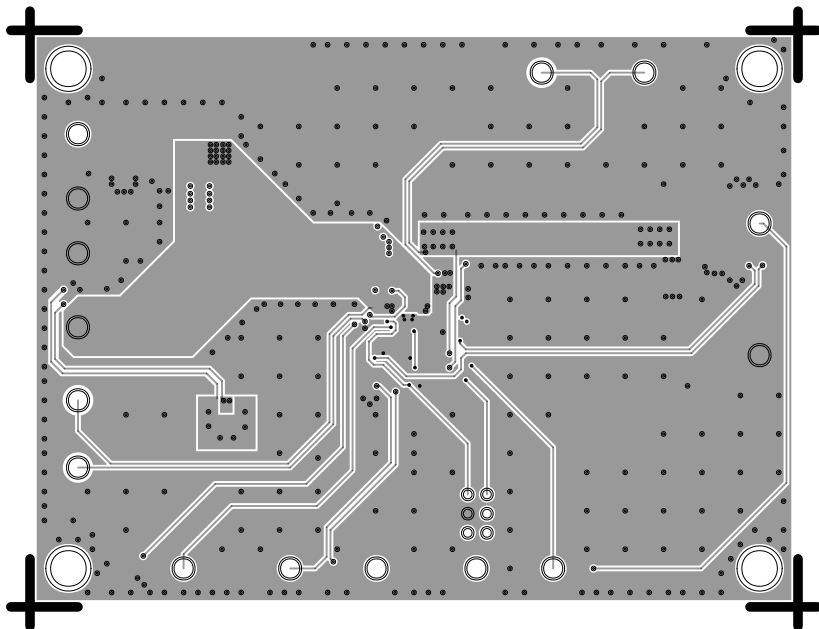
REV 3D



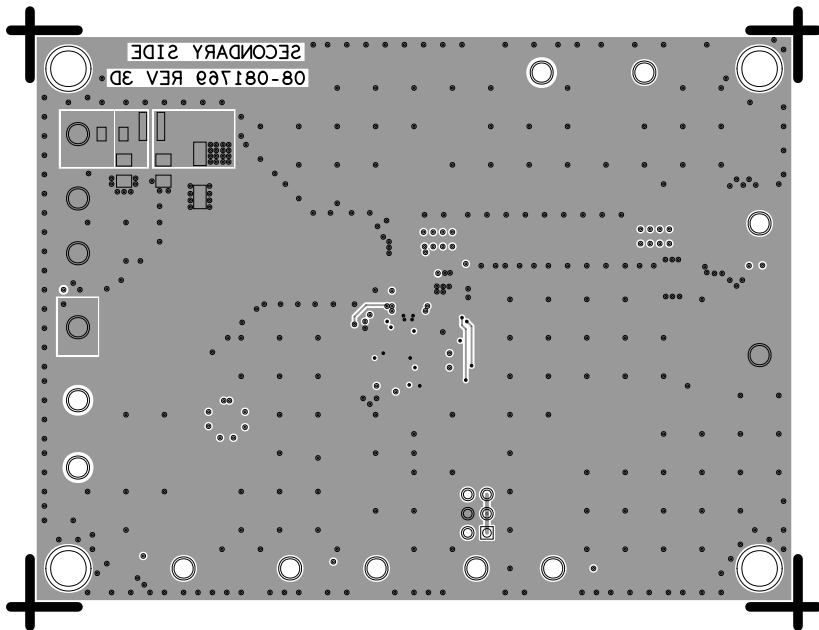
L3 - SIGNAL / GND

08-081769-08

REV 3D



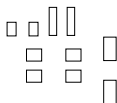
L4 SECONDARY  
08-081769-02  
REV 3D



PASTEMASK SECONDARY

08-081769-14

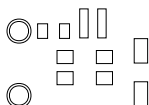
REV 3D



SOLDERMASK SECONDARY

08-081769-06

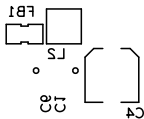
REV 3D



SILKSCREEN SECONDARY

08-081769-05

REV 3D



SILKSCREEN SECONDARY

08-081769-05

REV 3D

