

# EVAL-LT8333-AZ

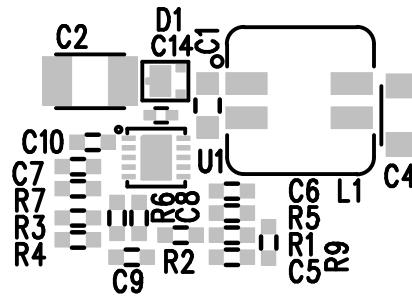
## LOW $I_Q$ 40V, 3A

### BOOST/SEPIC/INVERTING CONVERTER

\*SEE USER GUIDE  
FOR MAX  $I_{OUT}$  VS  $V_{IN}$

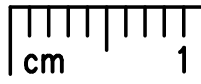
**VOUT**  
**12V 1A\***

E6  
FB2  
C17  
C16  
C3  
E7  
GND



VIN  
3V-26V  
E1  
FB1  
C13  
C11  
C12  
E2  
GND

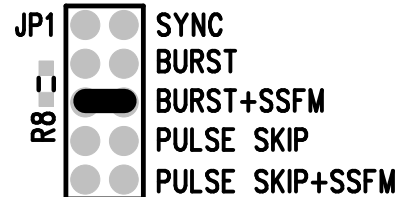
EN/UVLO  
E3



BIAS  
TP1

GND  
E5

SYNC  
E4



TOP SILKSCREEN

ANALOG DEVICES

DATE: 7-8-21

EVAL-LT8333-AZ, REV 2