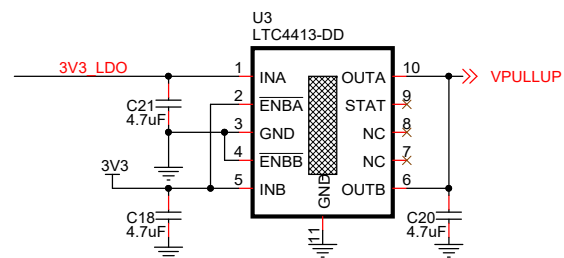
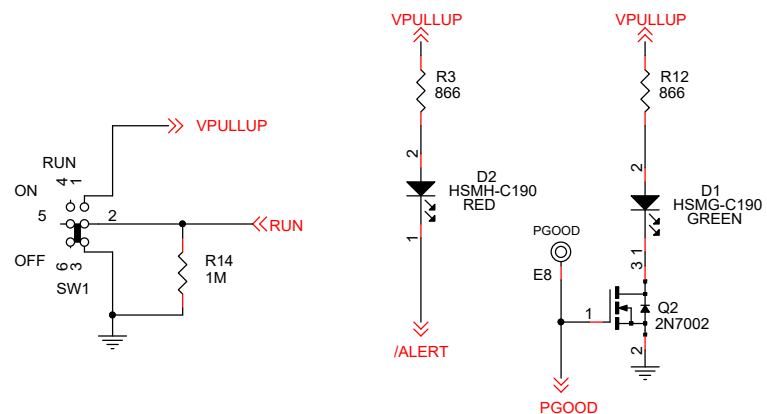
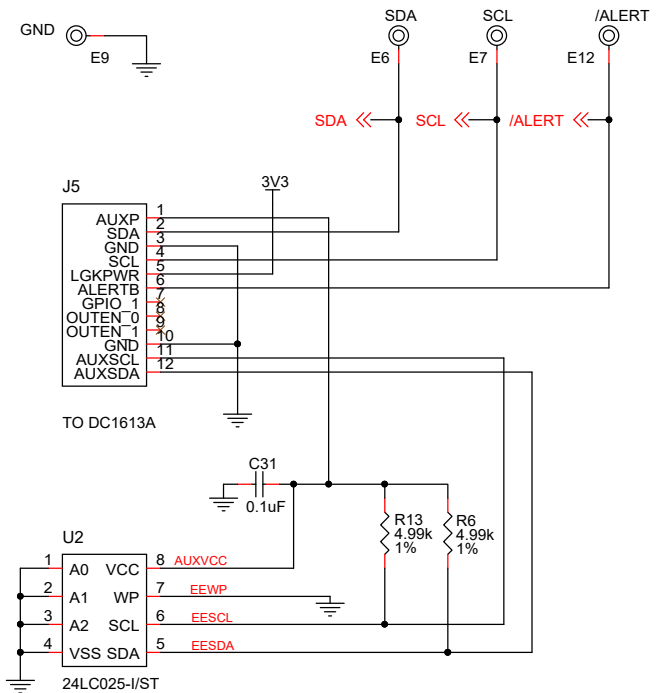


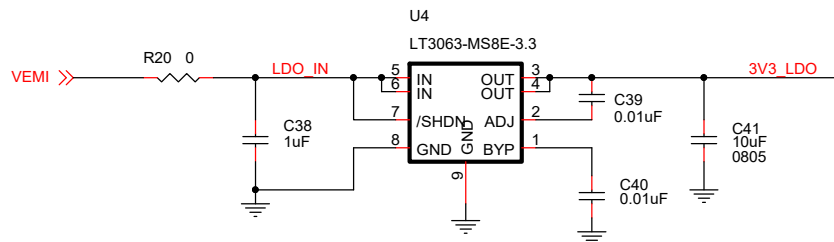
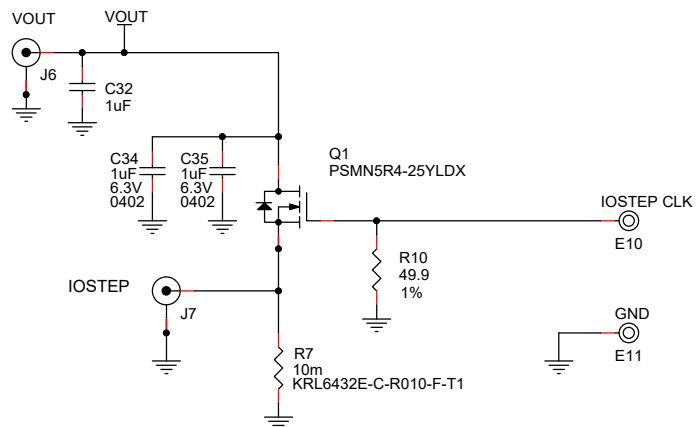




ALL PARTS ON THIS PAGE ARE FOR DEMO ONLY, NOT NEEDED IN CUSTOMER DESIGN



## LOAD TRANSIENT CIRCUIT



NOTE: UNLESS OTHERWISE SPECIFIED  
1. ALL RESISTORS AND CAPACITORS ARE 0603.

## CUSTOMER NOTICE

**ANALOG DEVICES HAS MADE A BEST EFFORT TO DESIGN A CIRCUIT THAT MEETS CUSTOMER-SUPPLIED SPECIFICATIONS; HOWEVER, IT REMAINS THE CUSTOMER'S RESPONSIBILITY TO VERIFY PROPER AND RELIABLE OPERATION IN THE ACTUAL APPLICATION. COMPONENT SUBSTITUTION AND PRINTED CIRCUIT BOARD LAYOUT MAY SIGNIFICANTLY AFFECT CIRCUIT PERFORMANCE OR RELIABILITY. CONTACT ANALOG DEVICES APPLICATIONS ENGINEERING FOR ASSISTANCE.**

## APPROVALS

PCB DES.	Rachel L.
----------	-----------

<b>APP ENG.</b>	<b>Haibo L.</b>
-----------------	-----------------

**THIS CIRCUIT IS PROPRIETARY TO ANALOG DEVICES AND SUPPLIED FOR USE WITH ANALOG DEVICES PARTS.**

**ANALOG  
DEVICES**  
AHEAD OF WHAT'S POSSIBLE™

**TITLE: SCHEMATIC**  
**20A 16V DUAL PHASE STEP-DOWN SILENT SWITCHER**  
**WITH DIGITAL POWER SYSTEM MANAGEMENT**

IC NO. LT7170RV-1	SCHMATIC NO. AND REVISION:
SKU NO. EVAL-LT7170-1-AZ	710-EVAL-LT7170-1-AZ_REV05

SIZE: N/A	DATE: Friday, October 06, 2023	SHEET 2 OF 2
-----------	--------------------------------	--------------