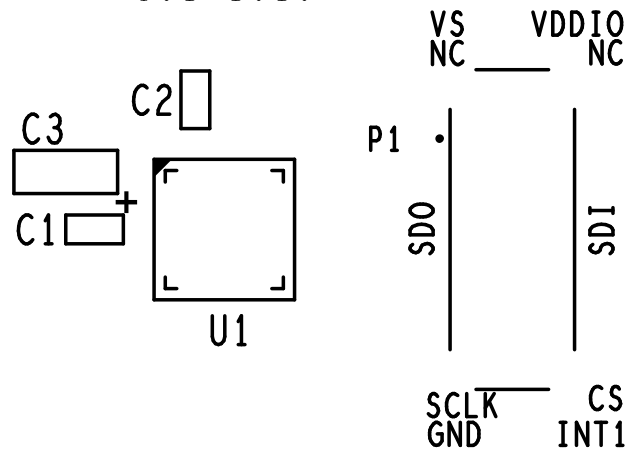
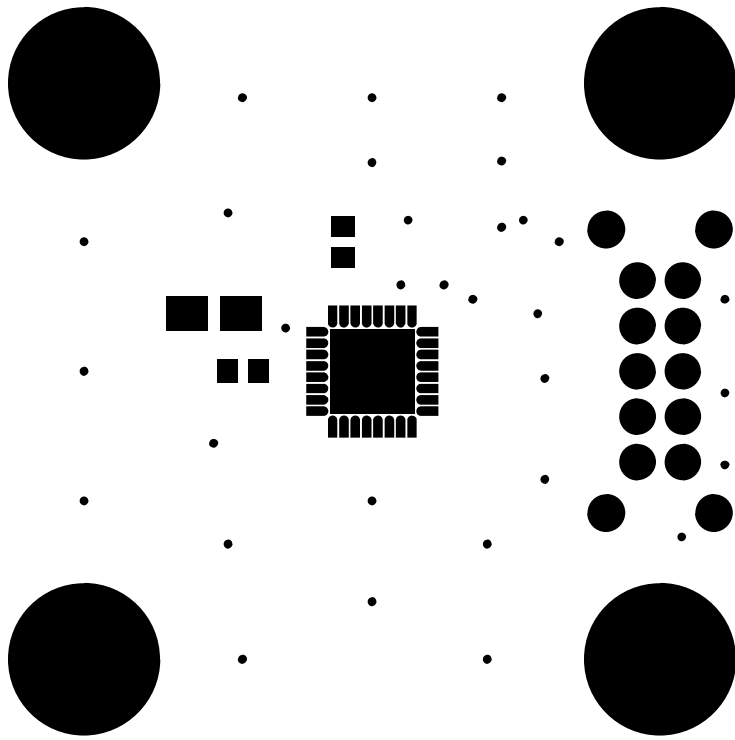


ADXL314Z EVAL BOARD
ANALOG DEVICES

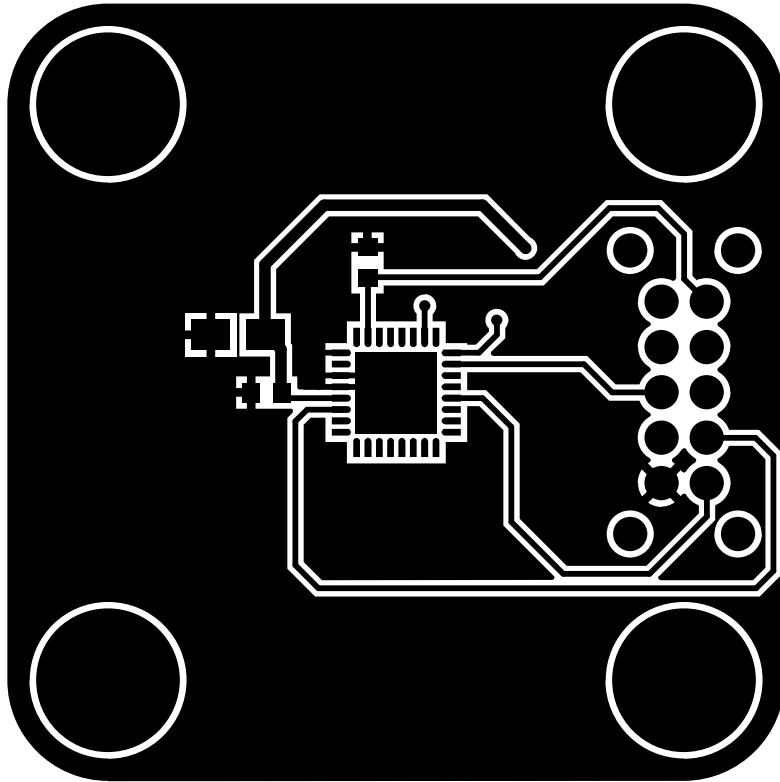
301-1019



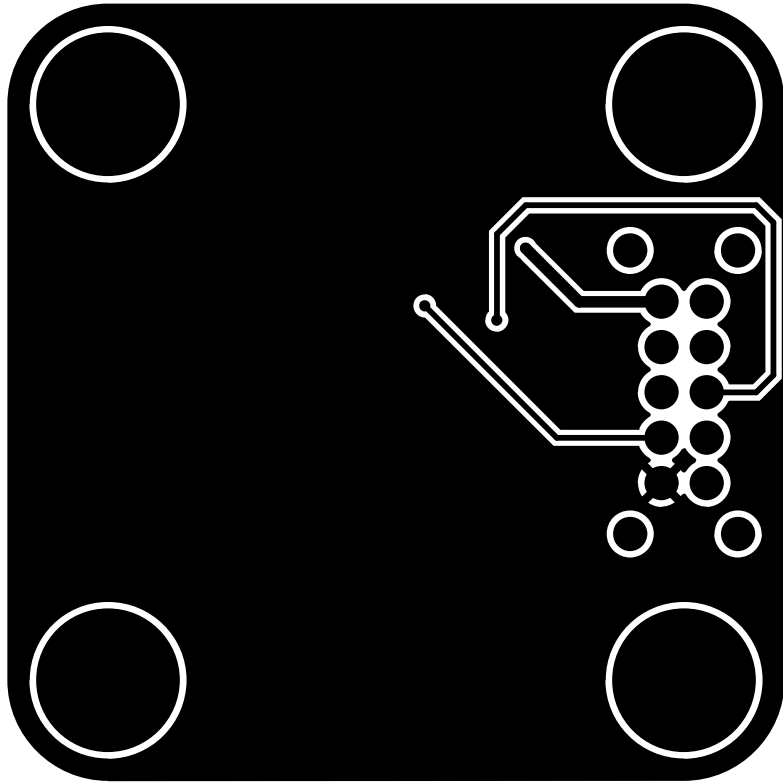
301-1019.pss



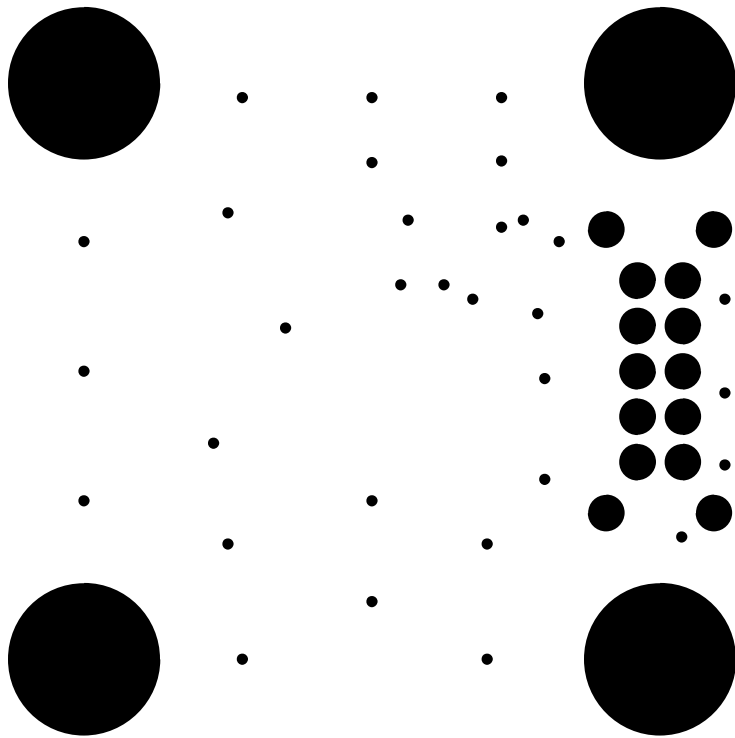
301 - 1019 . p s m



301 - 1019 . 101

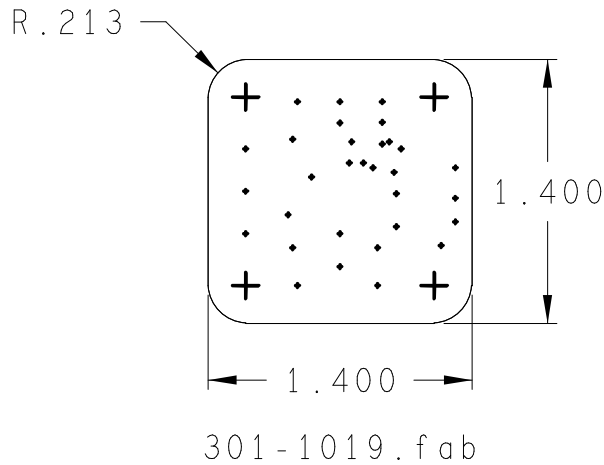


301 - 1019 . 102



301 - 1019 . s s m

PRIMARY SIDE VIEW



NOTES :

1. PCB SPEC: PCB SHALL BE MANUFACTURED TO MEET ALL SPECIFICATIONS AND REQUIREMENTS OF IPC-6011 AND IPC-6012, CLASS 2 EXCEPT AS NOTED.
2. MATERIAL: EPOXY GLASS, TYPE FR4, 0.125" THICK, 1 OZ CU PLATE BOTH SIDES. DK 4,3-4,5
3. SOLDER MASK: COLOR GREEN, PHOTOIMAGEABLE TYPE PER IPC SM-840, TYPE B, CLASS 2. APPLY OVER BARE COPPER TO BOTH SIDES OF PCB.
4. FINISH: PREFERRED IS IMMERSION AG, NIG, WHITE TIN. UNFUSED SN/PB IS ACCEPTABLE. HASL (OR HOT OIL) IS LEAST PREFERRED.
5. SILKSCREEN: APPLY WHITE EPOXY INK TO COMPONENT SIDE OF PCB. ADD VENDOR ID AND DATE CODE TO SILKSCREEN TOP.
6. DRILL SIZES: HOLES SIZES IN DRILL LEGEND REPRESENT FINISHED SIZE AFTER PLATING. MIN THICKNESS TO BE 0.0015".
7. PHOTOTOOLS: ON FINISHED PCB'S, COPPER ETCH IS TO BE WITHIN +/- 0.0005" OF PHOTOTOOL DATA.

DRL CHART: L01 to L02			
ALL UNITS ARE IN MILS			
SYMBOL	SIZE	FINISH	QTY
•	10.0	PLATED	31
◊	32.0	PLATED	10
○	35.0	PLATED	4
+	140.0	PLATED	4

					NAME ADXL314Z - Evaluation Circuit Board											
					DWN/DESS GL		DATE 2020-04-21		CHK/VER DR		DATE 2020-04-21		APPD/APP DR		DATE 2020-04-21	
					A		CODE		301-1019							
					SCALE/ECHELLE 1:1		INTEMPCO CONTROLS LTD LES CONTROLES INTEMPCO LTEE					SHEET FEUILLE		1 OF DE 1		
LTR/LET	REVISION	DATE	DWN/DESS	CHK/VER												

CE DESSIN ET SES SPECIFICATIONS SONT LA PROPRIETE DE LES CONTROLES INTEMPCO LTEE. IL NE PEUVENT ETRE PRETES, TRANSFERES, REPRODUITS, COPIES OU SERVIR A LA FABRICATION, L'ACHAT OU LA VENTE D'ARTICLES SANS LE CONSENTEMENT ECRIT DE LES CONTROLES INTEMPCO LTEE.
THIS DRAWING AND SPECIFICATIONS HEREIN ARE THE PROPERTY OF INTEMPCO CONTROLS LTD AND MUST NOT BE LOANED OR OTHERWISE TRANSFERRED TO ANY THIRD PARTY OR REPRODUCED, COPIED OR USED IN CONNECTION WITH THE MANUFACTURE PURCHASE OR SALE OF ITEMS WITHOUT WRITTEN CONSENT OF INTEMPCO CONTROLS LTD.