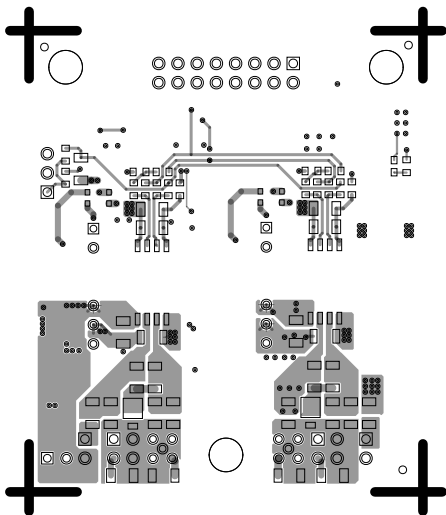
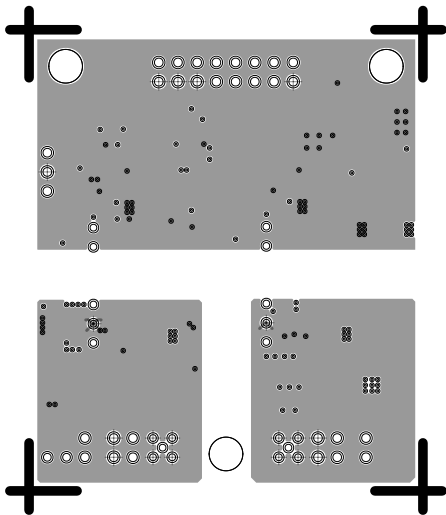


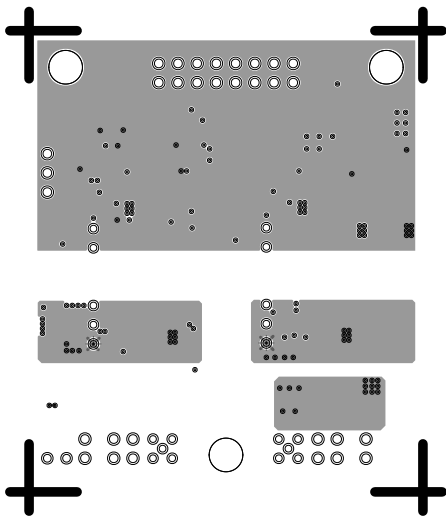
L1 PRIMARY
08-073775-01
REV A



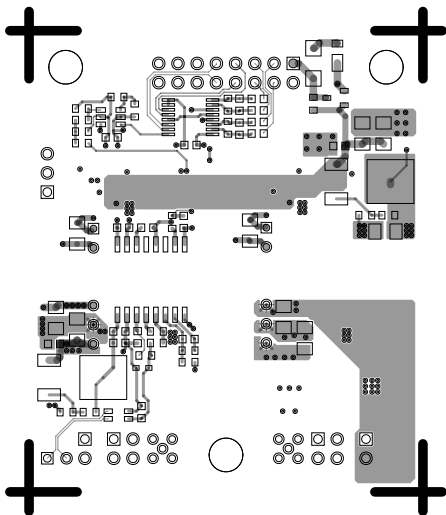
L2 GND
08-073775-07
REV A



L3 PWR
08-073775-08
REV A



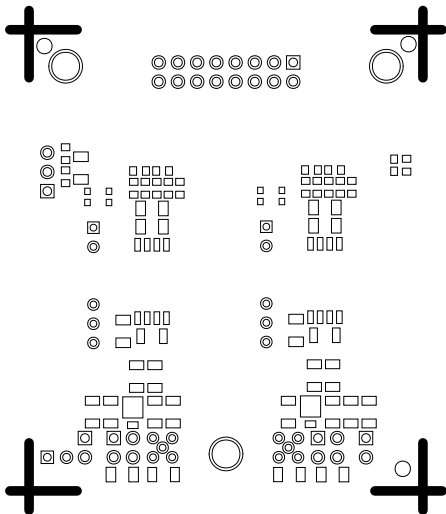
L4 SECONDARY
08-073775-02
REV A



PCB layout for EVAL-ADUM4122WHB1Z. The diagram shows the placement of various components including integrated circuits (ICs), capacitors, resistors, inductors, and connectors. Key features include a 'HIGH VOLTAGE' warning symbol, a 'PRIMARY SIDE' label, and a revision number '08-073775 REV. A Z'. The layout is oriented with a top edge and a right edge, with component footprints and labels distributed across the board area.

08-073775 REV A Z
PRIMARY SIDE
EVAL-ADUM4122WHB1Z

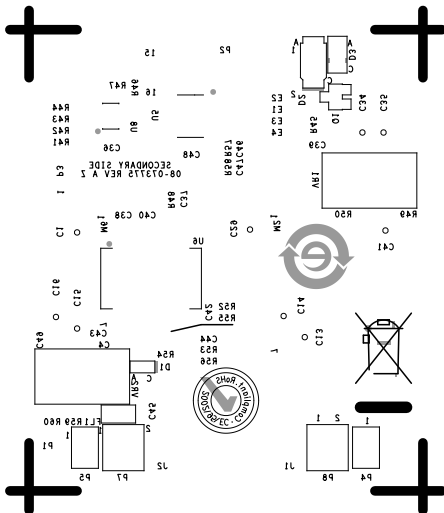
SOLDERMASK PRIMARY
08-073775-04
REV A



SILKSCREEN SECONDARY

08-073775-05

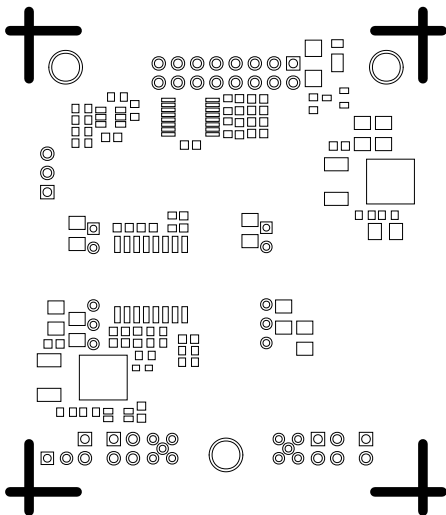
REV A



SOLDERMASK SECONDARY

08-073775-06

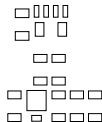
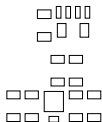
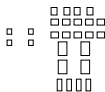
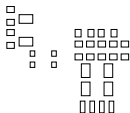
REV A



PASTEMASK PRIMARY

08-073775-09

REV A



PASTEMASK SECONDARY
08-073775-10
REV A

