

ADP
PROPRIETARY INFORMATION
THIS DOCUMENT IS THE SOLE PROPERTY OF ADI. THE RELEASE OF DATA
CONTAINED IN THIS DOCUMENT AND THE REPRODUCTION OF THIS DOCUMENT, IN WHOLE
OR IN PART, WITHOUT THE WRITTEN PERMISSION OF ADI ARE PROHIBITED.

REVISIONS			
ZONE	REV	DESCRIPTION	DATE APPROVED
	1	ENGINEERING RELEASE	
	2	ADD 3 RESISTORS & TO OUTPUT CAPS	01DEC11 JW
	3	CHG I/O CONNECTORS, REV COPPER PWR	05NOV18 JW

NOTES: (UNLESS OTHERWISE SPECIFIED)

1. INTERPRET DRAWING IN ACCORDANCE WITH ASME Y14.5M-1994
DIMENSIONING AND TOLERANCING.

2. ALL FABRICATION AND PLATING PER IPC-A-600, CLASS 2.
THE MINIMUM DIELECTRIC THICKNESS TO BE 0.0035 AS
INTERPRETED BY IPC-A-600.

3. MATERIAL: PLASTIC SHEET LAMINATE TYPE FR4, .062 \pm .005
THICK. 2oz COPPER CLAD START, ALL LAYERS. FINISHED
PLATING THICKNESS TO BE 2oz COPPER MINIMUM, OUTSIDE
LAYERS ONLY.

MATERIALS MUST MEET:

- IPC-L-108B SPECIFICATIONS FOR THIN METAL CLADS.
BASE MATERIALS
- ANSI/IPC-L-115B SPECIFICATIONS FOR RIGID METAL
CLAD BASE MATERIALS.

4. ALL HOLES SHALL HAVE A 0.0012" MINIMUM COPPER BARREL
WALL THICKNESS. PLATING IN ISOLATED AREAS NOT LESS
THAN 0.0008". MINIMUM. HOLES SIZES ARE AFTER PLATING.

5. SOLDER MASK OVER BARE COPPER (SMBRC) BOTH SIDES USING
A ADI APPROVED LIQUID-PHOTO-IMAGEABLE MASK (LPI),
COLOR GREEN.

6. FINISH TO BE ELECTROLESS NICKEL IMMERSION GOLD (ENIG)
PER IPC-4552.
THE SOLDERABILITY OF EACH LOT SHALL BE VERIFIED IN
ACCORDANCE WITH J-STD-003, CLASS 3.

7. ALL NON-DIMENSIONED HOLES SHALL BE WITHIN 0.003",
OF HOLE CENTERS.

8. LAYER-TO-LAYER REGISTRATION SHALL BE WITHIN 0.003",
ANY DIRECTION.

9. REMOVE ALL BURRS AND SHARP EDGES AFTER FUSING AND
PLATING.

10. SILKSCREEN LEGEND SHALL BE APPLIED WITH A
NON-CONDUCTIVE, WHITE EPOXY INK. LEGEND NOT
PERMITTED ON SOLDERABLE LANDS.

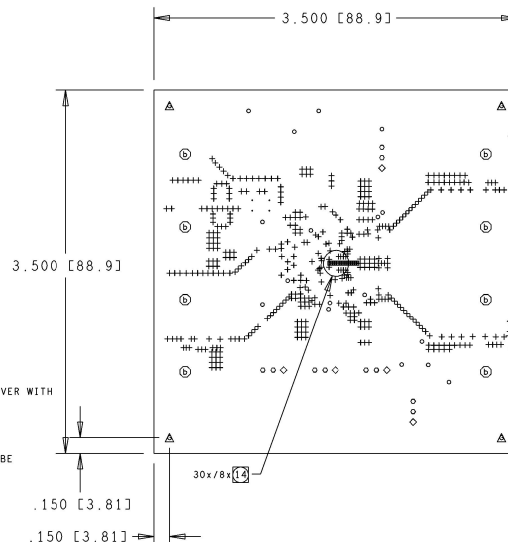
11. VENDOR LOGO AND DATE CODE MARKING REQUIRED.

12. USE ADI SUPPLIED ELECTRONIC ARTWORK AND DATA.

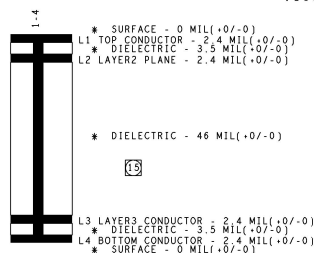
13. ARTWORK MODIFICATIONS ARE PROHIBITED WITHOUT WRITTEN
AUTHORIZATION FROM ADI. GLOBAL MICROMODIFICATION
OF PHOTO-TOOLING TO COMPENSATE FOR MANUFACTURING PROCESSES
ARE ACCEPTABLE WITHIN MASTER DRAWING SPECIFICATIONS.

14. 6 MIL DRILL (30) & 8 MIL DRILL (8). FINISH PLANARIZED AND PLATED OVER WITH
COPPER AND SURFACE FINISH. PAD TO PAD CO-PLANARITY TO BE \pm .05MM
OPTIONAL FILL WITH PETERS PP-2795 OR SAN-EIKAGAKU PHP-900
OR EQUIVALENT. MAINTAIN NO VOID PAD, 100% SOLIDS FILL MATERIAL.

15. NOTE DIELECTRIC THICKNESS CROSS SECTION DETAIL L1-L2 & L3 & L4 TO BE
3.5 MIL TO 4 MIL MAXIMUM



HOLE CHART				
ALL UNITS ARE IN INCHES				
FIGURE	SIZE	TOLERANCE	PLATING	QTY
W	0.006	+ .003/- .003	PLATED	30
+	0.008	+ .003/- .003	PLATED	34
+	0.01	+ .003/- .003	PLATED	407
o	0.014	+ .003/- .003	PLATED	19
-	0.042	+ .004/- .004	PLATED	4
o	0.045	+ .004/- .004	PLATED	5
o	0.045	+ .004/- .004	PLATED	10
o	0.235	+ .004/- .004	PLATED	8
A	0.144	+ .004/- .004	NON-PLATED	4



DESIGN CROSS SECTION CHART
TOTAL THICKNESS 62.6 MIL

UNLESS OTHERWISE SPECIFIED DIMENSIONS ARE IN INCHES (MM) TOLERANCES ARE: FRACTIONS DECIMALS ANGLES ± 1/64 ±.005 ±.5 DEG		CONTRACT NO.	DATE
DRAWN		JWOLKE	01DEC11
CHECK		ENG	ELECTRONIC APPROVAL
FINISH		Q.A.	
NEXT ASSY		USED ON	
APPLICATION		DO NOT SCALE DRAWING	

ANALOG DEVICES		3550 North First Street SAN JOSE, CA 95134	
FABRICATION DRAWING			
ADP5055_56		DEMO	
EVALUATION TEST			
SIZE	FROM	DRG NO.	REV
D		ADP5055-56-001	3
SCALE NONE		SHEET 1 OF 1	