


REVISION			
REV	DESCRIPTION	DATE	APPROVED
A	INITIAL RELEASE		
C	AS PER ECR-089465	25OCT19	J.VILLANU
D	AS PER ECR-094813	14MAY20	K.HOFFMAN
D1	AS PER ECR-098266	13OCT20	K.HOFFMAN
E	AS PER ECR-111608	23NOV22	C.AURE

ASSEMBLY NOTES:

1. BOARD ACCEPTABILITY PER ANALOG DEVICES, INC. SPECIFICATION TST00119 (LATEST REVISION).
2. REPAIRS PER IPC-7711/21(LATEST REVISION) ARE ALLOWED.
3. REPAIRS ARE NOT ALLOWED IN SOLDERMASK FREE AREAS ON EITHER SIDE OF THE BOARD.
4. RoHS COMPLIANCE: ASSEMBLY VENDOR SHOULD ASSURE COMPLIANCE WITH LEAD-FREE AND RoHS PCB ASSEMBLY STANDARDS (EU RoHS DIRECTIVE 2002/95/EC).
5. FROM SECONDARY SIDE, INSERT TWO 16MM STANDOFFS AT HOLES ON TOP LEFT & BOTTOM LEFT CORNERS(STAND ON SECONDARY SIDE, NUT ON PRIMARY SIDE)

PRIMARY SIDE

UNLESS OTHERWISE SPECIFIED DIMENSIONS ARE IN MM TOLERANCES DECIMALS FRACTIONS ANGLES .XX ±0.25 ± 1/32 ±.2 .XXX ±0.127	ASSEMBLY				ANALOG DEVICES INTERNATIONAL ERDC Building Raheen Business Park Raheen, LIMERICK, IRELAND	
	APPROVAL		DATE		TITLE	
	MATERIAL		DRAWN BY Pat Sheahan	31JAN2018		EV-ADAQ7768-1F1ZU6
		DESIGNED				
		CHECKED				
FINISH	APPROVED		SIZE	FSCM NO	DRAWING NUMBER	REV
	MFG ENGINEER		A4		01-051731	E
DO NOT SCALE DWG			SCALE	1/1	SHEET 1 OF 2	

4

3



2

1

D

D

TOP VIEW

4

3

1

2

C

C

BOTTOM VIEW

CHAMFER

1

2

4

3

YSML126W98H31-ASSY-DETAIL

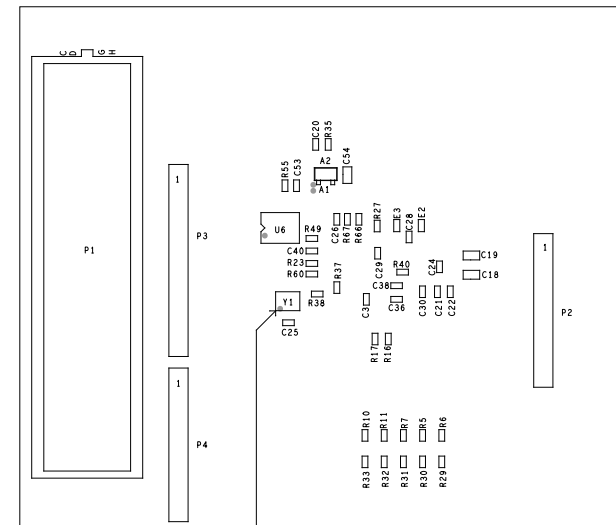
DETAIL A

B

B

A

A



SEE DETAIL A

SECONDARY SIDE

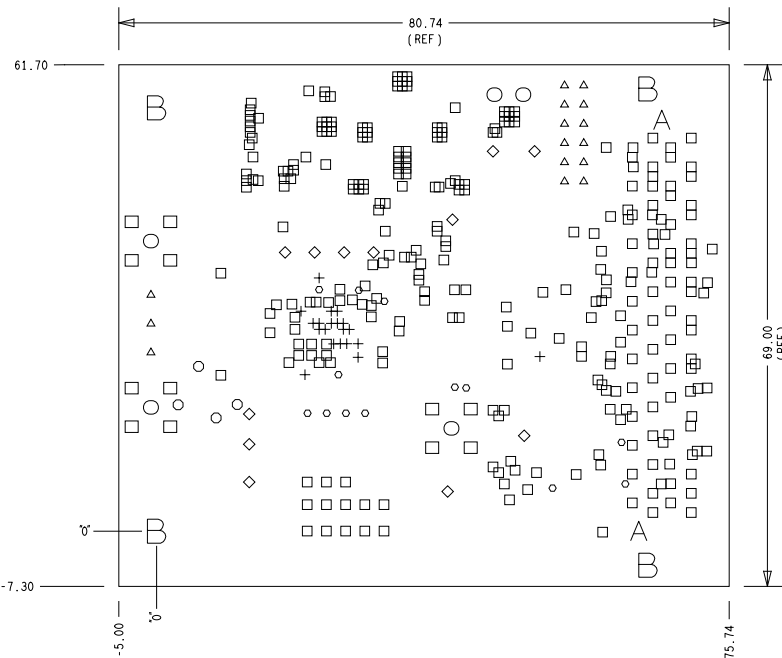


ANALOG DEVICES INTERNATIONAL
ERDC Building
Raheen Business Park
Raheen, LIMERICK, IRELAND

SIZE	FSCM NO	DRAWING NUMBER	REV
A4		01-051731	E
SCALE	1 / 1		SHEET 2 OF 2

REVISION			
REV	DESCRIPTION	DATE	APPROVED
A	INITIAL RELEASE		
C	AS PER ECR-089465	25OCT19	J.VILLANU
D	AS PER ECR-094813	14MAY20	K.HOFFMAN
D1	AS PER ECR-098266	13OCT20	K.HOFFMAN
E	AS PER ECR-111608	23NOV22	C.AURE

HOLE TOLERANCE
UNLESS SPECIFIED
PLATED: +/- .0762 MM
NON PLATED: +/- .0508 MM



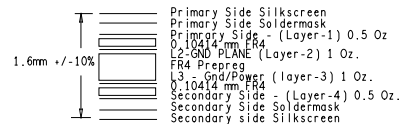
FINISHED HOLES IN MM				
ALL UNITS ARE IN MILLIMETERS				
FIGURE	SIZE	PLATED	QTY	TOLERANCE/NOTES
+	0.2032	PLATED	20	DIA MAX
□	0.2489	PLATED	299	DIA MAX
◦	0.4089	PLATED	13	
○	0.5105	PLATED	4	
◇	1.0211	PLATED	12	
△	1.1405	PLATED	15	
○	1.27	PLATED	5	
□	1.5189	PLATED	12	
A	1.27	NON-PLATED	2	+.0508 MM/-0 MM
B	3.175	NON-PLATED	4	

SEE NOTE 11
SEE NOTE 11


FABRICATION NOTES:

- Material: 4 Layer FR4 glass epoxy laminate 1.6mm +/- 10%, material to be RoHS compliant. Board to be fabricated per IPC-6012A, CLASS 2.
- Plated thru holes and conductive pattern electroplated with 25uM min. thick copper. Terminal areas and plated thru holes to be ENIG plated.
- Processing tolerance:
 - A. Conductive pattern front to back registration within 0.125mm total.
 - B. Minimum annular ring surrounding holes 0.05mm.
 - C. Finished conductive pattern to be within 0.05mm of true size.
 - D. Minimum feature size 0.2mm
 - E. Minimum air gap 0.12mm
- Warp and twist within 0.1875mm per 25mm (0.75%)
- Dimensions are for the finished part.
- SOLDERMASK: liquid Photo Imageable soldermask over bare copper (SMOBC), colour GREEN both sides using the pattern provided. No mask is permitted on the terminal areas. Soldermask to etch registration within 0.125mm total.
- SCREENING: Screen component outlines and nomenclature using indelible white ink on both sides. Nomenclature shall be legible. Screen to etch registration within 0.15mm total.
- Electrically test 100%.
- Break all sharp edges 0.35mm Radius max.
- Manufacturer UL and Date codes on the bottom side silkscreen as indicated.
- Via-in-pad. Any via in pad must be filled and levelled.

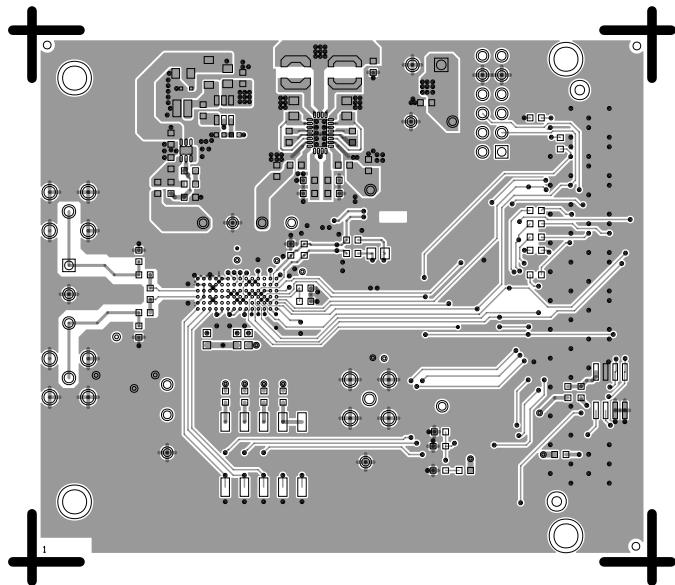
4 LAYER STACKUP



PRIMARY SIDE

UNLESS OTHERWISE SPECIFIED DIMENSIONS ARE IN MM TOLERANCES DECIMALS FRACTIONS ANGLES .XX +/-0.25 +/- 1/32 +/- 2 .XXX +/-0.127	FABRICATION		 ANALOG DEVICES INTERNATIONAL ERDC Building Raheen Business Park Raheen, LIMERICK, IRELAND	
	APPROVAL	DATE		
MATERIAL	DRAWN BY DESIGNED	31JAN2018	TITLE EV-ADAQ7768-1F1ZU6	
	CHECKED			
FINISH	APPROVED		SIZE A4	FSCM NO
	MFG ENGINEER			
DO NOT SCALE DWG			SCALE 1/1	DRAWING NUMBER 09-051731
				REV E
				SHEET 1 OF 1

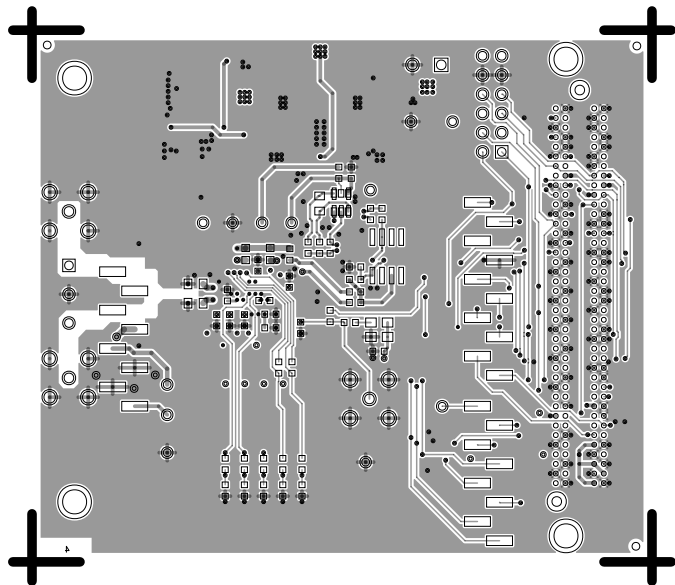
L1 PRIMARY
08-051731-01
REV E



L4 SECONDARY

08-051731-02

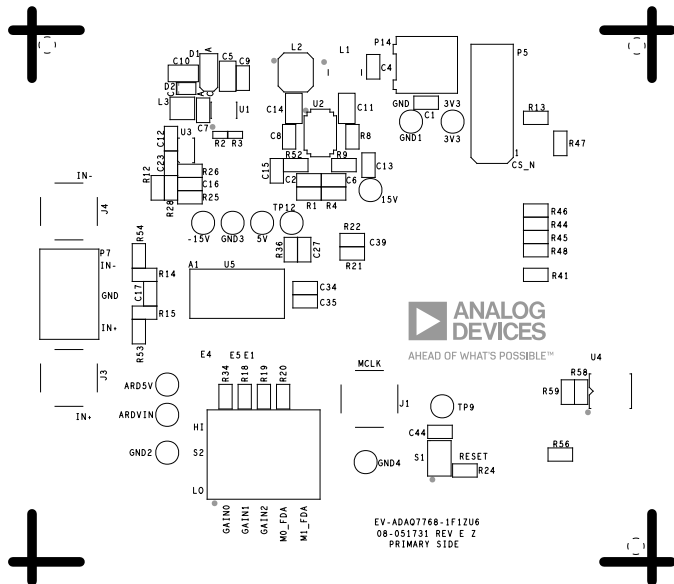
REV E



SILKSCREEN PRIMARY

08-051731-03

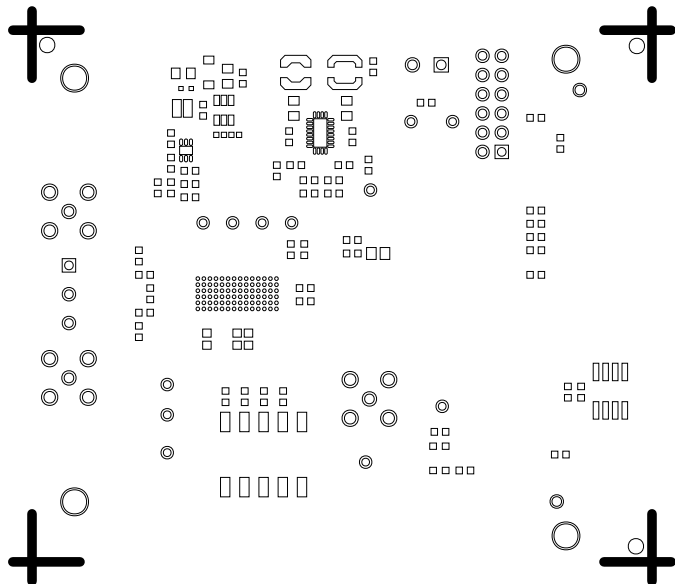
REV E



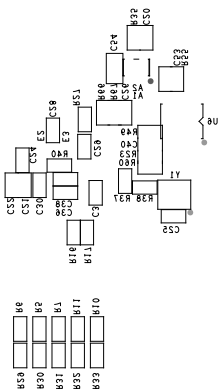
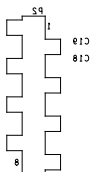
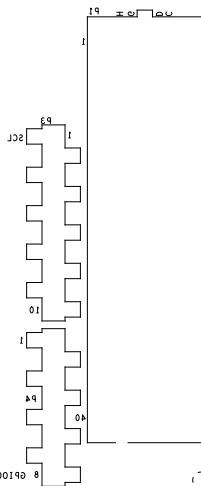
SOLDERMASK PRIMARY

08-051731-04

REV E



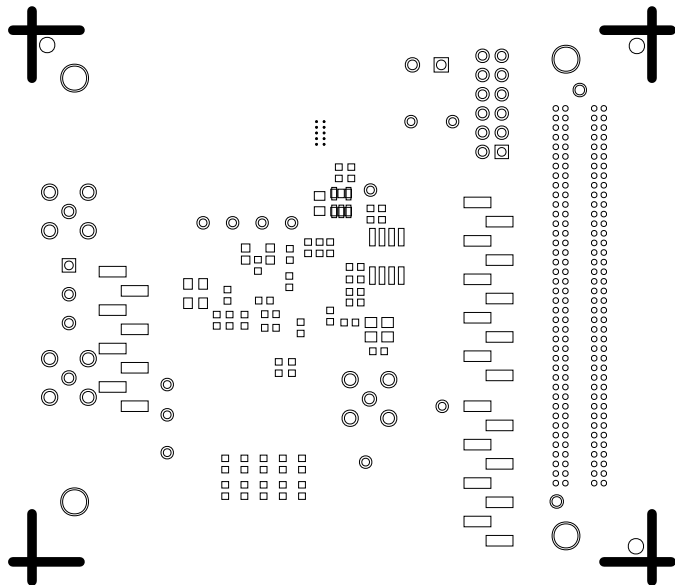
+

08-021731 REV E 2
SECONDARY SIDE

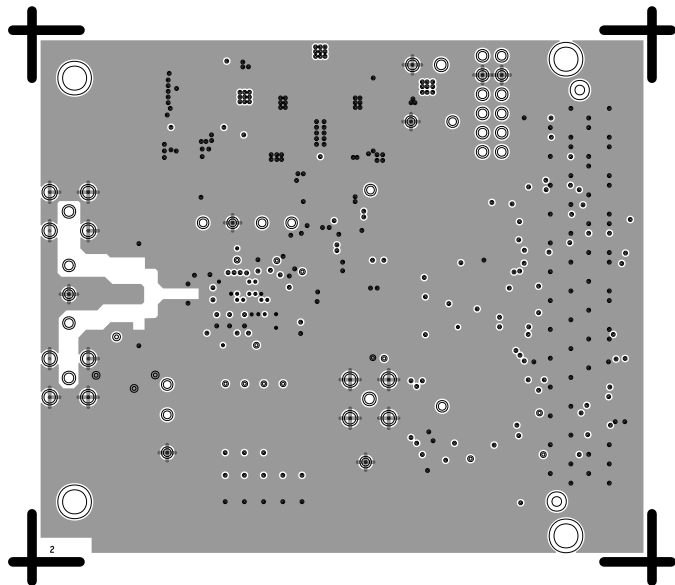
SOLDERMASK SECONDARY

08-051731-06

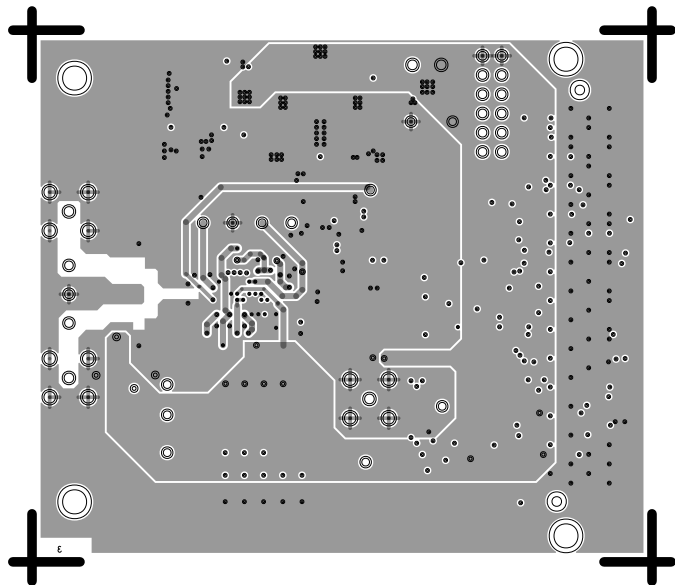
REV E



L2 GND
08-051731-07
REV E



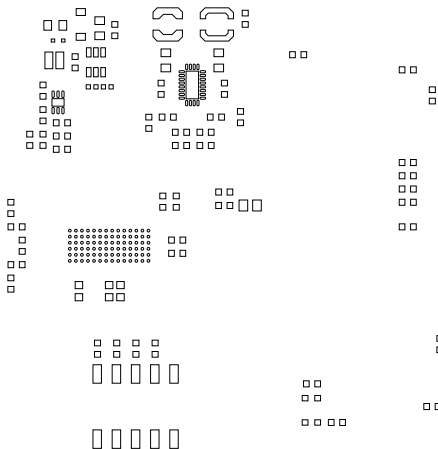
L3 PWR
08-051731-08
REV E



PASTEMASK PRIMARY

08-051731-09

REV E



PASTEMASK SECONDARY

08-051731-10

REV E

