

REVISIONS			
REV	DESCRIPTION	DATE	APPROVED
A	INITIAL RELEASE	05NOV24	V.SETHIA
B	AS PER ECR-125057	13MAR25	J.GARCIA
B1	AS PER ECR-126287	11AUG25	J.GARCIA

HOLE TOLERANCE
UNLESS SPECIFIED
PLATED: +/- 0.0762
NON PLATED: +/- 0.0508

DRILL CHART: TOP to BOTTOM				
ALL UNITS ARE IN MILLIMETERS				
FIGURE	SIZE	PLATED	QTY	TOLERANCE/NOTES
•	0.15	PLATED	31	DIA MAX
•	0.254	PLATED	351	DIA MAX
◦	1.016	PLATED	30	
•	1.143	PLATED	82	
◊	1.27	PLATED	1	
△	1.397	PLATED	20	
○	1.778	PLATED	4	
•	0.6604	NON-PLATED	1	+0.0508/-0
•	3.175	NON-PLATED	2	
•	1.1176x0.508	PLATED	4	
◦	0.9398x0.6604	NON-PLATED	1	

SEE NOTE #20
SEE NOTE #20

DRILL CHART: TOP to L2_GND				
ALL UNITS ARE IN MILLIMETERS				
FIGURE	SIZE	PLATED	QTY	TOLERANCE/NOTES
•	0.127	PLATED	24	SEE NOTE #19

LAMINATION DIAGRAM				
LAYER NUMBER	LAYER NAME	COPPER THICKNESS (OZ, INCH)	DIELECTRIC THICKNESS (INCH)	MATERIALS
1	TOP	1 OZ, 0.036 MM MIN		FINAL CU (THICKNESS AFTER PLATING)
2	L2_GND	1 OZ, 0.036 MM MIN	TBD	ISOLA 370HR/EQUIVALENT
3	L3_PWR	1 OZ, 0.036 MM MIN	TBD	ISOLA 370HR/EQUIVALENT
4	BOTTOM	1 OZ, 0.036 MM MIN	TBD	ISOLA 370HR/EQUIVALENT
				FINAL CU (THICKNESS AFTER PLATING)

THE FINISHED PCB THICKNESS TO BE: 1.600 MM +/-10%

PRIMARY SIDE

UNLESS OTHERWISE SPECIFIED DIMENSIONS ARE IN MM TOLERANCES DECIMALS .XX +- .25 .XXX +- .127 FRACTIONS +- 1/32 ANGLES +- 2	APPROVAL		DATE	<div><div></div><div>ANALOG DEVICES</div></div> <div>WWM DIVISION 804 WOBURN STREET WILMINGTON, MA 01887</div> <div>TITLE FABRICATION EVAL-AD5710R-ARDZ</div>			
	TEMPLATE ENGINEER N/A		N/A				
	HARDWARE SERVICES M.VALE		05NOV24				
	HARDWARE SYSTEMS N/A		N/A				
MATERIAL	TEST ENGINEER N/A		N/A	SIZE C FSCM NO 24355 DRAWING NUMBER 09-083459 REV B1			
	COMPONENT ENGINEER N.CATALAN		05NOV24				
	TEST PROCESS N/A		N/A				
	HARDWARE RELEASE E.CONDA		05NOV24				
FINISH	DESIGNER C.SARIEGO		05NOV24	SCALE 1/1 SHEET 1 OF 2			
	PTD ENGINEER V.SETHIA		05NOV24				
	CHECKER N/A		N/A				
	DO NOT SCALE DWG						



NOTES: UNLESS OTHERWISE SPECIFIED

1. DIMENSIONS ARE IN INCHES (EXCEPT WHERE NOTED).
ALL DOCUMENTS & SPECIFICATIONS REFERRED TO BELOW SHOULD BE THE LATEST REVISIONS.

MATERIAL: HOMOGENOUS MATERIALS IN THIS BOARD SHALL BE COMPLAINT WITH THE EU DIRECTIVE 2002/95/EC

2. BOARD MATERIAL:(USE CHECKED ITEMS)
- (X) ISOLA 370HR OR S1000-2 OR IT180 OR EQUIVALENT
 - () ISOLA-FR408HR OR EQUIVALENT
 - () ISOLA IS410
 - () MEGTRON 6
 - () NELCO-4000-13
 - () ROGERS 4350B
 - () ROGERS 3003
 - () ARLON 85N
 - () EM370D
 - () OTHER _____
3. ALL LAMINATES & BONDING MATERIALS SHOULD BE SELECTED FROM IPC-4101 OR IPC-4103.(TG>170 DEGC TD>300 DEGC)
UL FLAMMABILITY RATING 94V-0. BOARD MATERIAL & CONSTRUCTION SHALL MEET THE REQUIREMENTS OF UL796/UL796F.
4. REFER TO IPC-6010 SERIES, CLASS 2 FOR FABRICATION. WORKMANSHIP SHALL CONFORM TO IPC-A-600, CLASS 2.
5. REFER TO LAMINATION DIAGRAM FOR OVERALL BOARD THICKNESS, TOLERANCE APPLIES AFTER ALL LAMINATION AND PLATING PROCESSES. FINISHED THICKNESS MEASURED FROM TOP COPPER TO BOTTOM COPPER.
6. BOW & TWIST NOT TO EXCEED 0.0075 INCHES (0.75%) PER LINEAR INCH AND SHOULD BE MEASURED PER IPC-TM-650, METHOD 2.4.22.
7. ACCEPTABILITY PER ADI SPECIFICATION TST00115.

TOOLING:

8. IMPEDANCE REQUIREMENTS: IF NO STACKUP IS DEFINED, THE VENDOR IS ALLOWED TO ADJUST THE DIELECTRIC THICKNESS & TRACE WIDTHS TO MEET THE IMPEDANCE REQUIREMENT. IF SPECIFIED, THE VENDOR MUST MEET THE REQUIREMENTS LISTED IN THE IMPEDANCE TABLE. ANY ADJUSTMENT MADE TO THE DEFINED STACKUP, TRACE WIDTH & SPACING THAT IMPACT THE REQUIREMENTS MUST HAVE WRITTEN APPROVAL FROM ADI.
9. FILLET OPTIONS TO ENHANCE RELIABILITY AT PAD JUNCTIONS WHERE SPACING PERMITS.
() FILLETS ALLOWED
(X) FILLETS NOT ALLOWED
10. THIEVING:
() VENDOR MAY ADD THIEVING TO COMPENSATE FOR LOW COPPER DENSITY AREAS MAINTAINING A MINIMUM 0.100 INCH CLEARANCE FROM ALL COPPER FEATURES,
(X) VENDOR MAY NOT ADD THIEVING TO COMPENSATE FOR LOW COPPER DENSITY AREAS.
11. LAYER TO LAYER REGISTRATION SHALL BE WITHIN 0.0762 MM.

FINISH:

12. DRILL SIZES ARE FINISHED HOLE SIZES. ALL HOLES SHALL BE LOCATED WITHIN 0.005 INCHES DTP,UNLESS SPECIFIED.
MINIMUM BARREL PLATING OF 0.001 INCHES. PLATED HOLES SHALL NOT BE ROUGH OR IRREGULAR SO AS TO HINDER PROPER SOLDER WICKING. BARREL RELIEF ON SOLDERMASK ALLOWED IN UNFILLED VIA IN PAD HOLES.
13. PLATING SPECIFICATION:
(X) REFER TO LAMINATION DIAGRAM FOR FINISHED COPPER WEIGHT/THICKNESS REQUIRMENTS
THE STARTING COPPER WEIGHT/THICKNESS CAN VARY AS LONG AS THE FINISHED COPPER WEIGHT/THICKNESS IS NOT LESS THAN THE SPECIFIED VALUE.
14. SURFACE FINISH:
(X) IMMERSION GOLD (ENIG) 1.58-3.94 MICRO INCHES OVER 118-236 MICRO INCHES MIN. OF ELECTROLESS NICKEL PER IPC-4552
() OSP (ORGANIC SOLDERABILITY PRESERVATIVE)
() IMMERSION SILVER
() SOFT WIRE BONDABLE GOLD 30-50 MICRO INCHES OF SOFT WIRE
BONDABLE GOLD OVER 100-150 MICRO INCHES OF NICKEL
() EDGE CONNECTOR FINGERS ARE TO BE PLATED WITH 100 MICRO-INCHES(.0001") OF LOW STRESS NICKEL UNDER 30 MICRO-INCHES (.00003") OF GOLD
() OTHER_____
15. SOLDERMASK:
SOLDERMASK OVER BARE COPPER OR BARE GOLD (BOTH SIDES) TO MEET IPC-SM-840.
IF PRESENT,DO NOT MODIFY SOLDERMASK DEFINED PADS (MASK OPENINGS LESS THAN COPPER PAD) WITHOUT APPROVAL.
(X) LPI
() OTHER_____

COLOR
(X) GREEN
() OTHER_____
16. APPLY SILKSCREEN TO BOTH SIDES USING A NON-CONDUCTIVE, EPOXY BASED INK PER ARTWORK.
(X) WHITE
() OTHER

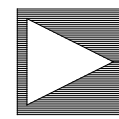
TESTING:

17. FINAL ELECTRICAL TEST TO BE PERFORMED USING PROVIDED IPC-D-356A NETLIST OR ODB++ FORMAT FILE.
THE PCB SHALL HAVE A VERIFICATION STAMP.
18. A TIME DOMAIN REFLECTOMETER REPORT (TDR) FOR EACH IMPEDANCE CONTROLLED LAYER & A CERTIFICATE OF COMPLIANCE SHALL BE PROVIDED BY VENDOR AT TIME OF SHIPMENT. INSTANCES WHERE TDR TESTING CAN'T BE PERFORMED BECAUSE THE TRACE LENGTH IS TOO SHORT ON THE OUTER LAYERS AT THE PIN ESCAPES IS ACCEPTABLE, ALL OTHER INSTANCES MUST BE REPORTED.

MISCELLANEOUS:

19. IF PRESENT, ALL BLIND/BURIED VIAS WITH AN ASPECT RATIO <1:1 TO BE PLATED SHUT WITH COPPER WHEN USED AS VIA-IN-PAD OR AS A STACKED VIA. BLIND/BURIED VIAS WITH AN ASPECT RATIO >1:1 TO BE FILLED WITH NON-CONDUCTIVE EPOXY.
20. FOR VIA FILL INFORMATION REFER TO DRILL CHART:
(X) NON-CONDUCTIVE EPOXY FILL ALL 0.15, 0.254 MM DRILLED VIAS
() COPPER FILL ALL 0.XXXX INCHES DRILLED VIAS
21. INTENTIONAL SHORTS:
IF AN INTENTIONAL SHORT REPORT IS SUPPLIED AND DOES NOT MATCH THE FAB DATA THEN ADI APPROVAL IS REQUIRED.
22. PEMNUTS:
() PEMNUTS TO BE INSTALLED BY FABRICATOR
() PEMNUTS NOT TO BE INSTALLED BY FABRICATOR
(X) NOT APPLICABLE
23. MANUFACTURER TO ETCH/STAMP WITH PERMANENT NON-CONDUCTIVE INK
ON SECONDARY SIDE UNLESS OTHERWISE SPECIFIED:
A. UL CODE-FLAMMABILITY RATING FOR THOSE APPROVED MATERIALS(IF APPLICABLE)
B. DATE CODE
C. LOT NUMBER
D. MANUFACTURER LOGO
24. PANELIZATION:
BOARDS TO BE SHIPPED IN ARRAY AND KEPT INTACT
PANEL TO BE SUBJECTED TO CUSTOMERS APPROVAL
PANEL SOLDER PASTE STENCIL GERBER TO BE PROVIDED TO ANALOG
25. MINIMUM DESIGN LINE WIDTH IS .09 MM.
26. MINIMUM DESIGN LINE SPACING IS .087 MM.
- FAB NOTES REVISION: NOVEMBER 21 2022

PRIMARY SIDE



ANALOG
DEVICES

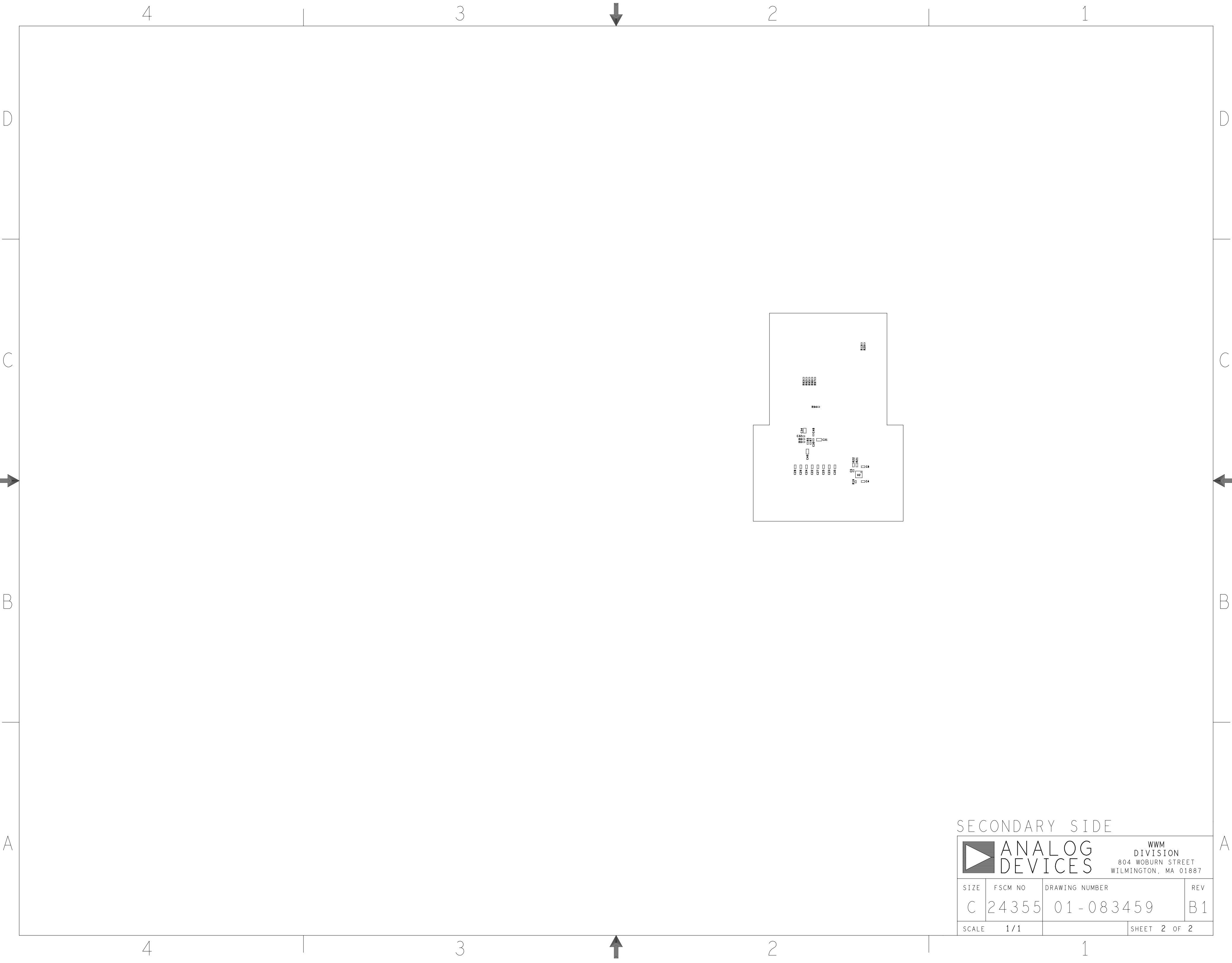
WWM
DIVISION
804 WOBURN STREET
WILMINGTON, MA 01887

SIZE	FSCM NO	DRAWING NUMBER	REV
C	24355	09-083459	B1
SCALE 1/1		SHEET 2 OF 2	

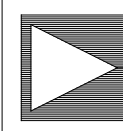
A

8. PLEASE INSTALL SCREW (M027766) ON PRIMARY SIDE AND STANDOFF (M028071) ON SECONDARY SIDE.
9. ALL TEST POINTS MUST BE INSTALLED ON THE TOP.

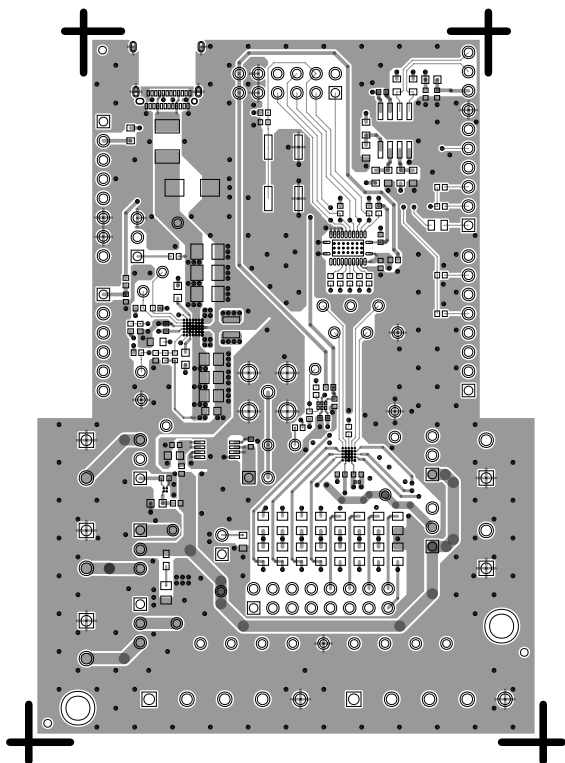
PRIMARY SIDE1



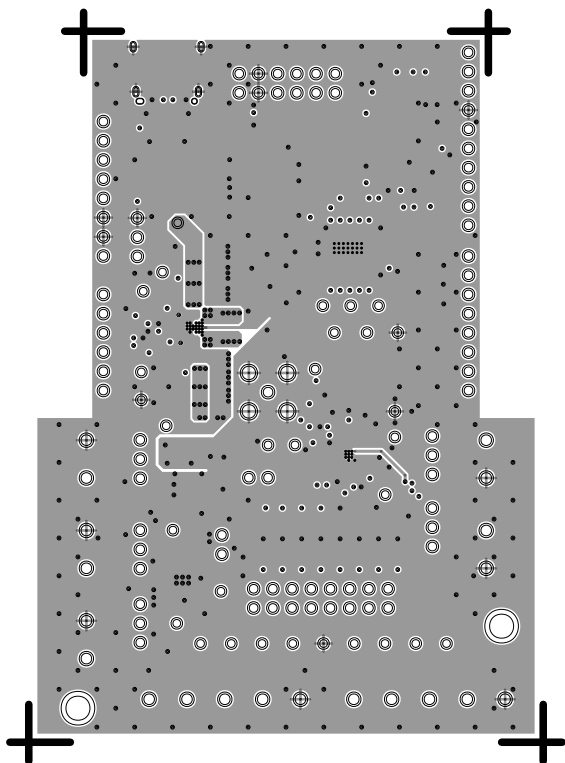
SECONDARY SIDE

		ANALOG DEVICES		WWM DIVISION 804 WOBURN STREET WILMINGTON, MA 01887	
		SIZE	FSCM NO	DRAWING NUMBER	REV
C		24355	01-083459		B1
SCALE		1/1		SHEET 2 OF 2	2

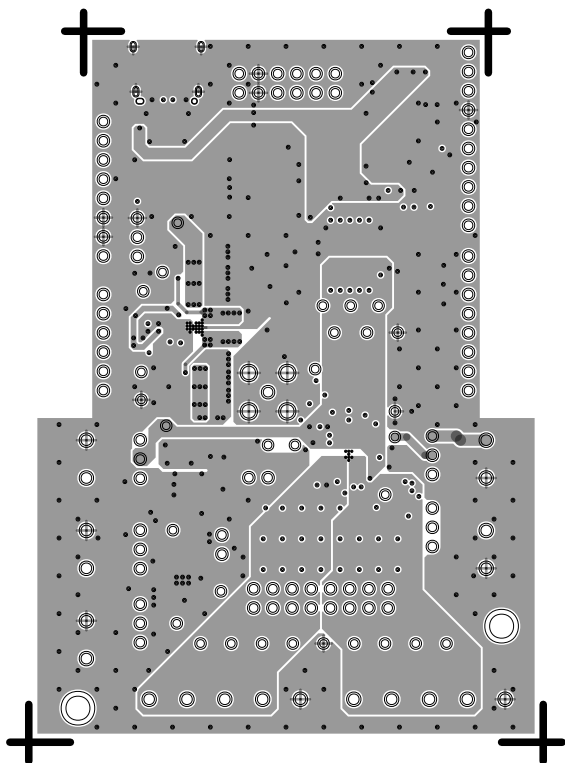
L1 PRIMARY
08-083459-01
REV B



L2 GND
08-083459-07
REV B



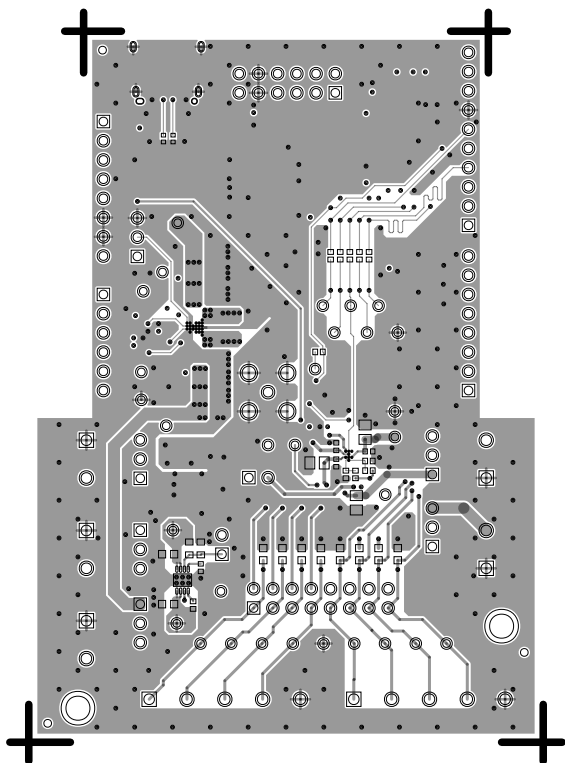
L3 PWR
08-083459-08
REV B



L4 SECONDARY

08-083459-02

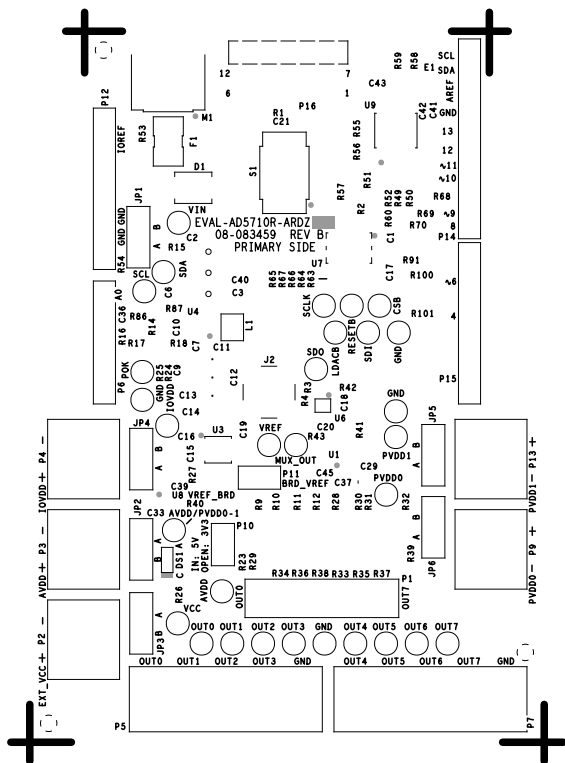
REV B



SILKSCREEN PRIMARY

08-083459-03

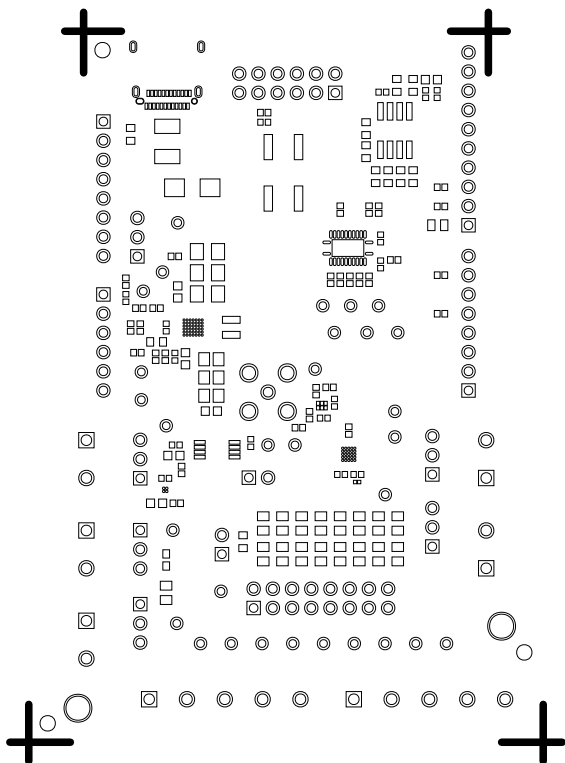
REV B



SOLDERMASK PRIMARY

08-083459-04

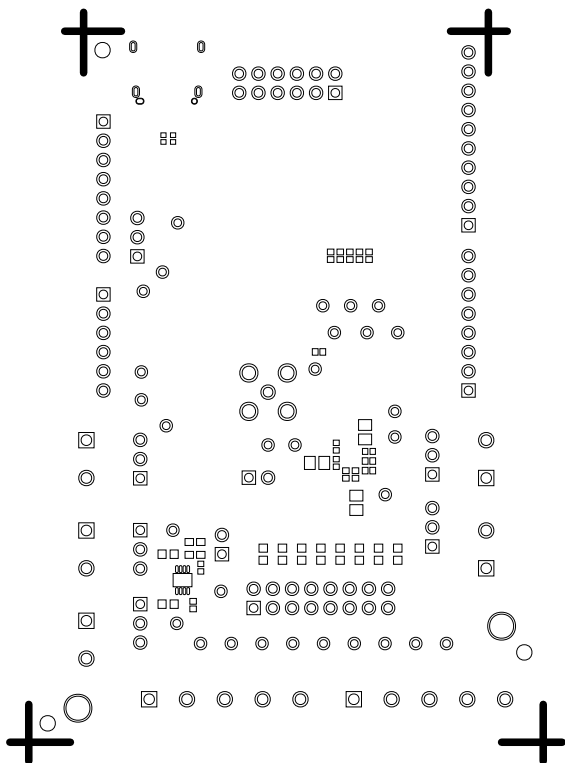
REV B



SOLDERMASK SECONDARY

08-083459-06

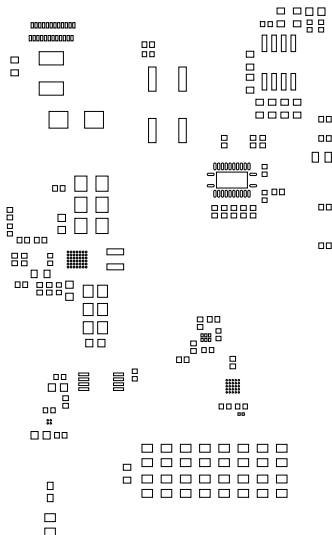
REV B



PASTEMASK PRIMARY

083459

REV B



PASTEMASK SECONDARY

08-083459-10

REV B

