

L1 TOP

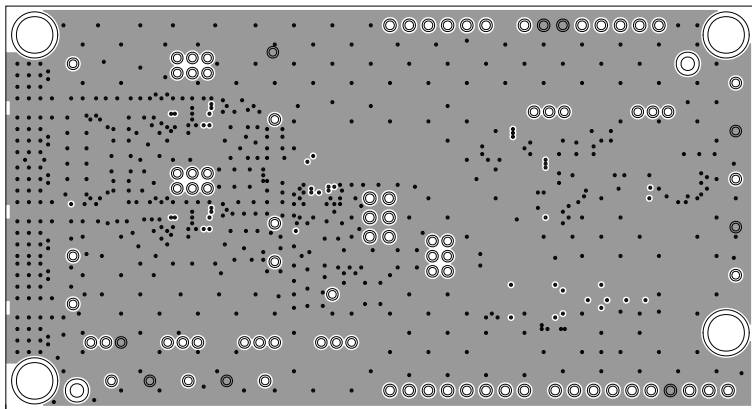
DATE: 07-21-23

08-072604-01

EVAL-AD4052/51/50-ARDZ

REV B

LOW POWER, 16/14/12-BIT EASY DRIVE SAR ADC



L2 GND

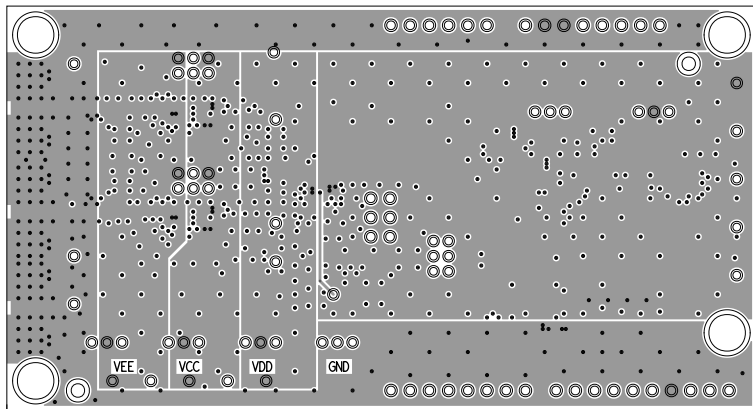
DATE: 07-21-23

08-072604-07

EVAL-AD4052/51/50-ARDZ

REV B

LOW POWER, 16/14/12-BIT EASY DRIVE SAR ADC



L3 PWR

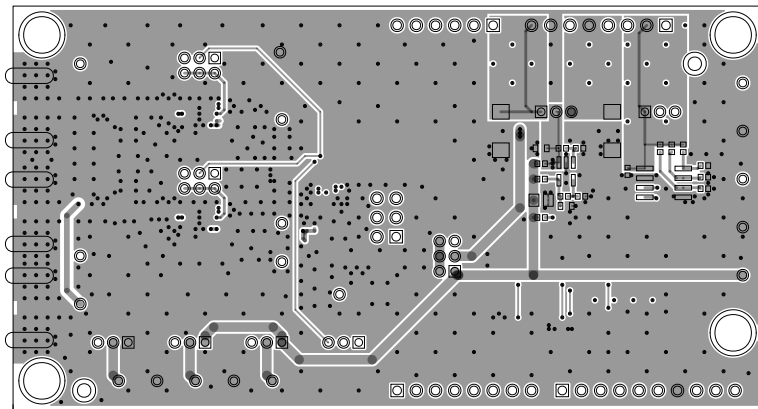
DATE: 07-21-23

08-072604-10

EVAL-AD4052/51/50-ARDZ

REV B

LOW POWER, 16/14/12-BIT EASY DRIVE SAR ADC



L4 BOTTOM

DATE: 07-21-23

08-072604-02

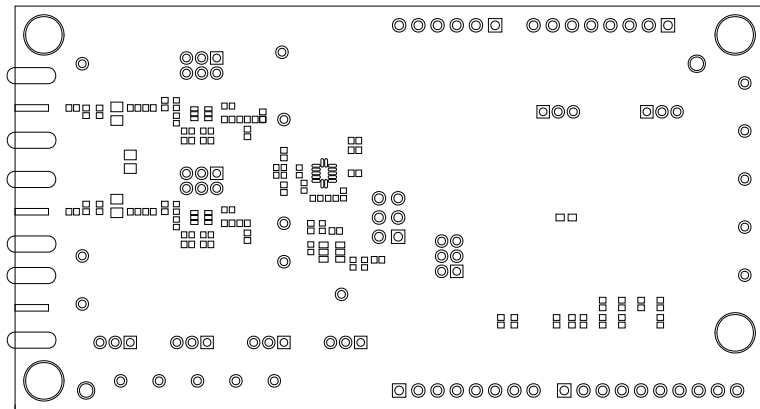
EVAL-AD4052/51/50-ARDZ

REV B

LOW POWER, 16/14/12-BIT EASY DRIVE SAR ADC







SOLDERMASK TOP

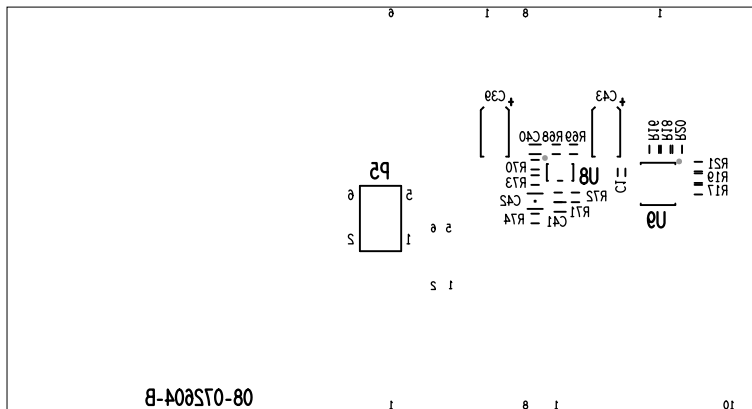
DATE: 07-21-23

08-072604-04

EVAL-AD4052/51/50-ARDZ

REV B

LOW POWER, 16/14/12-BIT EASY DRIVE SAR ADC



SILKSCREEN BOTTOM

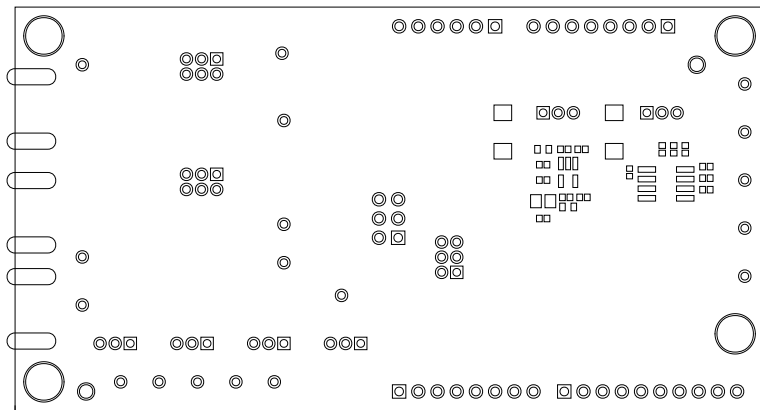
DATE: 07-21-23

08-072604-05

EVAL-AD4052/51/50-ARDZ

REV B

LOW POWER, 16/14/12-BIT EASY DRIVE SAR ADC



SOLDERMASK BOTTOM

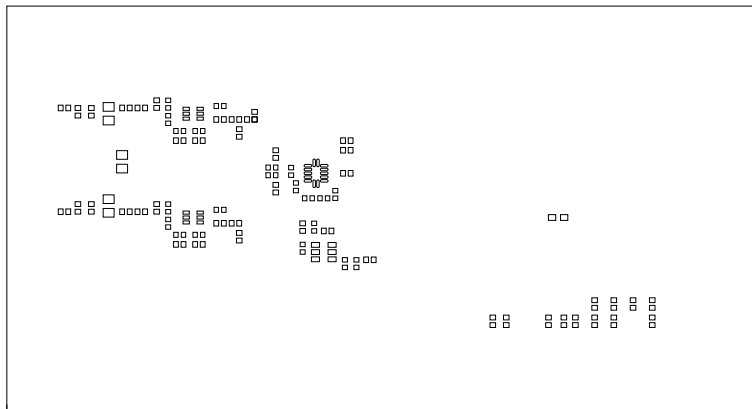
DATE: 07-21-23

08-072604-06

EVAL-AD4052/51/50-ARDZ

REV B

LOW POWER, 16/14/12-BIT EASY DRIVE SAR ADC



PASTEMASK TOP

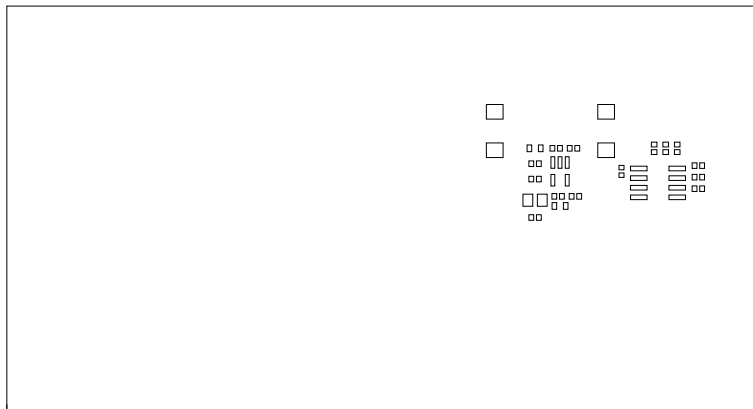
DATE: 07-21-23

08-072604-13

EVAL-AD4052/51/50-ARDZ

REV B

LOW POWER, 16/14/12-BIT EASY DRIVE SAR ADC



PASTEMASK BOTTOM

DATE: 07-21-23

08-072604-14

EVAL-AD4052/51/50-ARDZ

REV B

LOW POWER, 16/14/12-BIT EASY DRIVE SAR ADC