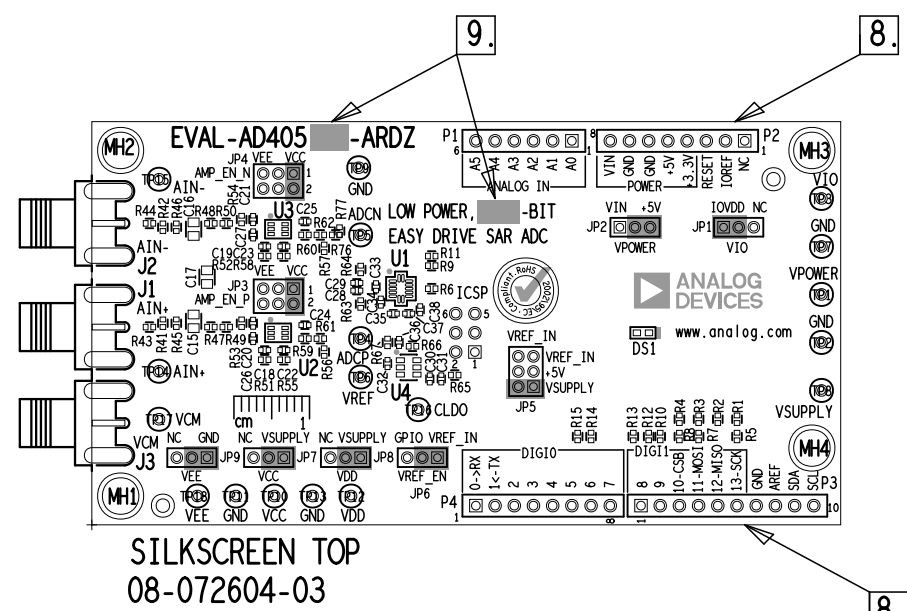
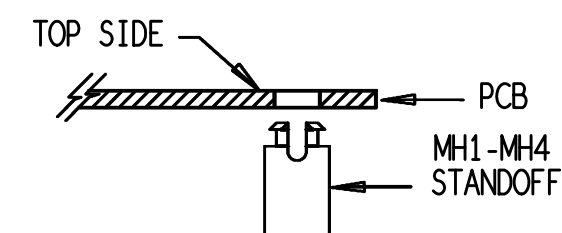


REVISIONS			
REV	DESCRIPTION	DATE	APPROVED
B	INITIAL RELEASE	07-21-23	TYLER S.
C	ECR-115479	10-27-23	TYLER S.




NOTES: UNLESS OTHERWISE SPECIFIED

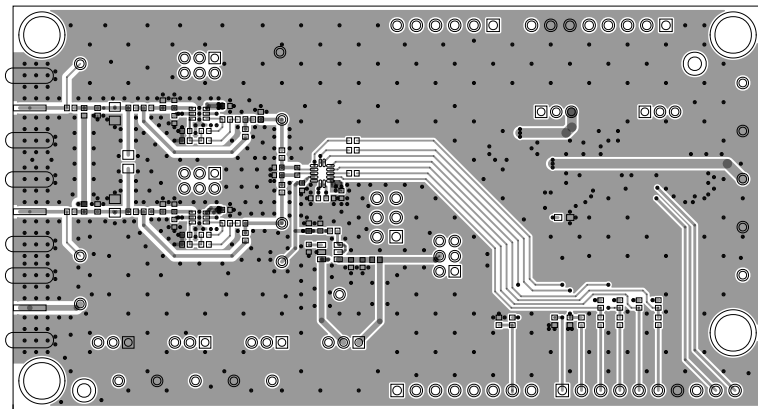
1. WORKMANSHIP SHALL BE IN ACCORDANCE WITH IPC-A-610.
2. ASSEMBLY PROCESS SHALL INCLUDE REFLOW SOLDER TOP AND BOTTOM SIDE.  
MAXIMUM TEMPERATURE SHALL NOT EXCEED 240 DEGREES CELSIUS.
3. OPTIONAL (OR DNI) PARTS ARE SPECIFIED ON THE BILL OF MATERIALS.  
LAND PATTERNS FOR THESE PARTS SHALL BE FREE OF SOLDER.  
MASK THE SOLDER STENCIL AT THESE LOCATIONS.
4. INSTALL SHUNTS ON JUMPERS AS SHOWN ON ASSEMBLY DRAWING.
5. DEPANELIZE BOARDS AFTER ASSEMBLY AND ROUTE-OUT THE  
BREAKOUT TABS ON ALL BOARD EDGES.
6. DO NOT APPLY ANY KIND OF ASSEMBLY STAMP OR QA STAMP
7. INSTALL STANDOFFS AS SHOWN BELOW:



8. P1-P5 HAVE LONG PINS AFTER INSTALLED. DO NOT CUT ANY OF THESE PINS.
9. USE BLACK PERMANENT MARKER TO WRITE ON THE WHITE BLOCK AREAS AS SHOWN BELOW:

MODEL NAME	-BIT	VARIANTS	SPEC
EVAL-AD405 <span style="border: 1px solid black; padding: 0 2px;">2</span> -ARDZ	<span style="border: 1px solid black; padding: 0 2px;">16</span>	072604-01	C-10932-A
EVAL-AD405 <span style="border: 1px solid black; padding: 0 2px;">1</span> -ARDZ	<span style="border: 1px solid black; padding: 0 2px;">14</span>	072604-02	C-11112-A
EVAL-AD405 <span style="border: 1px solid black; padding: 0 2px;">0</span> -ARDZ	<span style="border: 1px solid black; padding: 0 2px;">12</span>	072604-03	C-11113-A

UNLESS OTHERWISE SPECIFIED DIMENSIONS ARE IN INCHES  TOLERANCES  DECIMALS   FRACTIONS   ANGLES .XX -.010   --1/32   -- 2 .XXX -.005 .XXXX -.0050	APPROVAL		DATE		 ANALOG DEVICES	WWM DIVISION 804 WOBURN STREET WILMINGTON, MA 01887			
	TEMPLATE ENGINEER X		ddMMMyy			TITLE   ASSEMBLY DRAWING TOP  AD4052/51/50BCPZ LOW POWER, 16/14/12-BIT EASY DRIVE SAR ADC			
	HARDWARE SERVICES X		ddMMMyy						
	HARDWARE SYSTEMS X		ddMMMyy						
MATERIAL	TEST ENGINEER X		ddMMMyy		SIZE   FSCM NO   DRAWING NUMBER   REV  C   24355   01-072604   C				
	COMPONENT ENGINEER X		ddMMMyy						
	TEST PROCESS X		ddMMMyy						
	HARDWARE RELEASE X		ddMMMyy						
FINISH	DESIGNER X   K. TRAN				DO NOT SCALE DWG				
	PTD ENGINEER X   T. SCHMITT								
	CHECKER X		ddMMMyy						
					SCALE   1 / 1	SHEET   1   OF   2			



L1 TOP

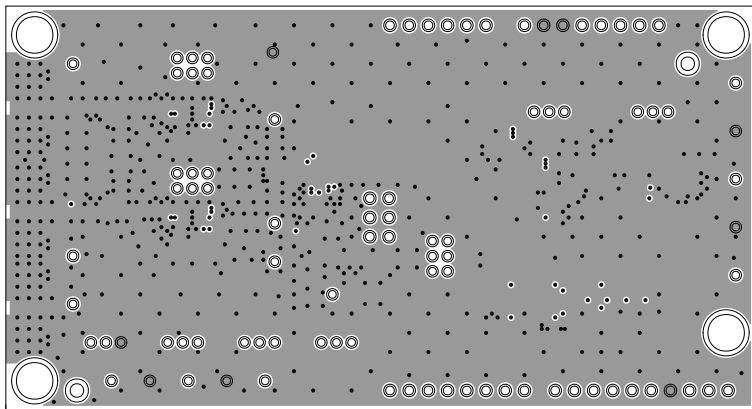
DATE: 07-21-23

08-072604-01

EVAL-AD4052/51/50-ARDZ

REV C

LOW POWER, 16/14/12-BIT EASY DRIVE SAR ADC



L2 GND

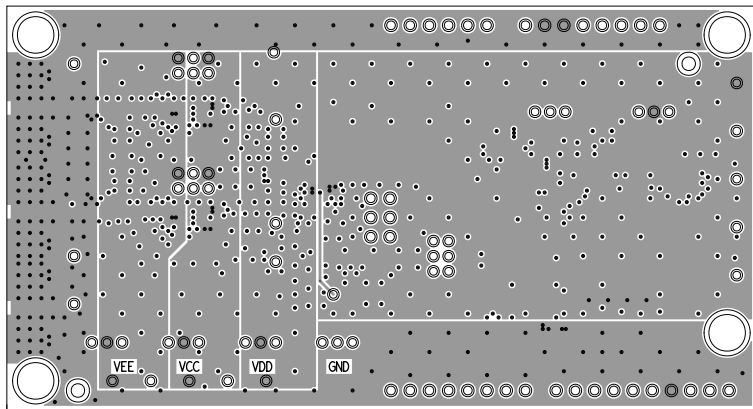
DATE: 07-21-23

08-072604-07

EVAL-AD4052/51/50-ARDZ

REV C

LOW POWER, 16/14/12-BIT EASY DRIVE SAR ADC



L3 PWR

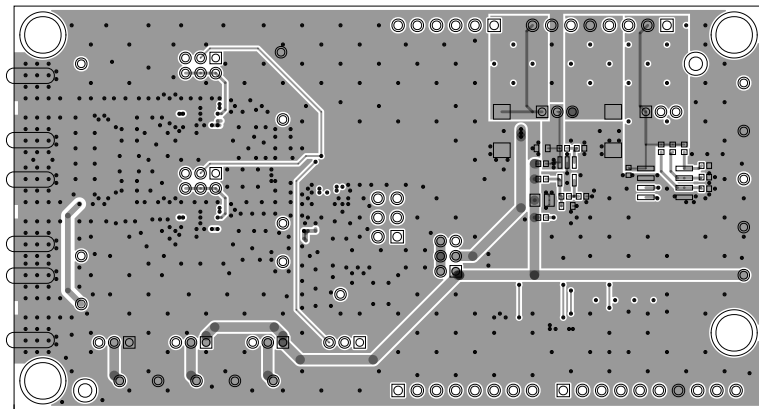
DATE: 07-21-23

08-072604-10

EVAL-AD4052/51/50-ARDZ

REV C

LOW POWER, 16/14/12-BIT EASY DRIVE SAR ADC



L4 BOTTOM

DATE: 07-21-23

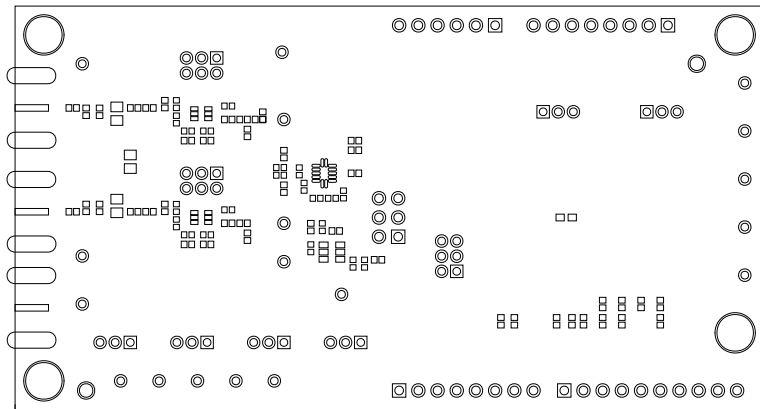
08-072604-02

EVAL-AD4052/51/50-ARDZ

REV C

LOW POWER, 16/14/12-BIT EASY DRIVE SAR ADC





SOLDERMASK TOP

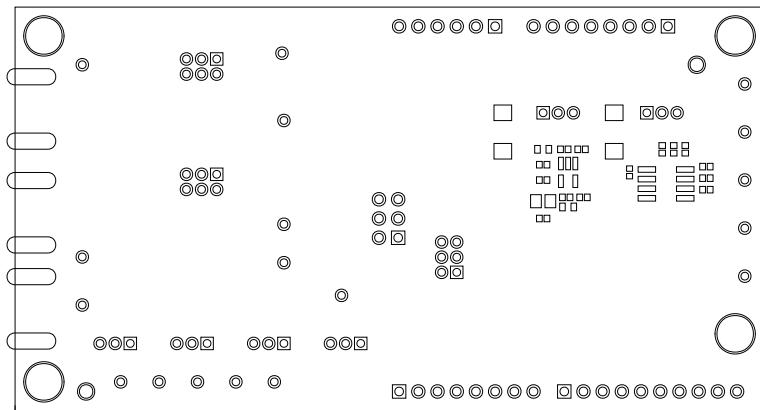
DATE: 07-21-23

08-072604-04

EVAL-AD4052/51/50-ARDZ

REV C

LOW POWER, 16/14/12-BIT EASY DRIVE SAR ADC



SOLDERMASK BOTTOM

DATE: 07-21-23

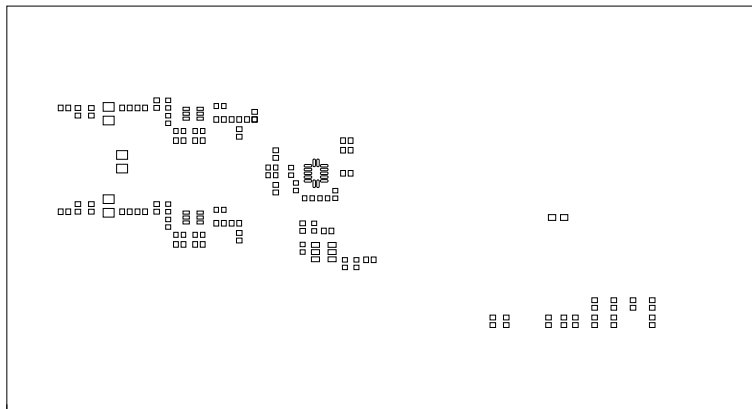
08-072604-06

EVAL-AD4052/51/50-ARDZ

REV C

LOW POWER, 16/14/12-BIT EASY DRIVE SAR ADC





PASTEMASK TOP

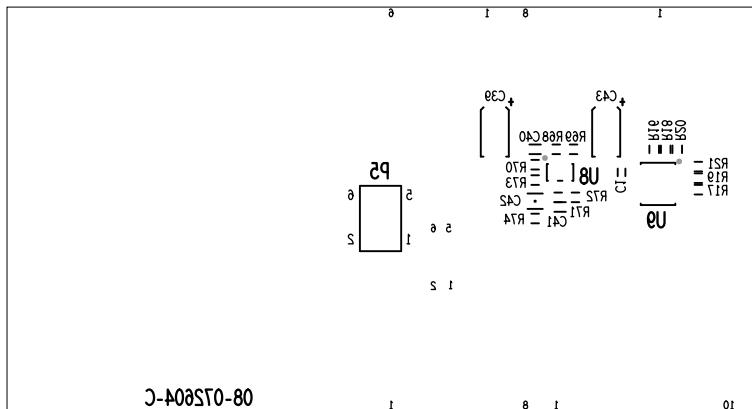
DATE: 07-21-23

08-072604-13

EVAL-AD4052/51/50-ARDZ

REV C

LOW POWER, 16/14/12-BIT EASY DRIVE SAR ADC



SILKSCREEN BOTTOM

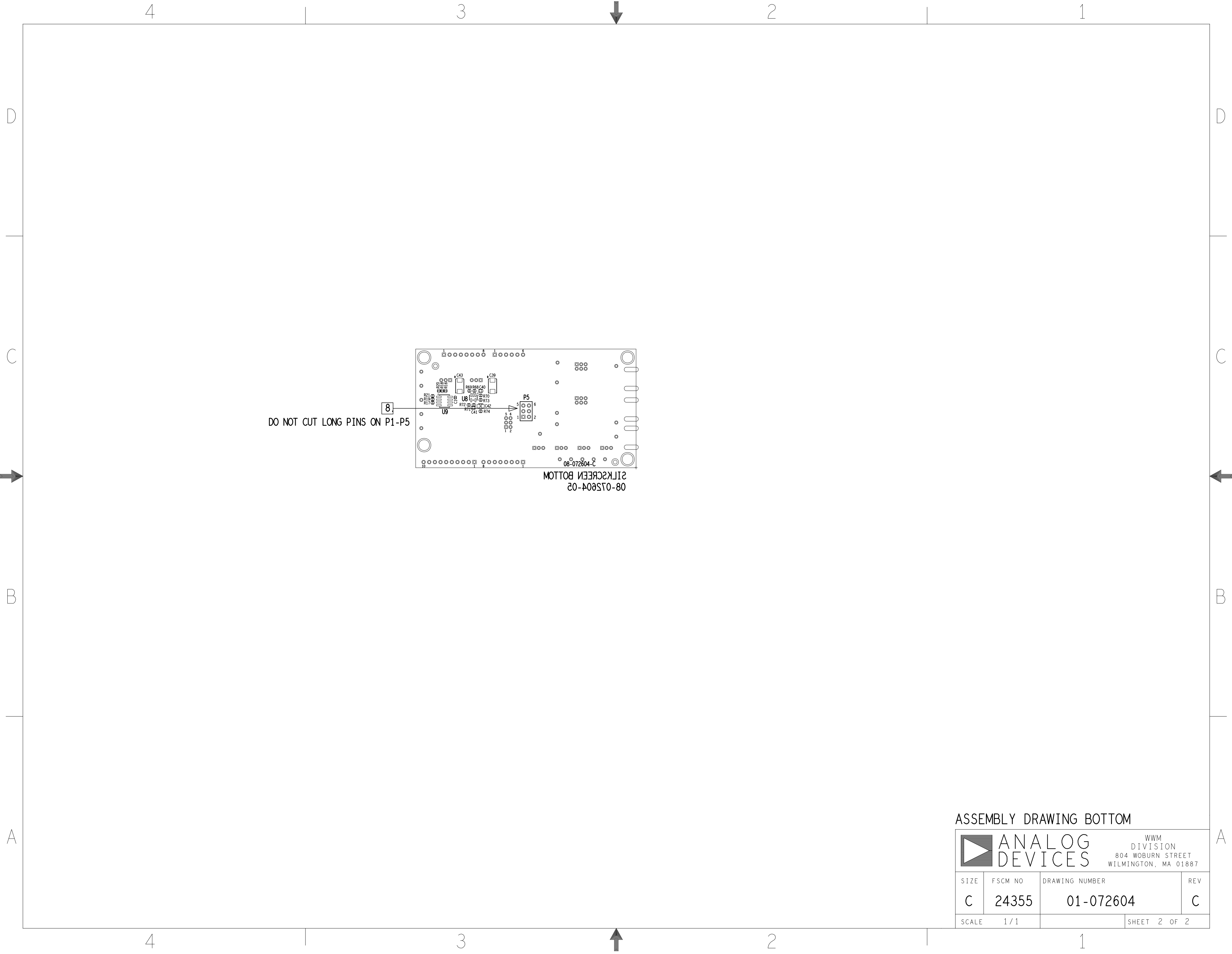
DATE: 07-21-23

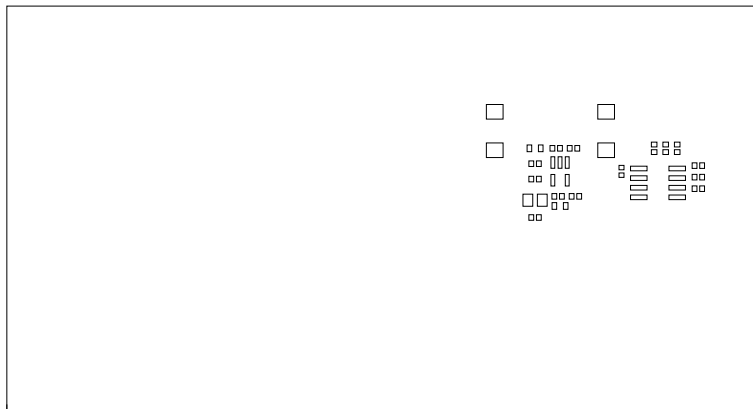
08-072604-05

EVAL-AD4052/51/50-ARDZ

REV C

LOW POWER, 16/14/12-BIT EASY DRIVE SAR ADC





PASTEMASK BOTTOM

DATE: 07-21-23

08-072604-14

EVAL-AD4052/51/50-ARDZ

REV C

LOW POWER, 16/14/12-BIT EASY DRIVE SAR ADC

