


DS91F21AQ+	
Part Number: 89-9121A+Q00	
Property of  maxim integrated™	Rev 2
Drill and Mechanical Layer	
Date: APR 27 2016	Units in mils

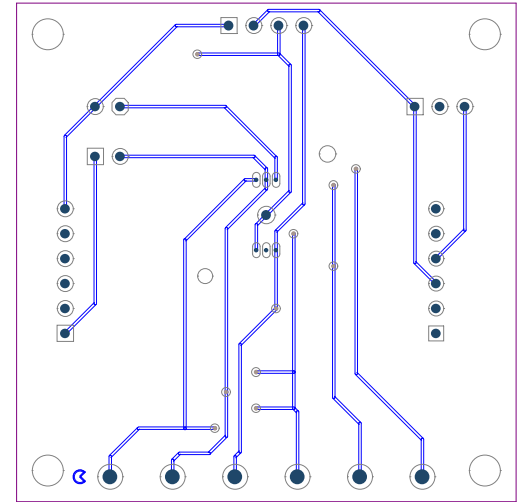
SIZE	QTY	SYM	PLATED	TOLERANCE
18	16	•	YES	+/- 0.003
39	24		YES	+/- 0.003
59	6		YES	+/- 0.003
59	1		NO	+/- 0.003
66	1		NO	+/- 0.003
125	4		NO	+/- 0.003

1. Fabricate using provided gerber files per latest revision Of IPC-A-600 unless otherwise noted.
2. Material: RoHS Compliant FR-408 or similar laminate material
3. Board Dimensions: (2000 x 2000 mils)
4. Board Thickness: 62 mils +/- 10%
5. Layers: 2 (Top, Bottom)
6. Minimum Trace/Spacing: 10mil / 7mil
7. Copper Thickness: 1oz on all layers
8. Surface mount pads:28 Through Hole Pads:46 Nonplated through holes:6
9. Soldermask: GREEN
10. Legend: White. Double-Sided. Non-Conductive Epoxy ink or Equiv.
11. Plating: Must be Lead free and RoHS Compliant
12. Finish: Most Economical Lead free and RoHS compliant process
13. Vendor Logo & date code: Allowed on bottom side only
14. Through holes: quantity 53, Slot holes 0, minimum size 18 mil
15. Tolerances:

Plated-through holes	+/- 3 mil
Pattern to pattern	+/- 6 mil
Legend to legend	no preference
Soldermask to pattern	+/- 6 mil
16. Electrical testing needed: YES

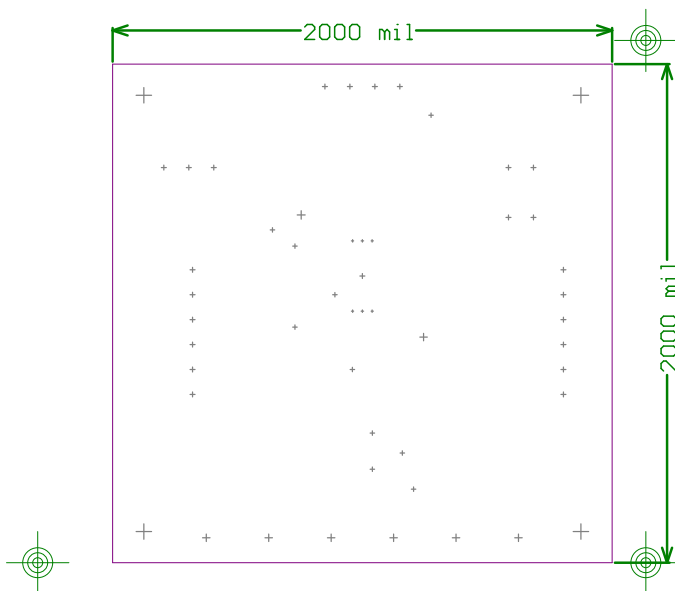
TOP METAL


62mil PCB



Bottom Metal

Bottom Metal



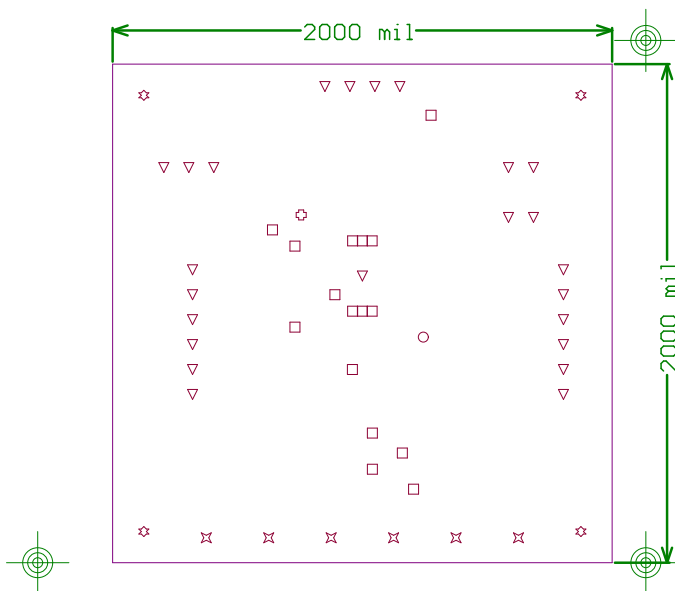
DS9121AQ+	
Part Number: 89-9121A+Q00	
Property of	Rev
 maxim integrated™	2
Drill and Mechanical Layer	
Date:APR 27 2016 Units in mils	


SIZE	QTY	SYM	PLATED	TOLERANCE
18	16	+	YES	+/- 0.003
39	24	+	YES	+/- 0.003
59	6	+	YES	+/- 0.003
59	1	+	NO	+/- 0.003
66	1	+	NO	+/- 0.003
125	4	+	NO	+/- 0.003

Notes:

1. Fabricate using provided gerber files per latest revision Of IPC-A-600 unless otherwise noted.
2. Material: RoHS Compliant FR-408 or similar laminate material
3. Board Dimensions: (2000 x 2000 mils)
4. Board Thickness: 62 mils +/- 10%
5. Layers: 2 (Top, Bottom)
6. Minimum Trace/Spacing: 10mil / 7mil
7. Copper Thickness: 1oz on all layers
8. Surface mount pads:28 Through Hole Pads:46 Nonplated through holes:6
9. Soldermask: GREEN
10. Legend: White. Double-Sided. Non-Conductive Epoxy ink or Equiv.
11. Plating: Must be Lead free and RoHS Compliant
12. Finish: Most Economical Lead free and RoHS compliant process
13. Vendor Logo & date code: Allowed on bottom side only
14. Through holes: quantity 53, Slot holes 0, minimum size 18 mil
15. Tolerances:
 - Plated-through holes +/- 3 mil
 - Pattern to pattern +/- 6 mil
 - Legend to legend no preference
 - Soldermask to pattern +/- 6 mil
16. Electrical testing needed: YES

62mil PCB



DS9121AQ+	
Part Number: 89-9121A+Q00	
Property of	Rev
 maxim integrated™	2
Drill and Mechanical Layer	
Date: APR 27 2016 Units in mils	

SIZE	QTY	SYM	PLATED	TOLERANCE
18	16	□	YES	+/- 0.003
39	24	▽	YES	+/- 0.003
59	6	✕	YES	+/- 0.003
59	1	○	NO	+/- 0.003
66	1	⊕	NO	+/- 0.003
125	4	☆	NO	+/- 0.003

Notes:

1. Fabricate using provided gerber files per latest revision Of IPC-A-600 unless otherwise noted.
2. Material: RoHS Compliant FR-408 or similar laminate material
3. Board Dimensions: (2000 x 2000 mils)
4. Board Thickness: 62 mils +/- 10%
5. Layers: 2 (Top, Bottom)
6. Minimum Trace/Spacing: 10mil / 7mil
7. Copper Thickness: 1oz on all layers
8. Surface mount pads: 28 Through Hole Pads: 46 Nonplated through holes: 6
9. Soldermask: GREEN
10. Legend: White. Double-Sided. Non-Conductive Epoxy ink or Equiv.
11. Plating: Must be Lead free and RoHS Compliant
12. Finish: Most Economical Lead free and RoHS compliant process
13. Vendor Logo & date code: Allowed on bottom side only
14. Through holes: quantity 53, Slot holes 0, minimum size 18 mil
15. Tolerances:
 - Plated-through holes +/- 3 mil
 - Pattern to pattern +/- 6 mil
 - Legend to legend no preference
 - Soldermask to pattern +/- 6 mil
16. Electrical testing needed: YES

62mil PCB