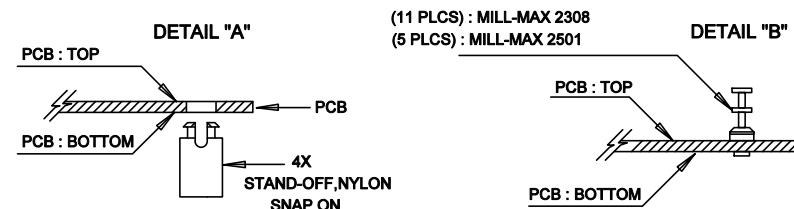
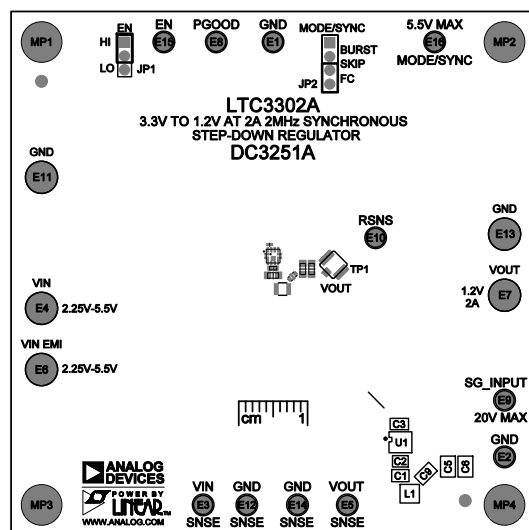




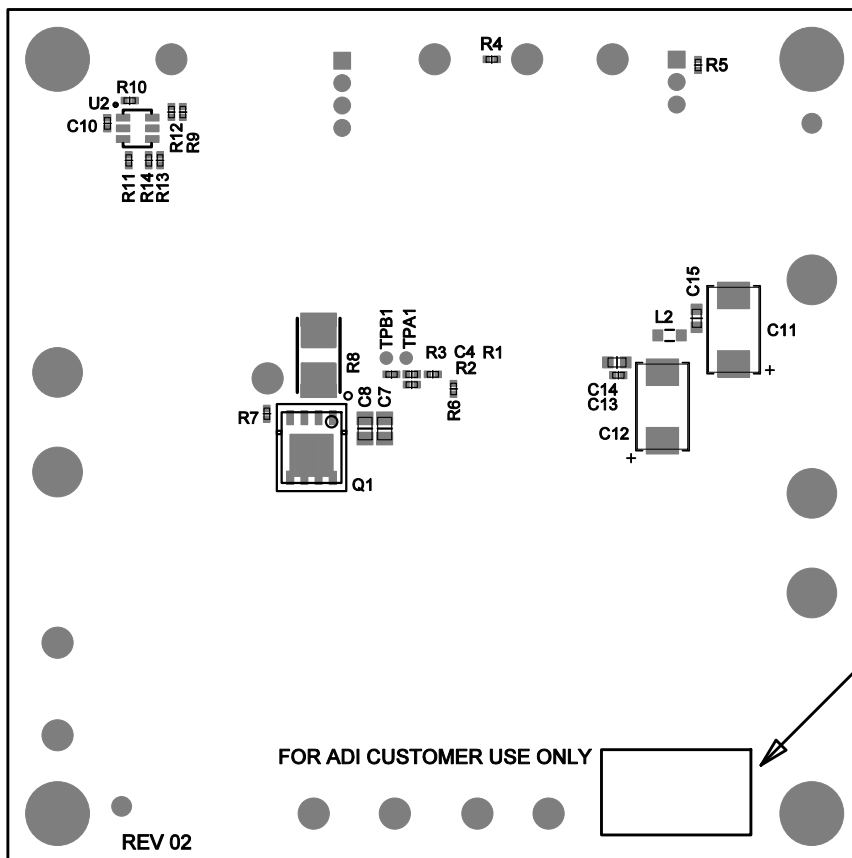
REVISION HISTORY				
ECO	REV	DESCRIPTION	APP. ENG.	DATE
-	02	PRODUCTION	MM	07-22-22



NOTES: UNLESS OTHERWISE SPECIFIED

1. WORKMANSHIP SHALL BE IN ACCORDANCE WITH IPC-A-610.
2. ASSEMBLY REFLOW PROFILE SHALL BE IN ACCORDANCE WITH J-STD-020 WITH MAXIMUM SOLDER TEMPERATURE OF 250 DEGREES CELSIUS.
3. PARTS TO OMIT WILL BE SPECIFIED ON THE BILL OF MATERIALS
LOCATIONS OF OMITTED PARTS SHALL BE FREE OF SOLDER.
MASK THE SOLDER STENCIL WHERE SMT PARTS ARE OMITTED.
4. INSTALL SHUNTS AS SHOWN ON ASSY DRAWING.
5. DEPANELIZE BOARDS AFTER ASSEMBLY AND ROUT-OUT THE BREAKOUT TABS ON FOUR SIDES OF THE BOARD EDGE.
6. APPLY ASSEMBLY STAMP OR QA STAMP TO BOTTOM OF BOARD (UNSHOWY AREA).
7. INSTALL TURRETS, STAND-OFFS AS SHOWN BELOW:
8. APPLY DEMO S/N AT AREA ON BOTTOM SIDE AS SHOWN ON SHEET 2.



APPROVALS		 ANALOG DEVICES		 POWER BY LINEAR™	
PCB DES	NC	FOR ADI CUSTOMER USE ONLY			
APP ENG	MM	TITLE: TOP ASSEMBLY DRAWING			
		3.3V TO 1.2V AT 2A 2MHz SYNCHRONOUS			
		STEP-DOWN REGULATOR			
		SIZE	IC NO. LTC3302A		REV.
		N/A	DC3251A		02
SCALE = NONE					SHT 1 OF 1



APPROVALS		  FOR ADI CUSTOMER USE ONLY	
PCB DES.	NC	TITLE: BOTTOM ASSEMBLY DRAWING 3.3V TO 1.2V AT 2A 2MHz SYNCHRONOUS STEP-DOWN REGULATOR	
APP ENG.	MM		
SCALE = NONE		SIZE N/A IC NO. LTC3302A DC3251A	REV 02
		SHT 2 of 2	