

LT8625SP-1

18V, 8A Synchronous Step-Down Silent Switcher with Low Noise Reference

DESCRIPTION

Demonstration circuit 3220A is a 18V, 8A synchronous step-down Silent Switcher® 3 with ultralow noise, high efficiency and power density featuring the [LT®8625SP-1](#). The input voltage range of DC3220A is 2.7V to 18V. The default demo board setting is 1V at 8A maximum DC output current. The LT8625SP-1 is a compact, ultralow noise, ultralow emission, high efficiency and high speed synchronous monolithic step-down switching regulator. The uniquely designed combination of the ultralow noise reference and the third-generation Silent Switcher architecture enables the LT8625SP-1 to achieve both high efficiency and excellent wideband noise performance. Minimum on-time of 15ns allows high V_{IN} to low V_{OUT} conversion at high frequencies.

The LT8625SP-1 switching frequency can be programmed either via oscillator resistor or external clock over a 300kHz to 4MHz range. The default frequency of demo circuit 3220A is 2MHz. The SYNC pin on the demo board is grounded by default for low ripple pulse skip mode operation. To synchronize to an external clock, move JP1 to SYNC and apply the external clock to the SYNC terminal. Forced continuous mode (FCM) can be

selected by moving JP1 shunt. Figure 1 shows the efficiency of the circuit at 5V input and 12V input in forced continuous mode operation (input from VIN terminal). Figure 2 shows the LT8625SP-1 temperature rising on DC3220A demo board under 6A and 8A load conditions.

The demo board has an EMI filter installed. The EMI performance of the board is shown on Figure 3. The red line in Radiated EMI Performance is the CISPR32 Class B limit. In addition to the excellent EMI performance, the regulator also features ultralow noise over a wide frequency range, as is shown on Figure 4.

The LT8625SP-1 data sheet gives a complete description of the part including operation and application information. The data sheet must be read in conjunction with this demo manual for demo circuit 3220A. The LT8625SP-1 is assembled in a 4mm × 4mm LQFN package with exposed pads and exposed die for low thermal resistance. The layout recommendations for low EMI operation and maximum thermal performance are available in the data sheet section Low EMI PCB Layout and Thermal Considerations.

Design files for this circuit board are available.

All registered trademarks and trademarks are the property of their respective owners.

PERFORMANCE SUMMARY Specifications are at $T_A = 25^\circ\text{C}$

PARAMETER	CONDITIONS	MIN	TYP	MAX	UNITS
Input Voltage Range V_{IN}		2.7		18	V
Output Voltage		0.992	1	1.008	V
Default Switching Frequency		1.93	2	2.07	MHz
Maximum Output Current	Derating is Necessary for Certain V_{IN} and Thermal Conditions	8			A
Efficiency	$V_{IN} = 12\text{V}$, $f_{SW} = 2\text{MHz}$, $V_{OUT} = 1\text{V}$ at $I_{OUT} = 8\text{A}$		77.2		%

PERFORMANCE SUMMARY

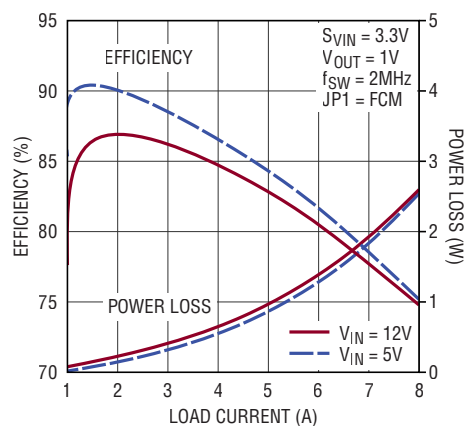


Figure 1. LT8625SP-1 Demo Circuit DC3220A Efficiency vs Load Current

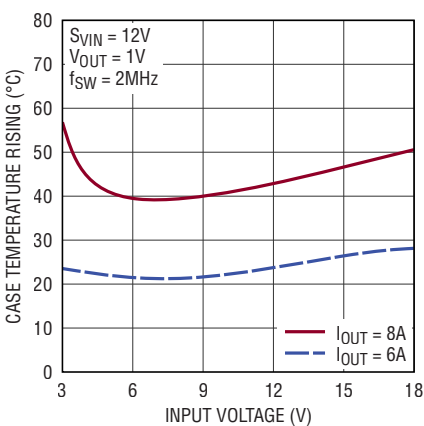


Figure 2. Temperature Rising vs V_{IN}

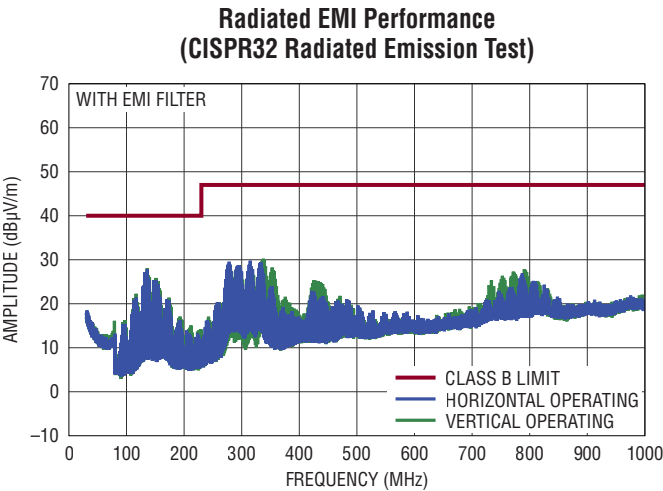


Figure 3. LT8625SP-1 Demo Circuit DC3220A EMI Performance (12V Input to 1V Output at 3A, $f_{SW} = 2MHz$)

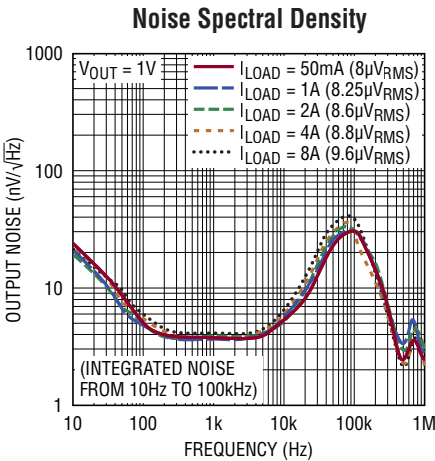


Figure 4. LT8625SP-1 Demo Circuit DC3220A Noise Spectral Density (12V Input to 1V Output, $f_{SW} = 2MHz$)

QUICK START PROCEDURE

Demonstration circuit 3220A is easy to set up to evaluate the performance of LT8625SP-1. Please refer to Figure 5 for proper equipment setup and follow the test procedures below:

NOTE: When measuring the input or output voltage ripple, care must be taken to avoid a long ground lead on the oscilloscope probe. Measure the output voltage ripple by touching the probe tip directly across the output capacitor. For input voltage ripple and the remote output voltage ripple, they can also be measured through the SMA connectors via VIN_SENSE and VO_SENSE. Figure 6 shows the output voltage ripple measured at the output capacitor C22 through VO_SENSE SMA connector.

1. Place JP1 on FCM position.
2. With power off, connect the input power supply to VIN (J1) and GND (J2).
3. With power off, connect the load from VOUT (J5) to GND (J6).

4. Connect the DMM between the input test points: VIN_SENSE (E1) and SENSE_GND (E2) to monitor the input voltage. Connect DMM between VO_SENSE (E4) and SENSE_GND (E7) to monitor the output voltage

5. Turn on the power supply at the input.

NOTE: Make sure that the input voltage does not exceed 18V.

6. Check for the proper output voltage ($V_{OUT} = 1V$).

NOTE: If there is no output, temporarily disconnect the load to make sure that the load is not set too high.

7. Once the input and output voltages are properly established, adjust the load current within the operating range of 0A to 8A max. Observe the output voltage regulation, output voltage ripples, switching node waveform, load transient response and other parameters.
8. An external clock can be added to the SYNC terminal when SYNC function is used (JP1 on the SYNC position). The R_T resistor (R4) should be chosen to set the LT8625SP-1 switching frequency at least 20% below the lowest SYNC frequency.

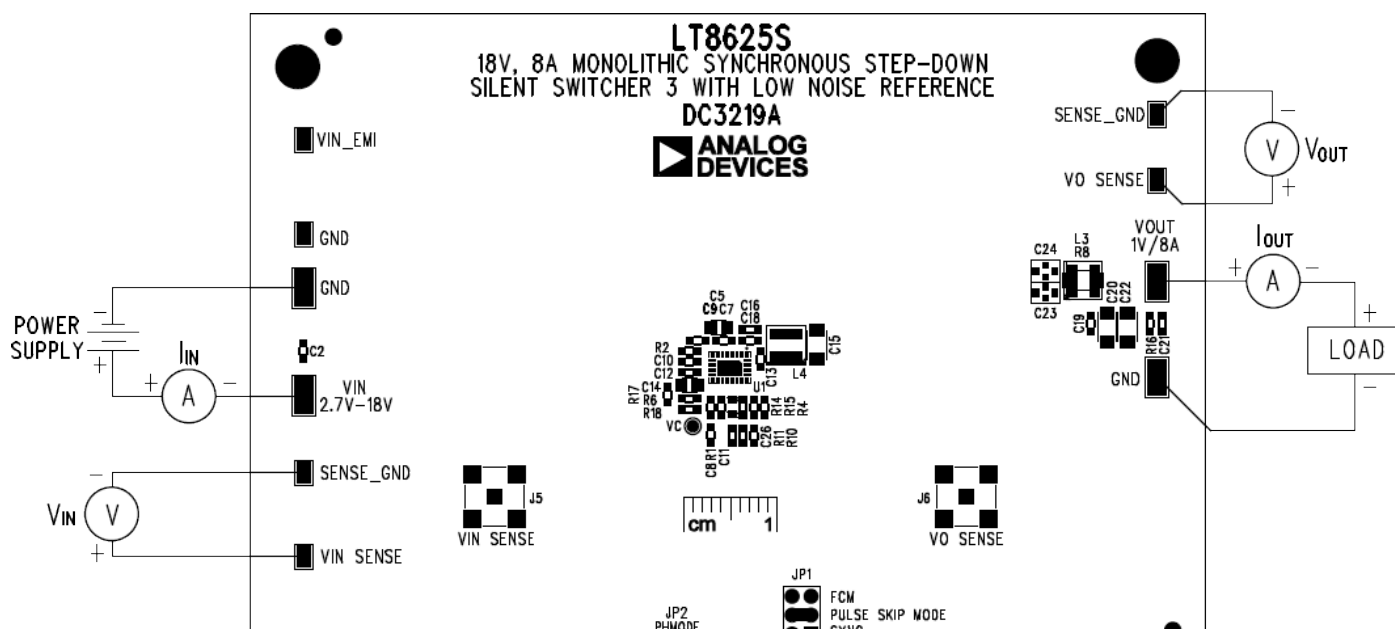


Figure 5. Proper Measurement Equipment Setup

TYPICAL PERFORMANCE CHARACTERISTICS

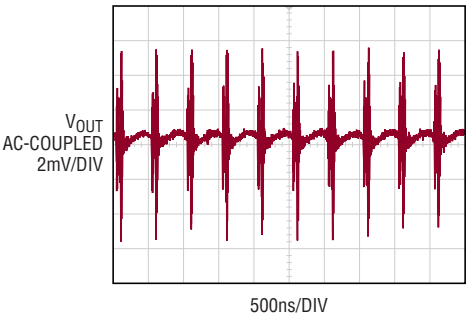


Figure 6. LT8625SP-1 Demo Circuit DC3220A Output Voltage Ripple Measured through J4 (12V Input, $I_{OUT} = 8A$, 200MHz BW)

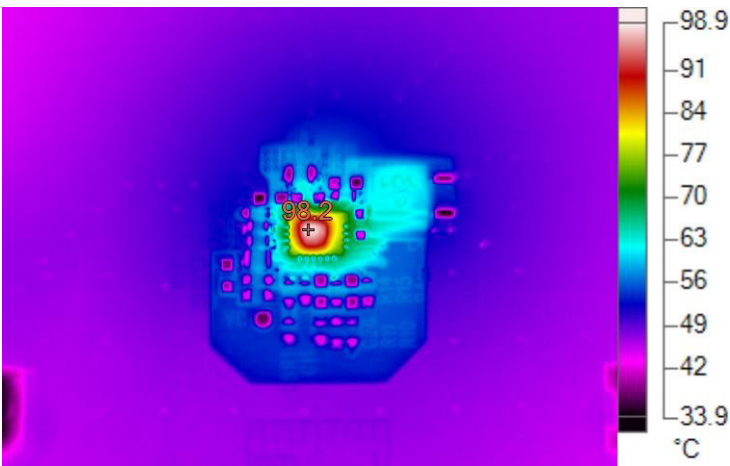


Figure 7. Thermal Performance at $V_{IN} = 12V$, $f_{SW} = 2MHz$, $V_{OUT} = 1V$, $I_{LOAD} = 8A$, $T_A = 25^{\circ}C$

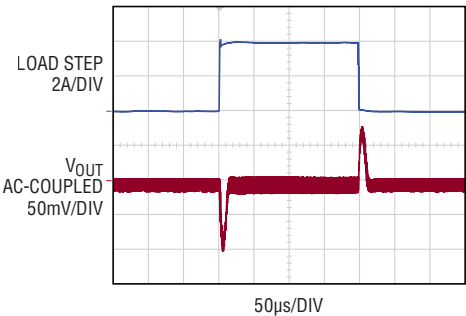


Figure 8. Transient Responses with Load Steps 0A to 4A to 0A at $dI/dt = 4A/\mu s$

PARTS LIST

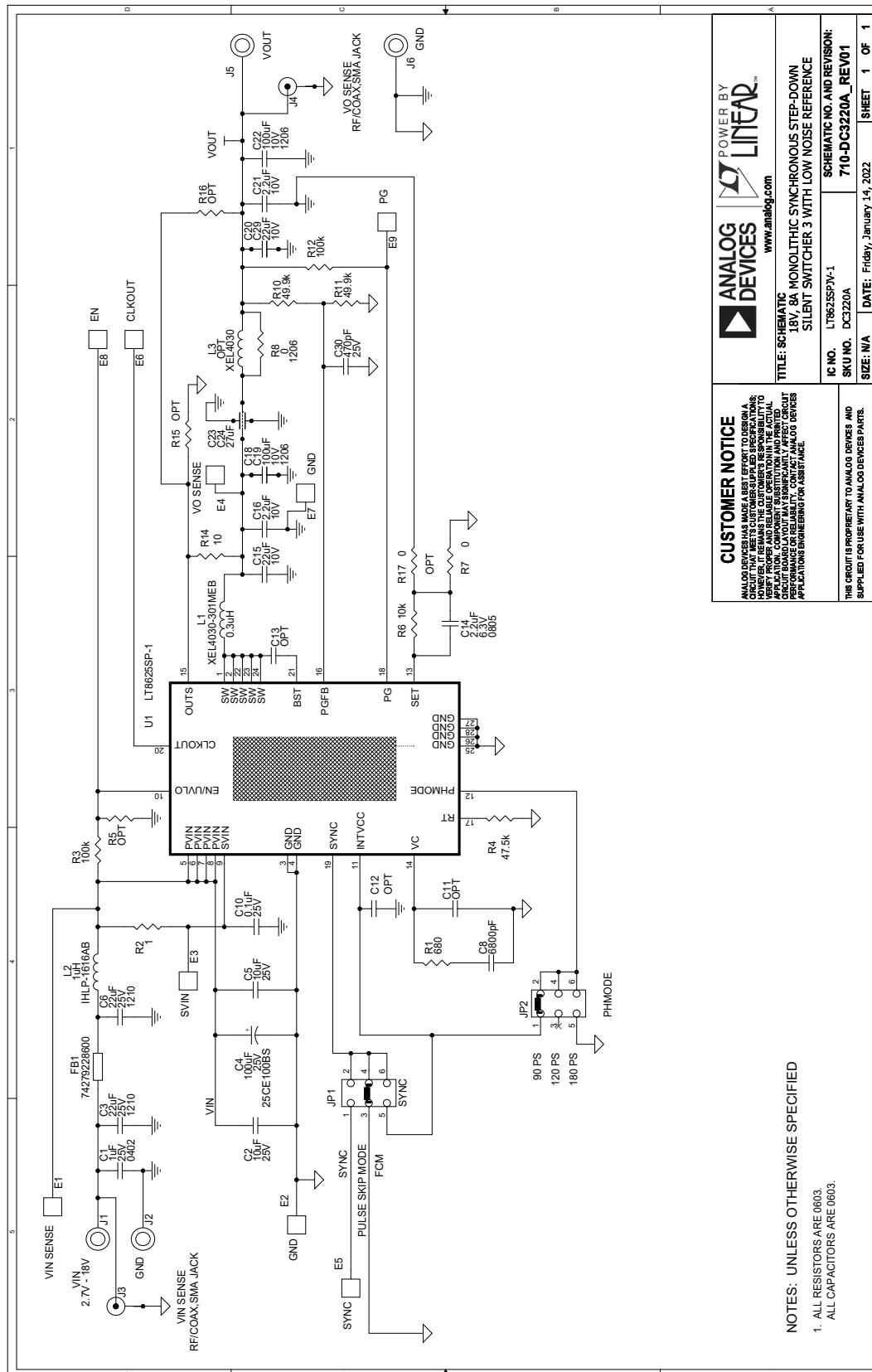
ITEM	QTY	REFERENCE	PART DESCRIPTION	MANUFACTURER/PART NUMBER
Required Circuit Components				
1	1	C1	CAP, 1 μ F, X5R, 25V, 10%, 0402, AEC-Q200	MURATA, GRT155R61E105KE01D
2	2	C2, C5	CAP, 10 μ F, X5R, 25V, 20%, 0603	MURATA, GRM188R61E106MA73D NIC, NMC0603X5R106M25TRPF SAMSUNG, CL10A106MA8NRNC TDK, C1608X5R1E106M080AC
3	2	C3, C6	CAP, 22 μ F, X7R, 25V, 10%, 1210	AVX, 12103C226KAT2A KEMET, C1210C226K3RACTU MURATA, GRM32ER71E226KE15L SAMSUNG, CL32B226KAJNNNE
4	1	C4	CAP, 100 μ F, ALUM ELECT, 25V, 20%, 6.3mm \times 7.7mm, CE-BS SERIES	SUN ELECTRONIC INDUSTRIES CORP, 25CE100BS
5	1	C8	CAP, 6800pF, X7R, 25V, 10%, 0603	YAGEO, CC0603KRX7R8BB682 AVX, 06033C682KAT2A MURATA, GRM188R71E682KA01D WURTH ELEKTRONIK, 885012206064
6	1	C10	CAP, 0.1 μ F, X7R, 25V, 10%, 0603, AEC-Q200	MURATA, GCM188R71E104KA57D TDK, CGA3E2X7R1E104K080AA
7	0	C11, C12, C13	CAP, OPTION, 0603	
8	1	C14	CAP, 2.2 μ F, X7R, 25V, 10%, 0805, AEC-Q200	TAIYO YUDEN, TMK212B7225KGHT
9	3	C15, C20, C29	CAP, 22 μ F, X5R, 10V, 20%, 0603	AVX, 0603ZD226MAT2A MURATA, GRM188R61A226ME15D SAMSUNG, CL10A226MP8NUNE
10	2	C16, C21	CAP, 2.2 μ F, X7R, 10V, 10%, 0603	MURATA, GRM188R71A225KE15D TDK, C1608X7R1A225K080AC AVX, 0603ZC225KAT2A YAGEO, CC0603KRX7R6BB225
11	3	C18, C19, C22	CAP, 100 μ F, X5R, 10V, 20%, 1206	TDK, C3216X5R1A107M160AC
12	2	C23, C24	CAP, 27 μ F, FEED THRU, 6.3V, 20%, 1206, 3-TERM, 5m Ω DCR, 6A	MURATA, NFM31PC276B0J3L
13	1	C30	CAP, 470pF, C0G, 25V, 10%, 0603	AVX, 06033A471KAT2A KEMET, C0603C471K3GACTU
14	9	E1, E2, E3, E4, E5, E6, E7, E8, E9	TEST POINT, 0805, 2mm \times 1.25mm \times 1.45mm, PROBE PAD, FOIL, VERT, SMT, NATURAL	TE CONNECTIVITY, 1625854-2 TE CONNECTIVITY, RCT-0C
15	1	FB1	IND., 60 Ω AT 100MHz, PWR, FERRITE BEAD, 25%, 5100mA, 15m Ω , 0603	WURTH ELEKTRONIK, 74279228600
16	4	J1, J2, J5, J6	CONN., BANANA JACK, FEMALE, THT, NON-INSULATED, SWAGE, 0.218"	KEYSTONE, 575-4
17	2	J3, J4	CONN., RF/COAX, SMA JACK, FEMALE, 1PORT, VERT, ST, SMT, 50 Ω , Au	MOLEX, 0732511350 MOLEX, 73251-1350 MOLEX, 732511350
18	2	JP1, JP2	CONN., HDR, MALE, 2 \times 3, 2mm, VERT, ST, THT	WURTH ELEKTRONIK, 62000621121
19	1	L1	IND., 0.3 μ H, PWR, SHIELDED, 20%, 18.9A, 3.1m Ω , 4.3mm \times 4.3mm, XEL4030, AEC-Q200	COILCRAFT, XEL4030-301MEB COILCRAFT, XEL4030-301MEC
20	1	L2	IND., 1 μ H, PWR, SHIELDED, 20%, 4A, 52.5m Ω , 1616AB, IHLP-01 SERIES	VISHAY, IHLP1616ABER1R0M01
21	0	L3	IND., 0.47 μ H, PWR, SHIELDED, 20%, 15.6A, 4.6m Ω , 4.3mm \times 4.3mm, XEL4030, AEC-Q200	COILCRAFT, XEL4030-471MEB COILCRAFT, XEL4030-471MEC
22	1	LB1	LABEL SPEC, DEMO BOARD SERIAL NUMBER	BRADY, THT-96-717-10
23	4	MP1, MP2, MP3, MP4	STANDOFF, NYLON, SNAP-ON, 0.375"	KEYSTONE, 8832

DEMO MANUAL DC3220A

PARTS LIST

ITEM	QTY	REFERENCE	PART DESCRIPTION	MANUFACTURER/PART NUMBER
24	1	PCB1	PCB, DC3220A	ADI APPROVED SUPPLIER, 600-DC3220A
25	1	R1	RES., 680 Ω , 1%, 1/10W, 0603, AEC-Q200	PANASONIC, ERJ3EKF6800V VISHAY, CRCW0603680RFKEA
26	1	R2	RES., 1 Ω , 1%, 1/10W, 0603, AEC-Q200	NIC, NRC06F1R00TRF VISHAY, CRCW06031R00FKEA
27	2	R3, R12	RES., 100k, 1%, 1/10W, 0603, AEC-Q200	VISHAY, CRCW0603100KFKEA NIC, NRC06F1003TRF PANASONIC, ERJ3EKF1003V VISHAY, RCA0603100KFKEAHP
28	1	R4	RES., 47.5k, 1%, 1/10W, 0603	VISHAY, CRCW060347K5FKEA YAGEO, RC0603FR-0747K5L
29	0	R5, R15, R16	RES., OPTION, 0603	
30	1	R6	RES., 10k, 1%, 1/10W, 0603, AEC-Q200	VISHAY, CRCW060310K0FKEA KOA SPEER, RK73H1JTTD1002F PANASONIC, ERJ3EKF1002V
31	2	R7, R14	RES., 0 Ω , 1/10W, 0603, AEC-Q200	VISHAY, CRCW06030000Z0EA VISHAY, CRCW06030000Z0EB NIC, NRC06Z0TRF
32	1	R8	RES., 0 Ω , 1/4W, 1206, AEC-Q200	VISHAY, CRCW12060000Z0EA PANASONIC, ERJ8GEY0R00V NIC, NRC12Z0TRF
33	2	R10, R11	RES., 49.9k, 1%, 1/10W, 0603	NIC, NRC06F4992TRF VISHAY, CRCW060349K9FKEA YAGEO, RC0603FR-0749K9L
34	1	STNCL1	TOOL, STENCIL, DC3220A	ADI APPROVED SUPPLIER, 830-DC3220A
35	1	U1	IC, STEP-DOWN SILENT SWITCHER 3, LQFN-24	ANALOG DEVICES, LT8625SP-1#PBF ANALOG DEVICES, LT8625SP-1#TRPBF
36	2	XJP1, XJP2	CONN., SHUNT, FEMALE, 2-POS, 2mm	WURTH ELEKTRONIK, 60800213421

SCHEMATIC DIAGRAM



CUSTOMER NOTICE

ANALOG DEVICES HAS MADE A BEST EFFORT TO DESIGN A BOARD THAT MEETS THE REQUIREMENTS OF THE CUSTOMER. HOWEVER, IT REMAINS THE CUSTOMER'S RESPONSIBILITY TO VERIFY PROPER AND RELIABLE OPERATION IN THE ACTUAL APPLICATION. THE CUSTOMER SHALL BE RESPONSIBLE FOR THE CIRCUIT BOARD LAYOUT AND ANY SIGNIFICANT AFFECT CIRCUIT BOARD LAYOUT MAY SIGNIFICANTLY AFFECT CIRCUIT PERFORMANCE. ANALOG DEVICES MAKES NO WARRANTY FOR APPLICATIONS ENGINEERING OR ASSISTANCE.

THIS CIRCUIT IS PROPRIETARY TO ANALOG DEVICES AND SUPPLIED FOR USE WITH ANALOG DEVICES PARTS.

TITLE: SCHEMATIC 18V, 8A MONOLITHIC SYNCHRONOUS STEP-DOWN SILENT SWITCHER 3 WITH LOW NOISE REFERENCE		IC NO. LT8625SPV-1 SKU NO. DC3220A	
SCHEMATIC NO. AND REVISION: 710-DC3220A_REV01		DATE: Friday, January 14, 2022	
SIZE: N/A		SHEET 1 OF 1	

NOTES: UNLESS OTHERWISE SPECIFIED

1. ALL RESISTORS ARE 0603.

ALL CAPACITORS ARE 0603.

REVISION HISTORY

REV	DATE	DESCRIPTION	PAGE NUMBER
A	4/24	Initial release	—

**ESD Caution**

ESD (electrostatic discharge) sensitive device. Charged devices and circuit boards can discharge without detection. Although this product features patented or proprietary protection circuitry, damage may occur on devices subjected to high energy ESD. Therefore, proper ESD precautions should be taken to avoid performance degradation or loss of functionality.

Legal Terms and Conditions

By using the evaluation board discussed herein (together with any tools, components documentation or support materials, the "Evaluation Board"), you are agreeing to be bound by the terms and conditions set forth below ("Agreement") unless you have purchased the Evaluation Board, in which case the Analog Devices Standard Terms and Conditions of Sale shall govern. Do not use the Evaluation Board until you have read and agreed to the Agreement. Your use of the Evaluation Board shall signify your acceptance of the Agreement. This Agreement is made by and between you ("Customer") and Analog Devices, Inc. ("ADI"), with its principal place of business at One Technology Way, Norwood, MA 02062, USA. Subject to the terms and conditions of the Agreement, ADI hereby grants to Customer a free, limited, personal, temporary, non-exclusive, non-sublicensable, non-transferable license to use the Evaluation Board FOR EVALUATION PURPOSES ONLY. Customer understands and agrees that the Evaluation Board is provided for the sole and exclusive purpose referenced above, and agrees not to use the Evaluation Board for any other purpose. Furthermore, the license granted is expressly made subject to the following additional limitations: Customer shall not (i) rent, lease, display, sell, transfer, assign, sublicense, or distribute the Evaluation Board; and (ii) permit any Third Party to access the Evaluation Board. As used herein, the term "Third Party" includes any entity other than ADI, Customer, their employees, affiliates and in-house consultants. The Evaluation Board is NOT sold to Customer; all rights not expressly granted herein, including ownership of the Evaluation Board, are reserved by ADI. **CONFIDENTIALITY.** This Agreement and the Evaluation Board shall all be considered the confidential and proprietary information of ADI. Customer may not disclose or transfer any portion of the Evaluation Board to any other party for any reason. Upon discontinuation of use of the Evaluation Board or termination of this Agreement, Customer agrees to promptly return the Evaluation Board to ADI. **ADDITIONAL RESTRICTIONS.** Customer may not disassemble, decompile or reverse engineer chips on the Evaluation Board. Customer shall inform ADI of any occurred damages or any modifications or alterations it makes to the Evaluation Board, including but not limited to soldering or any other activity that affects the material content of the Evaluation Board. Modifications to the Evaluation Board must comply with applicable law, including but not limited to the RoHS Directive. **TERMINATION.** ADI may terminate this Agreement at any time upon giving written notice to Customer. Customer agrees to return to ADI the Evaluation Board at that time. **LIMITATION OF LIABILITY.** THE EVALUATION BOARD PROVIDED HEREUNDER IS PROVIDED "AS IS" AND ADI MAKES NO WARRANTIES OR REPRESENTATIONS OF ANY KIND WITH RESPECT TO IT. ADI SPECIFICALLY DISCLAIMS ANY REPRESENTATIONS, ENDORSEMENTS, GUARANTEES, OR WARRANTIES, EXPRESS OR IMPLIED, RELATED TO THE EVALUATION BOARD INCLUDING, BUT NOT LIMITED TO, THE IMPLIED WARRANTY OF MERCHANTABILITY, TITLE, FITNESS FOR A PARTICULAR PURPOSE OR NON-INFRINGEMENT OF INTELLECTUAL PROPERTY RIGHTS. IN NO EVENT WILL ADI AND ITS LICENSORS BE LIABLE FOR ANY INCIDENTAL, SPECIAL, INDIRECT, OR CONSEQUENTIAL DAMAGES RESULTING FROM CUSTOMER'S POSSESSION OR USE OF THE EVALUATION BOARD, INCLUDING BUT NOT LIMITED TO LOST PROFITS, DELAY COSTS, LABOR COSTS OR LOSS OF GOODWILL. ADI'S TOTAL LIABILITY FROM ANY AND ALL CAUSES SHALL BE LIMITED TO THE AMOUNT OF ONE HUNDRED US DOLLARS (\$100.00). **EXPORT.** Customer agrees that it will not directly or indirectly export the Evaluation Board to another country, and that it will comply with all applicable United States federal laws and regulations relating to exports. **GOVERNING LAW.** This Agreement shall be governed by and construed in accordance with the substantive laws of the Commonwealth of Massachusetts (excluding conflict of law rules). Any legal action regarding this Agreement will be heard in the state or federal courts having jurisdiction in Suffolk County, Massachusetts, and Customer hereby submits to the personal jurisdiction and venue of such courts. The United Nations Convention on Contracts for the International Sale of Goods shall not apply to this Agreement and is expressly disclaimed.