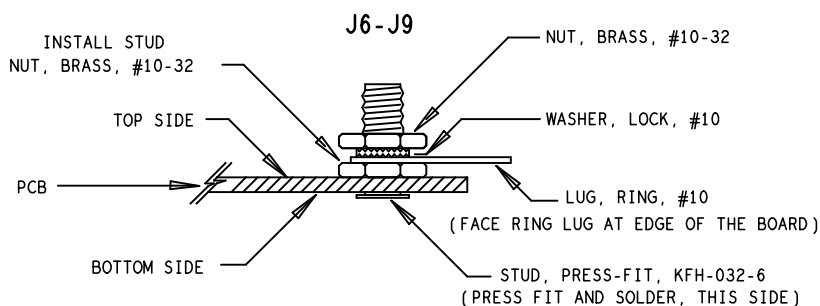
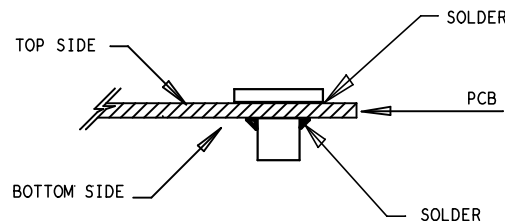


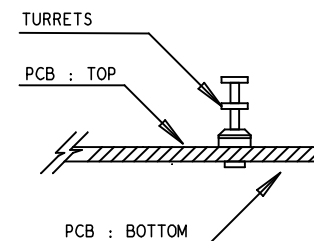
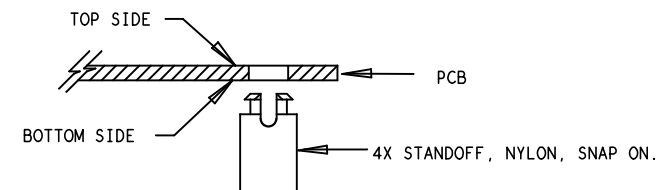
**IMPORTANT: MARK EACH VERISON PER BOM
IN THE SQUARES ABOVE AND MARK U1 PER BOM**





BANANA JACK : KEYSTONE 575-4



1. WORKMANSHIP SHALL BE IN ACCORDANCE WITH IPC-A-610.
MAXIMUM SOLDER TEMPERATURE IS 240 DEG C.
2. ASSEMBLY PROCESS SHALL INCLUDE: REFLOW SOLDER TOP SIDE SMD.
3. PARTS TO OMIT WILL BE SPECIFIED ON THE BILL OF MATERIALS.
LOCATIONS OF OMITTED PARTS SHALL BE FREE OF SOLDER.
MASK THE SOLDER STENCIL WHERE SMT PARTS ARE OMITTED.
4. INSTALL SHUNTS AS SHOWN ON ASSY DRAWING.
5. DEPANELIZE BOARDS AFTER ASSEMBLY AND ROUTE-OUT THE
BREAKOUT TABS ON FOUR SIDES OF THE BOARD EDGE.
6. DO NOT APPLY ANY KIND OF ASSEMBLY STAMP OR QA STAMP
TO ANY BOARD.
7. INSTALL 4 STANDOFFS AT 4 LOCATIONS AS SHOWN BELOW:



 ANALOG DEVICES www.analog.com		 POWER BY LINEAR FOR ADI CUSTOMER USE ONLY	
TITLE: TOP ASSEMBLY DRAWING			
54 V INPUT, HIGH CURRENT DC/DC POWER MODULE WITH PMBUS INTERFACE			
SIZE N/A	IC NO. LTP88xx DC3190A	REV. 5	SHT 1 OF 2