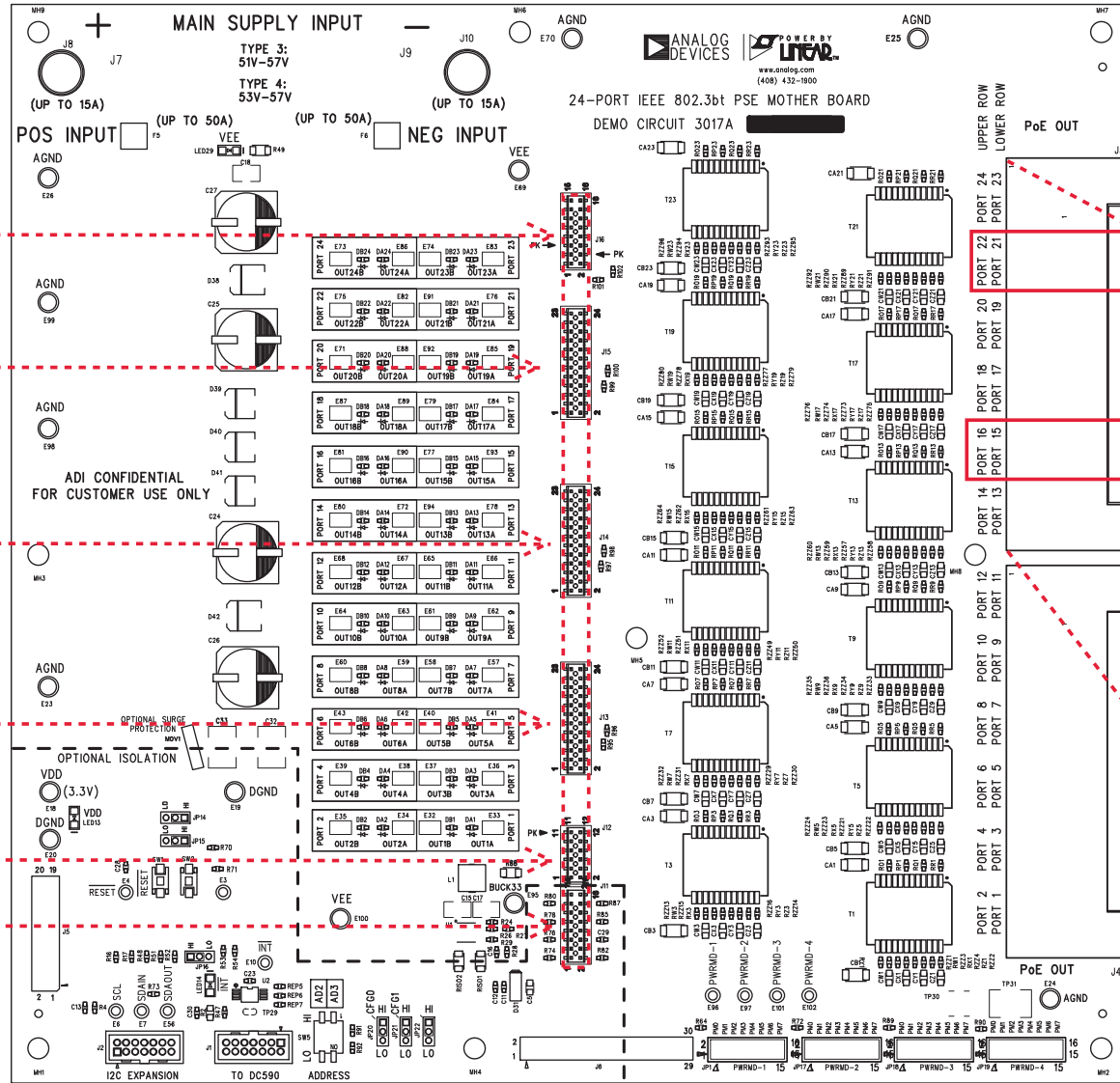
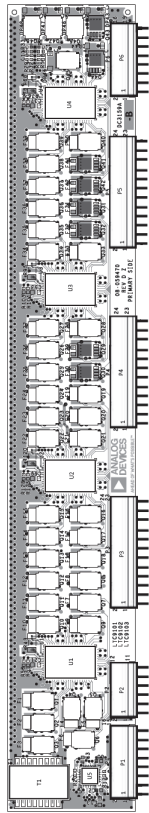


PCA1:DC3017A-A

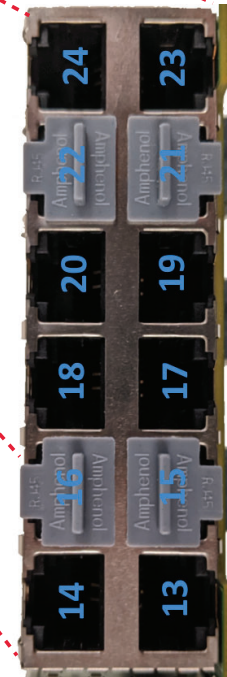
REVISION HISTORY			
ECO	REV	DESCRIPTION	APP. ENG. DATE
-	1		ERIC H 07-02-21

PCA3:DC3159A-B



NOTES: UNLESS OTHERWISE SPECIFIED

1. WORKMANSHIP SHALL BE IN ACCORDANCE WITH IPC-A-610.
2. PCA1 (DC3017A-A Motherboard) and PCA2 (DC3159A-B daughtercard) should be in separate bags when shipped
3. Install RJ45 dust caps CAP16, CAP17, CAP20, and CAP21 into J3 as shown below



APPROVALS		ANALOG DEVICES		POWER BY LINEAR	
PCB DES.	KEN MUI			(408) 432-1900	
APP ENG.	ERIC H	TITLE: TOP ASSEMBLY DRAWING			
		SIZE		REV.	
		N/A		1	
SCALE = NONE		FILENAME:		SHT 1 OF 2	