

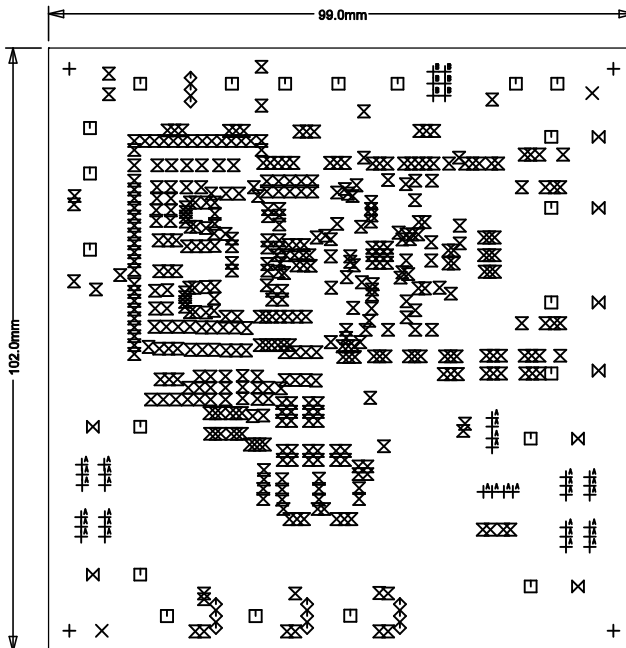
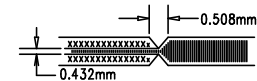
REVISION HISTORY				
ECO	REV	DESCRIPTION	APP. ENG.	DATE
-	2	PRODUCTION	LJ	11-18-20

LAYER STRUCTURE (INCHES)

6 LAYERS	.0028	LAYER 1- TOP
	.004	PREPREG
	.0028	LAYER 2- GND PLANE
	.014	CORE MATERIAL
	.062 +/-5%	LAYER 3- SIGNALS
	.016	CORE MATERIAL
	.0028	LAYER 4- SIGNALS
	.014	CORE MATERIAL
	.0028	LAYER 5- GND PLANE
	.004	PREPREG
	.0028	LAYER 6- BOTTOM

NOTES: UNLESS OTHERWISE SPECIFIED

- FAB PER IPC-A-600.
- MATERIAL: -LEAD FREE ASSEMBLY COMPLIANT, ISOLA FR-370HR OR EQUIVALENT.
-FINISHED THICKNESS TO BE 1.6 +/- 0.1mm
-TOTAL OF 6 LAYERS WITH 2 OZ. CU ON ALL LAYERS.
-FLAMMABILITY RATING: 94 V-0 MINIMUM.
- SIZE: CUT TO DIMENSIONS AND TOLERANCES SHOWN.
0.00 ARE PRIMARY DATUMS.
- DRILLING: -DRILL HOLES PER SCHEDULE. PLATE THROUGH HOLES WITH COPPER, 0.025mm THICK MIN.
-ALL HOLE SIZES ARE SPECIFIED AFTER PLATING.
-HOLE LOCATION TOLERANCES ARE +/-0.075mm IN RELATION TO CENTER
- FINISH: -SMOBC USING LPI BOTH SIDES, COLOR GREEN.
-GOLD IMMERSION BOTH SIDES.
-FOR SILKSCREENS: USE WHITE NON-CONDUCTIVE INK.
- DO NOT ALTER ARTWORK e.g. TO ADD LOGO OR DATE CODE.
- PCBS ARE TO BE RoHS COMPLIANT.
- SCORING FOR PANELIZED PCB (PRODUCTION FAB ONLY):



COMPONENT SIDE SHOWN

SIZE	QTY	SYM	PLATED	TOL
4.75	4	+	NO	+/-0.008
1.78	2	X	NO	+/-0.008
2.4	21	□	YES	+/-0.008
0.76	12	◇	YES	+/-0.008
0.25	473	⊗	YES	+/-0.008
5.21	8	⊗	YES	+/-0.008
0.51	32	+ ^A	YES	+/-0.008
0.9	6	+ ^B	YES	+/-0.008

UNLESS OTHERWISE SPECIFIED DIMENSIONS ARE IN METRIC TOLERANCES: 0.XX = ± 0.25mm 0.XXX = ± 0.125mm INTERPRET DIM AND TOL PER ASME Y14.5M-1994 THIRD ANGLE PROJECTION		APPROVALS		ANALOG DEVICES		POWER BY LITTEL		www.Analog.com FOR ADI CUSTOMER USE ONLY	
PCB DES.		LT		TITLE: FABRICATION DRAWING		LOW IQ HIGH FREQUENCY STEP-UP		AND DUAL SYNCHRONOUS STEP-DOWN SUPPLIES	
APP ENG.		LJ		SIZE		IC NO.		REV	
				N/A		LTC781EUJ		2	
						DC3151A			
SCALE = NONE		FILENAME: DC3151A-2.PCB						SHT 1 OF 1	

