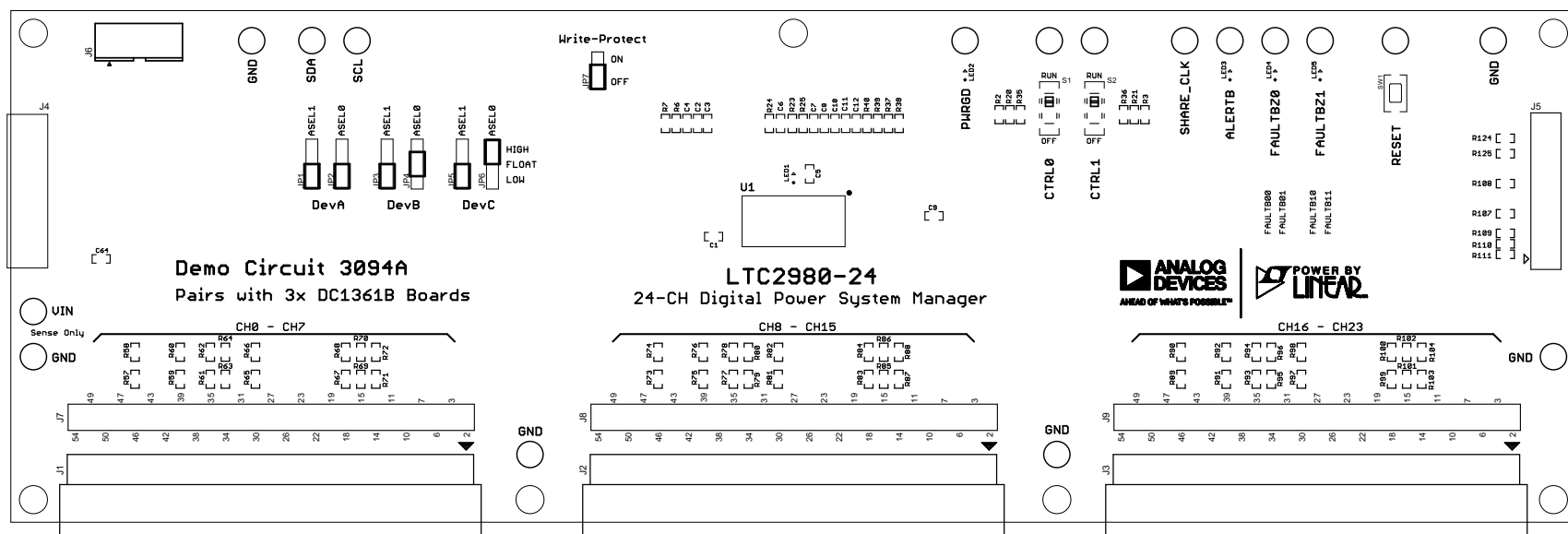
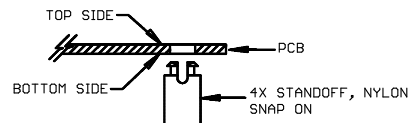


REVISION HISTORY				
ECO	REV	DESCRIPTION	APPROVED	DATE
-	1	PRODUCTION	MIKE P.	07/15/2020

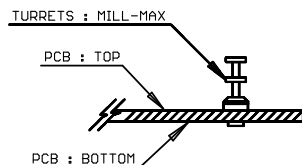
NOTES: UNLESS OTHERWISE SPECIFIED

- WORKMANSHIP SHALL BE IN ACCORDANCE WITH IPC-A-610.
- PARTS TO OMIT WILL BE SPECIFIED ON THE BILL OF MATERIALS. MASK THE SOLDER STENCIL WHERE SMT PARTS ARE OMITTED.
- DEPANELIZE BOARDS AFTER ASSEMBLY AND ROUTE-OUT THE BREAKOUT TABS ON 4 SIDES OF THE BOARD EDGE.
- ASSY PROCESS SHALL INCLUDE: REFLOW SOLDER TOP SIDE SMD.
- DO NOT APPLY ANY KIND OF ASSEMBLY STAMP OR QA STAMP ON ANY BOARD.

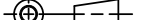


- INSTALL 7 STANDOFFS FROM THE BOTTOM SIDE.



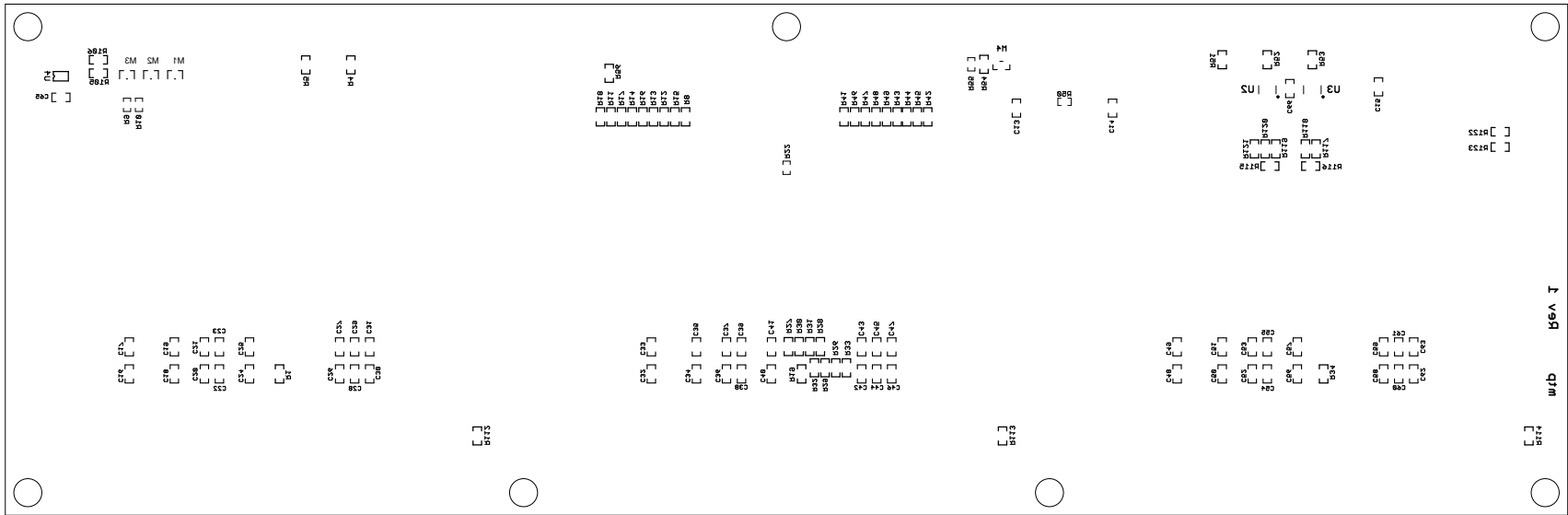
- INSTALL TURRETS and LEDs AS SHOWN BELOW:



- INSTALL 7 SHUNTS AS SHOWN WITH THIS SYMBOL

<div>UNLESS OTHERWISE SPECIFIED DIMENSIONS ARE IN INCHES TOLERANCES ON ANGLE +/- 1° 0.001" = +/- 0.01" 0.0005" = +/- 0.005" INTERPRET DIM AND TOL PER ASME Y14.5-1994</div> <div>THIRD ANGLE PROJECTION</div> <div></div> <div>DO NOT SCALE DRAWING</div>	<div>APPROVALS</div> <table><thead><tr><th></th><th>NAME</th><th>DATE</th></tr></thead><tbody><tr><td>PCB DES.</td><td>MIKE P.</td><td>7-15-20</td></tr><tr><td>APP ENG</td><td>MIKE P.</td><td>7-15-20</td></tr><tr><td></td><td></td><td></td></tr><tr><td></td><td></td><td></td></tr><tr><td></td><td></td><td></td></tr><tr><td></td><td></td><td></td></tr><tr><td></td><td></td><td></td></tr><tr><td></td><td></td><td></td></tr><tr><td></td><td></td><td></td></tr></tbody></table>				NAME	DATE	PCB DES.	MIKE P.	7-15-20	APP ENG	MIKE P.	7-15-20																						<div><div>ANALOG DEVICES</div><div>AHEAD OF WHAT'S POSSIBLE™</div></div>	<div><div>POWER BY LINEAR</div></div> <div>1630 MCCARTHY BLVD. MILPITAS, CA 95035 PH: (408) 432-1980 www.analog.com</div>
		NAME	DATE																																
	PCB DES.	MIKE P.	7-15-20																																
	APP ENG	MIKE P.	7-15-20																																
TITLE: TOP ASSEMBLY DRAWING																																			
24-CHANNEL Digital PSM Board that Manages 3 DC1361B Boards																																			
SIZE	IC NO.	LTC2980-24																																	
N/A		DEMO CIRCUIT 3094A																																	
			REV 1																																
SCALE: NONE	FILENAME: DC3094A_Rev1	SHEET 1 OF 13																																	

REVISION HISTORY				
ECO	REV	DESCRIPTION	APPROVED	DATE
-	1	PRODUCTION	MIKE P.	07/15/2020

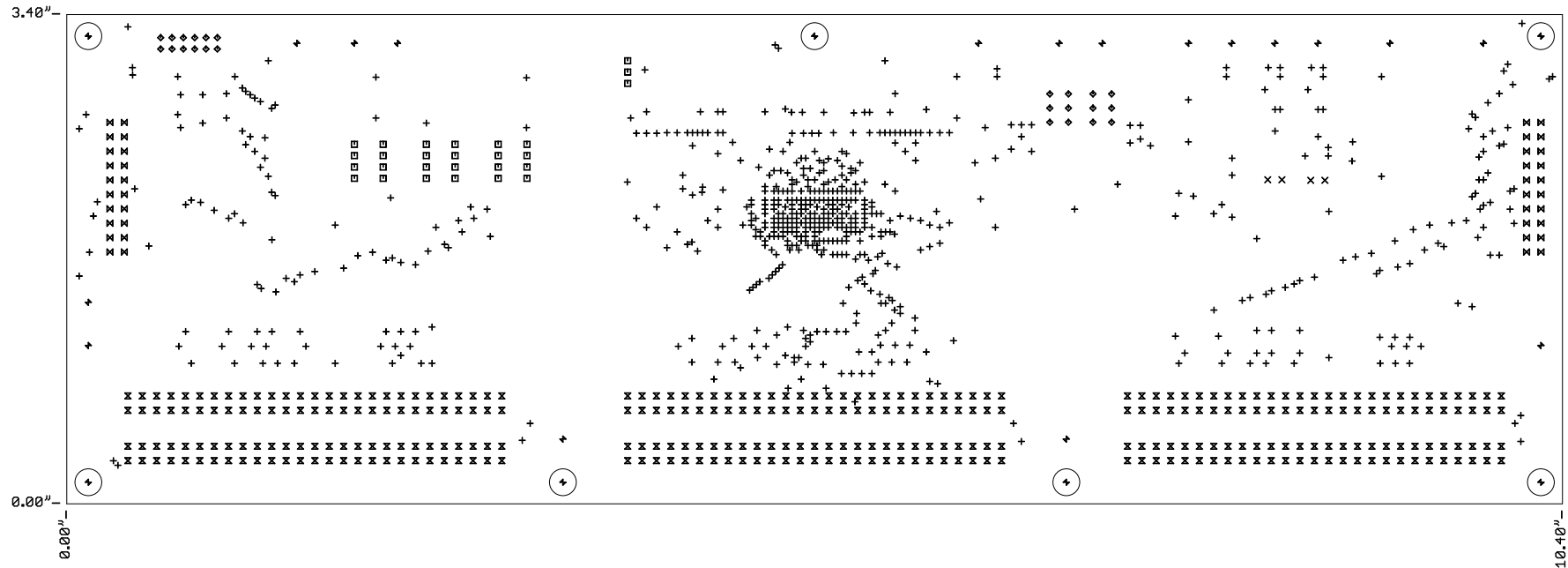
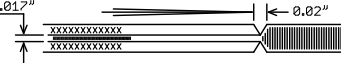


UNLESS OTHERWISE SPECIFIED DIMENSIONS ARE IN INCHES TOLERANCES ON ANGLE +/- 1° 0.001" = +/- 0.01" 0.0005" = +/- 0.005" INTERPRET DIM AND TOL PER ASME Y14.5M-1994	APPROVALS		 1630 MCCARTHY BLVD. MILPITAS, CA 95035 PH: (408) 432-1900 www.analog.com	TITLE: BOTTOM ASSEMBLY DRAWING 24-CHANNEL Digital PSM Board that Manages 3 DC1361B Boards		
	PCB DES.	MIKE P.				7-15-20
	APP ENG	MIKE P.				7-15-20
	THIRD ANGLE PROJECTION					
				SIZE	IC NO.	REV
				N/A	LTC2980-24	1
				DEMO CIRCUIT 3094A		
DO NOT SCALE DRAWING		SCALE: NONE		FILENAME: DC3094A_Rev1		SHEET 2 OF 13

NOTES: UNLESS OTHERWISE SPECIFIED

1. FAB PER IPC-A-600.
2. MATERIAL: EPOXY FIBERGLASS, NEMA GRADE FR-4
FINISHED THICKNESS TO BE 0.062" +/-0.005"
4-LAYER BOARD, 1 OZ. CU ON OUTER LAYERS,
1 OZ. CU ON INNER LAYERS,
FLAMMABILITY RATING: 94 V-2 MINIMUM.
3. SIZE: CUT TO DIMENSIONS AND TOLERANCES SHOWN.
0.00" ARE PRIMARY DATUMS.
4. FINISH: SMOBC USING LPI BOTH SIDES, COLOR BLACK.
ENIG FINISH. LEAD FREE SOLDER CAN BE USED
FOR PROTOTYPE BOARDS.
HIGH DEFINITION WHITE SILKSCREEN.

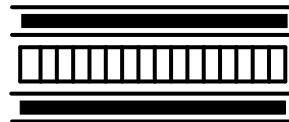
5. DRILL: PLATE THRU ALL HOLES WITH COPPER, 0.001"
THICK MIN. ALL HOLES SHALL BE DRILLED
+/-0.003" WITH RESPECT TO CTR. OF DRILLED
PAD. ALL HOLES FINISHED SIZE AFTER PLATING.
6. DO NOT ALTER ARTWORK e.g. TO ADD LOGO OR DATE CODE.
PAD SIZE CAN BE MODIFIED TO MEET END FINISH.
7. PCBs ARE TO BE RoHS COMPLIANT.
8. SCORING FOR PANELIZED PCB:
0.017"



DRILL TABLE						
Sym	Nº	Mils	MM	Qty	Plated	
+	1	8	0.20	689	YES	
x	2	15	0.38	4	YES	
□	3	31	0.80	27	YES	
◇	4	34	0.86	24	YES	
x	5	35	0.90	324	YES	
⊞	6	40	1.02	40	YES	
+	7	94	2.39	17	YES	
+	8	187	4.75	7	NOT	

LAYER STRUCTURE

TOP



BOTTOM

LAYER 1 - TOP
PREPREG
LAYER 2
CORE
LAYER 3
PREPREG
LAYER 4 - BOTTOM

REVISION HISTORY

ECO	REV	DESCRIPTION	APPROVED	DATE
-	1	PRODUCTION	MIKE P.	07/15/2020

UNLESS OTHERWISE SPECIFIED DIMENSIONS ARE IN INCHES TOLERANCES ON ANGLE +/- 1° 0.000" = +/- 0.005" INTERPRET DIM AND TOL PER ASME Y14.5-2018	APPROVALS		1630 MCCARTHY BLVD. MILPITAS, CA 95035 PH: (408) 432-1900 www.analog.com
	PCB DES.	MIKE P.	
THIRD ANGLE PROJECTION	NAME	DATE	TITLE: FABRICATION DRAWING 24-CHANNEL Digital PSM Board that Manages 3 DC1361B Boards
	APP ENG	MIKE P.	
	SIZE	IC NO.	REV 1
	N/A	LTC2980-24 DEMO CIRCUIT 3094A	
DO NOT SCALE DRAWING	SCALE: NONE	FILENAME: DC3094A_Rev1	SHEET 3 OF 13