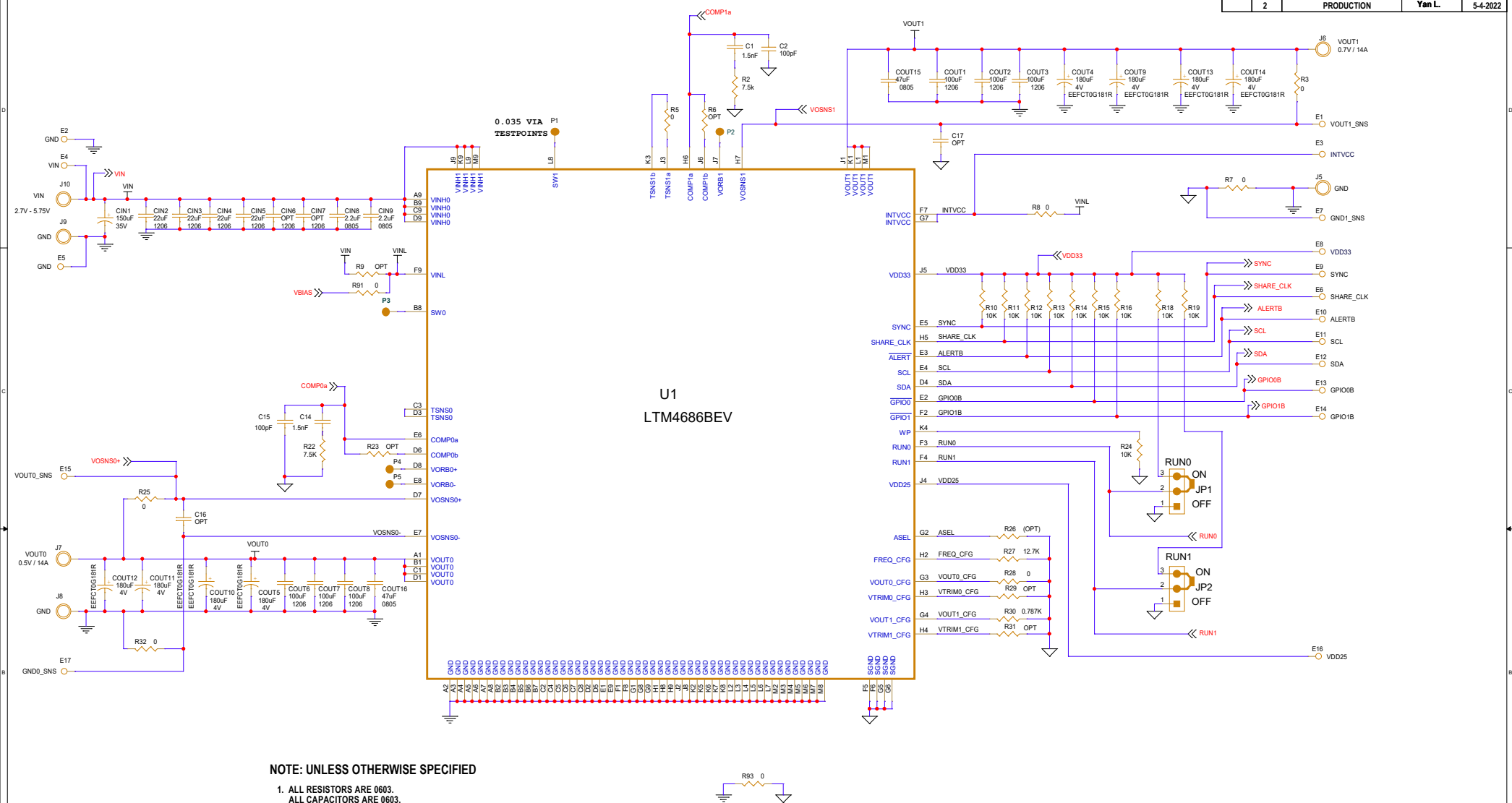




REVISION HISTORY				
ECO	REV	DESCRIPTION	APPROVED	DATE
	2	PRODUCTION	Yan L.	5-4-2022

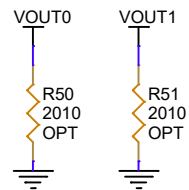


NOTE: UNLESS OTHERWISE SPECIFIED  
1. ALL RESISTORS ARE 0603.  
ALL CAPACITORS ARE 0603.

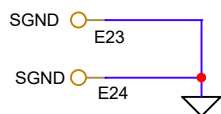
When  $2.70V < V_{in} < 5.50V$ ,  $R_9=OPEN$ ,  $R_{91}=R_{92}=0\Omega$   
When  $4.50V < V_{in} < 5.75V$ ,  $R_9=0\Omega$ ,  $R_{91}=R_{92}=OPEN$

CUSTOMER NOTICE		APPROVALS		POWER BY LINEAR	
ANALOG DEVICES HAS MADE A BEST EFFORT TO DESIGN A CIRCUIT THAT MEETS CUSTOMER-SUPPLIED SPECIFICATIONS. HOWEVER, IT REMAINS THE CUSTOMER'S RESPONSIBILITY TO VERIFY PROPER AND RELIABLE OPERATION IN THE ACTUAL APPLICATION. COMPONENT SUBSTITUTION AND PRINTED CIRCUIT BOARD LAYOUT MAY SIGNIFICANTLY AFFECT CIRCUIT PERFORMANCE OR RELIABILITY. CONTACT ANALOG DEVICES APPLICATIONS ENGINEERING FOR ASSISTANCE.		PCR DES.	HZ	  www.analog.com Phone: (408)432-1900	
		APP ENG.	Yan L.		
THIS CIRCUIT IS PROPRIETARY TO ANALOG DEVICES AND SUPPLIED FOR USE WITH ANALOG DEVICES PARTS.		TITLE: SCHEMATIC		SCHEMATIC NO. AND REVISION:	
		ULTRATHIN DUAL STEP-DOWN uMODULE REGULATOR		DC3089A2	
		WITH POWER SYSTEM MANAGEMENT			
		IC NO.	LTM4686BEV		
		SKU NO.	DC3089A		
		SIZE:	N/A	DATE:	Tuesday, May 24, 2022
				SHEET	1 OF 3

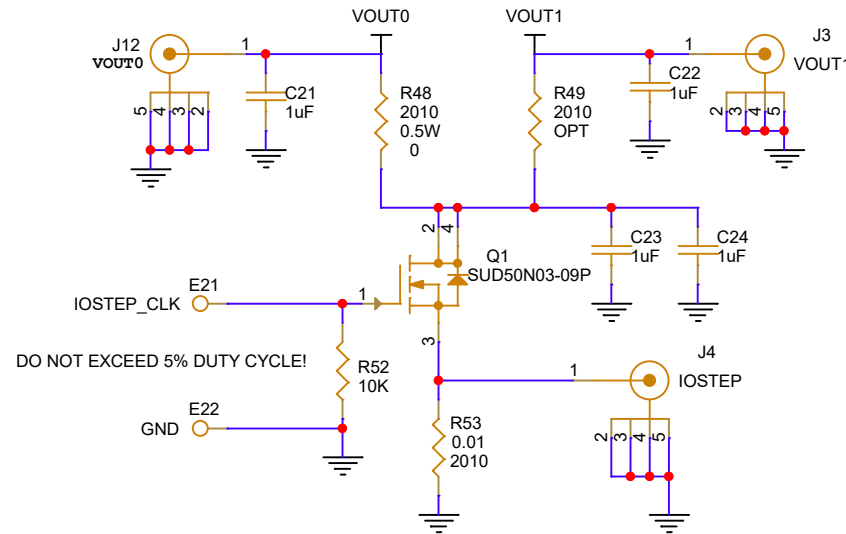
ALL PARTS ON THIS PAGE ARE FOR DEMO ONLY, NOT NEEDED IN CUSTOMER DESIGN



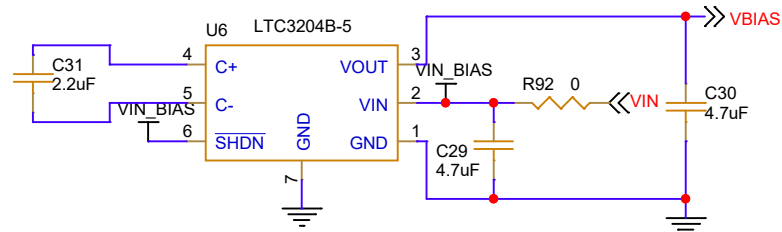
BLEEDER LOADS



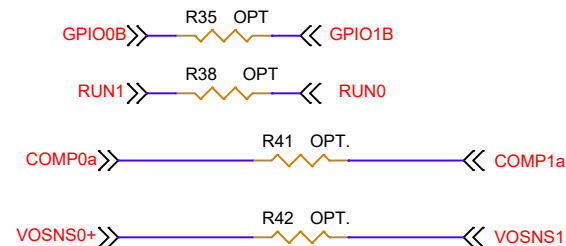
#### DYNAMIC LOAD CIRCUIT



#### OPTIONAL CHARG PUMP FOR 2.7V<=VIN<=5.5V APPLICATION



#### OPTIONAL JUMPER FOR DUAL PHASE SINGLE OUTPUT CONFIGURATION



#### CUSTOMER NOTICE

ANALOG DEVICES HAS MADE A BEST EFFORT TO DESIGN A CIRCUIT THAT MEETS CUSTOMER-SUPPLIED SPECIFICATIONS; HOWEVER, IT REMAINS THE CUSTOMER'S RESPONSIBILITY TO VERIFY PROPER AND RELIABLE OPERATION IN THE ACTUAL APPLICATION. COMPONENT SUBSTITUTION AND PRINTED CIRCUIT BOARD LAYOUT MAY SIGNIFICANTLY AFFECT CIRCUIT PERFORMANCE OR RELIABILITY. CONTACT ANALOG DEVICES APPLICATIONS ENGINEERING FOR ASSISTANCE.

THIS CIRCUIT IS PROPRIETARY TO ANALOG DEVICES AND SUPPLIED FOR USE WITH ANALOG DEVICES PARTS.

#### APPROVALS

PCB DES.	HZ
APP ENG.	Yan L.



www.analog.com

Phone: (408)432-1900

TITLE: SCHEMATIC

ULTRATHIN DUAL STEP-DOWN  $\mu$ MODULE REGULATOR  
WITH POWER SYSTEM MANAGEMENT

IC NO. LTM4686BEV  
SKU NO. DC3089A

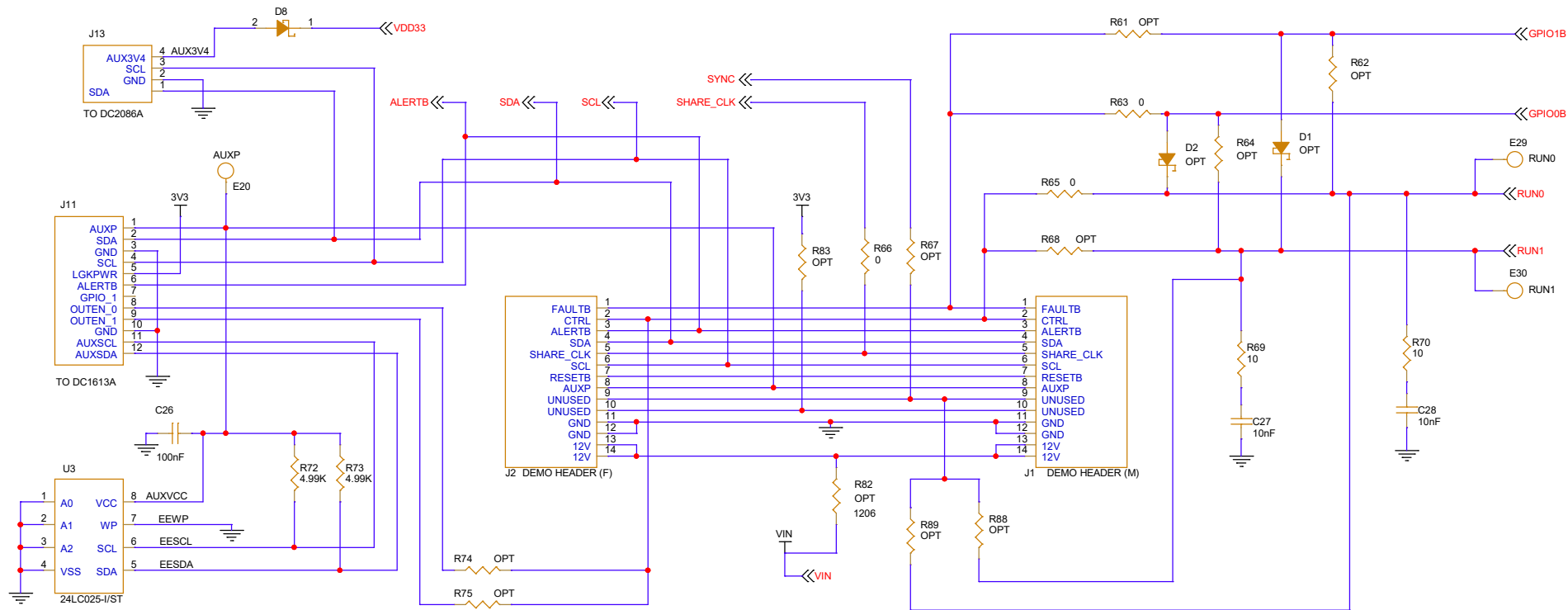
SCHEMATIC NO. AND REVISION:  
DC3089A2

SIZE: N/A

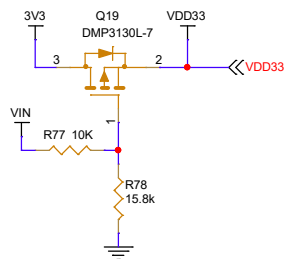
DATE: Tuesday, May 24, 2022

SHEET 2 OF 3

ALL PARTS ON THIS PAGE ARE FOR DEMO BOARD ONLY, NOT NEEDED IN CUSTOMER DESIGN



OPTIONAL CIRCUIT FOR PROGRAMMING  
WITHOUT VIN



PSM STACKING CONNECTORS:

J1, MALE, CONN HEADER 14POS 2MM R/A GOLD, Molex Connector Corp. 87760-1416  
J2, FEMALE, CONN RECEPT 2MM DUAL R/A 14POS, Sullins Conn. NPPN072FJFN-RC

CUSTOMER NOTICE

ANALOG DEVICES HAS MADE A BEST EFFORT TO DESIGN A CIRCUIT THAT MEETS CUSTOMER-SUPPLIED SPECIFICATIONS; HOWEVER, IT REMAINS THE CUSTOMER'S RESPONSIBILITY TO VERIFY PROPER AND RELIABLE OPERATION IN THE ACTUAL APPLICATION. COMPONENT SUBSTITUTION AND PRINTED CIRCUIT BOARD LAYOUT MAY SIGNIFICANTLY AFFECT CIRCUIT PERFORMANCE OR RELIABILITY. CONTACT ANALOG DEVICES APPLICATIONS ENGINEERING FOR ASSISTANCE.

THIS CIRCUIT IS PROPRIETARY TO ANALOG DEVICES AND SUPPLIED FOR USE WITH ANALOG DEVICES PARTS.

APPROVALS

PCB DES.	HZ
APP ENG.	Yan L.



www.analog.com

Phone: (408)432-1900

TITLE: SCHEMATIC  
ULTRATHIN DUAL STEP-DOWN uMODULE REGULATOR

IC NO. LTM4686BEV  
SKU NO. DC3089A

SCHEMATIC NO. AND REVISION:  
DC3089A2

SIZE: N/A

DATE: Tuesday, May 24, 2022

SHEET 3 OF 3