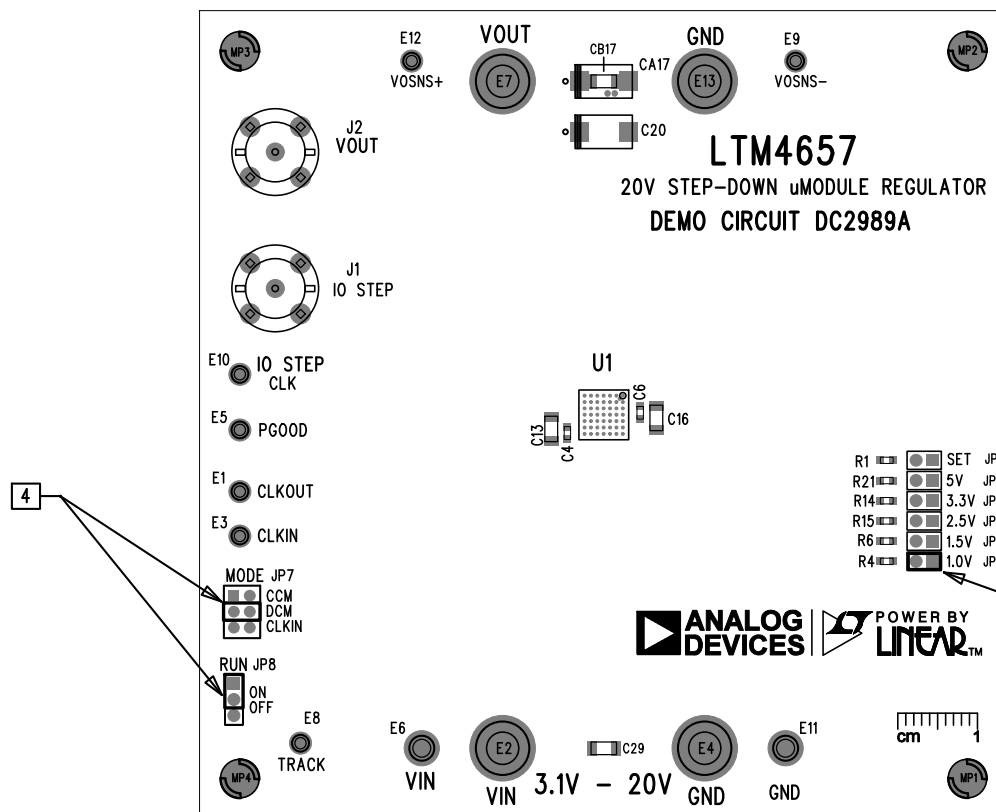
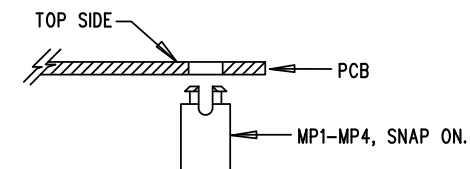


REVISION HISTORY				
ECO	REV	DESCRIPTION	APPR	DATE
-				

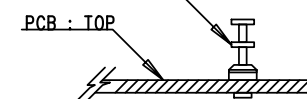


NOTES: UNLESS OTHERWISE SPECIFIED

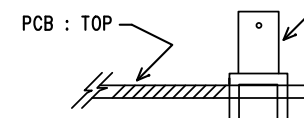
- WORKMANSHIP SHALL BE IN ACCORDANCE WITH IPC-A-610.
- ASSEMBLY PROCESS SHALL INCLUDE REFLOW SOLDER BOTH SIDES. MAXIMUM SOLDER TEMPERATURE SHALL BE <250 DEGREES CELSIUS.
- DEPANELIZE BOARDS AFTER ASSEMBLY AND ROUTE-OUT THE BREAKOUT TABS ON ALL BOARD EDGES.
- INSTALL SHUNTS AT JP1, JP7 AND JP8 IN POSITIONS AS SHOWN.
- LAND PATTERNS NOT STUFFED SHALL BE FREE OF SOLDER. MASK THE SOLDER STENCIL AT THESE LOCATIONS.
- INSTALL 4 STANDOFFS AT MP1-MP4 LOCATIONS AS SHOWN BELOW:



- INSTALL TURRETS AS SHOWN:
TURRETS : TYPICAL, MILL-MAX 2308-2, 2501-2

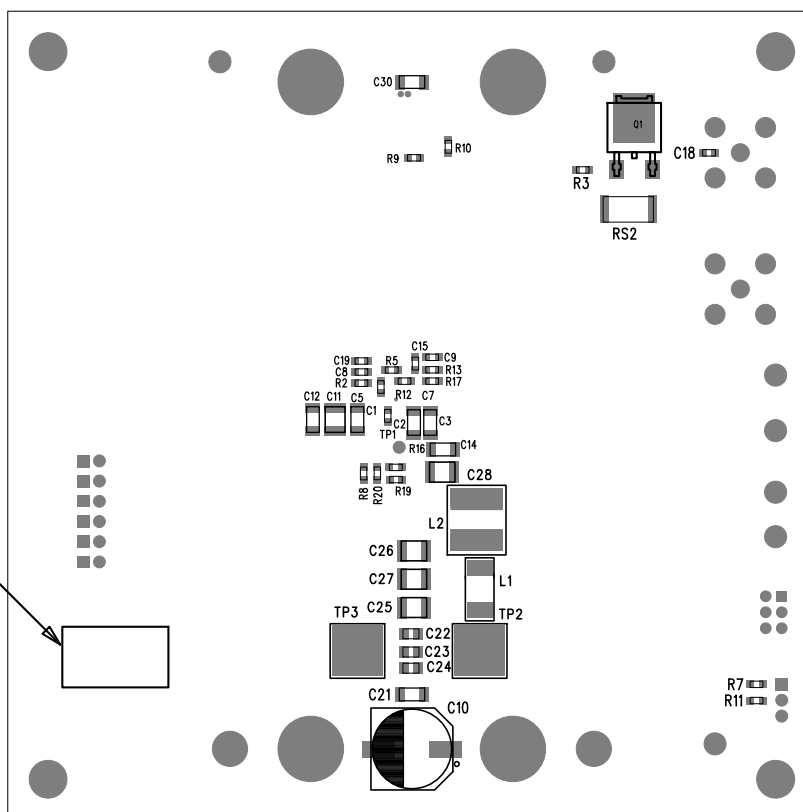


- INSTALL BNC JACKS J1,J2, AS SHOWN:
CONNECTOR : AMPHENOL CONNEX #112404





APPROVALS		ANALOG DEVICES POWER BY LINEAR™		
PCB DES.	M. HAWKINS	FOR ADI CUSTOMER USE ONLY		
APP ENG.	TIM KOZONO	TITLE: ASSEMBLY DRAWING, TOP		
		20V STEP-DOWN uMODULE REGULATOR		
		DEMO CIRCUIT DC2989A		
SCALE = NONE		SIZE	IC NO.	DWG. REV.
		N/A	LTM4657	01
FILENAME:		SHT 1 OF 2		

DEMO S/N LABEL ①
APPLY IN THIS AREA



NOTES: UNLESS OTHERWISE SPECIFIED
1. AFFIX DEMO S/N LABEL AT AREA SHOWN.

APPROVALS		 		
PCB DES.	M. HAWKINS	FOR ADI CUSTOMER USE ONLY		
APP ENG.	TIM KOZONO	TITLE: ASSEMBLY DRAWING, BOTTOM		
		20V STEP-DOWN μ MODULE REGULATOR		
		DEMO CIRCUIT DC2989A		
SCALE = NONE		SIZE N/A	IC NO. LTM4657	DWG. REV. 01
FILENAME:				SHT 2 OF 2