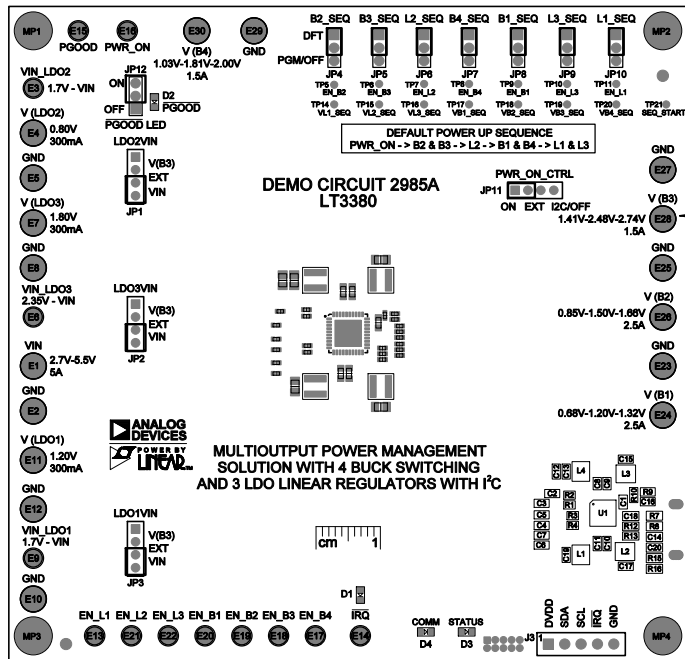
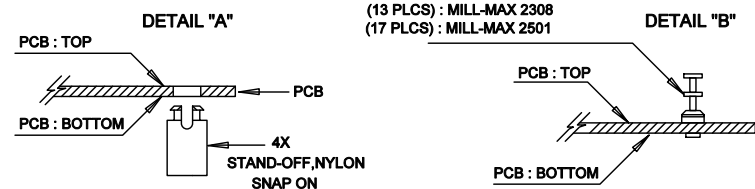




REVISION HISTORY			
ECO	REV	DESCRIPTION	APP. ENG.
-	03	PRODUCTION	WL
			DATE
			12-19-19



NOTES: UNLESS OTHERWISE SPECIFIED

1. WORKMANSHIP SHALL BE IN ACCORDANCE WITH IPC-A-610.
2. ASSEMBLY REFLOW PROFILE SHALL BE IN ACCORDANCE WITH J-STD-020 WITH MAXIMUM SOLDER TEMPERATURE OF 250 DEGREES CELSIUS.
3. PARTS TO OMIT WILL BE SPECIFIED ON THE BILL OF MATERIALS
LOCATIONS OF OMITTED PARTS SHALL BE FREE OF SOLDER.
MASK THE SOLDER STENCIL WHERE SMT PARTS ARE OMITTED.
4. INSTALL SHUNTS AS SHOWN ON ASSY DRAWING.
5. DEPANELIZE BOARDS AFTER ASSEMBLY AND ROUTE-OUT THE BREAKOUT TABS ON FOUR SIDES OF THE BOARD EDGE.
6. APPLY ASSEMBLY STAMP OR QA STAMP TO BOTTOM OF BOARD (UNSHOWY AREA).
7. INSTALL TURRETS, STAND-OFFS AS SHOWN BELOW:
8. APPLY DEMO S/N AT AREA ON BOTTOM SIDE AS SHOWN ON SHEET 2.



APPROVALS		 ANALOG DEVICES		 POWER BY LINEAR™	
PCB DES	NC	FOR ADI CUSTOMER USE ONLY			
APP ENG	WL	TITLE: TOP ASSEMBLY DRAWING MULTIOUTPUT POWER MANAGEMENT SOLUTION WITH 4 BUCK SWITCHING AND 3 LDO LINEAR REGULATORS WITH iC			
		SIZE	IC NO.	LT3380	REV.
		N/A		DEMO CIRCUIT 2985A	03
SCALE = NONE					SHT 1 OF 1

