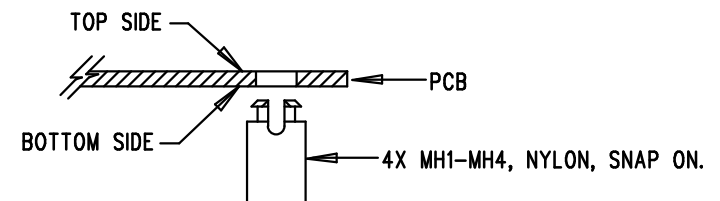
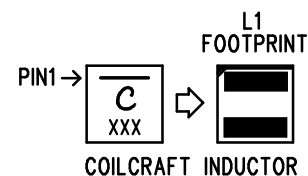
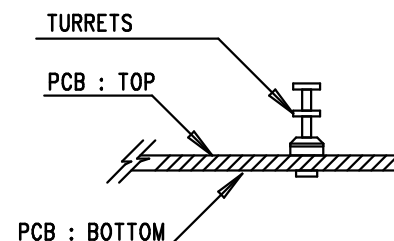




NOTES: UNLESS OTHERWISE SPECIFIED

1. WORKMANSHIP SHALL BE IN ACCORDANCE WITH IPC-A-610.
2. ASSEMBLY PROCESS SHALL INCLUDE: REFLOW SOLDER TOP SIDE SMD. MAXIMUM SOLDER TEMPERATURE IS 240 DEGREES CELSIUS.
3. PARTS TO OMIT WILL BE SPECIFIED ON THE BILL OF MATERIALS. LOCATIONS OF OMITTED PARTS SHALL BE FREE OF SOLDER. MASK THE SOLDER STENCIL WHERE SMT PARTS ARE OMITTED.
4. INSTALL SHUNTS AS SHOWN ON ASSY DRAWING.
5. DEPANELIZE BOARDS AFTER ASSEMBLY AND ROUTE-OUT THE BREAKOUT TABS ON FOUR SIDES OF THE BOARD EDGE.
6. DO NOT APPLY ANY KIND OF ASSEMBLY STAMP OR QA STAMP TO ANY BOARD.
7. INSTALL 4 STANDOFFS AS SHOWN BELOW:

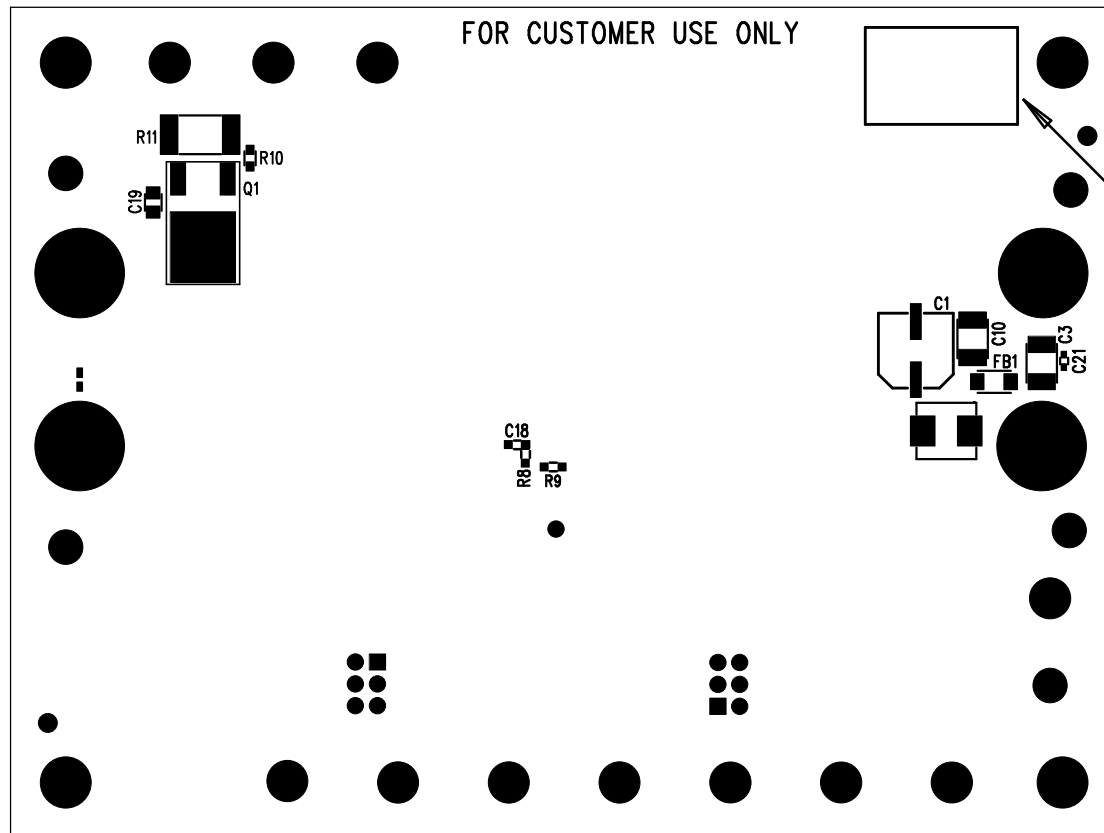


8. INSTALL TURRETS AND BANANAS AS SHOWN BELOW:



		ANALOG DEVICES				POWER BY LINEAR™	
www.analog.com							
TITLE: TOP ASSEMBLY DRAWING							
42V, 10A SYNCHRONOUS STEP-DOWN SILENT SWITCHER 2							
SIZE N/A		IC NO.		LT8638SEV DC2929A		REV. 2	
						SHT 1 OF 2	

FOR CUSTOMER USE ONLY



DEMO BOARD SERIAL NUMBER LABEL



TITLE: BOTTOM ASSEMBLY DRAWING

42V, 10A SYNCHRONOUS
STEP-DOWN SILENT SWITCHER 2

SIZE	IC NO.	REV
N/A	LT8638SEV DC2929A	2
		SHT 2 of 2