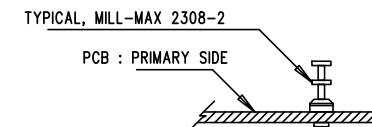


NOTES: UNLESS OTHERWISE SPECIFIED

1. WORKMANSHIP SHALL BE IN ACCORDANCE WITH IPC-A-610.
2. ASSEMBLY PROCESS SHALL INCLUDE REFLOW SOLDER SMD BOTH SIDES. SOLDER TEMPERATURE SHALL NOT EXCEED 240 DEGREES CELSIUS.
3. OMITTED (OPTIONAL) PARTS ARE SPECIFIED ON THE BILL OF MATERIALS. LAND PATTERNS FOR THESE PARTS SHALL BE FREE OF SOLDER. MASK THE SOLDER STENCIL AT THESE LOCATIONS.
4. INSTALL SHUNTS ON JP1-JP4 AS DEPICTED. NOTE THE POSITIONS ARE DIFFERENT FOR EACH ASSEMBLY VARIANT.
5. DEPANELIZE BOARDS AFTER ASSEMBLY AND ROUTE-OUT THE BREAKOUT TABS ON ALL BOARD EDGES.
6. DO NOT APPLY ANY KIND OF ASSEMBLY OR QA STAMP TO BOARD.
7. INSTALL MIL-MAX #2308 TURRETS AS SHOWN:

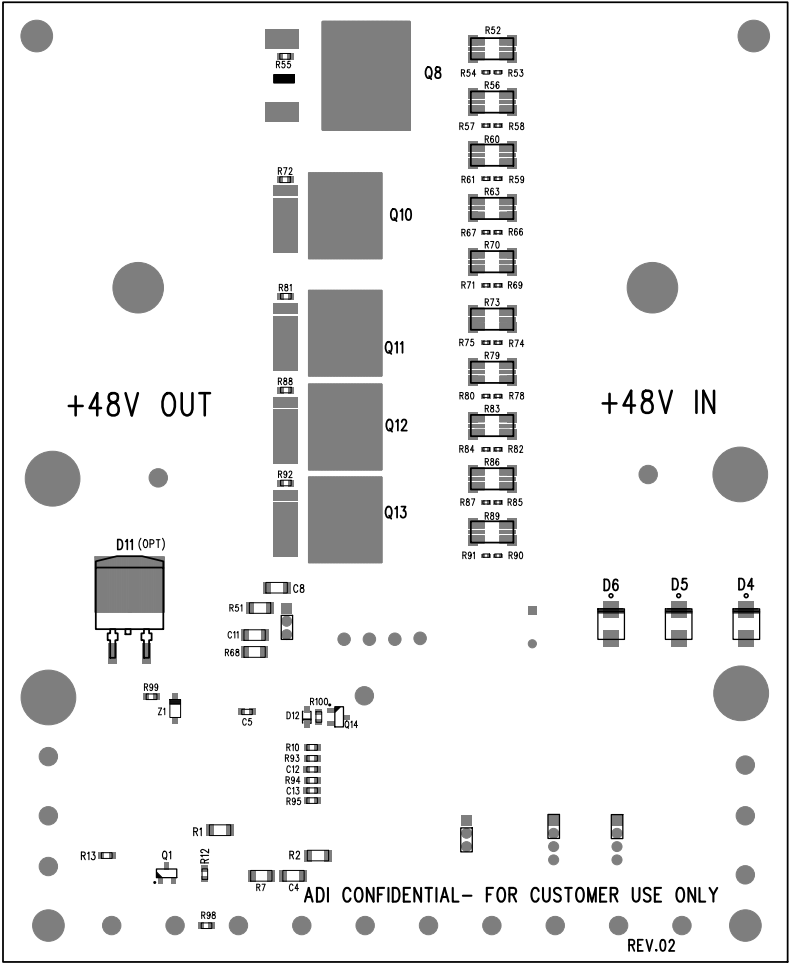


8. INSTALL RINGS E1 AND E4, PANDUIT #S4-14R-T, USING 1/4" HARDWARE PROVIDED. NUT AND SPLITWASHER AND FLAT WASHER BE ON PRIMARY SIDE; SCREW CAP HEAD AND FLAT WASHER SHALL BE ON SECONDARY SIDE. DO NOT SOLDER. FINISHED MOUNTING POSITION SHALL BE AS DEPICTED. TIGHTEN PARTS TO TORQUE AS REQUIRED TO ENSURE PARTS DO NOT COME LOOSE DURING SHIPMENT.
9. INSTALL STANDOFFS, MP1-4, ON SECONDARY SIDE.
10. MARK APPROPRIATE ASSEMBLY VARIANT LETTER WITH BLACK PERMANENT MARKER AS PER BILL OF MATERIALS.
11. MARK APPROPRIATE OUTPUT CURRENT FOR EACH ASSEMBLY VARIANT WITH BLACK PERMANENT MARKER AS PER CHART BELOW:

ASSY VARIANT	AMPS
(-A)	30
(-B)	50
(-C)	50

12. SEPARATE X-Y FILES HAVE BEEN PROVIDED FOR EACH ASSEMBLY VARIANT.

APPROVALS		ANALOG DEVICES POWER BY LINEAR	
PCB DES.	MH	FOR ADI CUSTOMER USE ONLY	
APP ENG.	R. LILARAMANI	TITLE: ASSEMBLY DRAWING, TOP, DC291A-A	
		POSITIVE HIGH VOLTAGE HOT SWAP CONTROLLER	
SCALE = NONE		SIZE N/A	IC NO. LTC4238 DEMO CIRCUIT DC2914A
FILENAME: 705-DC2914A_REV03_PCA_ASSY_DWG		DWG. REV. 03	
		SHT 1 OF 2	



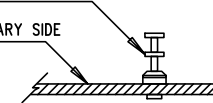
APPROVALS		ANALOG DEVICES POWER BY LTC	
PCB DES.	MH	FOR ADI CUSTOMER USE ONLY	
APP ENG.	R. LILARAMANI	TITLE: ASSEMBLY DRAWING,BOTTOM, DC2914A-A POSITIVE HIGH VOLTAGE HOT SWAP CONTROLLER	
SCALE = NONE		SIZE N/A	IC NO. LTC4238 DEMO CIRCUIT DC2914A
FILENAME: 705-DC2914A_REV03_PCA_ASSY_DWG		DWG. REV. 03	SHT 2 OF 2

NOTES: UNLESS OTHERWISE SPECIFIED

1. WORKMANSHIP SHALL BE IN ACCORDANCE WITH IPC-A-610.
2. ASSEMBLY PROCESS SHALL INCLUDE REFLOW SOLDER SMD BOTH SIDES. SOLDER TEMPERATURE SHALL NOT EXCEED 240 DEGREES CELSIUS.
3. OMITTED (OPTIONAL) PARTS ARE SPECIFIED ON THE BILL OF MATERIALS. LAND PATTERNS FOR THESE PARTS SHALL BE FREE OF SOLDER. MASK THE SOLDER STENCIL AT THESE LOCATIONS.
4. INSTALL SHUNTS ON JP1-JP4 AS DEPICTED. NOTE THE POSITIONS ARE DIFFERENT FOR EACH ASSEMBLY VARIANT.
5. DEPANELIZE BOARDS AFTER ASSEMBLY AND ROUTE-OUT THE BREAKOUT TABS ON ALL BOARD EDGES.
6. DO NOT APPLY ANY KIND OF ASSEMBLY OR QA STAMP TO BOARD.
7. INSTALL MIL-MAX #2308 TURRETS AS SHOWN:

TYPICAL, MILL-MAX 2308-2

PCB : PRIMARY SIDE

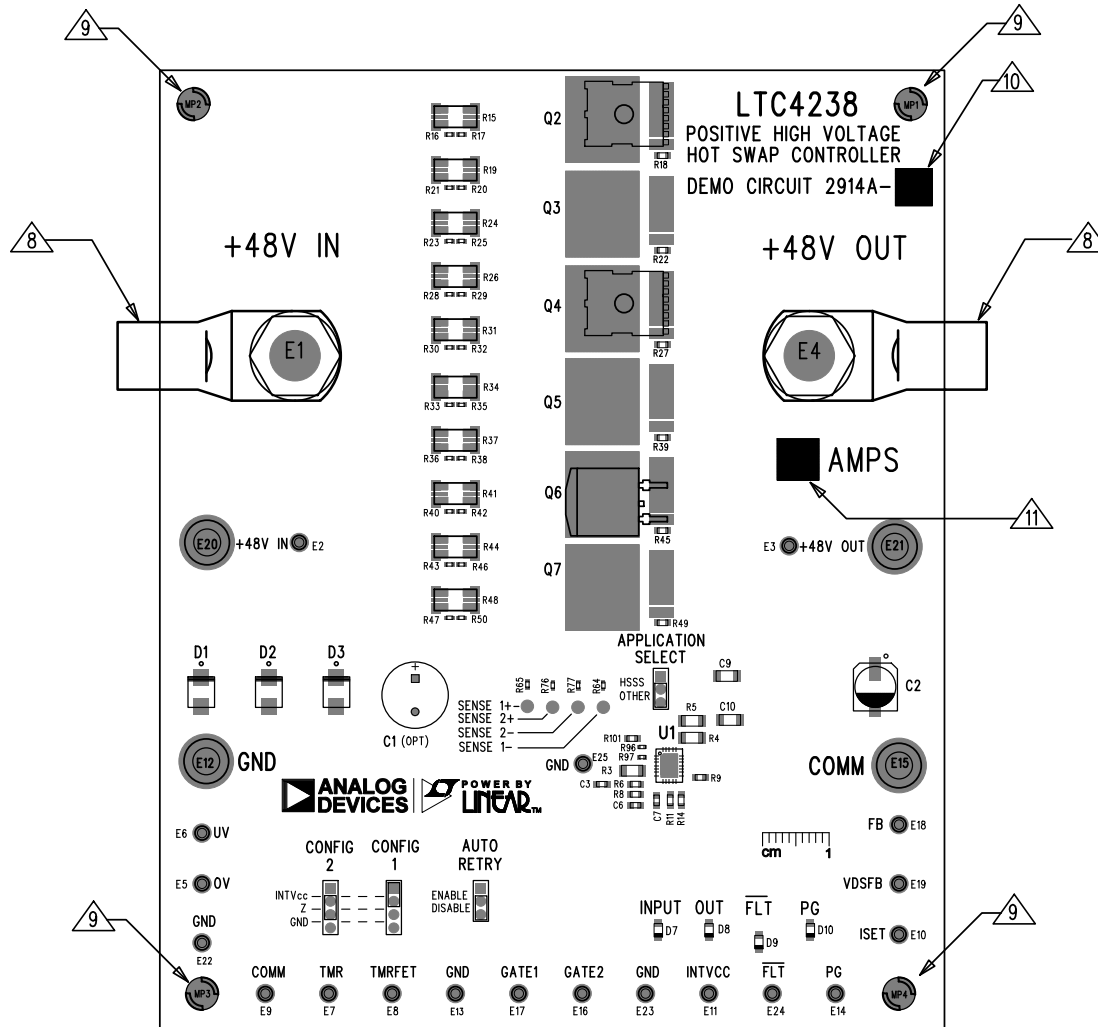


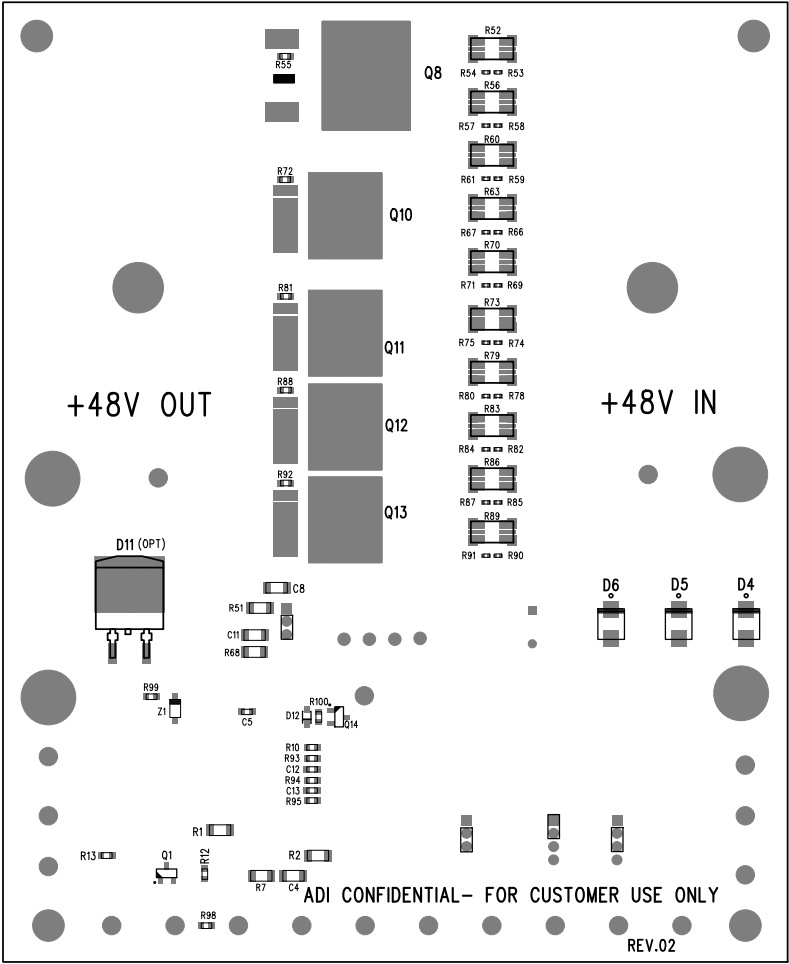
8. INSTALL RINGS E1 AND E4, PANDUIT #S4-14R-T, USING 1/4" HARDWARE PROVIDED. NUT AND SPLITWASHER AND FLAT WASHER BE ON PRIMARY SIDE; SCREW CAP HEAD AND FLAT WASHER SHALL BE ON SECONDARY SIDE. DO NOT SOLDER. FINISHED MOUNTING POSITION SHALL BE AS DEPICTED. TIGHTEN PARTS TO TORQUE AS REQUIRED TO ENSURE PARTS DO NOT COME LOOSE DURING SHIPMENT.
9. INSTALL STANDOFFS, MP1-4, ON SECONDARY SIDE.
10. MARK APPROPRIATE ASSEMBLY VARIANT LETTER WITH BLACK PERMANENT MARKER AS PER BILL OF MATERIALS.
11. MARK APPROPRIATE OUTPUT CURRENT FOR EACH ASSEMBLY VARIANT WITH BLACK PERMANENT MARKER AS PER CHART BELOW:



ASSY VARIANT	AMPS
(-A)	30
(-B)	50
(-C)	50

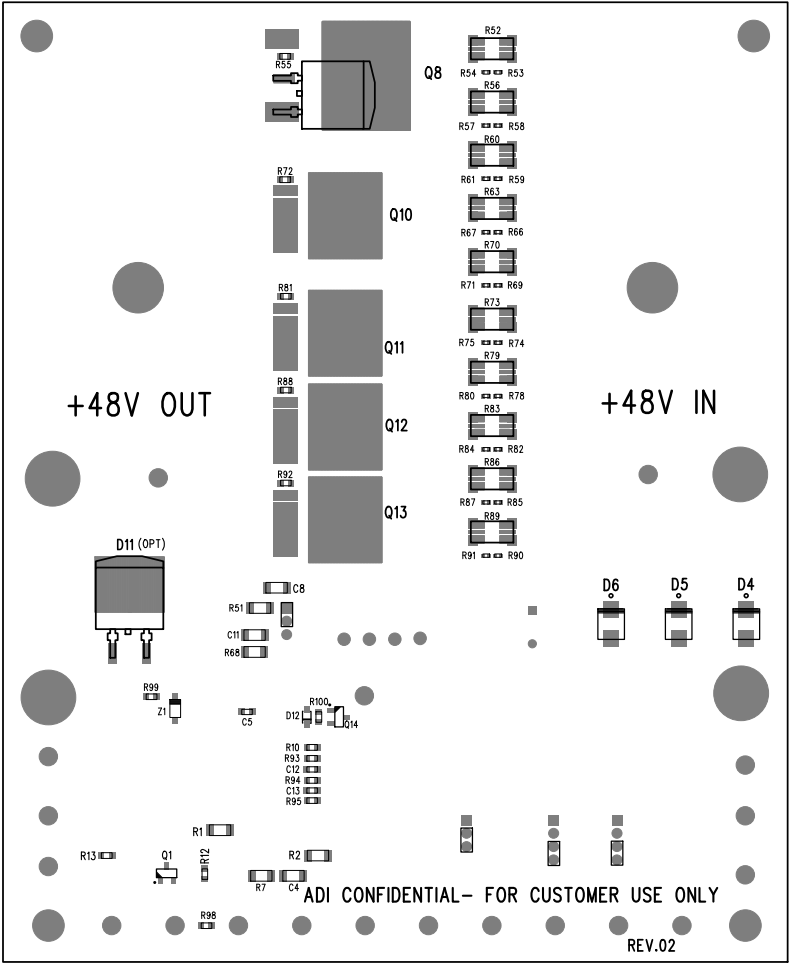
12. SEPARATE X-Y FILES HAVE BEEN PROVIDED FOR EACH ASSEMBLY VARIANT.



APPROVALS		ANALOG DEVICES POWER BY LINEAR	
PCB DES.	MH	FOR ADI CUSTOMER USE ONLY	
APP ENG.	R. LILARAMANI	TITLE: ASSEMBLY DRAWING, TOP, DC291A-B	
		POSITIVE HIGH VOLTAGE HOT SWAP CONTROLLER	
SCALE = NONE		SIZE N/A	IC NO. LTC4238 DEMO CIRCUIT DC2914A
FILENAME: 705-DC2914A_REV03_PCA_ASSY_DWG		DWG. REV. 03	
		SHT 1 OF 2	

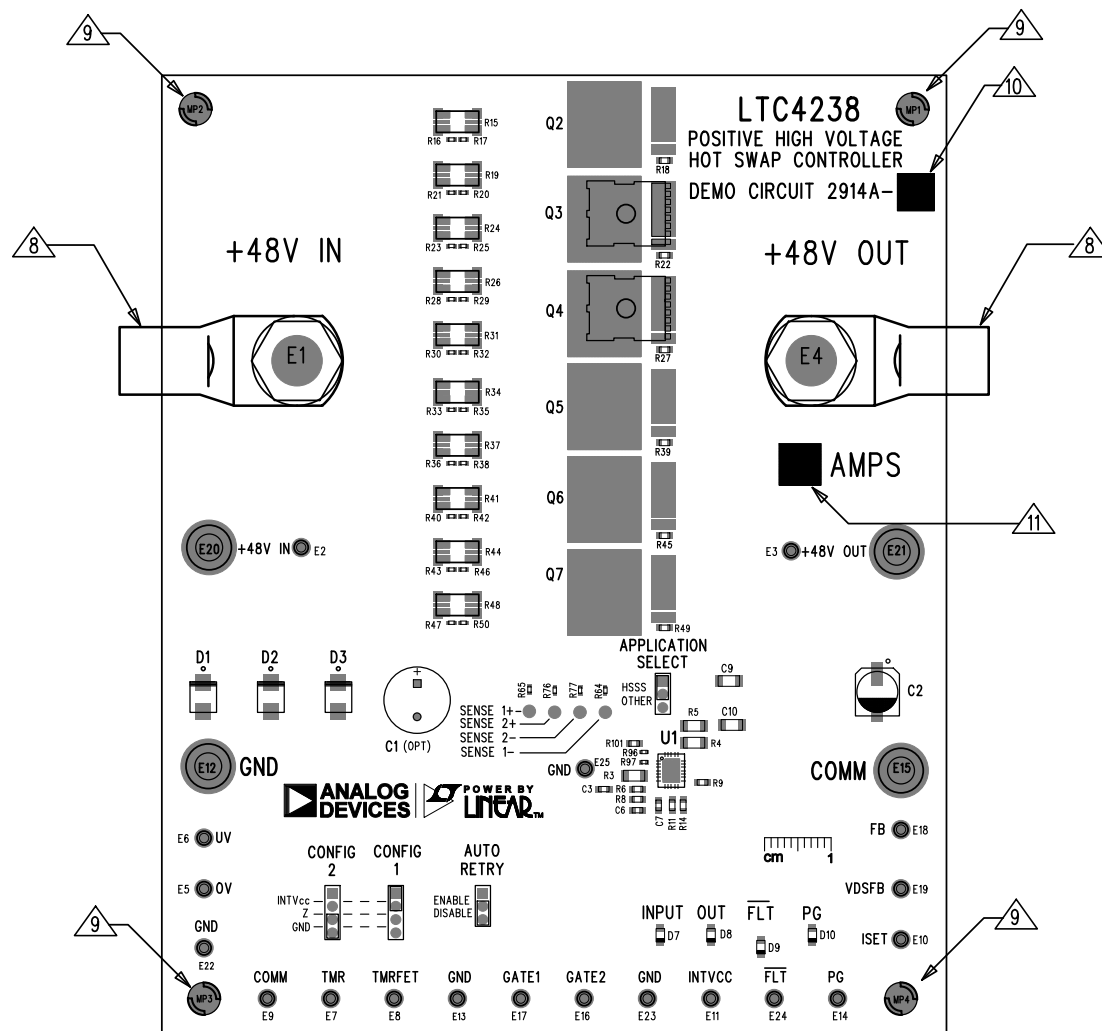




APPROVALS		 		
PCB DES.	MH	FOR ADI CUSTOMER USE ONLY		
APP ENG.	R. LILARAMANI	TITLE: ASSEMBLY DRAWING,BOTTOM, DC2914A -B POSITIVE HIGH VOLTAGE HOT SWAP CONTROLLER		
SCALE = NONE		SIZE N/A	IC NO. LTC4238 DEMO CIRCUIT DC2914A	DWG. REV. 03
FILENAME:		705-DC2914A_REV03_PCA_ASSY_DWG		SHT 2 OF 2

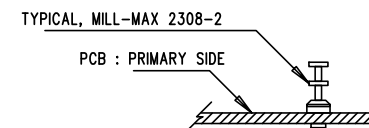


APPROVALS		  FOR ADI CUSTOMER USE ONLY		
PCB DES.	MH	TITLE: ASSEMBLY DRAWING,BOTTOM, DC2914A-C POSITIVE HIGH VOLTAGE HOT SWAP CONTROLLER		
APP ENG.	R. LILARAMANI			
SCALE = NONE		SIZE N/A	IC NO. LTC4238 DEMO CIRCUIT DC2914A	DWG. REV. 03
		FILENAME: 705-DC2914A_REV03_PCA_ASSY_DWG		
				SHT 2 OF 2



NOTES: UNLESS OTHERWISE SPECIFIED

1. WORKMANSHIP SHALL BE IN ACCORDANCE WITH IPC-A-610.
2. ASSEMBLY PROCESS SHALL INCLUDE REFLOW SOLDER SMD BOTH SIDES. SOLDER TEMPERATURE SHALL NOT EXCEED 240 DEGREES CELSIUS.
3. OMITTED (OPTIONAL) PARTS ARE SPECIFIED ON THE BILL OF MATERIALS. LAND PATTERNS FOR THESE PARTS SHALL BE FREE OF SOLDER. MASK THE SOLDER STENCIL AT THESE LOCATIONS.
4. INSTALL SHUNTS ON JP1-JP4 AS DEPICTED. NOTE THE POSITIONS ARE DIFFERENT FOR EACH ASSEMBLY VARIANT.
5. DEPANELIZE BOARDS AFTER ASSEMBLY AND ROUTE-OUT THE BREAKOUT TABS ON ALL BOARD EDGES.
6. DO NOT APPLY ANY KIND OF ASSEMBLY OR QA STAMP TO BOARD.
7. INSTALL MIL-MAX #2308 TURRETS AS SHOWN:



8. INSTALL RINGS E1 AND E4, PANDUIT #S4-14R-T, USING 1/4" HARDWARE PROVIDED. NUT AND SPLITWASHER AND FLAT WASHER BE ON PRIMARY SIDE; SCREW CAP HEAD AND FLAT WASHER SHALL BE ON SECONDARY SIDE. DO NOT SOLDER. FINISHED MOUNTING POSITION SHALL BE AS DEPICTED. TIGHTEN PARTS TO TORQUE AS REQUIRED TO ENSURE PARTS DO NOT COME LOOSE DURING SHIPMENT.
9. INSTALL STANDOFFS, MP1-4, ON SECONDARY SIDE.
10. MARK APPROPRIATE ASSEMBLY VARIANT LETTER WITH BLACK PERMANENT MARKER AS PER BILL OF MATERIALS.
11. MARK APPROPRIATE OUTPUT CURRENT FOR EACH ASSEMBLY VARIANT WITH BLACK PERMANENT MARKER AS PER CHART BELOW:

ASSY VARIANT	AMPS
(-A)	30
(-B)	50
(-C)	50

12. SEPARATE X-Y FILES HAVE BEEN PROVIDED FOR EACH ASSEMBLY VARIANT.

APPROVALS		ANALOG DEVICES POWER BY LINEAR	
PCB DES.	MH	FOR ADI CUSTOMER USE ONLY	
APP ENG.	R. LILARAMANI	TITLE: ASSEMBLY DRAWING, TOP, DC291A-C	
		POSITIVE HIGH VOLTAGE HOT SWAP CONTROLLER	
SCALE = NONE		SIZE N/A	IC NO. LTC4238 DEMO CIRCUIT DC2914A
FILENAME: 705-DC2914A_REV03_PCA_ASSY_DWG		DWG. REV. 03	
		SHT 1 OF 2	