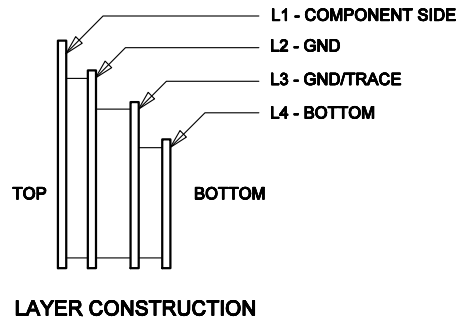
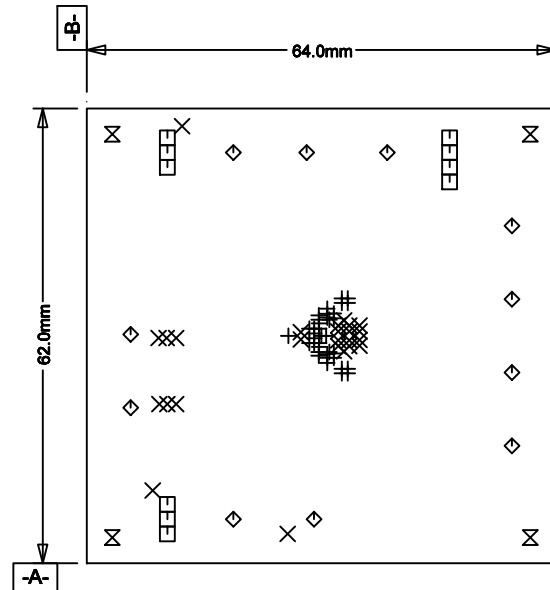


For ADI Customer Use Only



SIZE	QTY	SYM	PLATED	TOL
0.15	37	+	YES	+/-0.13
0.25	25	X	YES	+/-0.08
0.9	10	□	YES	+/-0.08
2.42	11	◇	YES	+/-0.13
4.75	4	⊗	NO	+/-0.13

REVISION HISTORY

ECO	REV	DESCRIPTION	DATE	APPROVED
	5	PROD	09/20/19	☞☞

NOTES: UNLESS OTHERWISE SPECIFIED,

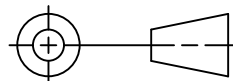
1. ARTWORK P/N DC2910A REV 5.
2. FAB PER IPC-A-600
3. PCB SHALL MEET RoHS COMPLIANCE.
4. MATERIAL:
 - A. LAMINATE: EPOXY FIBERGLASS, NEMA GRADE FR-4
FLAMMABILITY RATING: 94 V-2 MINIMUM.
 - B. THICKNESS: 1.6 +/- 0.1 mm
 - C. CLAD: 2 OZ. (50um) EXTERNAL LAYERS.
1 OZ. (25um) COPPER ON TWO INTERNAL LAYERS.
5. FINISH:
 - A. COATING: SOLDERMASK OVER BARE COPPER,
COLOR, GREEN LPI.
 - B. PLATING: GOLD IMMERSION BOTH SIDES.
 - C. SILKSCREEN: BOTH COMPONENT SIDES WITH
WHITE NON-CONDUCTIVE INK.
6. TOLERANCES:
 - A. WARPAGE: (0.075mm) MAX. ALONG THE LONGEST
DIAG. AS PER IPC-TM650 METHOD 2.4.22.
 - B. ETCHING: +0.03mm, -0.3mm OF MASTER PATTERN.
 - C. REGISTRATION: 0.075mm MAX.
 - D. MASK THICKNESS: 0.025mm MIN., 0.075mm MAX.
 - E. HOLE PLATING: 22um +/- 3um.
7. SIZE:
 - A. CUT TO DIMENSIONS AND TOLERANCES SHOWN.
0.00 ARE PRIMARY DATUMS.
8. HOLE DIAMETERS ARE POST-PLATED SIZES.
9. DEBURR AND BREAK ALL SHARP EDGES.
10. DO NOT ALTER ARTWORK e.g. TO ADD LOGO OR DATE CODE.
11. PLUG ALL VIA'S WITH NON-CONDUCTIVE EPOXY AND PLATE OVER. PLANARIZE FINAL SURFACE.
12. DESIGN HAS SOLDER MASK DEFINED PADS ON U1.
U1 SOLDERMASK SIZE IS 0.35mm AND PAD SIZE IS 0.38mm.
DO NOT CHANGE PAD SIZE OR SOLDER MASK SIZE.

UNLESS OTHERWISE SPECIFIED
DIMENSIONS ARE IN MILLIMETERS
TOLERANCES ON ANGLE ± 1°

.XX ± 0.25

.XXX ± 0.127

THIRD ANGLE PROJECTION



DO NOT SCALE DRAWING

CONTRACT NO.

APPROVALS

DATE

DRAWN

08/10/18

CHECKED

APPROVED

09/20/19

DESIGNED BY



2555 Augustine Drive
Santa Clara, CA 95054
www.analog.com
1-800-262-5643 (toll free)

TITLE

FAB, LTM4691EY, DUAL STEP-DOWN DC/DC
μ MODULE® REGULATOR

SIZE
A

CAGE CODE

DWG NO.

DC2910A

REV
5

SCALE 1/1

FILENAME: 2910A-4.PCB

SHEET 1 OF 1