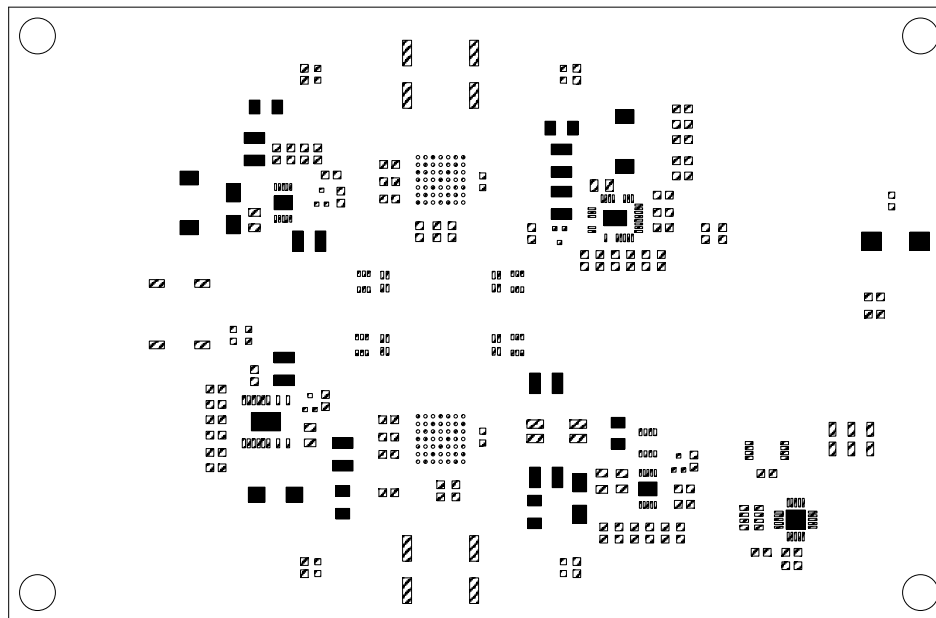

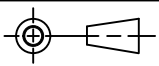


REVISION HISTORY				
ECO	REV	DESCRIPTION	APPROVED	DATE
-	1	PRODUCTION	MIKE P.	09/05/2019



UNLESS OTHERWISE SPECIFIED DIMENSIONS ARE IN INCHES TOLERANCES ON ANGLE +/- 1° 0.XX" = +/- 0.01" 0.XXX" = +/- 0.005" INTERPRET DIM AND TOL PER ASME Y14.5M-1994		APPROVALS		 1630 MCCARTHY BLVD. MILPITAS, CA 95033 PH: (408) 432-1900 LTC CONFIDENTIAL FOR CUSTOMER USE ONLY			
		NAME	DATE				
		PCB DES. MIKE P.	9-5-19				
		ENG MIKE P.	9-5-19				
THIRD ANGLE PROJECTION				TITLE: TOP PASTE LTC2971 2-CHANNEL HV POWER SYSTEM MANAGER			
							
DO NOT SCALE DRAWING		SCALE: NONE		SIZE N/A	IC NO. LTC2971 DEMO CIRCUIT 2875A	REV 1	
FILENAME: DC2875A_Rev1				SHEET 5 OF 13			