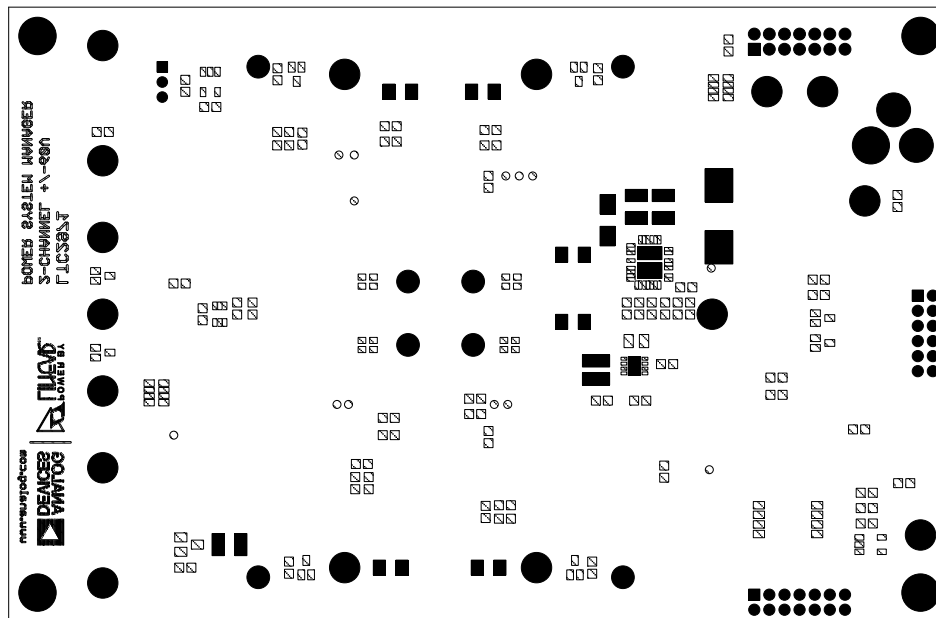

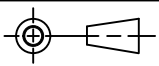


REVISION HISTORY				
ECO	REV	DESCRIPTION	APPROVED	DATE
-	1	PRODUCTION	MIKE P.	09/05/2019



UNLESS OTHERWISE SPECIFIED DIMENSIONS ARE IN INCHES TOLERANCES ON ANGLE: $\pm 1^\circ$ $0.XX'' = \pm 0.01''$ $0.XXX'' = \pm 0.005''$ INTERPRET DIM AND TOL PER ASME Y14.5M-1994		APPROVALS		 1630 MCCARTHY BLVD. MILPITAS, CA 95033 PH: (408) 432-1900 LTC CONFIDENTIAL FOR CUSTOMER USE ONLY		
		NAME	DATE			
		PCB DES. MIKE P.	9-5-19			
		ENG MIKE P.	9-5-19			
THIRD ANGLE PROJECTION				TITLE: BOTTOM SOLDERMASK LTC2971 2-CHANNEL HV POWER SYSTEM MANAGER		
						
DO NOT SCALE DRAWING		SCALE: NONE		SIZE N/A	IC NO. LTC2971 DEMO CIRCUIT 2875A	REV 1
FILENAME: DC2875A_Rev1				SHEET 12 OF 13		