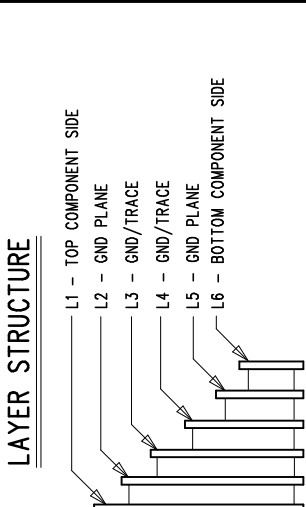
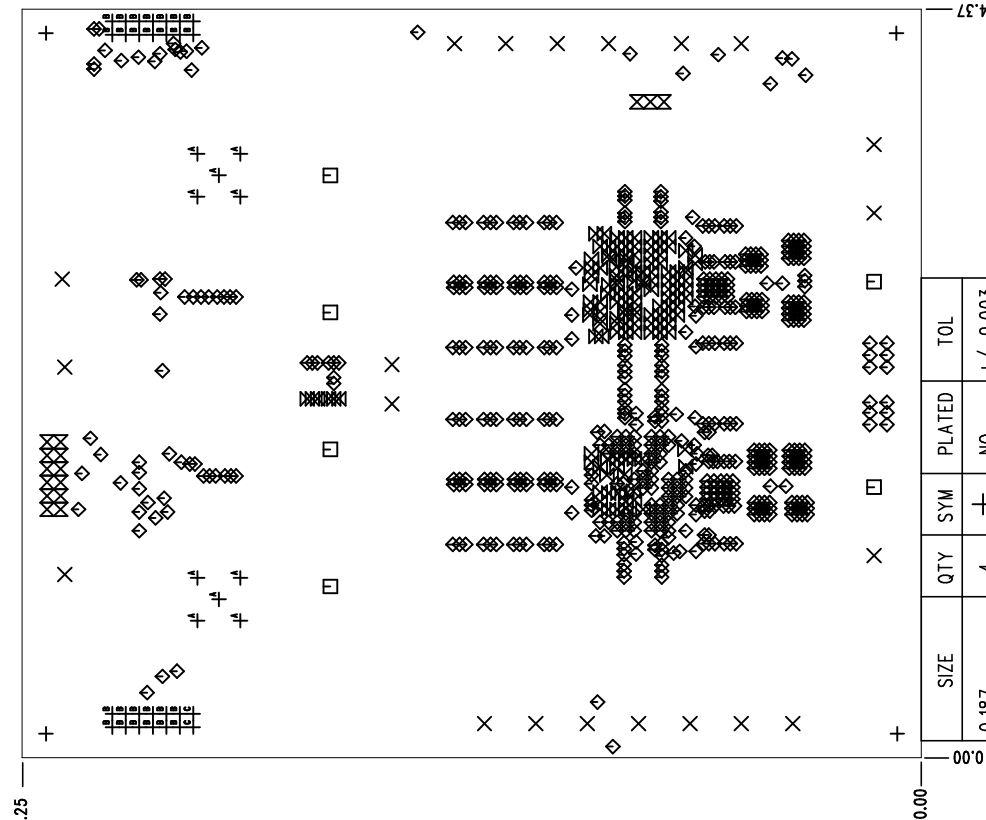
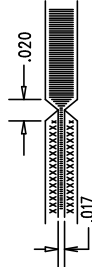


REVISION HISTORY			
ECO	REV	DESCRIPTION	APP. ENG.
-	1	PROTOTYPE	Xuebing C.
			8-6-2020



NOTES: UNLESS OTHERWISE SPECIFIED

1. FAB PER IPC-A-600.
2. MATERIAL: -LEAD FREE ASSEMBLY COMPLIANT, ISOLA FR-370HR OR EQUIVALENT.
-FINISHED THICKNESS TO BE 0.062 +/- .005
-TOTAL OF 6 LAYERS WITH 2 OZ. CU ON ALL THE LAYERS
-FLAMMABILITY RATING: 94 V-0 MINIMUM.
3. SIZE: CUT TO DIMENSIONS AND TOLERANCES SHOWN.
0.00 ARE PRIMARY DATUMS.
4. DRILLING: -DRILL HOLES PER SCHEDULE. PLATE THROUGH HOLES WITH COPPER, 0.001" THICK MIN.
-ALL HOLE SIZES ARE SPECIFIED AFTER PLATING.
-HOLE LOCATION TOLERANCES ARE +/-0.003 IN RELATION TO CENTER
5. FINISH: -SMOBC USING LPI BOTH SIDES, COLOR GREEN.
-GOLD IMMERSION BOTH SIDES.
-FOR SILKSCREENS: USE WHITE NON-CONDUCTIVE INK.
6. DO NOT ALTER ARTWORK e.g. TO ADD LOGO OR DATE CODE.
7. DESIGN HAS SOLDER MASK DEFINED PADS ON U1.
U1 SOLDER MASK SIZE IS 0.025 INCH AND PAD SIZE IS 0.029 INCH.
DON'T CHANGE PAD SIZE OR SOLDER MASK SIZE.
8. PCBs ARE TO BE RoHS COMPLIANT.
9. SCORING FOR PANELIZED PCB:



UNLESS OTHERWISE SPECIFIED		APPROVALS	
DIMENSIONS ARE IN INCHES		PCB DES.	HZ
TOLERANCES:		APP. ENG.	Xuebing C.
0.XX = ± 0.01		TITLE: FABRICATION DRAWING	
0.XXX = ± 0.005		HIGH EFFICIENCY, POLY-PHASE, DC/DC STEP-DOWN MODULE REGULATOR	
INTERPRET DIM AND TOL PER ASME Y14.5M-1994		WITH DIGITAL POWER MANAGEMENT	
THIRD ANGLE PROJECTION		SIZE IC NO. LTM4680EY	
		N/A DEMO CIRCUIT 2863A	
		SCALE = NONE	
		FILENAME: DC2863A-1.PCB	
		REV 1	
		SHT 1 OF 1	

ANALOG DEVICES POWER BY IS30 MCARTHY REV D
LITEX
FOR ADI CUSTOMER USE ONLY
WWW.ADILOG.COM