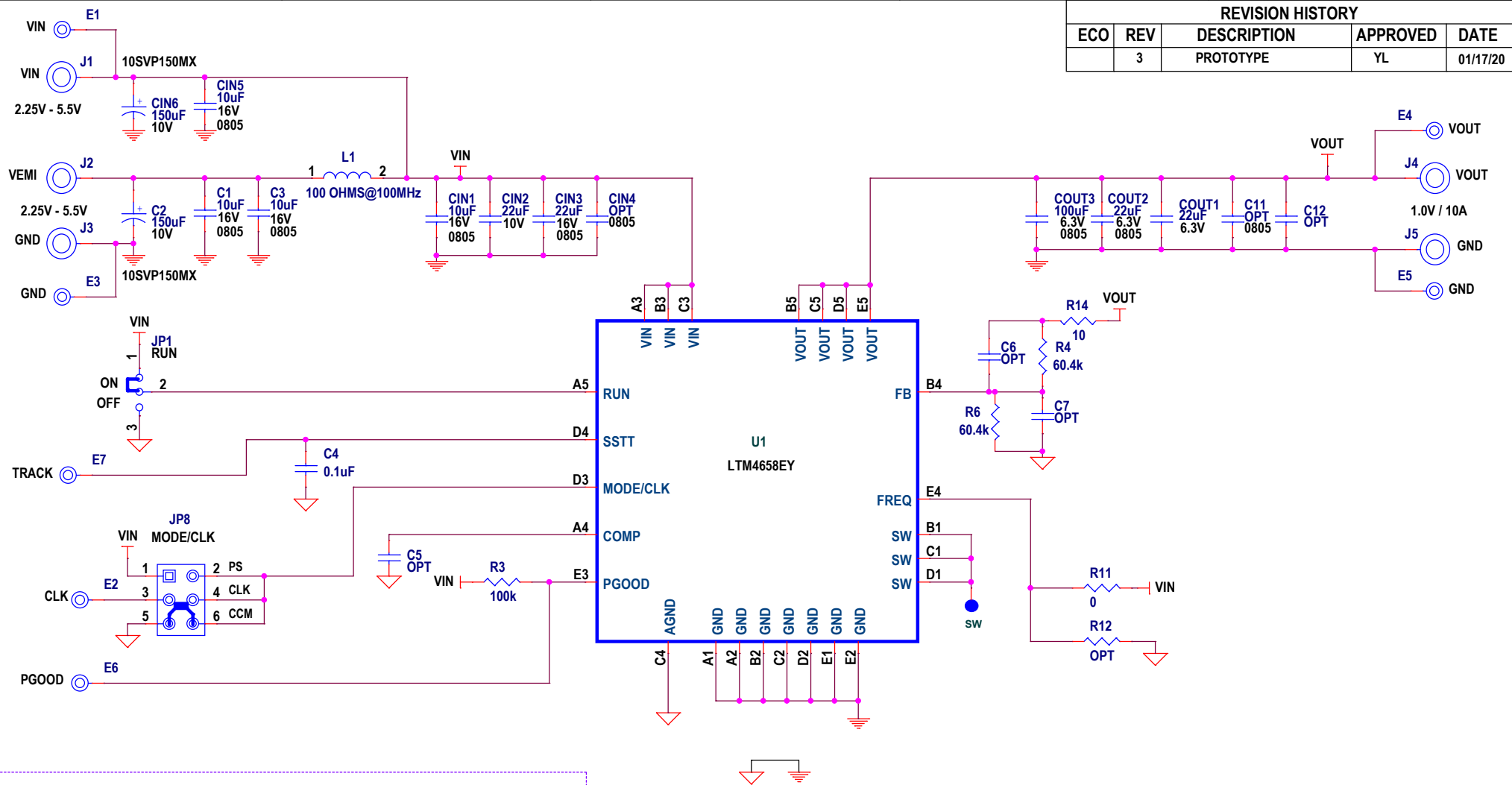
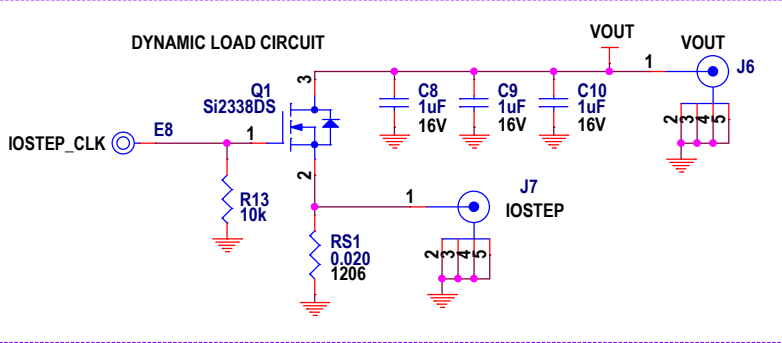


PCA ADDITIONAL PARTS

MP1	STANDOFF,NYLON,SNAP-ON,0.50"
MP2	STANDOFF,NYLON,SNAP-ON,0.50"
MP3	STANDOFF,NYLON,SNAP-ON,0.50"
MP4	STANDOFF,NYLON,SNAP-ON,0.50"
LB1	BOARD S/N LABEL
PCB1	PCB, DC2861A REV03
STNCL1	TOOL, STENCIL, 700-DC2861A REV03




REVISION HISTORY				
ECO	REV	DESCRIPTION	APPROVED	DATE
	3	PROTOTYPE	YL	01/17/20



NOTES: UNLESS OTHERWISE SPECIFIED

1. ALL RESISTORS AND CAPACITORS ARE 0603.

<Variant Name>

<div>CUSTOMER NOTICE</div> <div>ANALOG DEVICES HAS MADE A BEST EFFORT TO DESIGN A CIRCUIT THAT MEETS CUSTOMER-SUPPLIED SPECIFICATIONS; HOWEVER, IT REMAINS THE CUSTOMER'S RESPONSIBILITY TO VERIFY PROPER AND RELIABLE OPERATION IN THE ACTUAL APPLICATION. COMPONENT SUBSTITUTION AND PRINTED CIRCUIT BOARD LAYOUT MAY SIGNIFICANTLY AFFECT CIRCUIT PERFORMANCE OR RELIABILITY. CONTACT ANALOG DEVICES APPLICATIONS ENGINEERING FOR ASSISTANCE.</div> <div>THIS CIRCUIT IS PROPRIETARY TO ANALOG DEVICES AND SUPPLIED FOR USE WITH ANALOG DEVICES PARTS.</div>		<div>APPROVALS</div> <table><tr><td>PCB DES.</td><td>LT</td></tr><tr><td>APP ENG.</td><td>YAN L.</td></tr><tr><td></td><td></td></tr><tr><td></td><td></td></tr><tr><td></td><td></td></tr><tr><td></td><td></td></tr><tr><td></td><td></td></tr></table>		PCB DES.	LT	APP ENG.	YAN L.											<div><div></div><div><div>ANALOG DEVICES</div><div>AHEAD OF WHAT'S POSSIBLE™</div></div></div> <div><div>TITLE: SCHEMATIC</div><div>LOW VIN, HIGH EFFICIENCY 10A</div><div>STEP-DOWN DC/DC μMODULE REGULATOR</div></div> <div><div>IC NO. LTM4658EY</div><div>SKU NO. DC2861A</div></div> <div><div>SIZE: N/A</div><div>DATE: Friday, October 01, 2021</div></div>				<div><div>2555 AUGUSTINE DRIVE</div><div>SANTA CLARA, CA 95054</div><div>www.analog.com</div></div> <div><div>SCHEMATIC NO. AND REVISION:</div><div>710-DC2861A_REV03</div></div> <div><div>SHEET 1 OF 1</div></div>	
PCB DES.	LT																						
APP ENG.	YAN L.																						