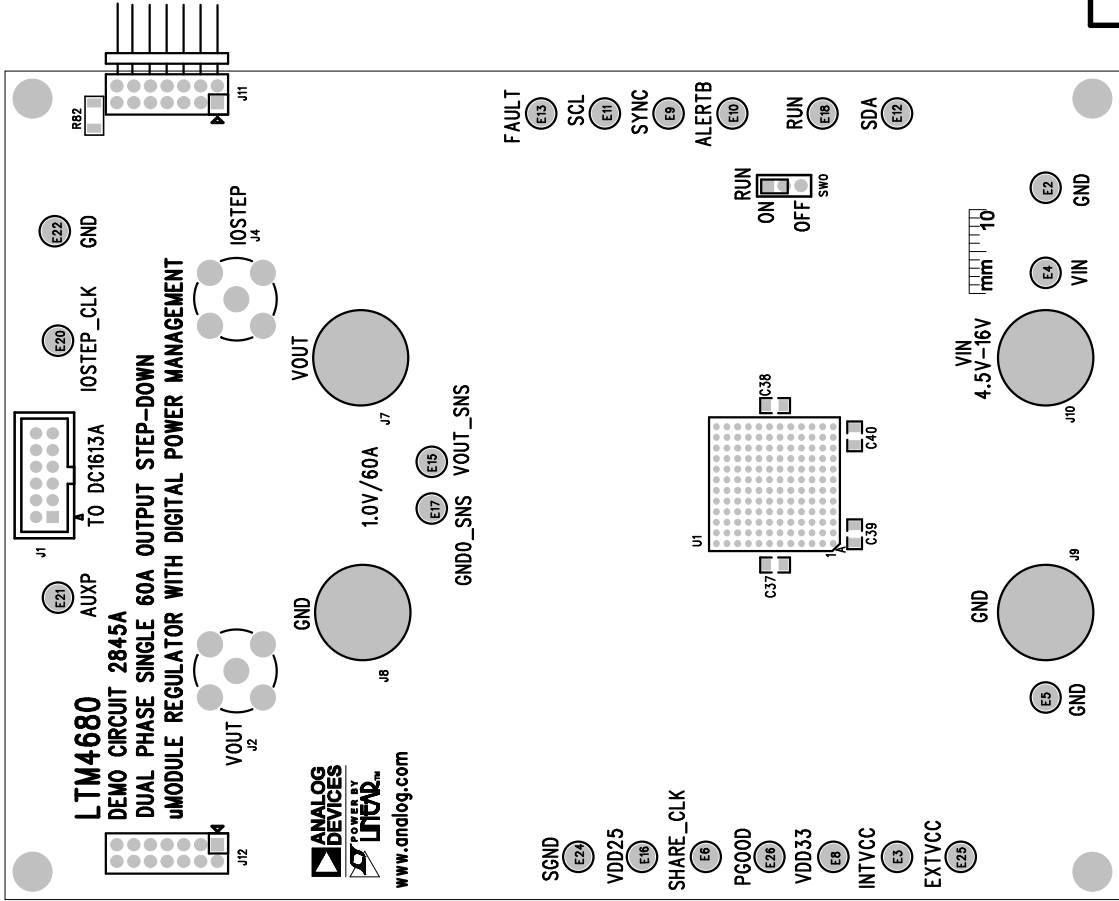
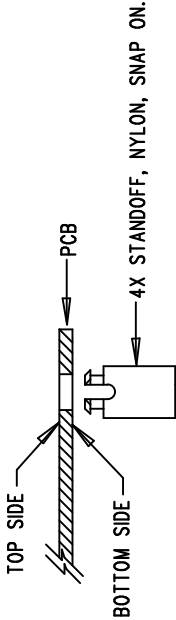




REVISION HISTORY			
ECO	REV	DESCRIPTION	APP. ENG.
-	1	PRODUCTION	Xuebing C.
			DATE
			10-4-18



NOTES: UNLESS OTHERWISE SPECIFIED

1. WORKMANSHIP SHALL BE IN ACCORDANCE WITH IPC-A-610.
2. ASSEMBLY PROCESS SHALL INCLUDE: REFLOW SOLDER TOP SIDE SMD. MAXIMUM SOLDER TEMPERATURE IS 240 DEGREES CELSIUS.
3. PARTS TO OMIT WILL BE SPECIFIED ON THE BILL OF MATERIALS. LOCATIONS OF OMITTED PARTS SHALL BE FREE OF SOLDER. MASK THE SOLDER STENCIL WHERE SMT PARTS ARE OMITTED.
4. INSTALL SHUNTS AS SHOWN ON ASSY DRAWING.
5. DEPANELIZE BOARDS AFTER ASSEMBLY AND ROUTE-OUT THE BREAKOUT TABS ON FOUR SIDES OF THE BOARD EDGE.
6. DO NOT APPLY ANY KIND OF ASSEMBLY STAMP OR QA STAMP TO ANY BOARD.
7. INSTALL 4 STANDOFFS AT 4 LOCATIONS AS SHOWN BELOW:



APPROVALS		 ANALOG DEVICES		 POWER BY LINEAR™		1630 MCCARTHY BLVD MILPITAS, CA 95035 PH: (408)432-1900 WWW.ANALOG.COM	
PCB DES.	HZ						
APP ENG.	Xuebing C.	TITLE: TOP ASSEMBLY DRAWING					
		DUAL PHASE SINGLE 60A OUTPUT STEP-DOWN					
		uMODULE REGULATOR WITH DIGITAL POWER MANAGEMENT					
		SIZE	IC NO.	LTM4680EY	REV.		
		N/A	DEMO CIRCUIT	2845A	1		
SCALE = NONE		FILENAME: DC2845A-1.PCB				SHT 1 OF 2	