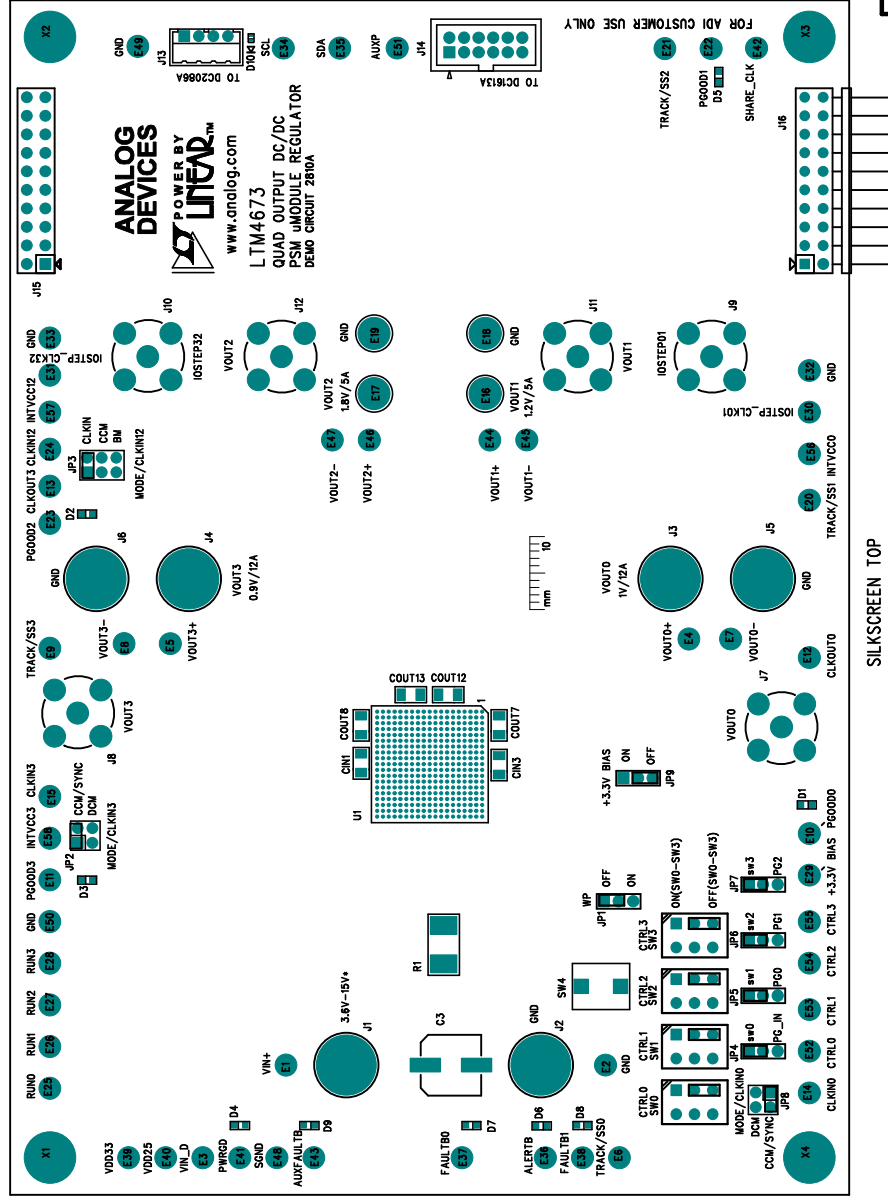
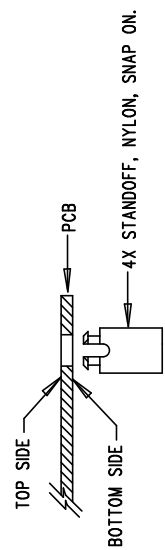


| REVISION HISTORY | | | |
|------------------|-----|-------------|---------|
| ECO | REV | DESCRIPTION | DATE |
| - | 2 | PRODUCTION | 8-13-19 |



NOTES: UNLESS OTHERWISE SPECIFIED

1. WORKMANSHIP SHALL BE IN ACCORDANCE WITH IPC-A-610.
2. ASSEMBLY PROCESS SHALL INCLUDE: REFLOW SOLDER TOP SIDE SMD. MAXIMUM SOLDER TEMPERATURE IS 240 DEGREES CELSIUS.
3. PARTS TO OMIT WILL BE SPECIFIED ON THE BILL OF MATERIALS. LOCATIONS OF OMITTED PARTS SHALL BE FREE OF SOLDER. MASK THE SOLDER STENCIL WHERE SMT PARTS ARE OMITTED.
4. INSTALL SHUNTS AS SHOWN ON ASSY DRAWING.
5. DEPANELIZE BOARDS AFTER ASSEMBLY AND ROUTE-OUT THE BREAKOUT TABS ON FOUR SIDES OF THE BOARD EDGE.
6. DO NOT APPLY ANY KIND OF ASSEMBLY STAMP OR QA STAMP TO ANY BOARD.
7. INSTALL 4 STANDOFFS AT 4 LOCATIONS AS SHOWN BELOW:



| APPROVALS | | ANALOG DEVICES | | POWER BY LITTECH | | 2555 Augustine Dr Santa Clara, CA 95054 PH: (408) 432-1900 WWW.ANALOG.COM | |
|--------------|----|----------------|--|---|--|--|--|
| PCB DES. | HZ | | | FOR ADI CUSTOMER USE ONLY | | | |
| APP ENG. | GL | | | TITLE: TOP ASSEMBLY DRAWING | | | |
| | | | | QUAD OUTPUT DC/DC PSM uMODULE REGULATOR | | | |
| | | | | SIZE IC NO. LTM4673Y | | REV. 2 | |
| | | | | N/A DEMO CIRCUIT 2810A | | | |
| SCALE = NONE | | | | FILENAME: DC2810A-2.PCB | | SHT 1 OF 2 | |