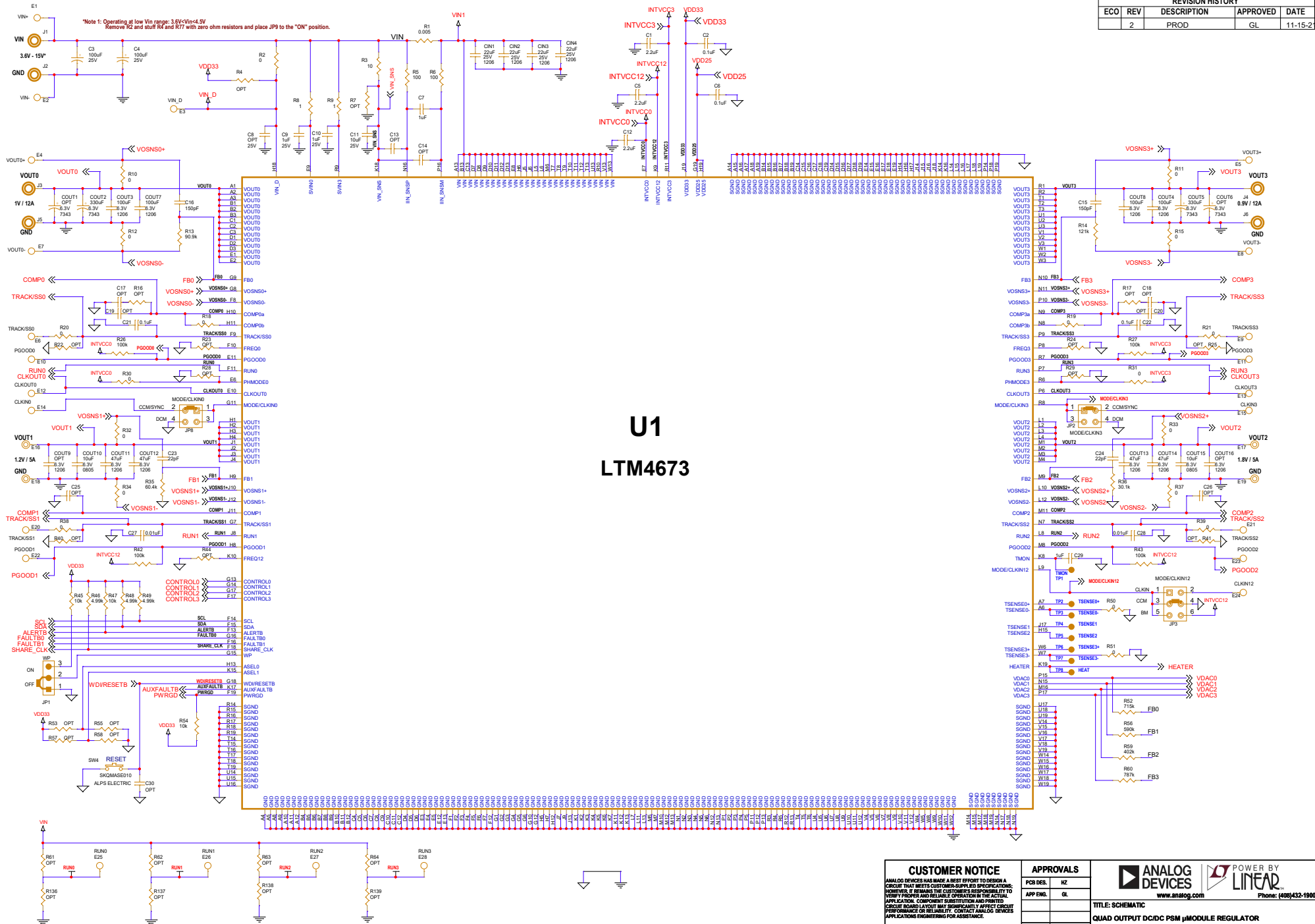
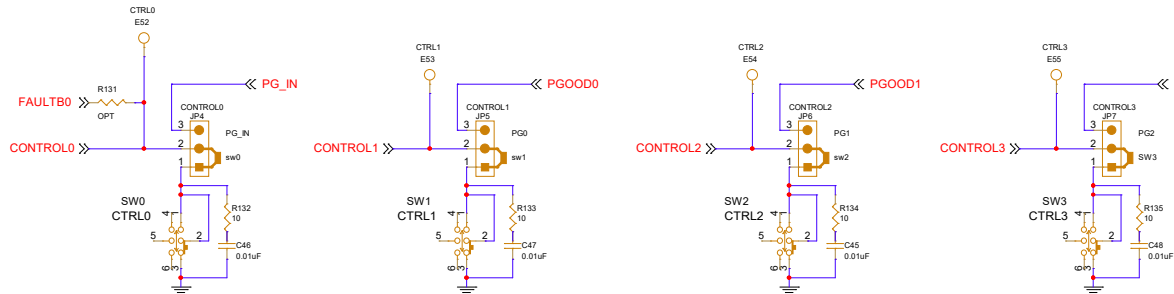
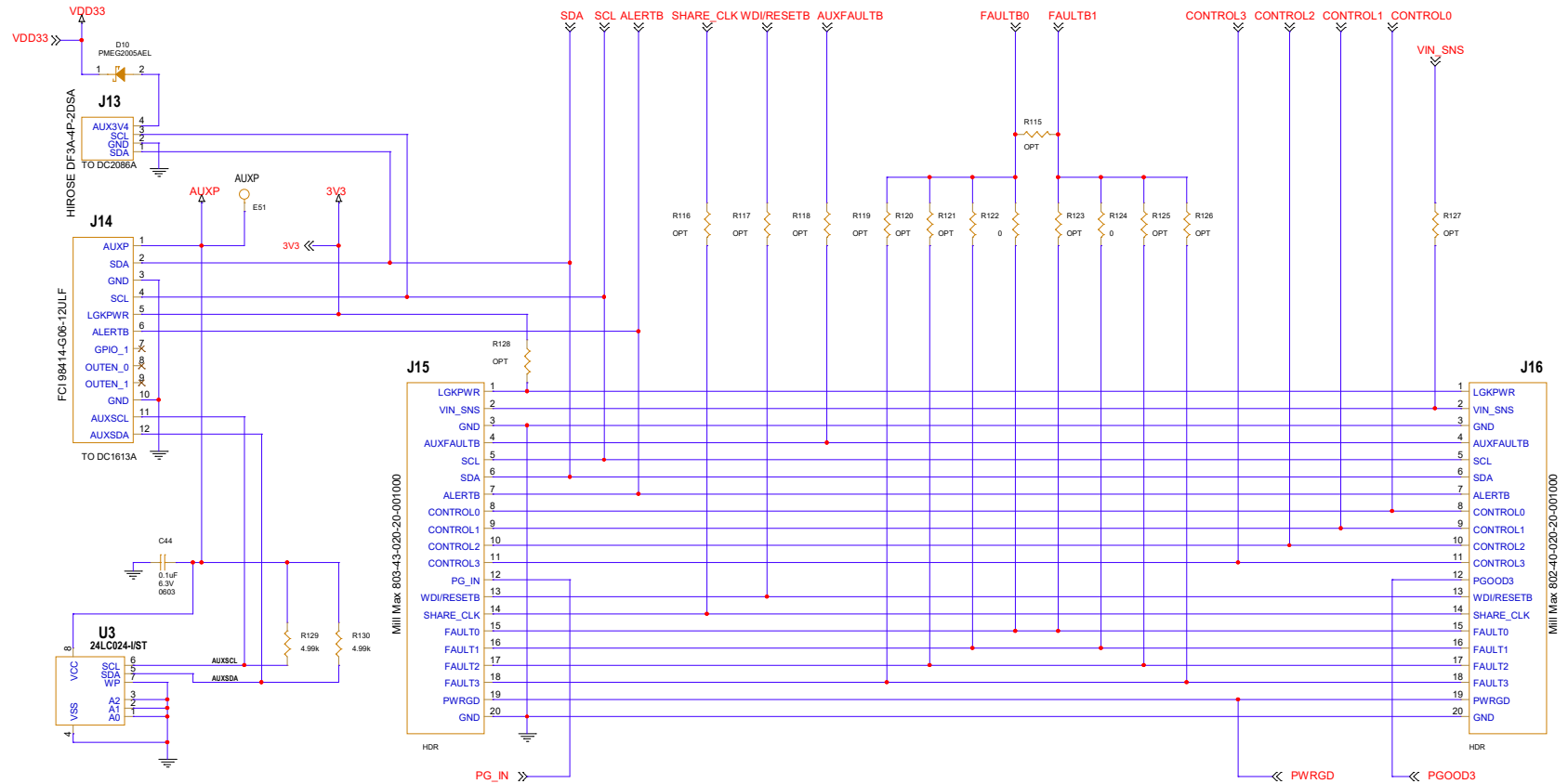


REVISION HISTORY				
ECO	REV	DESCRIPTION	APPROVED	DATE
	2	PROD	GL	11-15-21





*Note: CONTROL0 is used to cascade sequence ON of all channels

PCA ADDITIONAL PARTS

MP1	STANDOFF,NYLON,SNAP-ON,0.25" (6.4mm)
MP2	STANDOFF,NYLON,SNAP-ON,0.25" (6.4mm)
MP3	STANDOFF,NYLON,SNAP-ON,0.25" (6.4mm)
MP4	STANDOFF,NYLON,SNAP-ON,0.25" (6.4mm)
LB1	LABEL SPEC. DEMO BOARD SERIAL NUMBER
PCB1	PCB, DC2810A REV01
STNCL1	TOOL, STENCIL, 700-DC2810A REV01

CUSTOMER NOTICE

ANALOG DEVICES HAS MADE A BEST EFFORT TO DESIGN A CIRCUIT THAT MEETS CUSTOMER-SUPPLIED SPECIFICATIONS; HOWEVER, IT REMAINS THE CUSTOMER'S RESPONSIBILITY TO VERIFY PROPER AND RELIABLE OPERATION IN THE ACTUAL APPLICATION. COMPONENT SUBSTITUTION AND PRINTED CIRCUIT BOARD LAYOUT MAY SIGNIFICANTLY AFFECT CIRCUIT PERFORMANCE OR RELIABILITY. CONTACT ANALOG DEVICES APPLICATIONS ENGINEERING FOR ASSISTANCE.

THIS CIRCUIT IS PROPRIETARY TO ANALOG DEVICES AND SUPPLIED FOR USE WITH ANALOG DEVICES PARTS.

APPROVALS

PCB DES.	HZ
APP ENG.	GL



TITLE: SCHEMATIC	
QUAD OUTPUT DC/DC PSM μ MODULE REGULATOR	
IC NO. LTM4673Y	SCHEMATIC NO. AND REVISION:
SKU NO. DC2810A	DC2810A_REV02
SIZE: N/A	DATE: Tuesday, April 05, 2022
	SHEET 3 OF 3