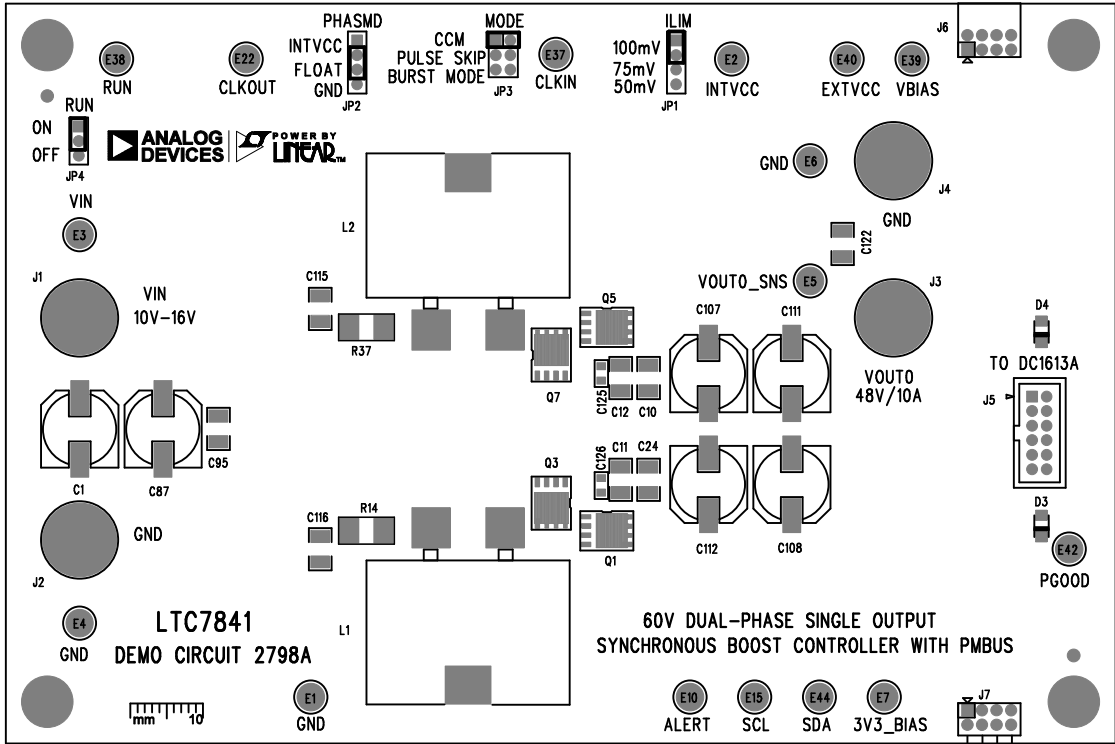


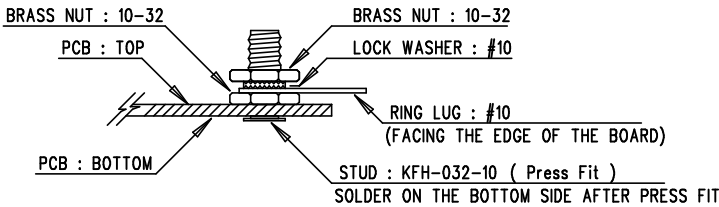
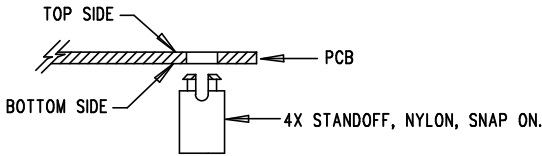
REVISION HISTORY				
ECO	REV	DESCRIPTION	APP. ENG.	DATE
-	2	PRODUCTION	XC	09-20-19





SILKSCREEN TOP

NOTES: UNLESS OTHERWISE SPECIFIED

1. WORKMANSHIP SHALL BE IN ACCORDANCE WITH IPC-A-610.
2. ASSEMBLY PROCESS SHALL INCLUDE: REFLOW SOLDER SIDE SMD. MAXIMUM SOLDER TEMPERATURE IS 240 DEGREES CELSIUS.
3. PARTS TO OMIT WILL BE SPECIFIED ON THE BILL OF MATERIALS. LOCATIONS OF OMITTED PARTS SHALL BE FREE OF SOLDER. MASK THE SOLDER STENCIL WHERE SMT PARTS ARE OMITTED.
4. INSTALL SHUNTS AS SHOWN ON ASSY DRAWING.
5. DEPANELIZE BOARDS AFTER ASSEMBLY AND ROUTE-OUT THE BREAKOUT TABS ON FOUR SIDES OF THE BOARD EDGE.
6. DO NOT APPLY ANY KIND OF ASSEMBLY STAMP OR QA STAMP TO ANY BOARD.
7. INSTALL 4 STANDOFFS AS SHOWN BELOW:



APPROVALS		 ANALOG DEVICES		 POWER BY LINEAR™		www.linear.com	
PCB DES.	LT	FOR ADI CUSTOMER USE ONLY					
APP ENG.	xc	TITLE: TOP ASSEMBLY DRAWING					
		60V DUAL-PHASE SINGLE OUTPUT					
		SYNCHRONOUS BOOST CONTROLLER WITH PMBUS					
		SIZE N/A		IC NO. LTC7841EUHE DC2798A		2	
SCALE = NONE		FILENAME: DC2798A-2.PCB				SHT 1 OF 2	