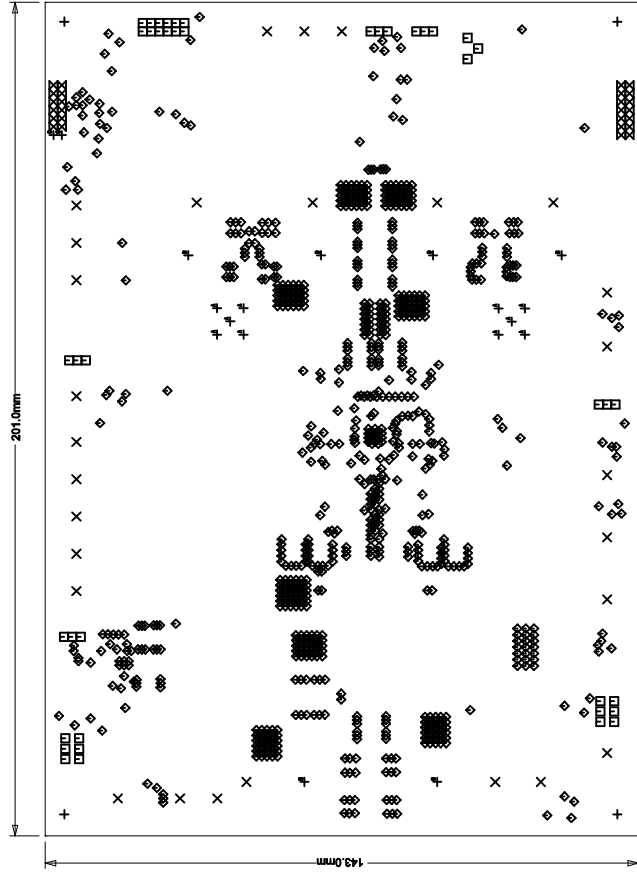
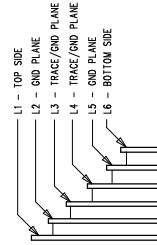


REVISION HISTORY				
ECO	REV	DESCRIPTION	APP. ENG.	DATE
-	2	PRODUCTION	HAORAN W.	11-28-17

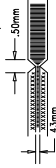


LAYER STRUCTURE




NOTES: UNLESS OTHERWISE SPECIFIED

1. FIBER PER PC-4=400. UNITS IN INCH.
2. MATERIAL:—EPOXY FIBERGLASS, NINE GRADE FR-4
—THICKNESS 16-1/16 mm TOTAL OF 6 LAYERS.
—TOTAL OF 6 LAYERS WITH 2 OZ. CU ON ALL THE LAYERS
—FLEXIBILITY RATING: 94 1/4 MINIMUM.
3. SIZE: CUT TO DIMENSIONS AND TOLERANCES SHOWN AND TOLERANCES TOL: $\pm 0.07mm$
ON ALL ARE PRIMAARY DATUMS.
4. DRILLING:—HOLE HOLES PER SCHEDULE PLATE THROUGH
—HOLE HOLES PER SCHEDULE PLATE THROUGH
—ALL HOLE SIZES ARE SPECIFIED AFTER PLATING.
—HOLE LOCATION TOLERANCES ARE $\pm 0.07mm$
IN RELATION TO CENTER
5. FINISH:—SWAGE USING DR BOTH SIDES, COLOR GREEN.
—COLD IMMERSION BOTH SIDES.
(LEAD FREE SOLDER CAN BE USED FOR PROTOTYPE)
—FOR SILSCREEN BOTH SIDES USE WHITE NON-CONDUCTIVE INK.
6. DO NOT ALTER WORKING E.G. TO ADD LOGO OR DATE CODE.
7. PCB'S ARE TO BE MODIFIED TO MEET END FINISH.
8. PCB'S ARE TO BE ROHS COMPLIANT.
9. SCORING FOR PANELIZED PCB (PRODUCTION ONLY):



SIZE	QTY	SYM	PLATED	TOL
4.699	4	+	NO	+/-0.07
2.4	28	X	YES	+/-0.07
1	42	□	YES	+/-0.07
0.25	831	◇	YES	+/-0.07
0.9398	26	◇	YES	+/-0.07
1.4	10	1A	YES	+/-0.07
4.96	6	1B	YES	+/-0.07
0.8	2	1C	YES	+/-0.07

<div>UNLESS OTHERWISE SPECIFIED DIMENSIONS ARE IN INCHES TOLERANCES ARE: FRACTIONAL 3 PLACE, .015 DECIMAL 3 PLACE, .015 INTERPRET DIM AND TOL. PER ASME Y14.5-1994</div>		APPROVALS		<div>LINEAR TECHNOLOGY</div>	<div>VAPOR CORROSION RESISTANT 316L SS, 304 SS, 6061 ALUMINUM 1/2" DIA. 1/4" DIA. 1/8" DIA. 1/4" DIA. 1/8" DIA. 1/16" DIA. 1/8" DIA. 1/16" DIA. 1/32" DIA.</div>
		PROJ. DES.	INZ.		
		TITLE: FABRICATION DRAWING HIGH VOLTAGE DUAL STEP-DOWN DC/DC CONVERTER CONVERTER WITH POWER SYSTEM MANAGEMENT			
		SIZE: 1/2" X 1/2" X 1/2"	REV. 2		
		DEMOCIRCUIT 2395A	REV. 1		
		SCALE: 1" = 1"	DATE: 10/25/2001	SUIT FOR	2