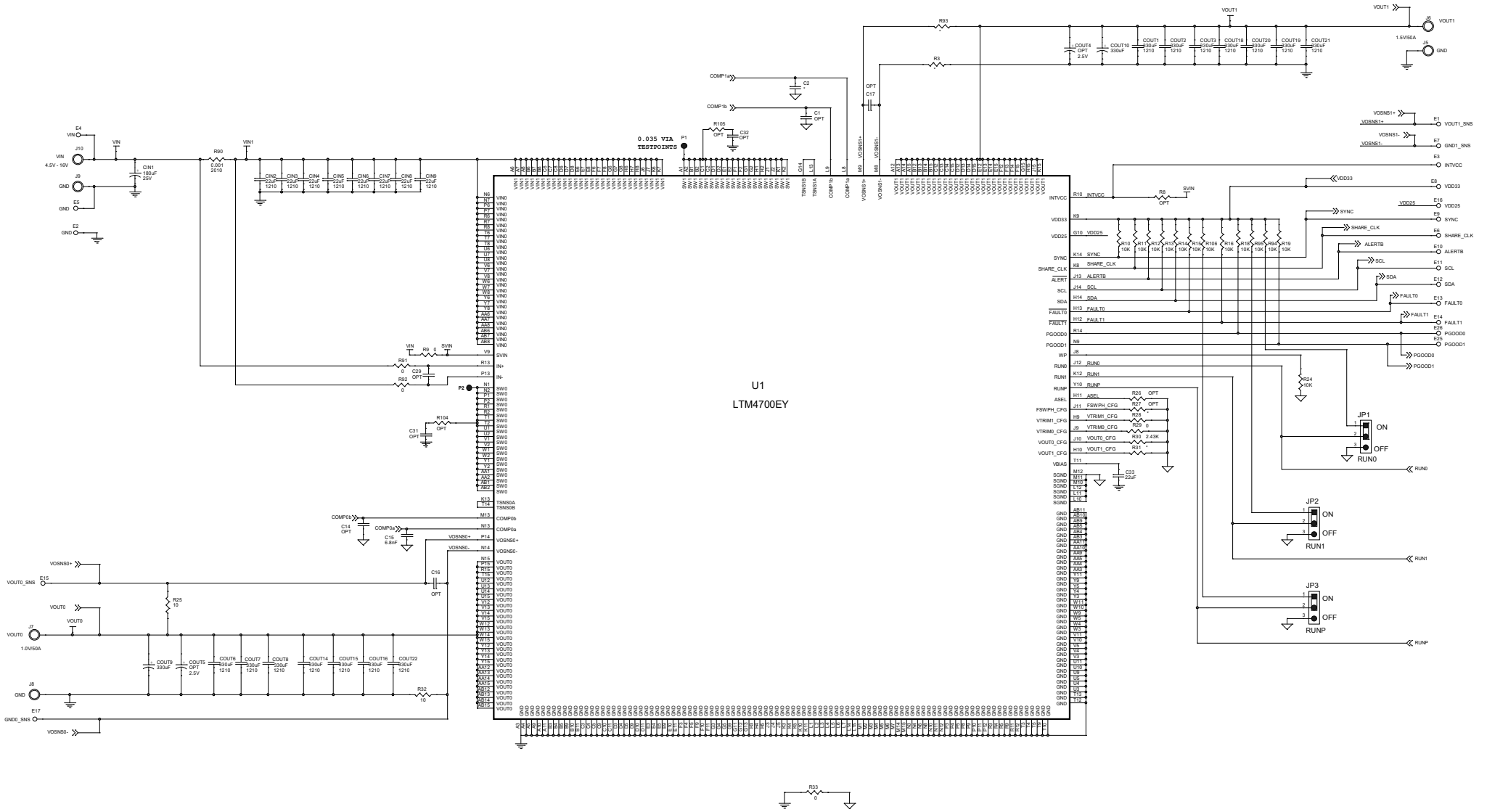




REVISION HISTORY			
ECO	REV	DESCRIPTION	APPROVED DATE
1	1	PRODUCTION	HZ 07-26-21

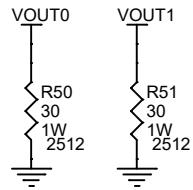


NOTE: UNLESS OTHERWISE SPECIFIED
1. ALL RESISTORS AND CAP ARE 0603.
2. WHEN VIN < 5.75V, SHORT INTVCC TO SVIN WITH R8=0 OHM

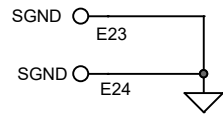
* ASSY	R28,R35,R38,R41,R96,R97,R98,R99	R100,R101,R102,R103	R93, R3	C2	R31
-A	OPT	OPT	10 OHM	6.8nF	4.22K
-B	0 OHM	0 OHM	OPT	OPT	2.43K

CUSTOMER NOTICE		APPROVALS		 
ANALOG DEVICES HAS MADE A GREE EFFORT TO DESIGN A PRODUCT THAT MEETS CUSTOMER SUPPLIED SPECIFICATIONS. HOWEVER, IT REMAINS THE CUSTOMER'S RESPONSIBILITY TO PROVIDE PROPER AND RELIABLE OPERATING IN THE ACTUAL APPLICATION. COMPONENT SUBSTITUTION AND PARTS SOURCE VARIATION MAY AFFECT PRODUCT PERFORMANCE OR RELIABILITY. CONTACT ANALOG DEVICES APPLICATIONS ENGINEERING FOR ASSISTANCE.		PCB DES: LT	LT	
		APP ENG: SG	SG	
TITLE: SCHEMATIC				
DUAL 50A OR SINGLE 100A UMODULE REGULATOR WITH DIGITAL POWER MANAGEMENT				
IC NO. LTM4700EY		SCHEMATIC NO. AND REVISION:		
SKU NO. DC2702B(A,B)		710-DC2702B(A,B)_REV01		
THIS CIRCUIT IS PROPRIETARY TO ANALOG DEVICES AND SUPPLIED FOR USE WITH ANALOG DEVICES PARTS.				
SIZE: NONE		DATE: Friday, July 23, 2021		SHEET 1 OF 3

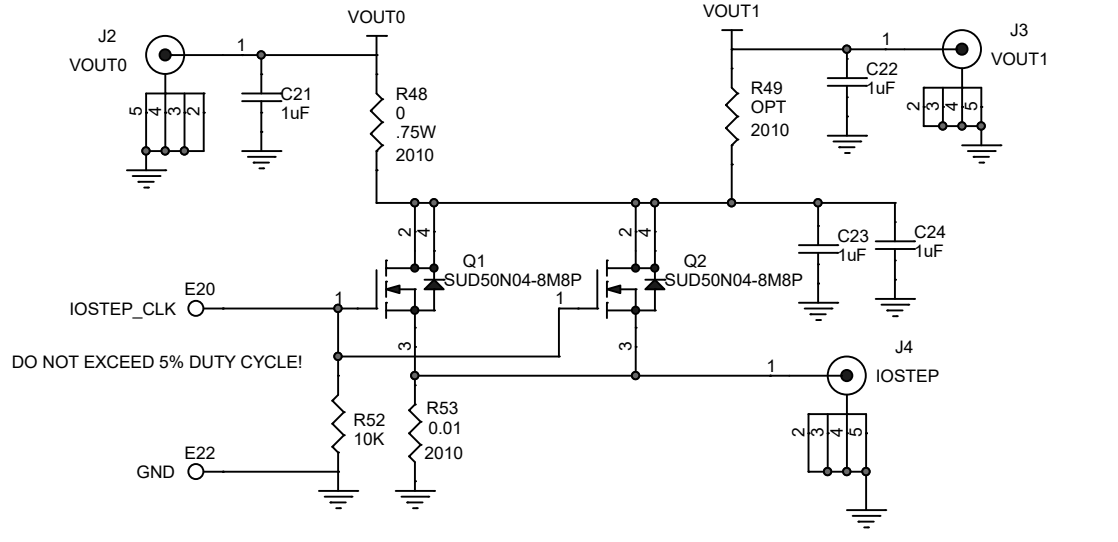
ALL PARTS ON THIS PAGE ARE FOR DEMO ONLY, NOT NEEDED IN CUSTOMER DESIGN



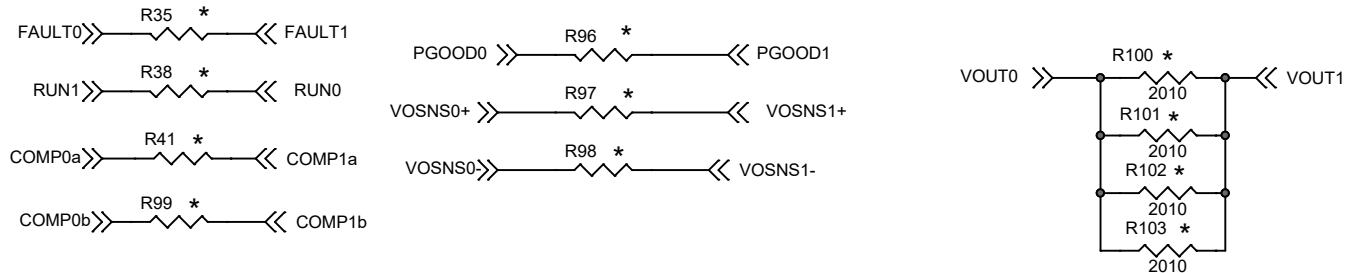
BLEEDER LOADS



DYNAMIC LOAD CIRCUIT



OPTIONAL JUMPER FOR DUAL PHASE SINGLE OUTPUT CONFIGURATION



CUSTOMER NOTICE

ANALOG DEVICES HAS MADE A BEST EFFORT TO DESIGN A CIRCUIT THAT MEETS CUSTOMER-SUPPLIED SPECIFICATIONS; HOWEVER, IT REMAINS THE CUSTOMER'S RESPONSIBILITY TO VERIFY PROPER AND RELIABLE OPERATION IN THE ACTUAL APPLICATION. COMPONENT SUBSTITUTION AND PRINTED CIRCUIT BOARD LAYOUT MAY SIGNIFICANTLY AFFECT CIRCUIT PERFORMANCE OR RELIABILITY. CONTACT ANALOG DEVICES APPLICATIONS ENGINEERING FOR ASSISTANCE.

THIS CIRCUIT IS PROPRIETARY TO ANALOG DEVICES AND SUPPLIED FOR USE WITH ANALOG DEVICES PARTS.

APPROVALS

PCB DES.	LT
APP ENG.	SG



www.analog.com

TITLE: SCHEMATIC
DUAL 50A OR SINGLE 100A μ MODULE REGULATOR
WITH DIGITAL POWER MANAGEMENT

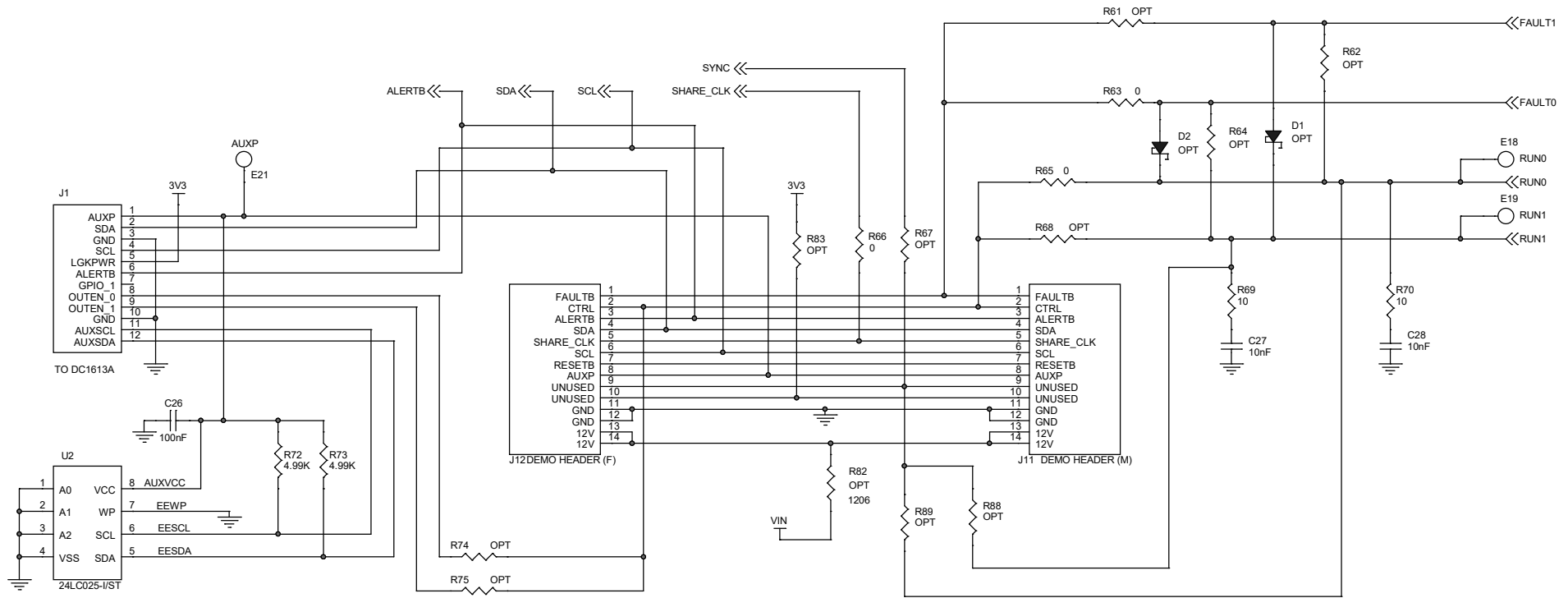
IC NO. LTM4700EY
SKU NO. DC2702B(A,B)

SCHEMATIC NO. AND REVISION:
710-DC2702B(A,B)_REV01

SIZE: NONE DATE: Friday, July 23, 2021

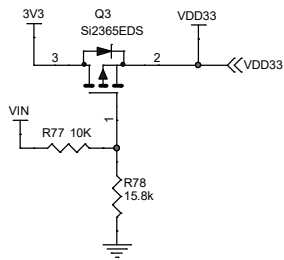
SHEET 2 OF 3

ALL PARTS ON THIS PAGE ARE FOR DEMO BOARD ONLY, NOT NEEDED IN CUSTOMER DESIGN



PSM STACKING CONNECTORS:
J12, FEMALE, CONN RECEPT 2MM DUAL R/A 14POS, Sullins Conn. NPPN072FJFN-RC
J11, MALE, CONN HEADER 14POS 2MM R/A GOLD, Molex Connector Corp. 87760-1416

OPTIONAL CIRCUIT FOR PROGRAMMING
WITHOUT VIN



CUSTOMER NOTICE

ANALOG DEVICES HAS MADE A BEST EFFORT TO DESIGN A CIRCUIT THAT MEETS CUSTOMER-SUPPLIED SPECIFICATIONS; HOWEVER, IT REMAINS THE CUSTOMER'S RESPONSIBILITY TO VERIFY PROPER AND RELIABLE OPERATION IN THE ACTUAL APPLICATION. COMPONENT SUBSTITUTION AND PRINTED CIRCUIT BOARD LAYOUT MAY SIGNIFICANTLY AFFECT CIRCUIT PERFORMANCE OR RELIABILITY. CONTACT ANALOG DEVICES APPLICATIONS ENGINEERING FOR ASSISTANCE.

THIS CIRCUIT IS PROPRIETARY TO ANALOG DEVICES AND SUPPLIED FOR USE WITH ANALOG DEVICES PARTS.

APPROVALS

PCB DES.	LT
APP ENG.	SG



TITLE: SCHEMATIC DUAL 50A OR SINGLE 100A μ MODULE REGULATOR WITH DIGITAL POWER MANAGEMENT	
IC NO. LTM4700EY SKU NO. DC2702B(A,B)	SCHEMATIC NO. AND REVISION: 710-DC2702B(A,B)_REV01
SIZE: NONE	DATE: Friday, July 23, 2021
SHEET 3 OF 3	