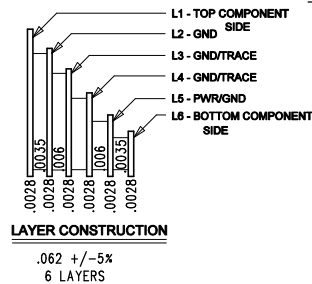
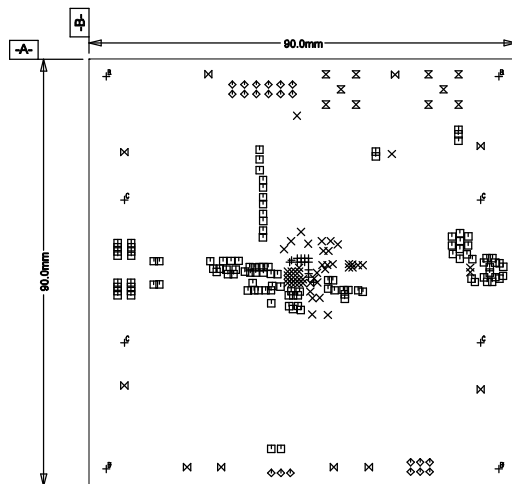


REVISION HISTORY

ECO	REV	DESCRIPTION	DATE	APPROVED
	01	PRODUCTION	10/05/22	S J

ADI CONFIDENTIAL - For Customer Use Only



NOTES: UNLESS OTHERWISE SPECIFIED,

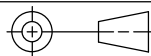
1. ARTWORK P/N DC2685B REV.01
2. FAB PER IPC-A-600
3. PCB SHALL MEET RoHS COMPLIANCE.
4. MATERIAL:
- A. LAMINATE: EPOXY FIBERGLASS, NEMA GRADE FR-4
FLAMMABILITY RATING: 94 V-2 MINIMUM .
- B. THICKNESS: 1.6 +/- 0.1 mm
- C. CLAD: 2 OZ. (50um) ALL LAYERS.
5. FINISH:
- A. COATING: SOLDERMASK OVER BARE COPPER,
COLOR, GREEN LPI.
- B. PLATING: GOLD IMMERSION BOTH SIDES.
- C. SILKSCREEN: BOTH SIDE WITH WHITE
NON-CONDUCTIVE INK.
6. TOLERANCES:
- A. WARPAGE: (0.127mm) MAX. ALONG THE LONGEST
DIAG. AS PER IPC-TM-650 METHOD 2.4.22.
- B. ETCHING: +0.03mm, -0.3mm OF MASTER PATTERN.
- C. REGISTRATION: 0.075mm MAX.
- D. MASK THICKNESS: 0.025mm MIN., 0.075mm MAX.
- E. HOLE PLATING: 22um +/- 3um.
7. SIZE:
- A. CUT TO DIMENSIONS AND TOLERANCES SHOWN.
0.00 ARE PRIMARY DATUMS.
8. HOLE DIAMETERS ARE POST-PLATED SIZES.
9. DEBURR AND BREAK ALL SHARP EDGES.
10. DO NOT ALTER ARTWORK e.g. TO ADD LOGO OR DATE CODE.
11. PLUG ALL VIAS WITH NON-CONDUCTIVE EPOXY AND
PLATE OVER. PLANARIZE FINAL SURFACE.
12. DESIGN HAS SOLDER MASK DEFINED PADS ON U1.
U1 SOLDERMASK SIZE IS 0.35mm AND PAD SIZE IS 0.40mm.
DO NOT CHANGE PAD SIZE OR SOLDER MASK SIZE.

SIZE	QTY	SYM	PLATED	TOL
0.15	14	+	YES	+/-0.08
0.25	48	X	YES	+/-0.08
0.35	115	□	YES	+/-0.08
0.9	21	◇	YES	+/-0.08
1.4	10	⊗	YES	+/-0.13
1.6	10	⊗	YES	+/-0.25
4.75	4	⊖	NO	+/- 0.127
5.21	4	⊖	YES	+/- 0.127

UNLESS OTHERWISE SPECIFIED
DIMENSIONS ARE IN MILLIMETERS
TOLERANCES ON ANGLE $\pm 1^\circ$

XX ± 0.25
XXX ± 0.127

THIRD ANGLE PROJECTION



DO NOT SCALE DRAWING

CONTRACT NO.

APPROVALS	DATE
DRAWN A N	10/05/2
CHECKED	
APPROVED S J	10/05/2
DESIGNED BY	



TITLE
PCB FAB, LTM46XX, 20V STEP-DOWN
μMODULE REGULATOR

SIZE A	CAGE CODE	DWG NO. DC2665B	REV 01
------------------	-----------	---------------------------	------------------

SCALE 1/1	FILENAME: 2005B.PCB	SHEET 1 OF 1
-----------	---------------------	--------------