

REVISION HISTORY

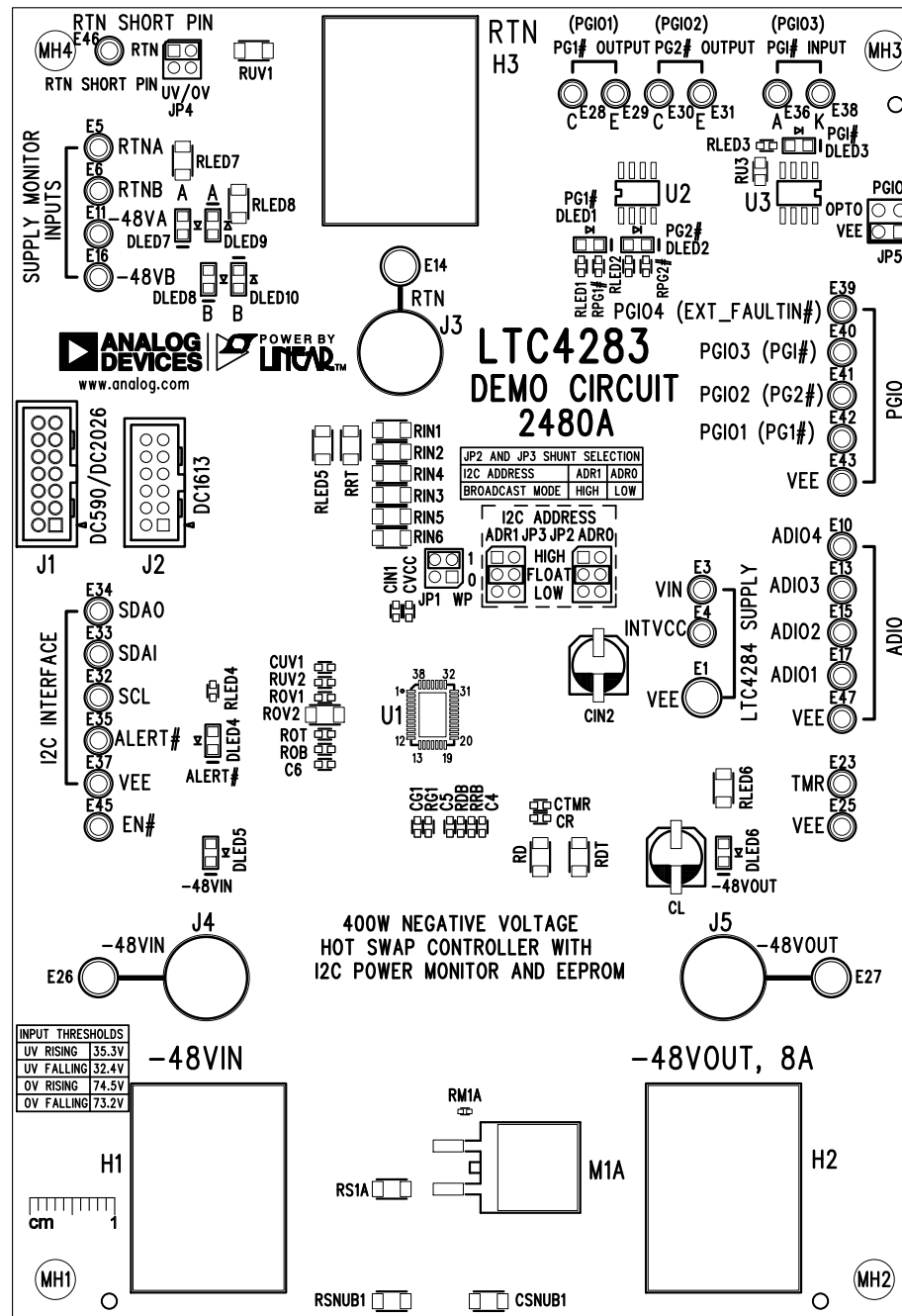
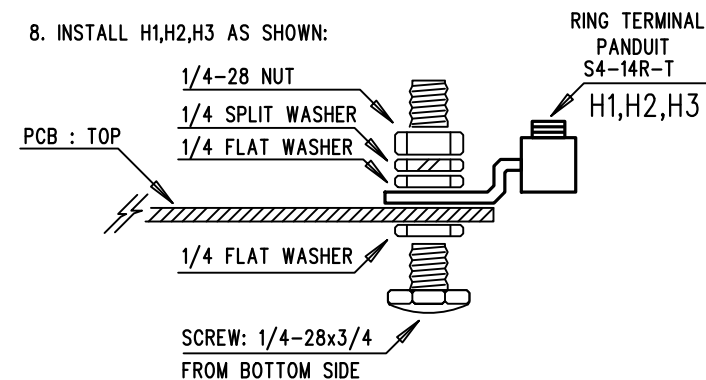
ECO	REV	DESCRIPTION	APP. ENG.	DATE
-	2	2ND PROTOTYPE	MANPREET S.	05-01-19

NOTES: UNLESS OTHERWISE SPECIFIED

1. WORKMANSHIP SHALL BE IN ACCORDANCE WITH IPC-A-610.
2. ASSEMBLY PROCESS SHALL INCLUDE: REFLOW SOLDER TOP SIDE SMD. MAXIMUM SOLDER TEMPERATURE IS 240 DEGREES CELSIUS.
3. PARTS TO OMIT WILL BE SPECIFIED ON THE BILL OF MATERIALS. LOCATIONS OF OMITTED PARTS SHALL BE FREE OF SOLDER. MASK THE SOLDER STENCIL WHERE SMT PARTS ARE OMITTED.
4. INSTALL SHUNTS AS SHOWN.
5. DEPANELIZE BOARDS AFTER ASSEMBLY AND ROUTE-OUT THE BREAKOUT TABS ON FOUR SIDES OF THE BOARD EDGE.
6. DO NOT APPLY ANY KIND OF ASSEMBLY STAMP OR QA STAMP TO ANY BOARD.
7. INSTALL DLED1-DLED8 AS SHOW:





8. INSTALL H1,H2,H3 AS SHOWN:



APPROVALS

PCB DES.	KIM T.
APP ENG.	MANPREET S.
SCALE = NONE	

 ANALOG DEVICES	 POWER BY LINEAR™	1630 MCCARTHY BLVD. MILPITAS, CA 95035 TEL: (408)432-1900
www.analog.com	www.linear.com	
TITLE: TOP ASSEMBLY DRAWING		
400W NEGATIVE VOLTAGE HOT SWAP CONTROLLER WITH I2C POWER MONITOR AND EEPROM		
SIZE N/A	IC NO. LTC4283IUHF DEMO CIRCUIT 2480A	REV. 2
FILENAME: DC2480A-2.PCB		SHT 1 OF 2