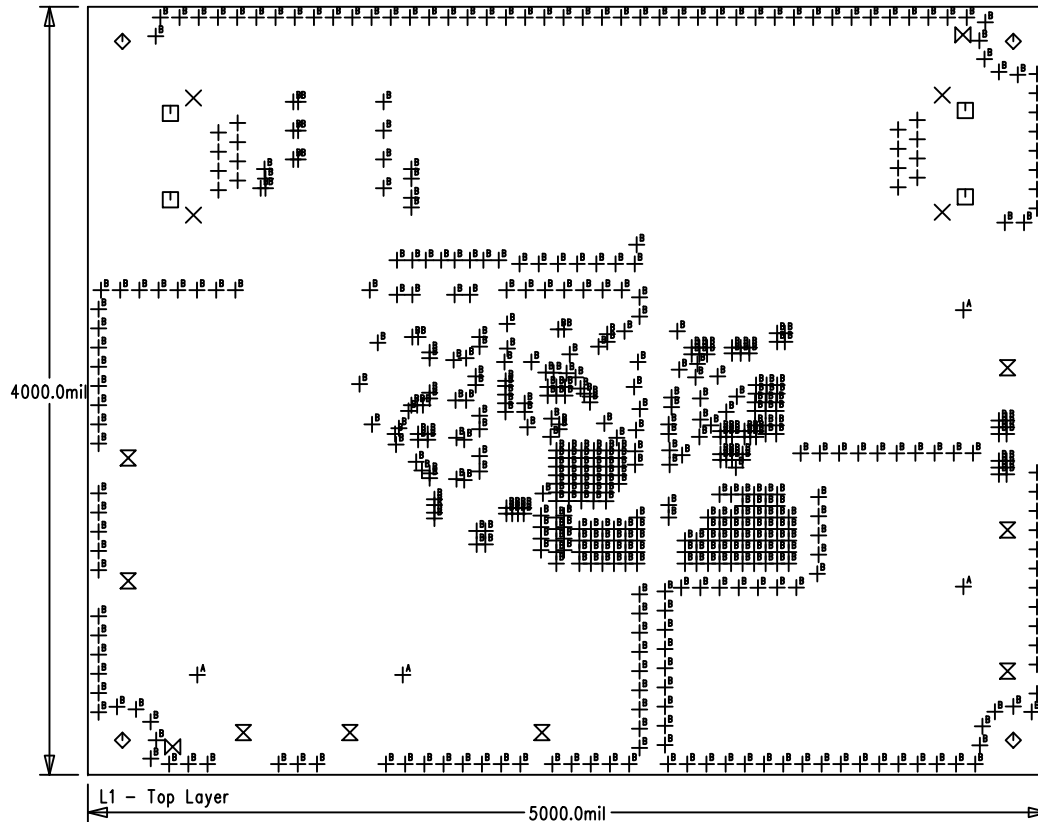


SHOWN FROM TOP SIDE

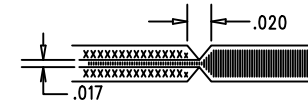


| SIZE | QTY | SYM | PLATED | TOL |
|------|-----|----------------|--------|--------|
| 36 | 16 | + | YES | +/-0.0 |
| 62 | 4 | X | YES | +/-0.0 |
| 128 | 4 | □ | NO | +/-0.0 |
| 188 | 4 | ◇ | YES | +/-0.0 |
| 94 | 8 | ⊗ | YES | +/-0.0 |
| 70 | 2 | ⊗ | NO | +/-0.0 |
| 205 | 4 | + ^A | YES | +/-0.0 |
| 10 | 554 | + ^B | YES | +/-0.0 |

| REVISION HISTORY | | | | |
|------------------|-----|-------------|-----------|---------|
| ECO | REV | DESCRIPTION | APP. ENG. | DATE |
| - | 1 | PRODUCTION | KAUNG H. | 8-29-16 |

NOTES: UNLESS OTHERWISE SPECIFIED


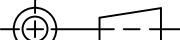
- FAB PER IPC-A-600.
- MATERIAL: -LEAD FREE ASSEMBLY COMPLIANT, ISOLA FR-370HR OR EQUIVALENT.
-FINISHED THICKNESS TO BE 0.062" +/- .005"
-TOTAL OF 6 LAYERS WITH 2 OZ. CU ON THE OUTER LAYERS AND 1 OZ. CU ON THE INNER LAYERS.
-FLAMMABILITY RATING: 94 V-0 MINIMUM.
- SIZE: CUT TO DIMENSIONS AND TOLERANCES SHOWN.
0.00" ARE PRIMARY DATUMS.
- DRILLING: -DRILL HOLES PER SCHEDULE. PLATE THROUGH HOLES WITH COPPER, 0.001" THICK MIN.
-ALL HOLE SIZES ARE SPECIFIED AFTER PLATING.
-HOLE LOCATION TOLERANCES ARE +/-0.003" IN RELATION TO CENTER
- FINISH: -SMOBC USING LPI BOTH SIDES, COLOR GREEN.
-GOLD IMMERSION BOTH SIDES.
-FOR SILKSCREENS: USE WHITE NON-CONDUCTIVE INK.
- DO NOT ALTER ARTWORK e.g. TO ADD LOGO OR DATE CODE.
PAD SIZE CAN BE MODIFIED TO MEET END FINISH.
- PCBS ARE TO BE RoHS COMPLIANT.
- SCORING FOR PANELIZED PCB (PRODUCTION FAB ONLY):



9. CONTROLLED DIELECTRIC FOR ALL LAYERS

LAYER STRUCTURE

| | |
|--|------------|
| .0027" | L1-TOP |
| .009" +/- 10%" | |
| .00135" | L2-GND1 |
| .014" +/- 10%" | |
| .00135" | L3-SIGNAL1 |
| .062" FINISHED 6 LAYERS .009" +/- 10%" | |
| .00135" | L4-SIGNAL2 |
| .014" +/- 10%" | |
| .00135" | L5-GND2 |
| .009" +/- 10%" | |
| .0027" | L6-BOTTOM |

| | | | | | | | |
|---|--|-------------------------|----------|--|--|---|-----|
| UNLESS OTHERWISE SPECIFIED | | APPROVALS | |  LINEAR TECHNOLOGY | | 1630 MCCARTHY BLVD MILPITAS, CA 95035 PH: (408)432-1900 www.linear.com LTC CONFIDENTIAL- FOR CUSTOMER USE ONLY | |
| DIMENSIONS ARE IN INCHES TOLERANCES: 0.XX" = ±0.01" 0.XXX" = ±0.005" | | PCB DES. | KAUNG H. | | | TITLE: FABRICATION DRAWING HIGH EFFICIENCY IEEE 802.3bt (TYPE 4) PD WITH FLYBACK DC-DC CONVERTER AND AUXILIARY POWER INPUT | |
| INTERPRET DIM AND TOL PER ASME Y14.5M-1994 THIRD ANGLE PROJECTION | | APP ENG. | KAUNG H. | SIZE | | IC NO. | REV |
|  | | | | N/A | | LT4295IUF | 1 |
| | | | | DEMO CIRCUIT 2476A | | | |
| | | | | | | | |
| SCALE = NONE | | FILENAME: DC2476A-1.PCB | | | | SHT 1 OF 1 | |

