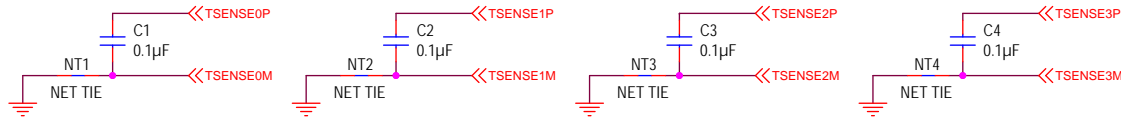
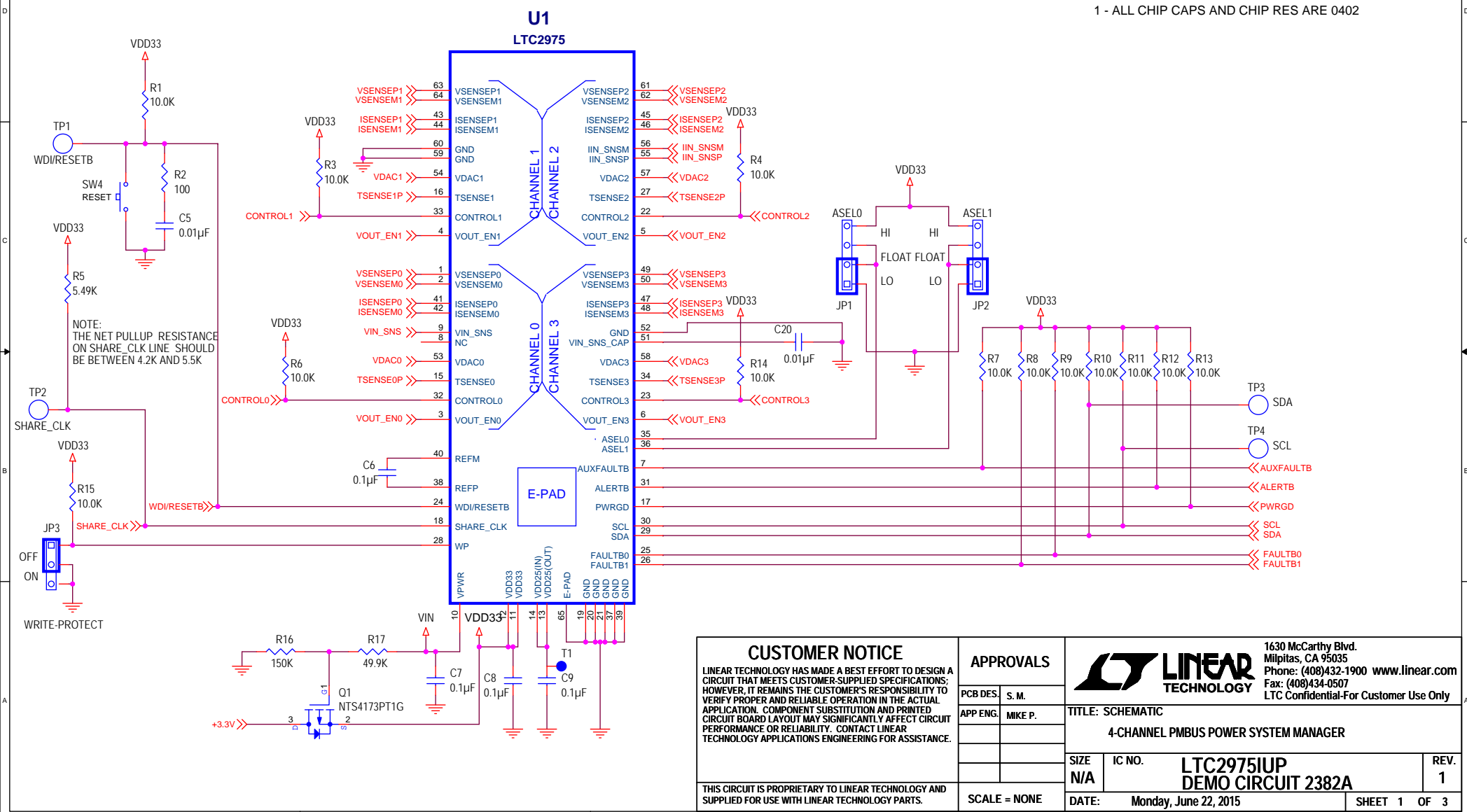


NOTE:  
MAKE ALL TSENSE  
TRACES SHIELDED  
AND DIFFERENTIAL  
PLACE CAPS  
AND GND CONNECTIONS  
CAPS NEAR LTC2975



REVISION HISTORY				
ECO	REV	DESCRIPTION	APPROVED	DATE
—	1	PROTOTYPE	MICHAEL P.	05-18-15

NOTES - UNLESS OTHERWISE SPECIFIED:  
1 - ALL CHIP CAPS AND CHIP RES ARE 0402



**CUSTOMER NOTICE**  
LINEAR TECHNOLOGY HAS MADE A BEST EFFORT TO DESIGN A CIRCUIT THAT MEETS CUSTOMER-SUPPLIED SPECIFICATIONS; HOWEVER, IT REMAINS THE CUSTOMER'S RESPONSIBILITY TO VERIFY PROPER AND RELIABLE OPERATION IN THE ACTUAL APPLICATION. COMPONENT SUBSTITUTION AND PRINTED CIRCUIT BOARD LAYOUT MAY SIGNIFICANTLY AFFECT CIRCUIT PERFORMANCE OR RELIABILITY. CONTACT LINEAR TECHNOLOGY APPLICATIONS ENGINEERING FOR ASSISTANCE.

THIS CIRCUIT IS PROPRIETARY TO LINEAR TECHNOLOGY AND SUPPLIED FOR USE WITH LINEAR TECHNOLOGY PARTS.

#### APPROVALS

PCB DES.	S. M.
APP ENG.	MIKE P.

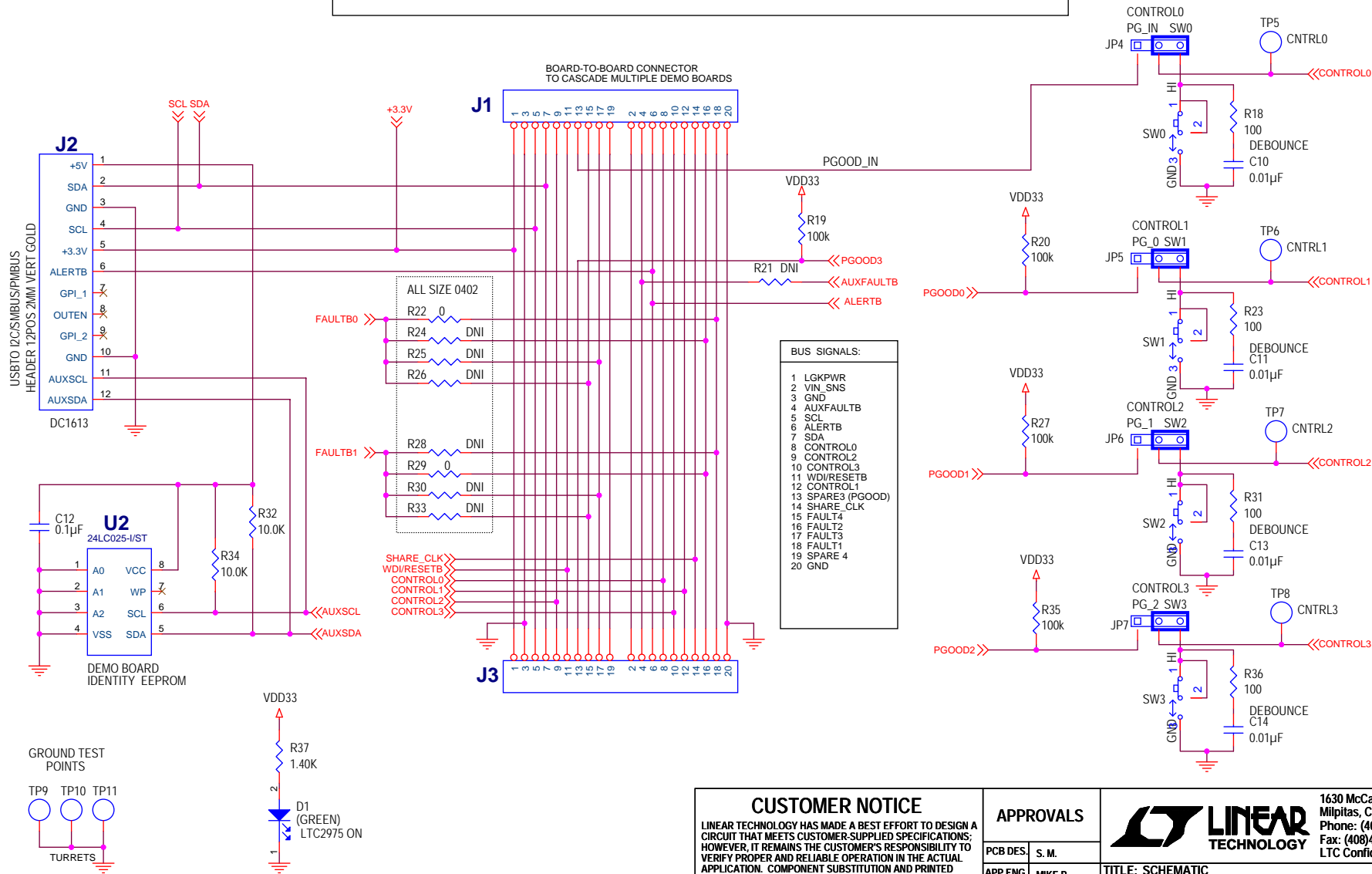
SCALE = NONE



1630 McCarthy Blvd.  
Milpitas, CA 95035  
Phone: (408)432-1900 www.linear.com  
Fax: (408)434-0507  
LTC Confidential-For Customer Use Only

TITLE: SCHEMATIC			
4-CHANNEL PMBUS POWER SYSTEM MANAGER			
SIZE N/A	IC NO.	LTC2975IUP DEMO CIRCUIT 2382A	REV. 1
DATE: Monday, June 22 2015		SHEET 1	OF 3

ALL PARTS ON THIS PAGE ARE FOR DEMO ONLY, NOT NEEDED IN CUSTOMER DESIGN



### CUSTOMER NOTICE

LINEAR TECHNOLOGY HAS MADE A BEST EFFORT TO DESIGN A CIRCUIT THAT MEETS CUSTOMER-SUPPLIED SPECIFICATIONS; HOWEVER, IT REMAINS THE CUSTOMER'S RESPONSIBILITY TO VERIFY PROPER AND RELIABLE OPERATION IN THE ACTUAL APPLICATION. COMPONENT SUBSTITUTION AND PRINTED CIRCUIT BOARD LAYOUT MAY SIGNIFICANTLY AFFECT CIRCUIT PERFORMANCE OR RELIABILITY. CONTACT LINEAR TECHNOLOGY APPLICATIONS ENGINEERING FOR ASSISTANCE.

THIS CIRCUIT IS PROPRIETARY TO LINEAR TECHNOLOGY AND SUPPLIED FOR USE WITH LINEAR TECHNOLOGY PARTS.

### APPROVALS

PCB DES. S. M.

APP ENG. MIKE P.

SCALE = NONE



1630 McCarthy Blvd.  
Milpitas, CA 95035  
Phone: (408)432-1900 www.linear.com  
Fax: (408)434-0507  
LTC Confidential-For Customer Use Only

TITLE: SCHEMATIC  
4-CHANNEL PMBUS POWER SYSTEM MANAGER

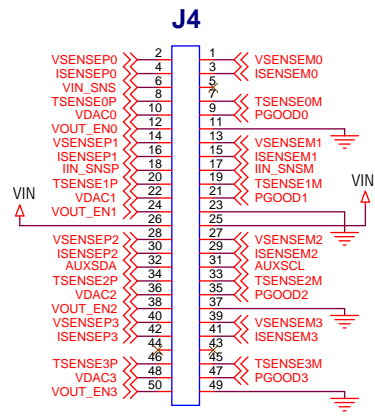
SIZE N/A IC NO. LTC2975IUP  
DEMO CIRCUIT 2382A

REV.  
1

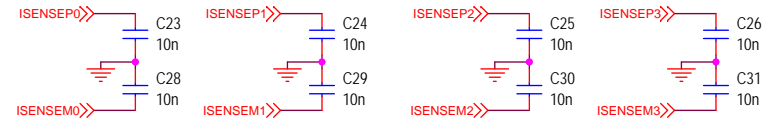
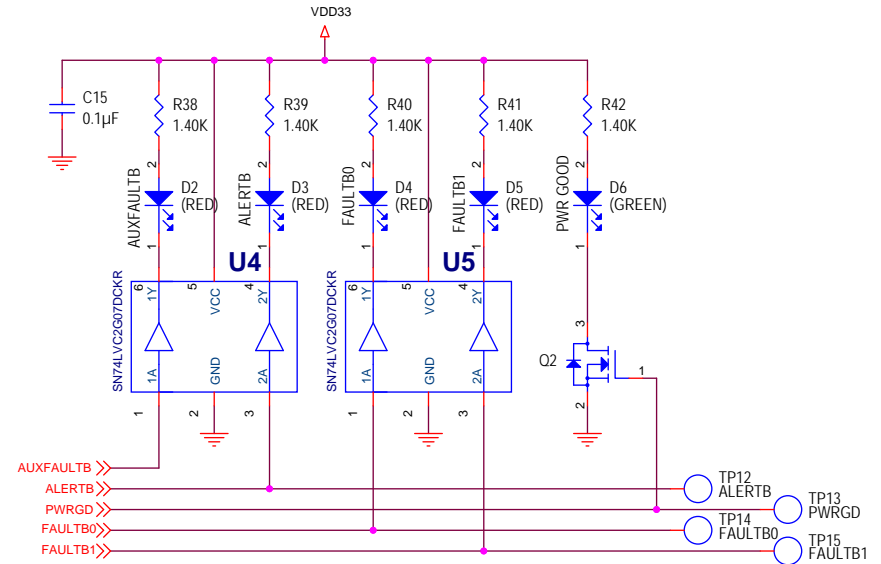
DATE: Monday, June 22, 2015

SHEET 2 OF 3


ALL PARTS ON THIS PAGE ARE FOR DEMO ONLY, NOT NEEDED IN CUSTOMER DESIGN



BOARD TO BOARD  
CONNECTOR  
MATES WITH DC2363A



INPUT FILTERS FOR CURRENT SENSING  
PLACE CLOSE TO LTC2975

<div>CUSTOMER NOTICE</div> <div>LINEAR TECHNOLOGY HAS MADE A BEST EFFORT TO DESIGN A CIRCUIT THAT MEETS CUSTOMER-SUPPLIED SPECIFICATIONS; HOWEVER, IT REMAINS THE CUSTOMER'S RESPONSIBILITY TO VERIFY PROPER AND RELIABLE OPERATION IN THE ACTUAL APPLICATION. COMPONENT SUBSTITUTION AND PRINTED CIRCUIT BOARD LAYOUT MAY SIGNIFICANTLY AFFECT CIRCUIT PERFORMANCE OR RELIABILITY. CONTACT LINEAR TECHNOLOGY APPLICATIONS ENGINEERING FOR ASSISTANCE.</div>		<div>APPROVALS</div> <div>PCB DES. S. M.</div> <div>APP ENG. MIKE P.</div> <div></div> <div></div> <div></div>		<div> <b>LINEAR TECHNOLOGY</b></div> <div>1630 McCarthy Blvd. Milpitas, CA 95035 Phone: (408)432-1900 <a href="http://www.linear.com">www.linear.com</a> Fax: (408)434-0507 LTC Confidential-For Customer Use Only</div>	
<div>THIS CIRCUIT IS PROPRIETARY TO LINEAR TECHNOLOGY AND SUPPLIED FOR USE WITH LINEAR TECHNOLOGY PARTS.</div>		<div>SCALE = NONE</div>		<div>TITLE: SCHEMATIC</div> <div>4-CHANNEL PMBUS POWER SYSTEM MANAGER</div>	
				<div>SIZE IC NO. <b>LTC2975IUP</b> REV. <b>1</b></div> <div><b>DEMO CIRCUIT 2382A</b></div>	
				<div>DATE: Monday, June 22, 2015</div> <div>SHEET 3 OF 3</div>	