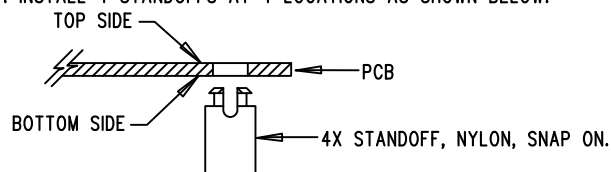


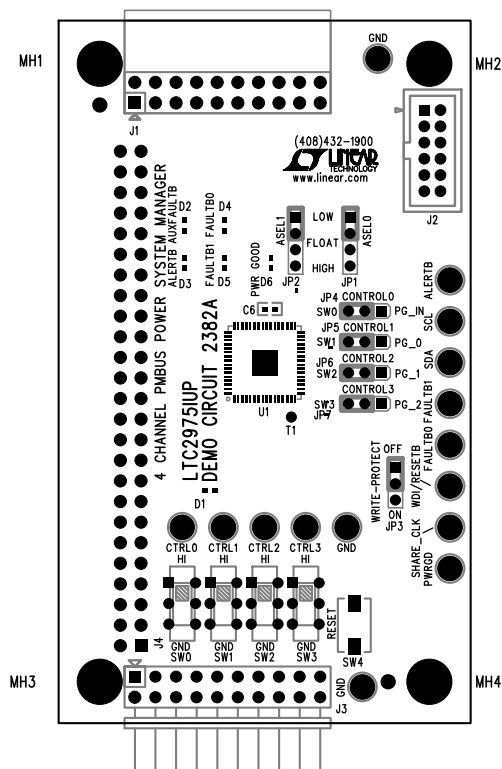
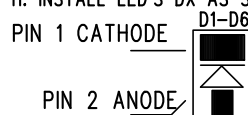
REVISION HISTORY				
ECO	REV	DESCRIPTION	DATE	APP. ENG.
-	1	1ST PROTOTYPE	05-18-2015	MIKE P.


### NOTES: UNLESS OTHERWISE SPECIFIED

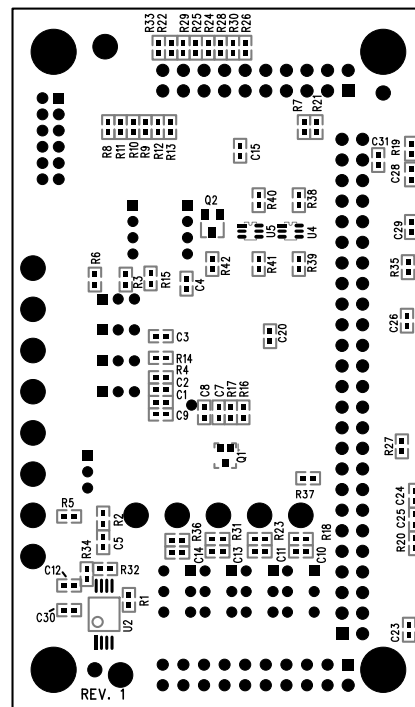
1. WORKMANSHIP SHALL BE IN ACCORDANCE WITH IPC-A-610.
2. ASSEMBLY PROCESS SHALL INCLUDE: REFLOW SOLDER TOP SIDE SMD. MAXIMUM SOLDER TEMPERATURE IS 240 DEGREES CELSIUS.
3. PARTS TO OMIT WILL BE SPECIFIED ON THE BILL OF MATERIALS. LOCATIONS OF OMITTED PARTS SHALL BE FREE OF SOLDER. MASK THE SOLDER STENCIL WHERE SMT PARTS ARE OMITTED.
4. INSTALL SHUNTS AS SHOWN ON ASSY DRAWING.
5. DEPANELIZE BOARDS AFTER ASSEMBLY AND ROUTE-OUT THE BREAKOUT TABS ON FOUR SIDES OF THE BOARD EDGE.
6. DO NOT APPLY ANY KIND OF ASSEMBLY STAMP OR QA STAMP TO ANY BOARD.
7. INSTALL 4 STANDOFFS AT 4 LOCATIONS AS SHOWN BELOW:




9. INSTALL SHUNTS AS SHOWN WITH THIS SYMBOL
10. SET SWITCHES TO DEFAULT SETTINGS SHOWN WITH THIS SYMBOL
11. INSTALL LED'S DX AS SHOWN BELOW:

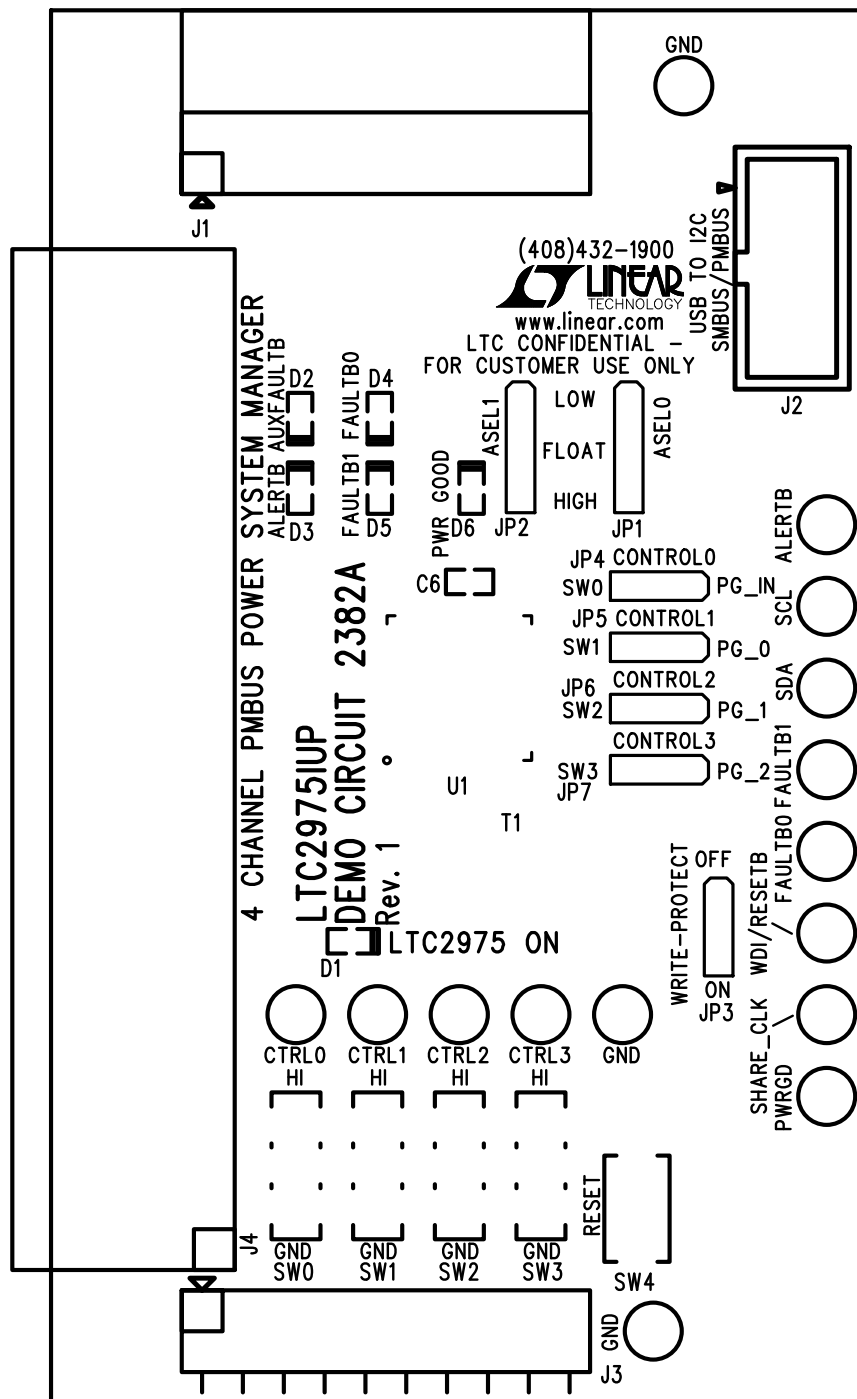


APPROVALS		 <div> 1630 MCCARTHY BLVD  MILPITAS, CA 95035  PH: (408)432-1900  www.linear.com  LTC CONFIDENTIAL-  FOR CUSTOMER USE ONLY </div>		
PCB DES.	S. M.			
APP ENG.	MIKE P.			
		TITLE: TOP ASSEMBLY DRAWING 4 CHANNEL POWER SYSTEM MANAGER		
		SIZE N/A	IC NO. LTC2975IUP DEMO CIRCUIT 2382A	REV. 1
SCALE = NONE		FILENAME: DC2382.PCB		SHT 1 OF 2



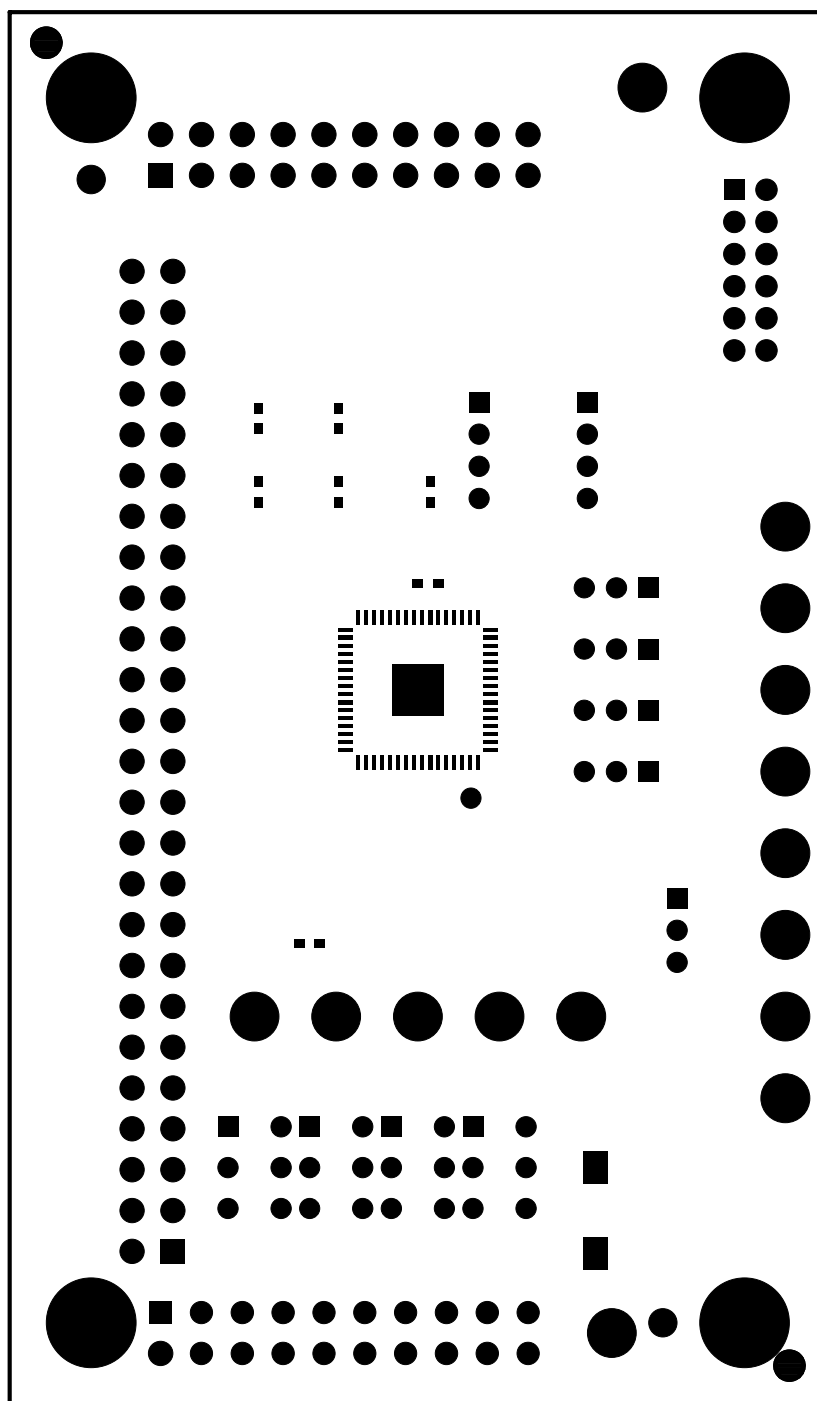
APPROVALS		 <b>LINEAR TECHNOLOGY</b> 1630 MCCARTHY BLVD MILPITAS, CA 95035 PH: (408)432-1900 <a href="http://www.linear.com">www.linear.com</a> LTC CONFIDENTIAL- FOR CUSTOMER USE ONLY	
PCB DES.	S. M.		
APP ENG.	MIKE P.	TITLE: BOTTOM ASSEMBLY DRAWING 4 CHANNEL POWER SYSTEM MANAGER	
		SIZE	REV.
		N/A	1
SCALE = NONE		IC NO. LTC2975IUP DEMO CIRCUIT 2382A FILENAME: DC2382.PCB SHT 2 OF 2	





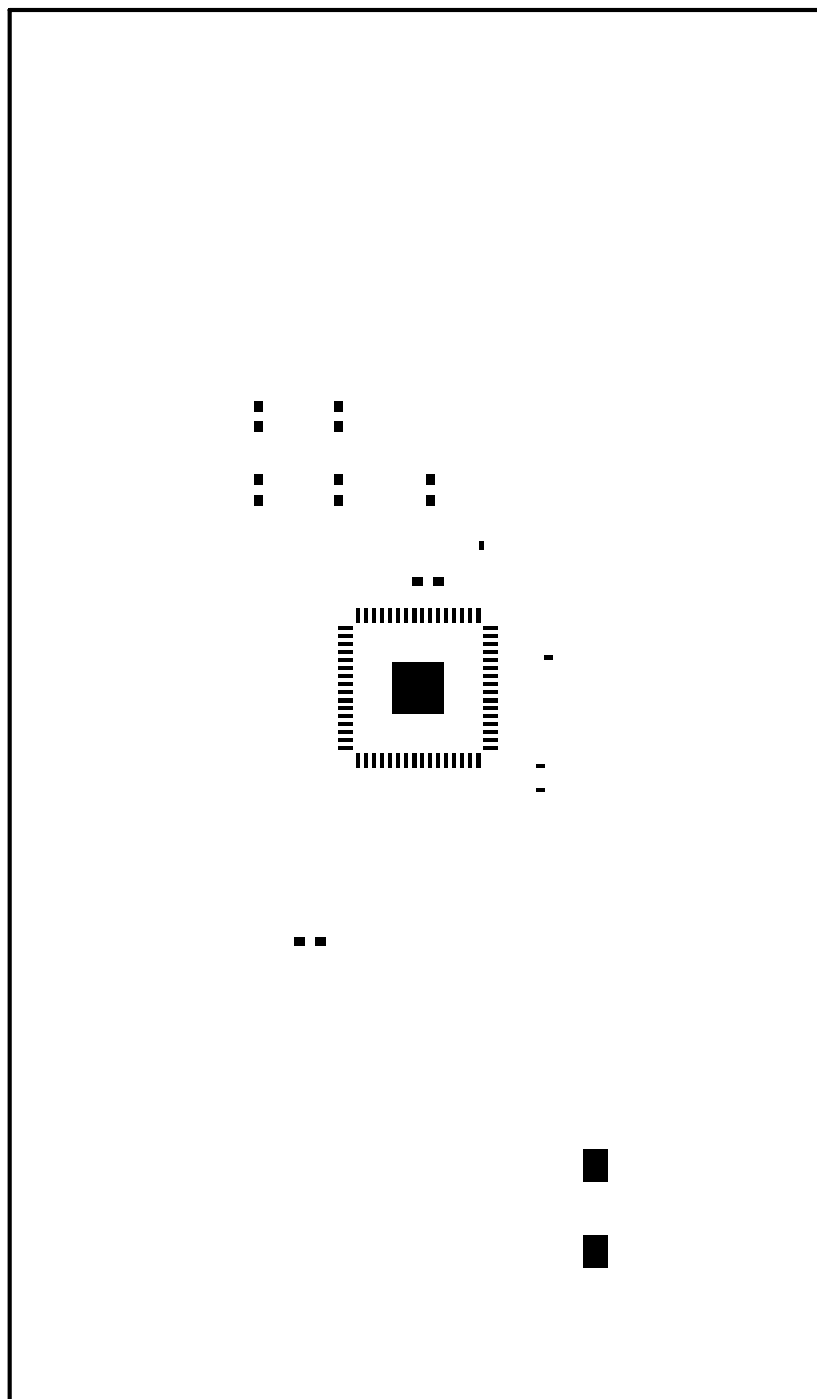
TOP SILKSCREEN  
 LINEAR TECHNOLOGY  
 DC2382A LTC2975IUP  
 4 CHANNEL POWER SYSTEM MANAGER

DATE: 05-18-15



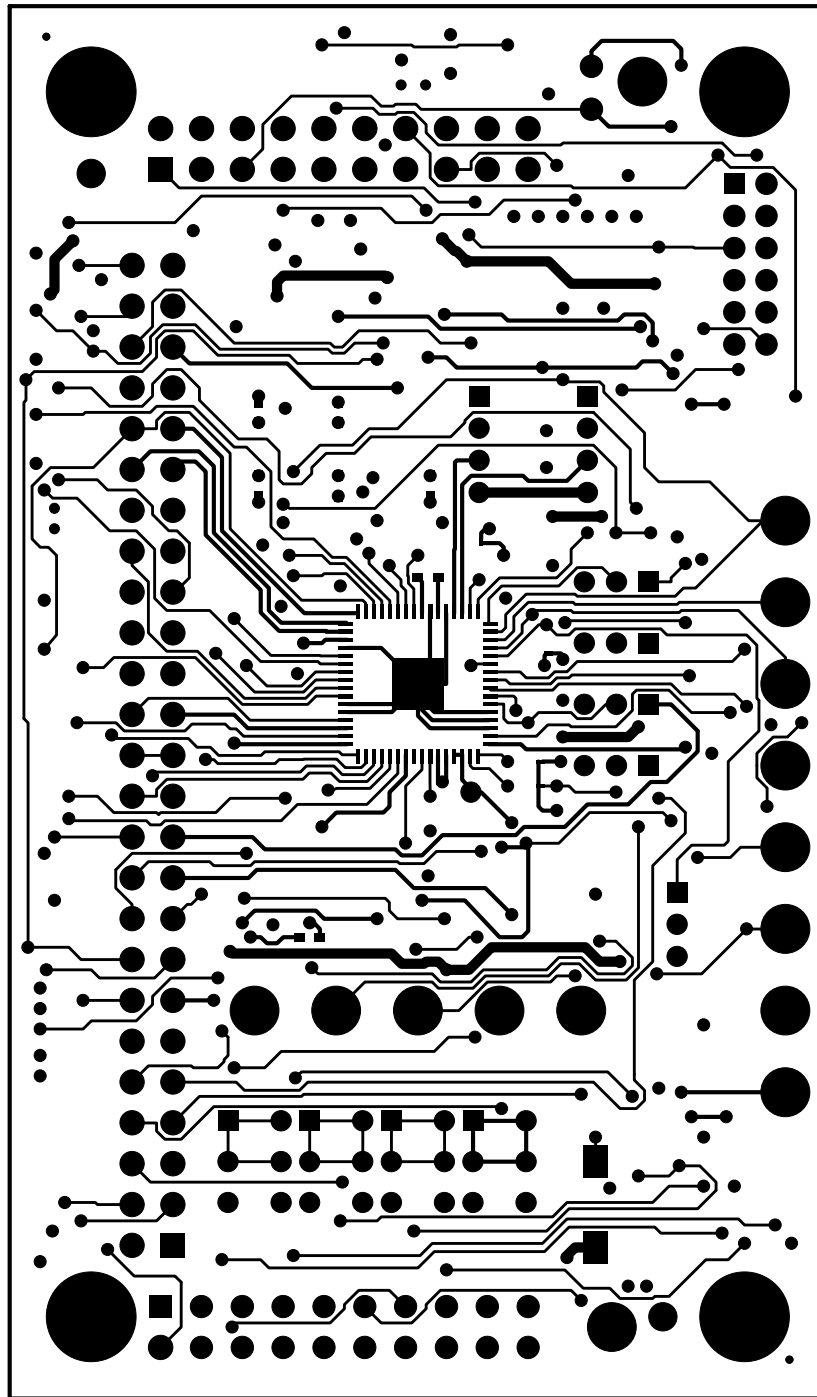
TOP SOLDER MASK  
LINEAR TECHNOLOGY  
DC2382A LTC2975IUP  
4 CHANNEL POWER SYSTEM MANAGER

DATE: 05-18-15



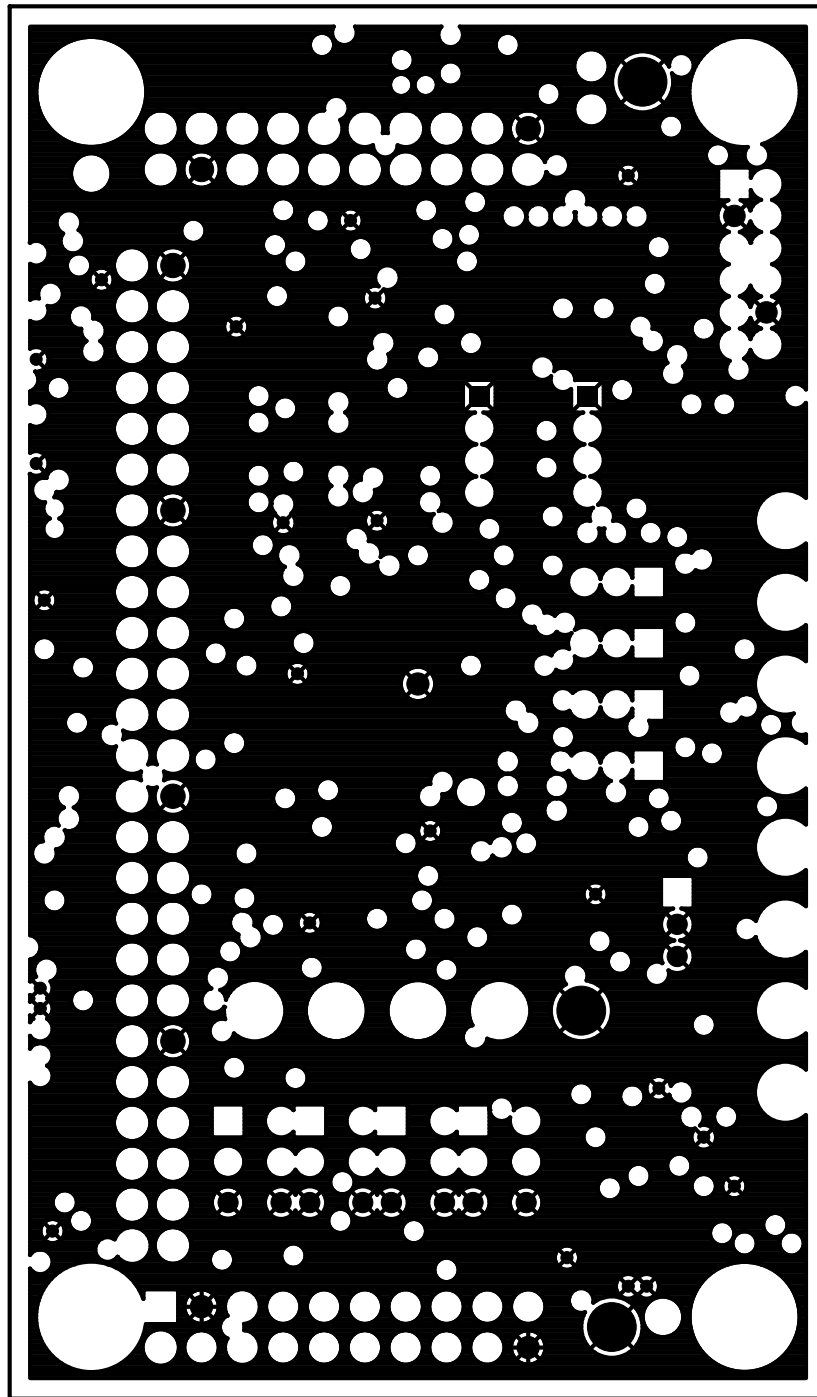
TOP SOLDER PASTE  
LINEAR TECHNOLOGY  
DC2382A LTC2975IUP  
4 CHANNEL POWER SYSTEM MANAGER

DATE: 05-18-15



LAYER 1 – TOP LAYER  
LINEAR TECHNOLOGY  
DC2382A LTC2975IUP  
4 CHANNEL POWER SYSTEM MANAGER

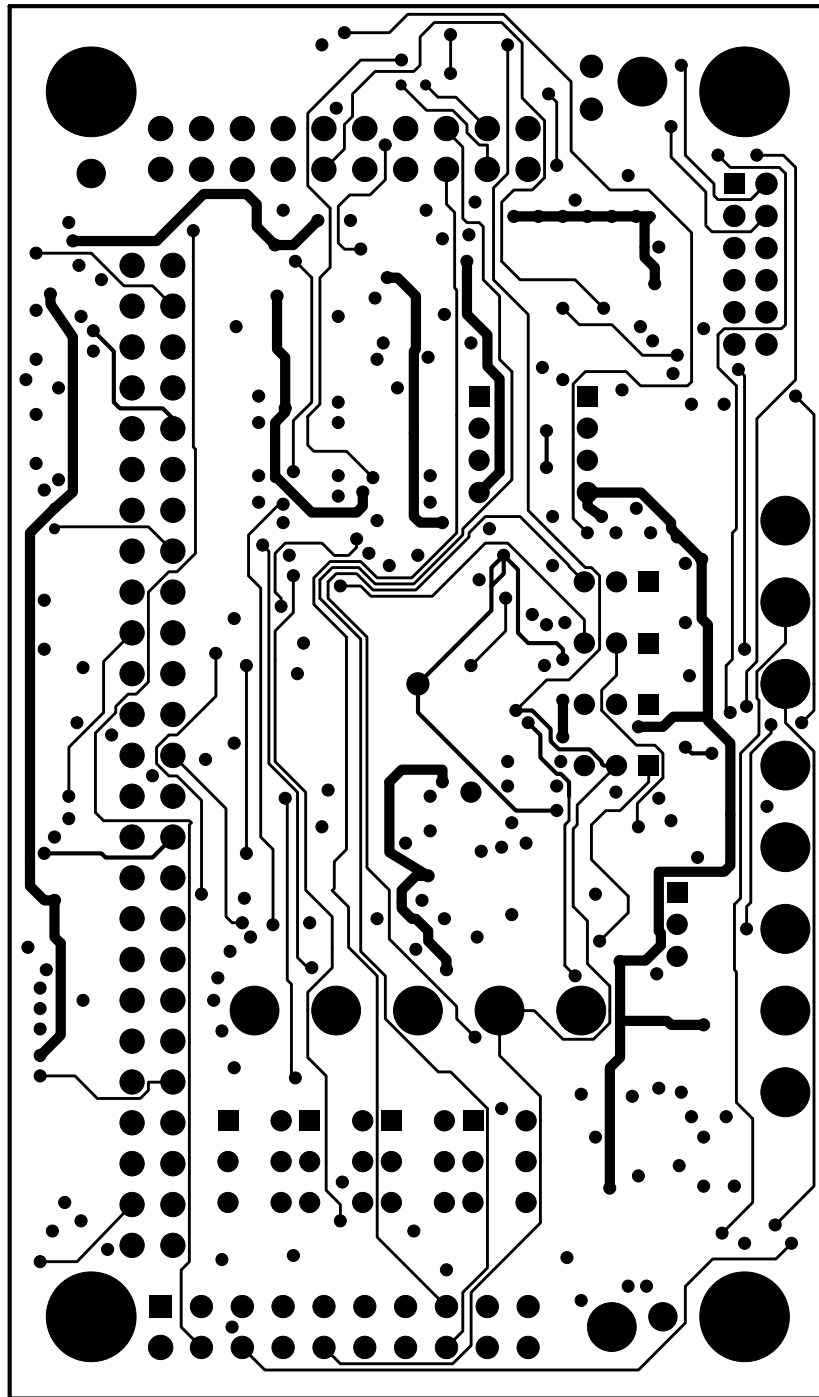
DATE: 05-18-15



LAYER 2 - GND PLANE  
LINEAR TECHNOLOGY  
DC2382A LTC2975IUP  
4 CHANNEL POWER SYSTEM MANAGER

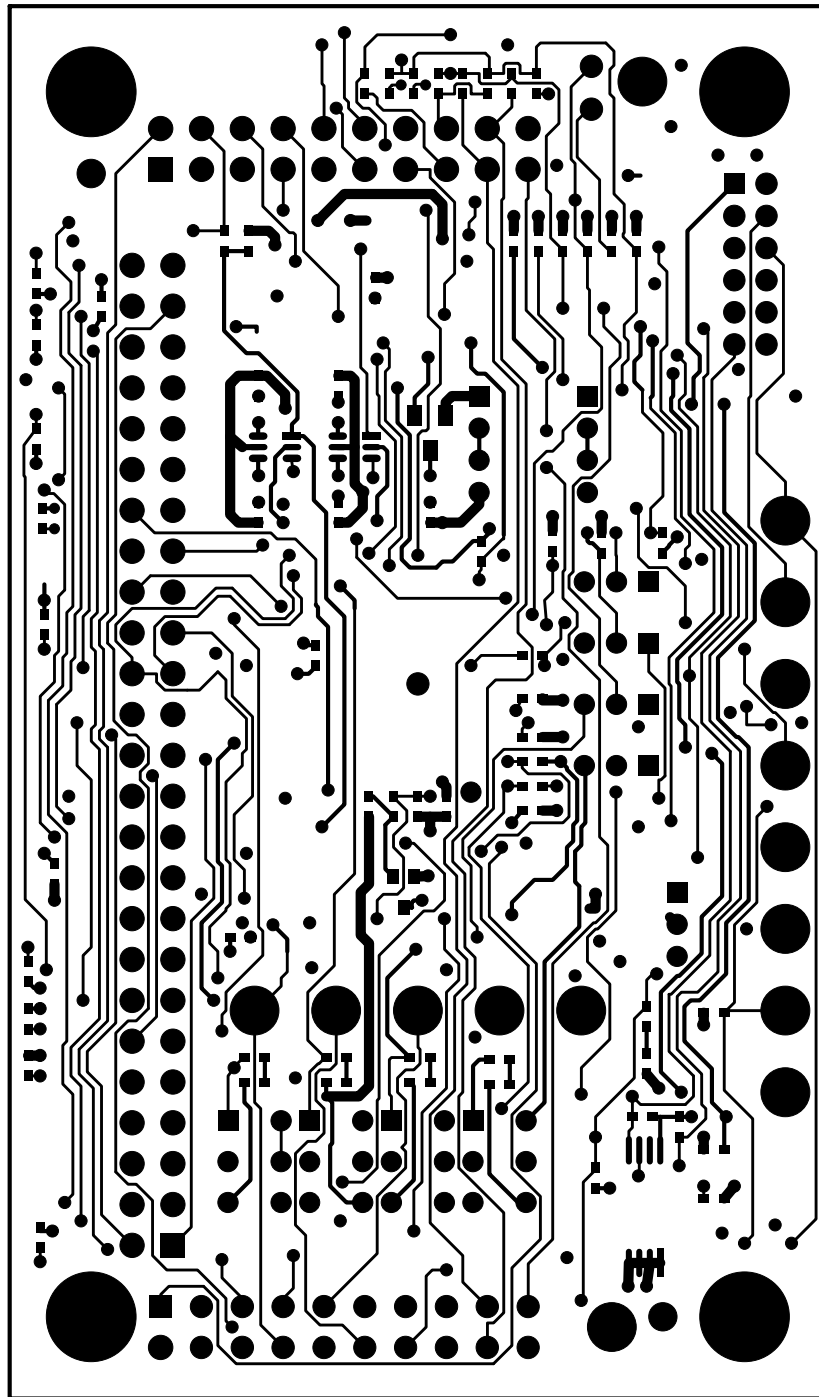
DATE: 05-18-15





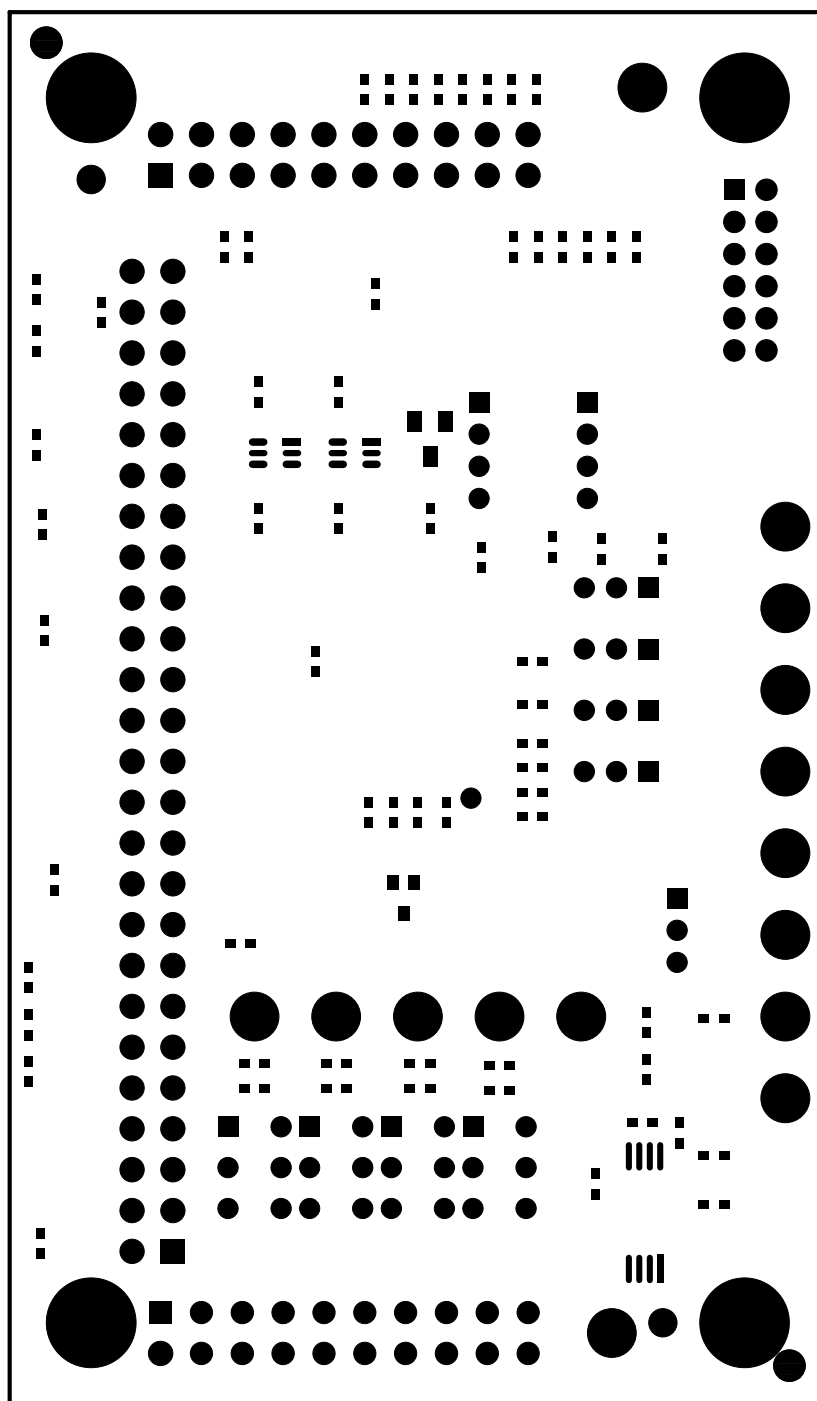
LAYER 3 - ROUTE  
LINEAR TECHNOLOGY  
DC2382A LTC2975IUP  
4 CHANNEL POWER SYSTEM MANAGER

DATE: 05-18-15



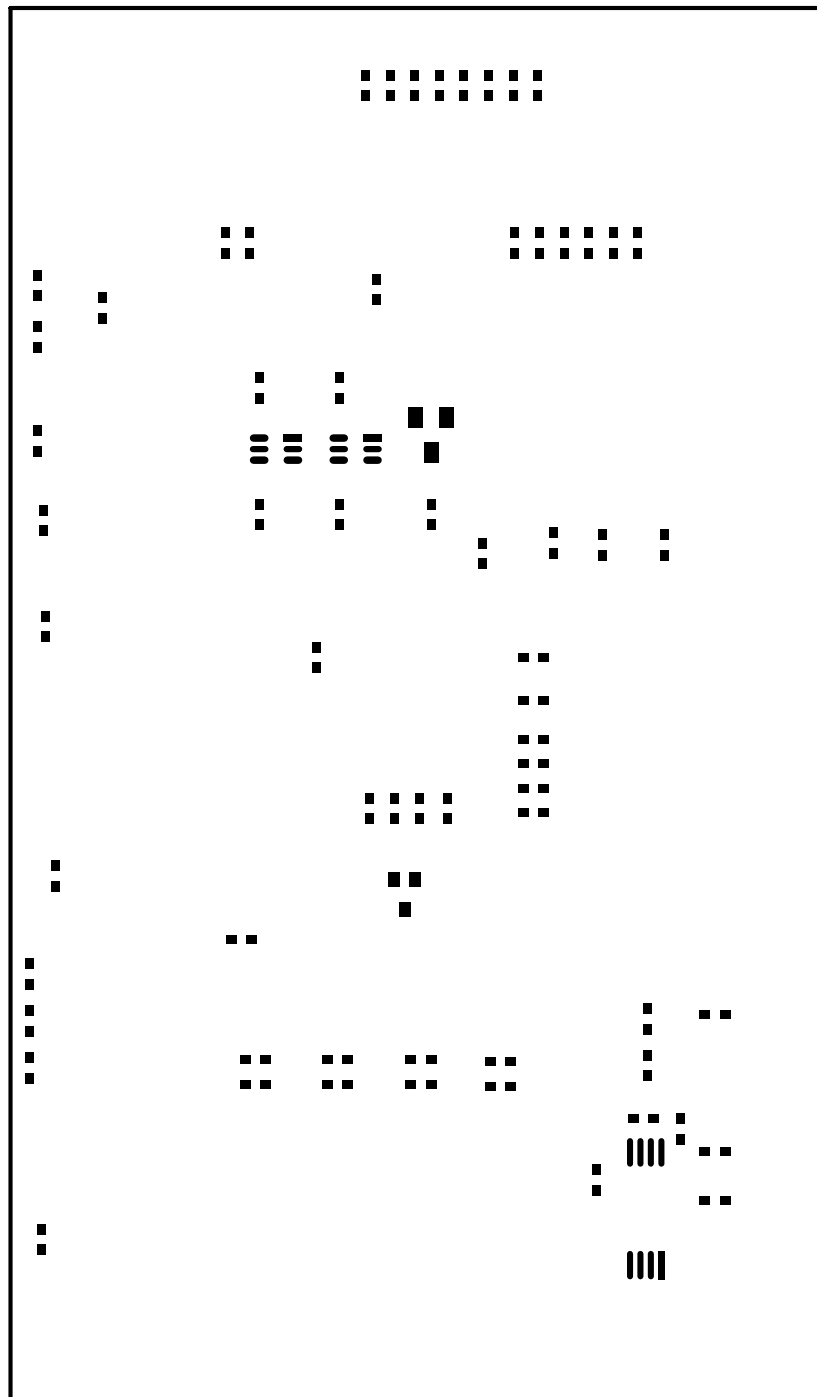
LAYER 4 – BOTTOM LAYER  
LINEAR TECHNOLOGY  
DC2382A LTC2975IUP  
4 CHANNEL POWER SYSTEM MANAGER

DATE: 05-18-15



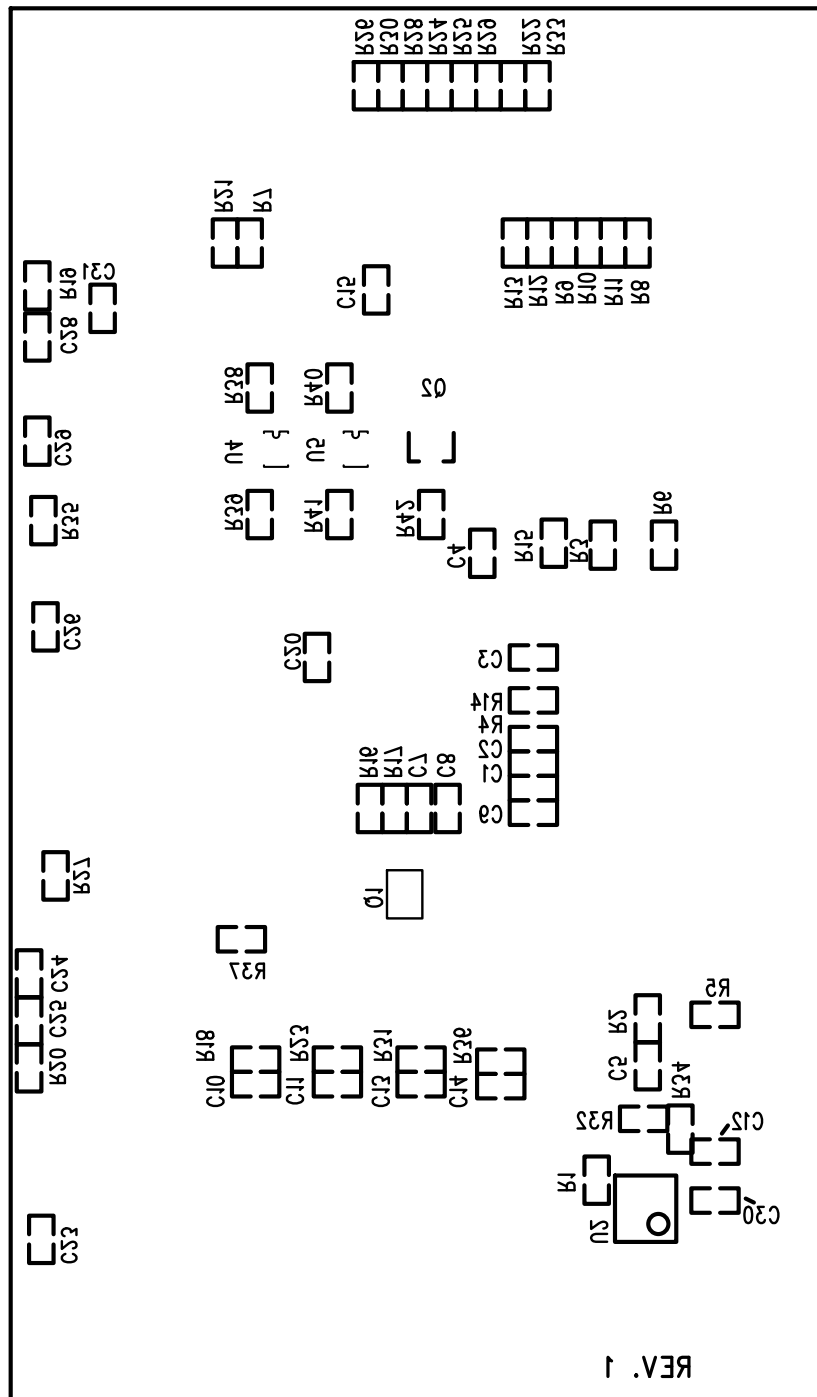
BOTTOM SOLDER MASK  
LINEAR TECHNOLOGY  
DC2382A LTC2975IUP  
4 CHANNEL POWER SYSTEM MANAGER

DATE: 05-18-15



BOTTOM SOLDER PASTE  
LINEAR TECHNOLOGY  
DC2382A LTC2975IUP  
4 CHANNEL POWER SYSTEM MANAGER

DATE: 05-18-15



BOTTOM SILKSCREEN  
 LINEAR TECHNOLOGY  
 DC2382A LTC2975IUP  
 4 CHANNEL POWER SYSTEM MANAGER

DATE: 05-18-15