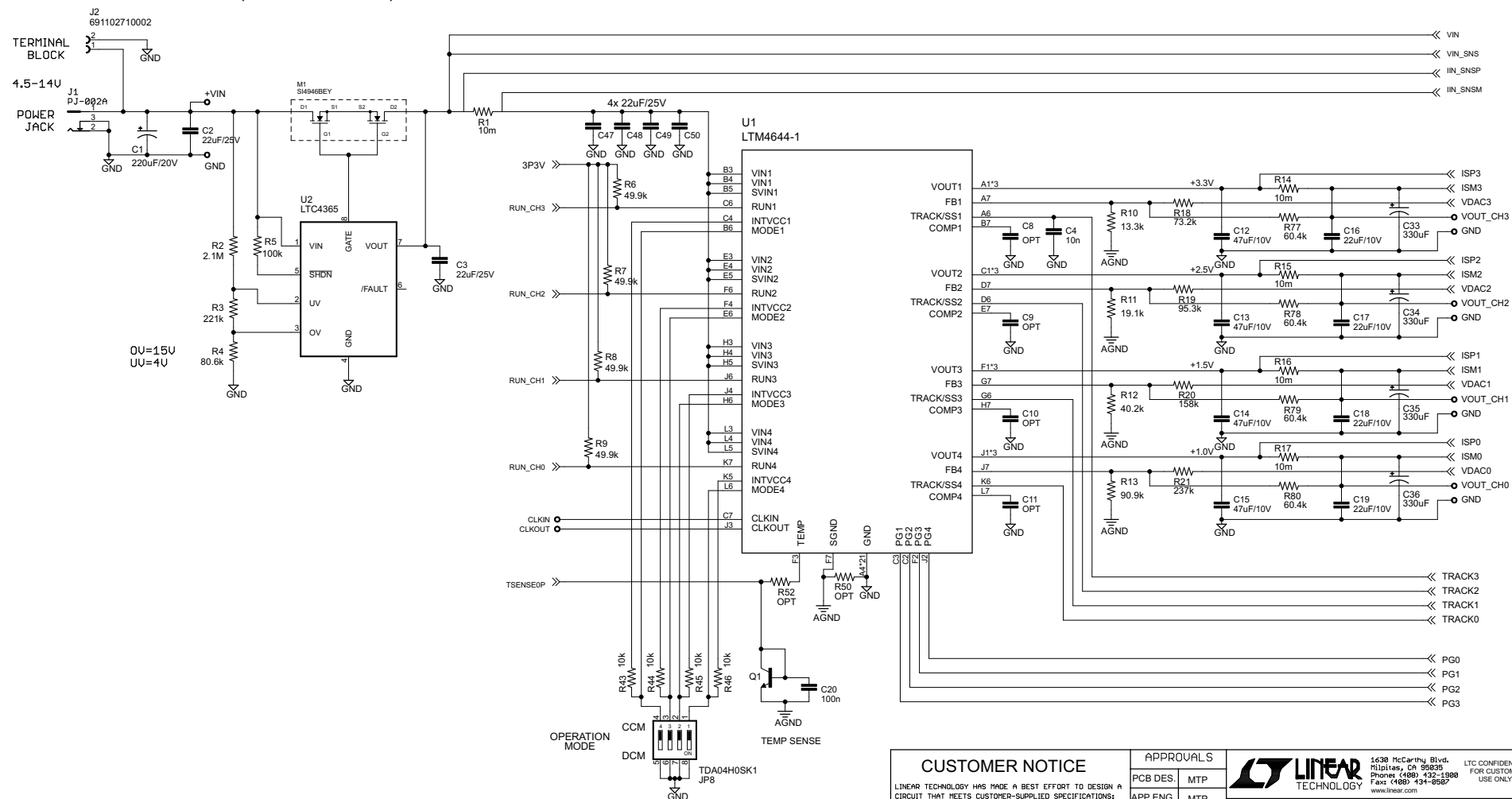



REVISION HISTORY			
ECO	REV	DESCRIPTION	DATE
-	1b	Production	M Peters 11-28-16

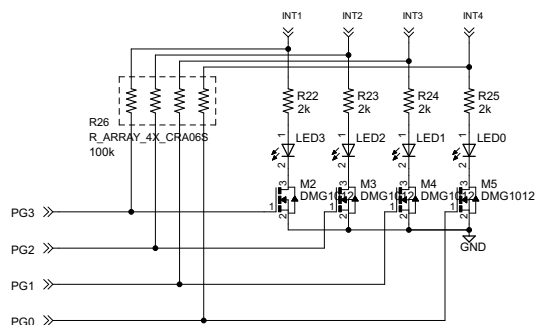
## Input Protection (OV/UV/Reverse)

## Quad 4A DC/DC Converter

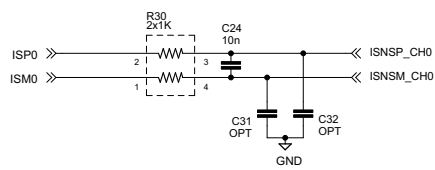
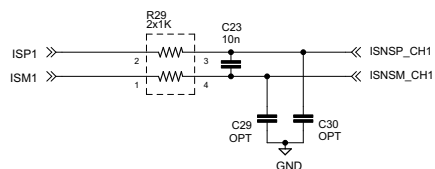
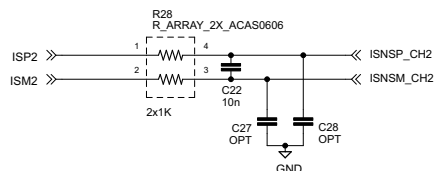
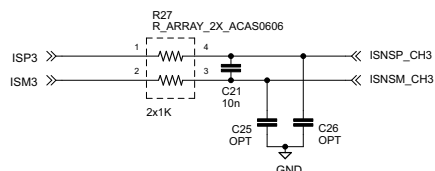


CUSTOMER NOTICE		APPROVALS		 <b>LINEAR</b> TECHNOLOGY	1630 McCarthy Blvd. Milpitas, CA 95035 Phone (408) 432-1900 Fax (408) 434-9957 <a href="http://www.linear.com">www.linear.com</a>	LTC CONFIDENTIAL FOR CUSTOMER USE ONLY
LINEAR TECHNOLOGY HAS MADE A BEST EFFORT TO DESIGN A CIRCUIT THAT MEETS CUSTOMER-SUPPLIED SPECIFICATIONS; HOWEVER, IT REMAINS THE CUSTOMER'S RESPONSIBILITY TO VERIFY PROPER AND RELIABLE OPERATION IN THE ACTUAL APPLICATION. COMPONENT SUBSTITUTION AND PRINTED CIRCUIT BOARD LAYOUT MAY SIGNIFICANTLY AFFECT CIRCUIT PERFORMANCE OR RELIABILITY. CONTACT LINEAR TECHNOLOGY APPLICATIONS ENGINEERING FOR ASSISTANCE.		PCB DES.	MTP		TITLE: LTM4644-1 Quad 4A Supply with 50-pin Connector to Power System Manager	
		APP ENG.	MTP	SIZE B IC NO. LTM4644-1 Demo Circuit 2363A		REV: 1b
THIS CIRCUIT IS PROPRIETARY TO LINEAR TECHNOLOGY AND SUPPLIED FOR USE WITH LINEAR TECHNOLOGY PARTS.		SCALE = NONE		DATE: 11/29/2016 11:03:14 AM		SHEET: 1/3

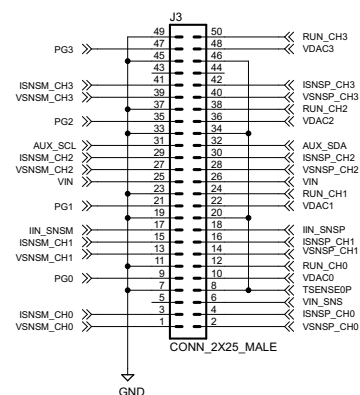
## LED Indication



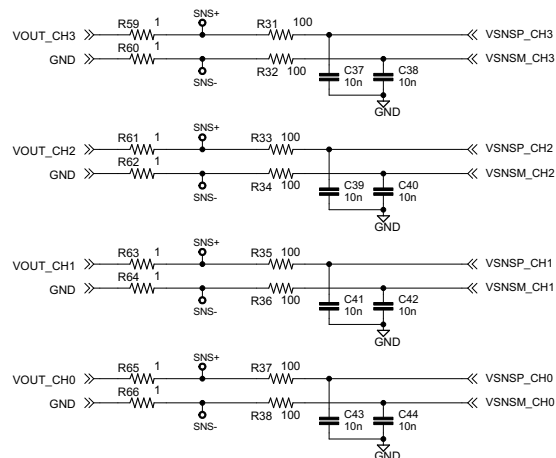
## Current Sense Filtering



## Board-to-Board Connector

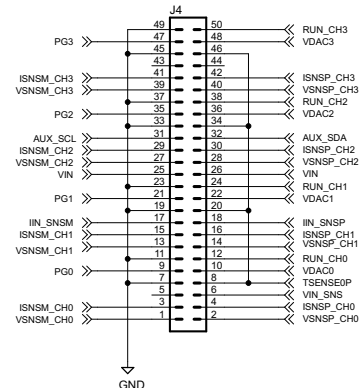


## Voltage Sense Filtering



NOTE: REMOVE R59-R66 FOR REMOTE SENSING

### Test Points/ Optional Header



## CUSTOMER NOTICE

LINEAR TECHNOLOGY HAS MADE A BEST EFFORT TO DESIGN CIRCUIT THAT MEETS CUSTOMER-SUPPLIED SPECIFICATIONS; HOWEVER, IT REMAINS THE CUSTOMERS RESPONSIBILITY TO VERIFY PROPER AND RELIABLE OPERATION IN THE ACTUAL APPLICATION. COMPONENT SUBSTITUTION AND PRINTED CIRCUIT BOARD LAYOUT MAY SIGNIFICANTLY AFFECT CIRCUIT PERFORMANCE OR RELIABILITY. CONTACT LINEAR TECHNOLOGY APPLICATIONS ENGINEERING FOR ASSISTANCE

THIS CIRCUIT IS PROPRIETARY TO LINEAR TECHNOLOGY AND  
SUPPLIED FOR USE WITH LINEAR TECHNOLOGY PARTS

APPROVALS
-----------

PCB DES.	MTP
APP ENG.	MTP



1630 McCarthy Blvd.  
Milpitas, CA 95035  
Phone: (408) 432-1900  
Fax: (408) 434-0507  
[www.linear.com](http://www.linear.com)

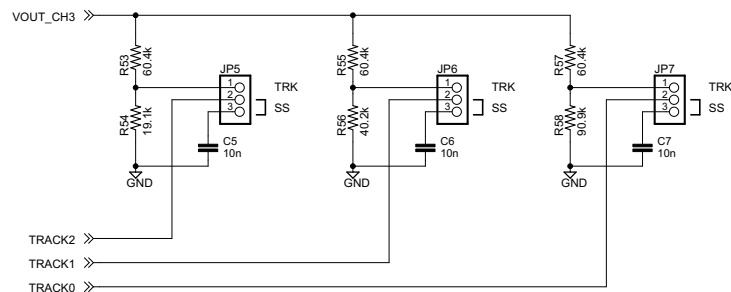
LTC CONFIDENTIAL  
FOR CUSTOMER  
USE ONLY

TITLE: LTM4644-1 Quad 4A Supply with 50-pin Connector to Power System Manager		
SIZE B	IC NO. LTM4644-1 Demo Circuit 2363A	REV: 1b

DATE: 11/29/2016 11:03:14 AM	SHEET: 2/3
------------------------------	------------

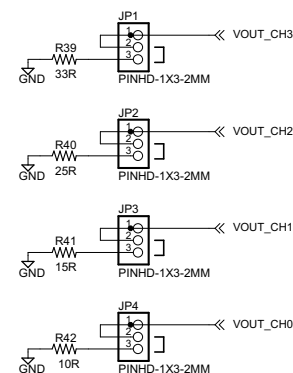
REVISION HISTORY				
ECO	REV	DESCRIPTION	APPROVED	DATE
-	1b	Production	M. Peters	11-28-16

## Tracking/SoftStart Jumpers



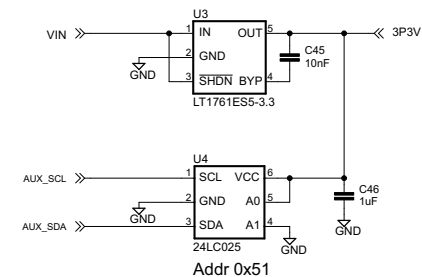
By default, jumpers set to SoftStart

## Pre-Load Jumpers



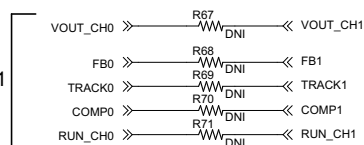
By default, jumpers set to pre-load ON

## +3.3V LDO and Identity EEPROM

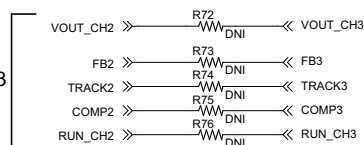


## Optional Jumpers for Parallel Operation

Parallel CH0 and CH1



Parallel CH2 and CH3



R67 thru R76 are 0 ohm

### CUSTOMER NOTICE

LINEAR TECHNOLOGY HAS MADE A BEST EFFORT TO DESIGN A CIRCUIT THAT MEETS CUSTOMER-SUPPLIED SPECIFICATIONS; HOWEVER, IT REMAINS THE CUSTOMER'S RESPONSIBILITY TO VERIFY PROPER AND RELIABLE OPERATION IN THE ACTUAL APPLICATION. COMPONENT SUBSTITUTION AND PRINTED CIRCUIT BOARD LAYOUT MAY SIGNIFICANTLY AFFECT CIRCUIT PERFORMANCE OR RELIABILITY. CONTACT LINEAR TECHNOLOGY APPLICATIONS ENGINEERING FOR ASSISTANCE.

THIS CIRCUIT IS PROPRIETARY TO LINEAR TECHNOLOGY AND SUPPLIED FOR USE WITH LINEAR TECHNOLOGY PARTS

### APPROVALS

PCB DES. MTP

APP ENG. MTP



1630 McCarthy Blvd.  
Folsom, CA 95630  
Phone (408) 432-1900  
Fax (408) 434-9957  
www.linear.com

LTC CONFIDENTIAL  
FOR CUSTOMER  
USE ONLY

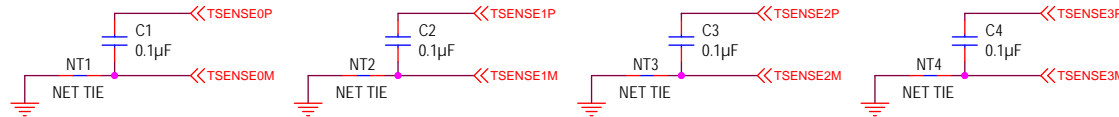
TITLE: LTM4644-1 Quad 4A Supply  
with 50-pin Connector to Power System Manager

SIZE B IC NO. LTM4644-1  
Demo Circuit 2363A REV: 1b

SCALE = NONE

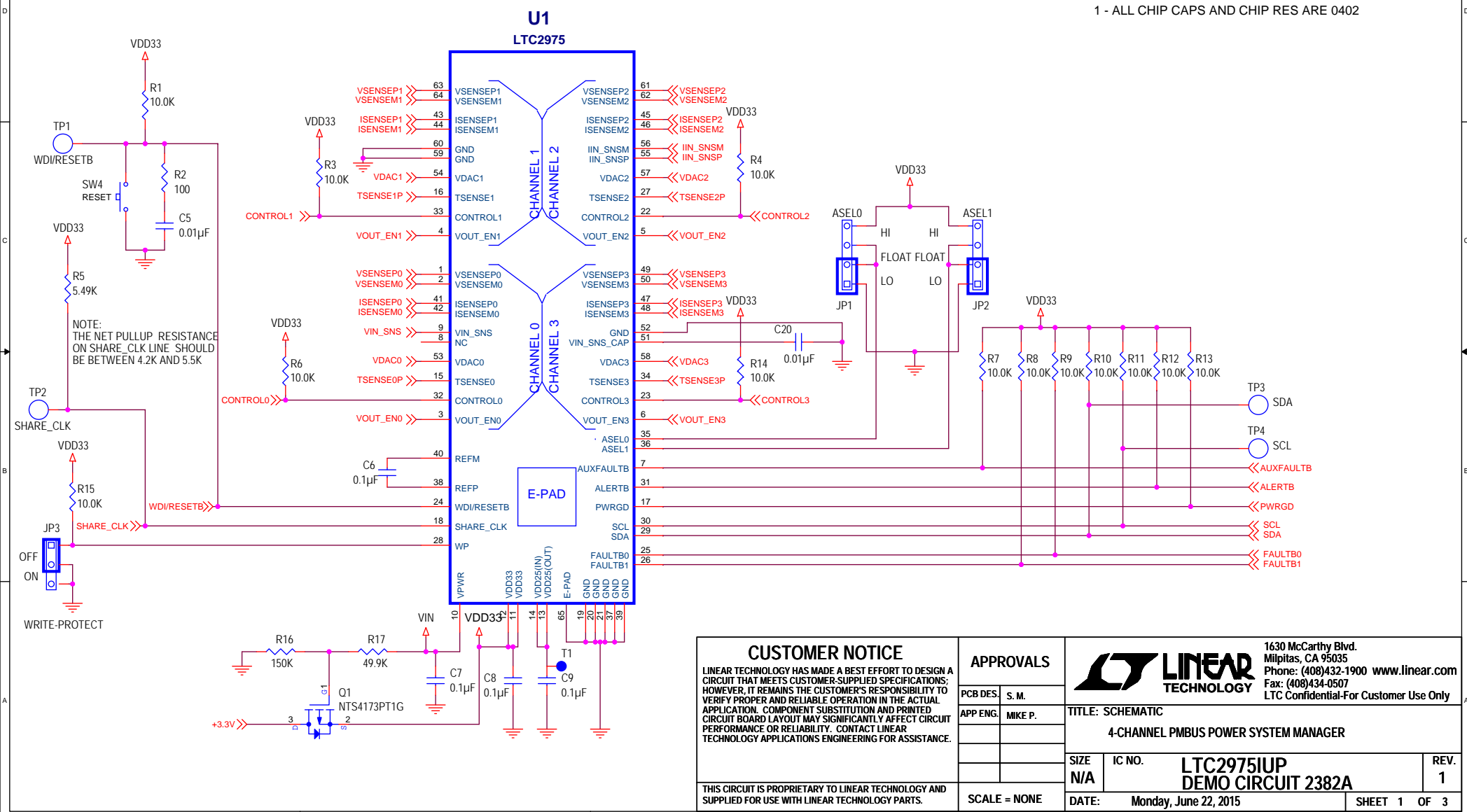
DATE: 11/29/2016 11:03:14 AM SHEET: 3/3

NOTE:  
MAKE ALL TSENSE  
TRACES SHIELDED  
AND DIFFERENTIAL  
PLACE CAPS  
AND GND CONNECTIONS  
CAPS NEAR LTC2975



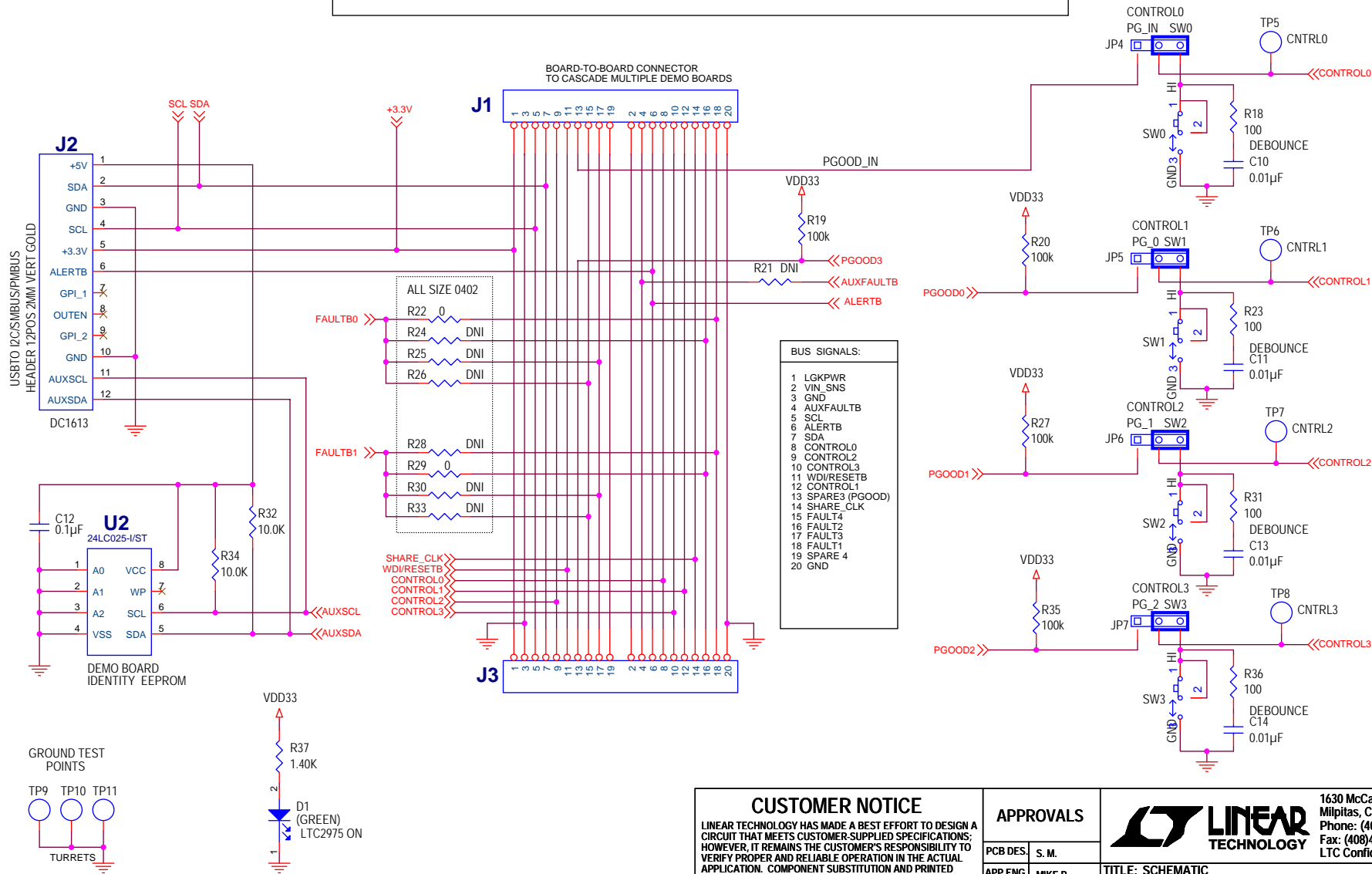
REVISION HISTORY				
ECO	REV	DESCRIPTION	APPROVED	DATE
—	1	PROTOTYPE	MICHAEL P.	05-18-15

NOTES - UNLESS OTHERWISE SPECIFIED:  
1 - ALL CHIP CAPS AND CHIP RES ARE 0402



<b>CUSTOMER NOTICE</b> LINEAR TECHNOLOGY HAS MADE A BEST EFFORT TO DESIGN A CIRCUIT THAT MEETS CUSTOMER-SUPPLIED SPECIFICATIONS; HOWEVER, IT REMAINS THE CUSTOMER'S RESPONSIBILITY TO VERIFY PROPER AND RELIABLE OPERATION IN THE ACTUAL APPLICATION. COMPONENT SUBSTITUTION AND PRINTED CIRCUIT BOARD LAYOUT MAY SIGNIFICANTLY AFFECT CIRCUIT PERFORMANCE OR RELIABILITY. CONTACT LINEAR TECHNOLOGY APPLICATIONS ENGINEERING FOR ASSISTANCE.		<b>APPROVALS</b>		 1630 McCarthy Blvd. Milpitas, CA 95035 Phone: (408)432-1900 www.linear.com Fax: (408)434-0507 LTC Confidential-For Customer Use Only		
		PCB DES.	S. M.			
		APP ENG.	MIKE P.			
THIS CIRCUIT IS PROPRIETARY TO LINEAR TECHNOLOGY AND SUPPLIED FOR USE WITH LINEAR TECHNOLOGY PARTS.		SCALE = NONE		TITLE: SCHEMATIC 4-CHANNEL PMBUS POWER SYSTEM MANAGER		
				SIZE N/A	IC NO. <b>LTC2975IUP DEMO CIRCUIT 2382A</b>	REV. <b>1</b>
				DATE: Monday, June 22, 2015		SHEET 1 OF 3

ALL PARTS ON THIS PAGE ARE FOR DEMO ONLY, NOT NEEDED IN CUSTOMER DESIGN



### CUSTOMER NOTICE

LINEAR TECHNOLOGY HAS MADE A BEST EFFORT TO DESIGN A CIRCUIT THAT MEETS CUSTOMER-SUPPLIED SPECIFICATIONS; HOWEVER, IT REMAINS THE CUSTOMER'S RESPONSIBILITY TO VERIFY PROPER AND RELIABLE OPERATION IN THE ACTUAL APPLICATION. COMPONENT SUBSTITUTION AND PRINTED CIRCUIT BOARD LAYOUT MAY SIGNIFICANTLY AFFECT CIRCUIT PERFORMANCE OR RELIABILITY. CONTACT LINEAR TECHNOLOGY APPLICATIONS ENGINEERING FOR ASSISTANCE.

THIS CIRCUIT IS PROPRIETARY TO LINEAR TECHNOLOGY AND SUPPLIED FOR USE WITH LINEAR TECHNOLOGY PARTS.

### APPROVALS

PCB DES. S. M.

APP ENG. MIKE P.

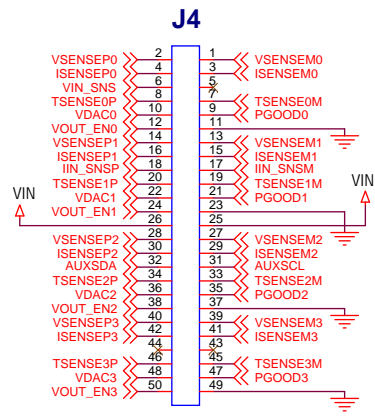
SCALE = NONE



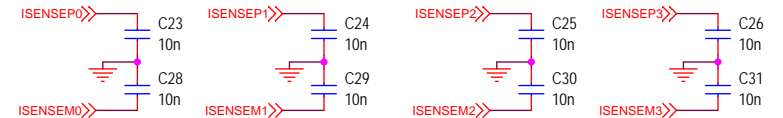
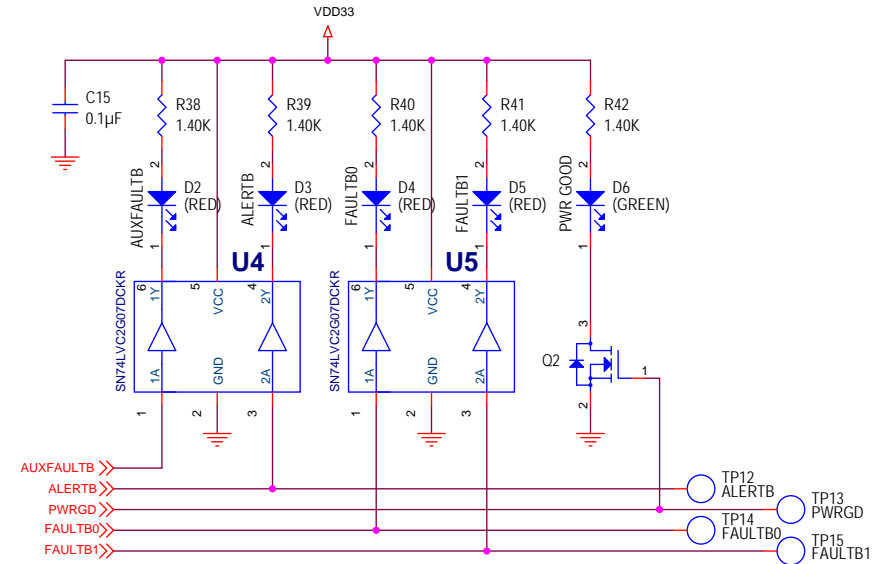
1630 McCarthy Blvd.  
Milpitas, CA 95035  
Phone: (408)432-1900 www.linear.com  
Fax: (408)434-0507  
LTC Confidential-For Customer Use Only

TITLE: SCHEMATIC				
4-CHANNEL PMBUS POWER SYSTEM MANAGER				
SIZE N/A	IC NO. LTC2975IUP DEMO CIRCUIT 2382A			REV. 1
DATE: Monday, June 22, 2015			SHEET 2 OF 3	


ALL PARTS ON THIS PAGE ARE FOR DEMO ONLY, NOT NEEDED IN CUSTOMER DESIGN



BOARD TO BOARD  
CONNECTOR  
MATES WITH DC2363A



INPUT FILTERS FOR CURRENT SENSING  
PLACE CLOSE TO LTC2975

<div>CUSTOMER NOTICE</div> <div>LINEAR TECHNOLOGY HAS MADE A BEST EFFORT TO DESIGN A CIRCUIT THAT MEETS CUSTOMER-SUPPLIED SPECIFICATIONS; HOWEVER, IT REMAINS THE CUSTOMER'S RESPONSIBILITY TO VERIFY PROPER AND RELIABLE OPERATION IN THE ACTUAL APPLICATION. COMPONENT SUBSTITUTION AND PRINTED CIRCUIT BOARD LAYOUT MAY SIGNIFICANTLY AFFECT CIRCUIT PERFORMANCE OR RELIABILITY. CONTACT LINEAR TECHNOLOGY APPLICATIONS ENGINEERING FOR ASSISTANCE.</div>		<div>APPROVALS</div> <div><div>PCB DES.</div><div>S. M.</div></div> <div><div>APP ENG.</div><div>MIKE P.</div></div> <div></div> <div></div> <div></div> <div></div>		<div></div> <div>TITLE: SCHEMATIC</div> <div>4-CHANNEL PMBUS POWER SYSTEM MANAGER</div> <div><div>SIZE</div><div>N/A</div></div> <div><div>IC NO.</div><div>LTC2975IUP</div><div>DEMO CIRCUIT 2382A</div></div> <div><div>REV.</div><div>1</div></div>		<div>1630 McCarthy Blvd. Milpitas, CA 95035 Phone: (408)432-1900 <a href="http://www.linear.com">www.linear.com</a> Fax: (408)434-0507 LTC Confidential-For Customer Use Only</div>	
<div>THIS CIRCUIT IS PROPRIETARY TO LINEAR TECHNOLOGY AND SUPPLIED FOR USE WITH LINEAR TECHNOLOGY PARTS.</div>		<div>SCALE = NONE</div>		<div>DATE: Monday, June 22, 2015</div>		<div>SHEET 3 OF 3</div>	