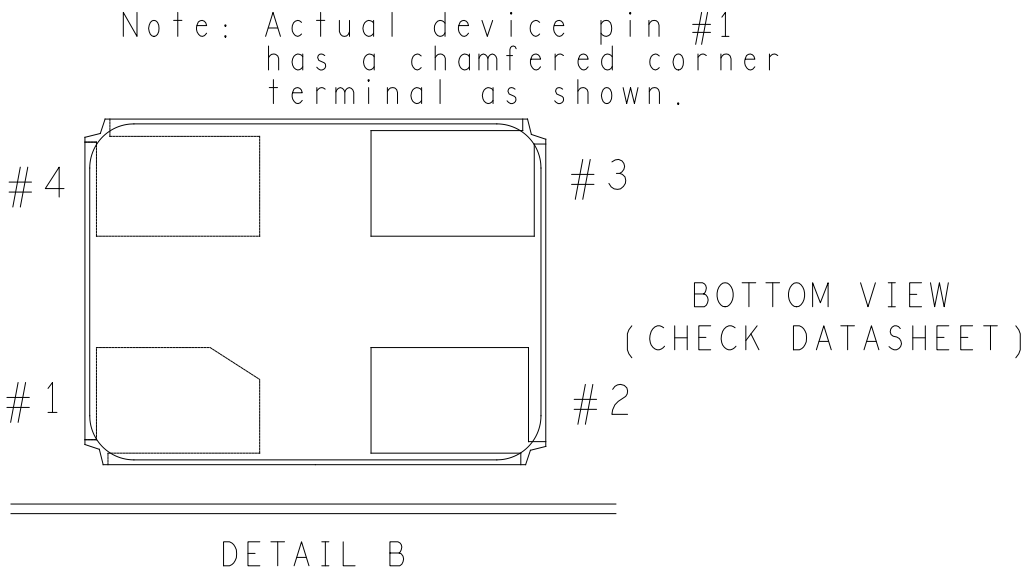


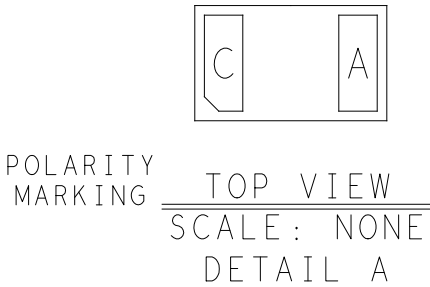
REVISIONS			
REV	DESCRIPTION	DATE	APPROVED
A	INITIAL RELEASE	24OCT22	D. HARRINGTON
B	CHANGES AS PER ECR-113417	21MAR23	D. HARRINGTON




ASSEMBLY NOTES:

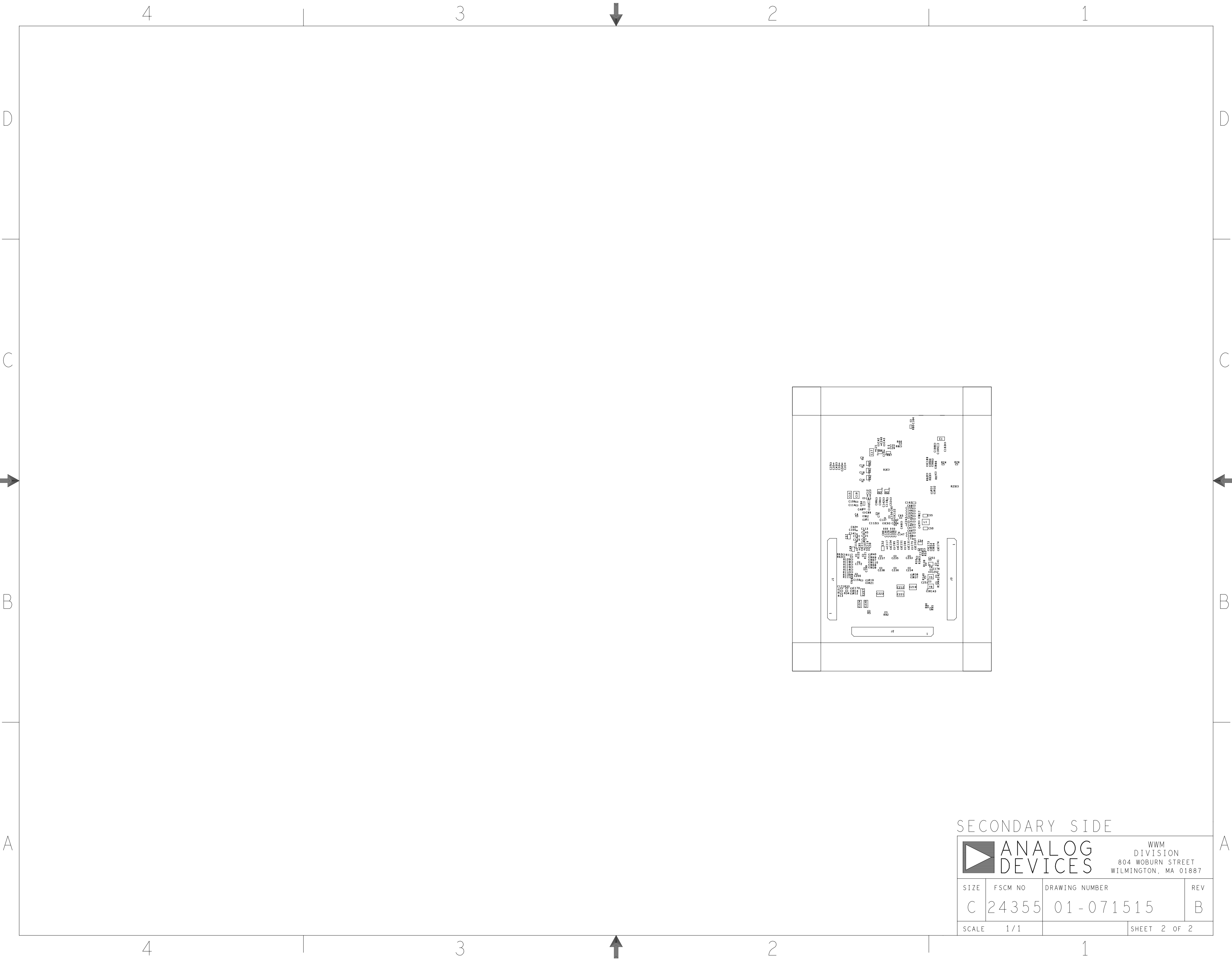
- BOARD ACCEPTABILITY PER ANALOG DEVICES, INC. SPECIFICATION TST00119 (LATEST REVISION).
- REPAIRS PER IPC-7711/21(LATEST REVISION) ARE ALLOWED.
- REPAIRS ARE NOT ALLOWED IN SOLDERMASK FREE AREAS ON EITHER SIDE OF THE BOARD.
- SEE DETAIL A FOR D15.
- SEE CRYSTAL OSCILLATOR PIN 1 DETAILS:
A. SEE DETAIL B FOR CRYSTALS - Y1-Y6.
- SINGULATE BOARD AFTER ASSEMBLY PROCESS
- SMOOTHEN EDGES AND FREE FROM BURRS AFTER DEPANELIZATION PROCESS.
- RoHS COMPLIANCE: ASSEMBLY VENDOR SHOULD ASSURE COMPLIANCE WITH LEAD-FREE AND RoHS PCB ASSEMBLY STANDARDS (EU RoHS DIRECTIVE 2002/95/EC).

ESDA25P35-ASSY-DETAIL



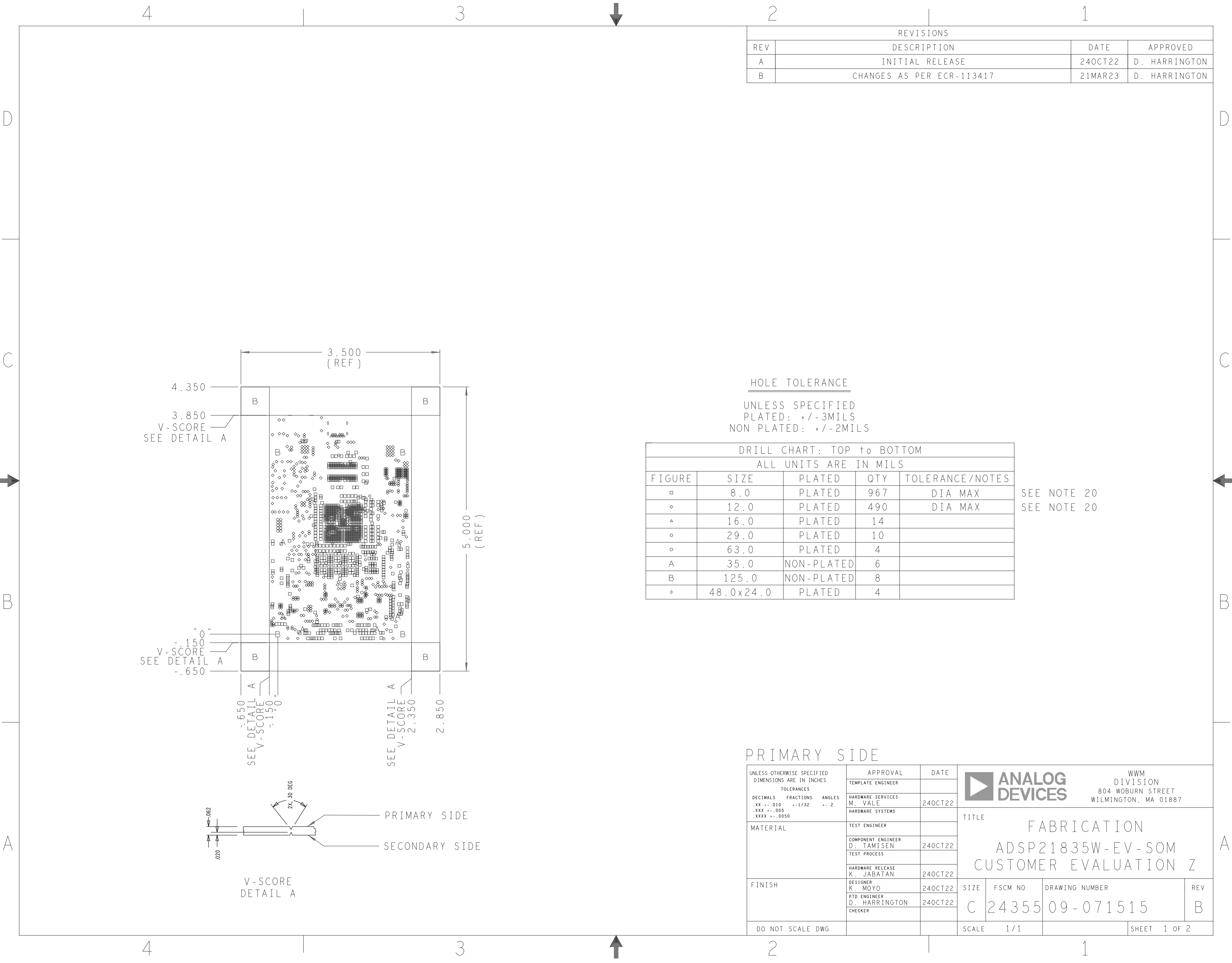
PRIMARY SIDE

UNLESS OTHERWISE SPECIFIED DIMENSIONS ARE IN INCHES			APPROVAL		DATE		<div>ANALOG DEVICES</div> <div>WWM DIVISION 804 WOBURN STREET WILMINGTON, MA 01887</div>			
TOLERANCES			TEMPLATE ENGINEER							
DECIMALS	FRACTIONS	ANGLES	HARDWARE SERVICES M. VALE		24OCT22		TITLE ASSEMBLY ADSP21835W-EV-SOM CUSTOMER EVALUATION Z			
.XX --.010	--1/32	-- 2	HARDWARE SYSTEMS							
.XXX --.005							SIZE			
.XXXX --.0050										
MATERIAL			TEST ENGINEER				FSCM NO			
			COMPONENT ENGINEER D. TAMISEN		24OCT22					
			TEST PROCESS							
			HARDWARE RELEASE K. JABATAN		24OCT22					
FINISH			DESIGNER K. MOYO		24OCT22		DRAWING NUMBER			
			PTD ENGINEER D. HARRINGTON		24OCT22					
			CHECKER							
DO NOT SCALE DWG							SCALE			
							1 / 1			
							SHEET 1 OF 2			



SECONDARY SIDE

<div><div><div></div></div><div><div>ANALOG</div><div>DEVICES</div></div><div><div>WWM</div><div>DIVISION</div><div>804 WOBURN STREET</div><div>WILMINGTON, MA 01887</div></div></div>			
SIZE	FSCM NO	DRAWING NUMBER	REV
C	24355	01-071515	B
SCALE	1 / 1	SHEET 2 OF 2	




REVISIONS			
REV	DESCRIPTION	DATE	APPROVED
A	INITIAL RELEASE	24OCT22	D. HARRINGTON
B	CHANGES AS PER ECR-113417	21MAR23	D. HARRINGTON

HOLE TOLERANCE
UNLESS SPECIFIED
PLATED: +/-3MILS
NON PLATED: +/-2MILS

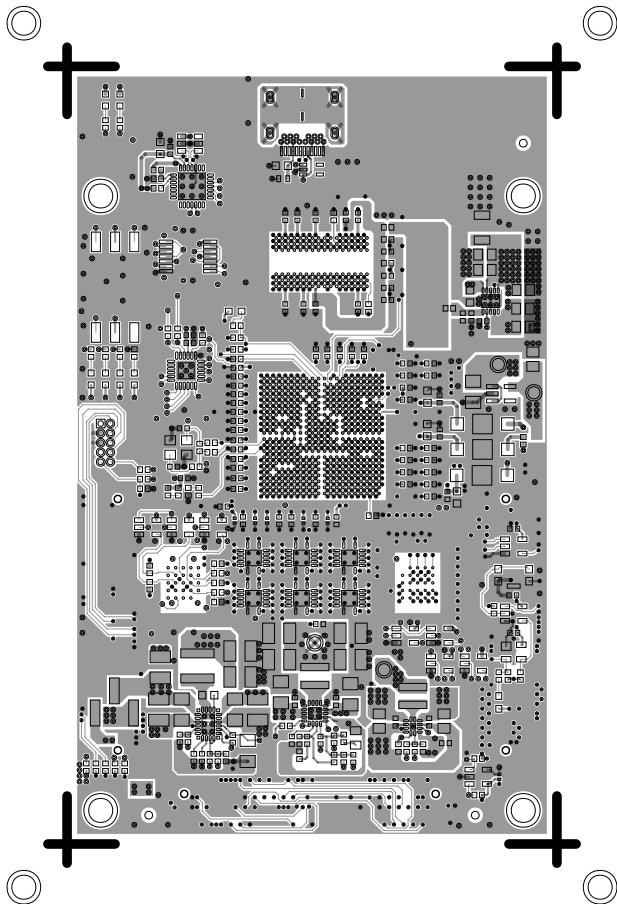
DRILL CHART: TOP to BOTTOM				
ALL UNITS ARE IN MILS				
FIGURE	SIZE	PLATED	QTY	TOLERANCE/NOTES
□	8.0	PLATED	967	DIA MAX
◇	12.0	PLATED	490	DIA MAX
△	16.0	PLATED	14	
○	29.0	PLATED	10	
◦	63.0	PLATED	4	
A	35.0	NON-PLATED	6	
B	125.0	NON-PLATED	8	
°	48.0x24.0	PLATED	4	

SEE NOTE 20
SEE NOTE 20

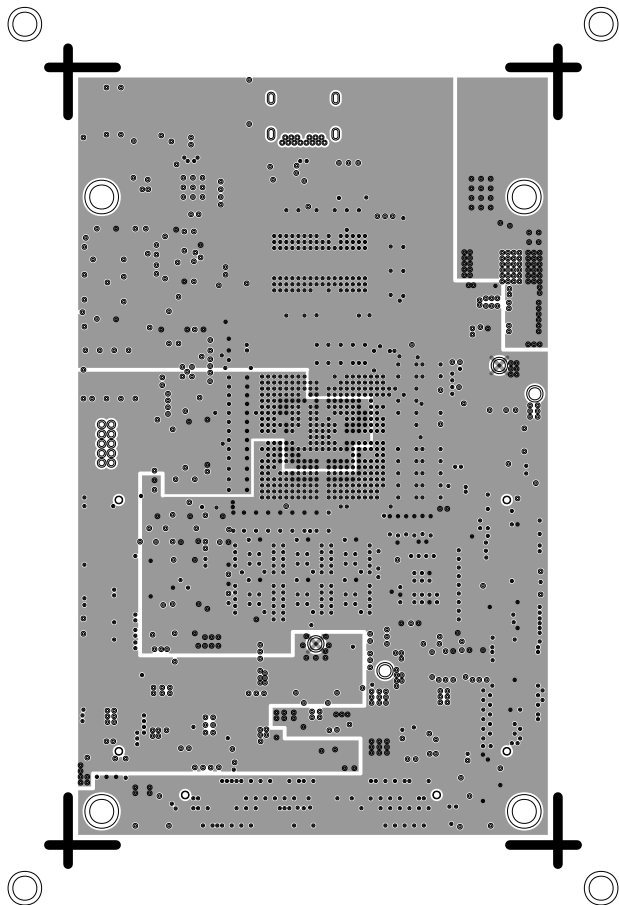
PRIMARY SIDE

UNLESS OTHERWISE SPECIFIED DIMENSIONS ARE IN INCHES			APPROVAL		DATE		<div>ANALOG DEVICES</div> <div>WWM DIVISION 804 WOBURN STREET WILMINGTON, MA 01887</div>						
			TEMPLATE ENGINEER										
TOLERANCES			HARDWARE SERVICES M. VALE		24OCT22		TITLE FABRICATION ADSP21835W-EV-SOM CUSTOMER EVALUATION Z						
DECIMALS	FRACTIONS	ANGLES	HARDWARE SYSTEMS										
.XX --.010	--1/32	-- 2											
.XXX --.005													
.XXXX --.0050													
MATERIAL			TEST ENGINEER			SIZE							
			COMPONENT ENGINEER D. TAMISEN		24OCT22			FSCM NO					
			TEST PROCESS						DRAWING NUMBER				
			HARDWARE RELEASE K. JABATAN		24OCT22								
FINISH			DESIGNER K. MOYO		24OCT22	C	24355	09-071515		REV B			
			PTD ENGINEER D. HARRINGTON		24OCT22								
			CHECKER										
DO NOT SCALE DWG						SCALE		1 / 1		SHEET		1 OF 2	

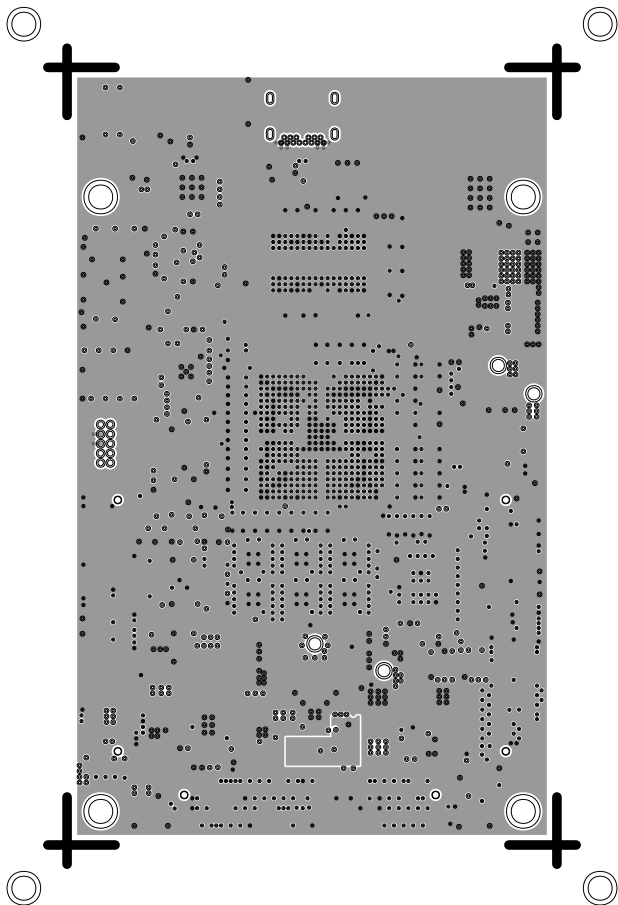
L1 PRIMARY
08-071515-01
REV B



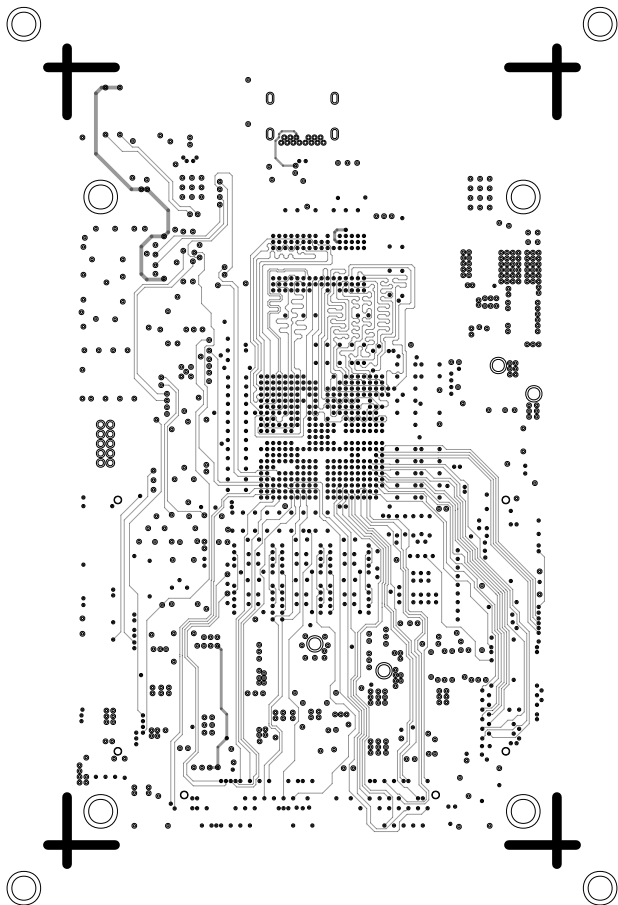
L2 PWR
08-071515-07
REV B



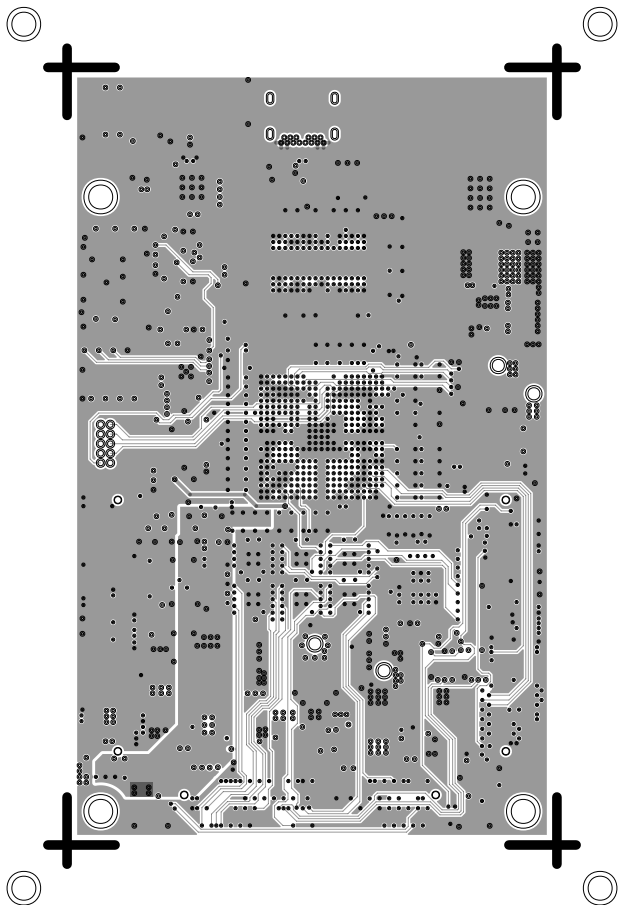
L3 GND
08-071515-08
REV B



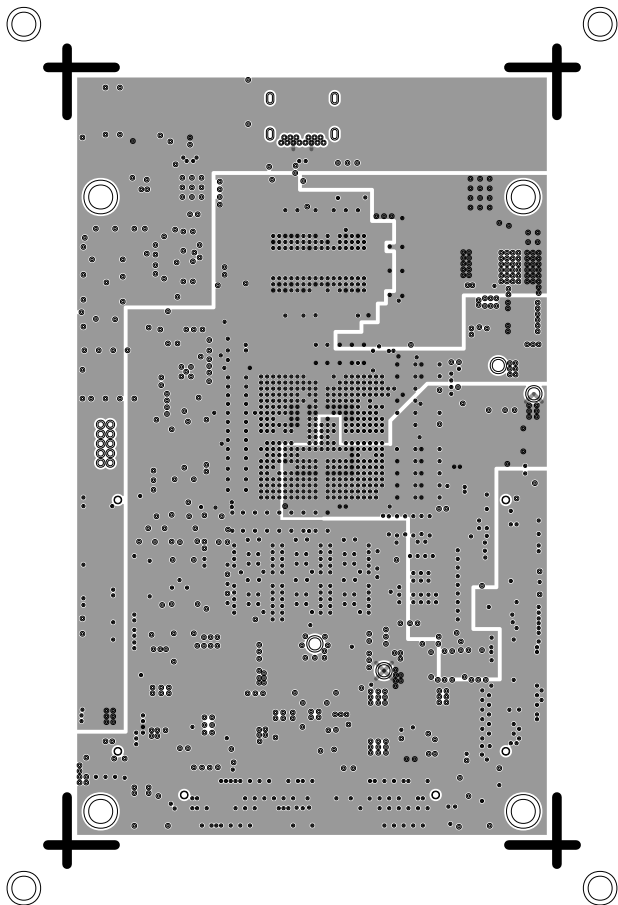
L4 SIG
08-071515-09
REV B



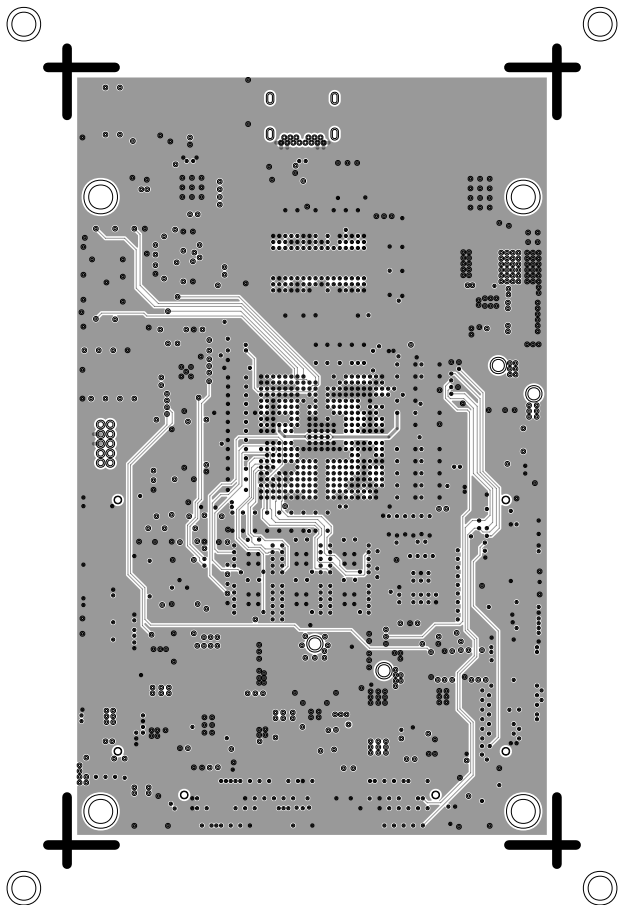
L5 SIG
08-071515-10
REV B



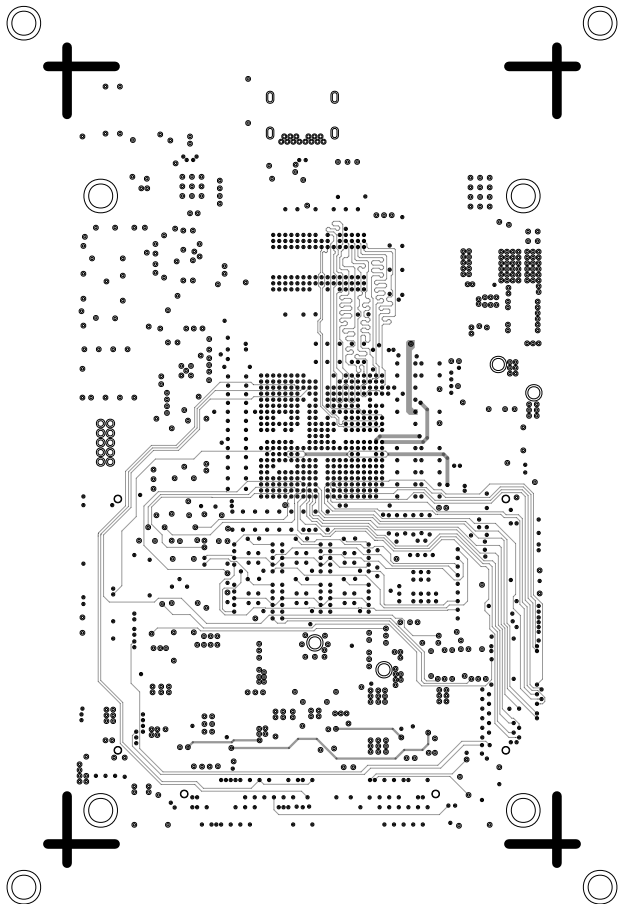
L6 PWR
08-071515-11
REV B



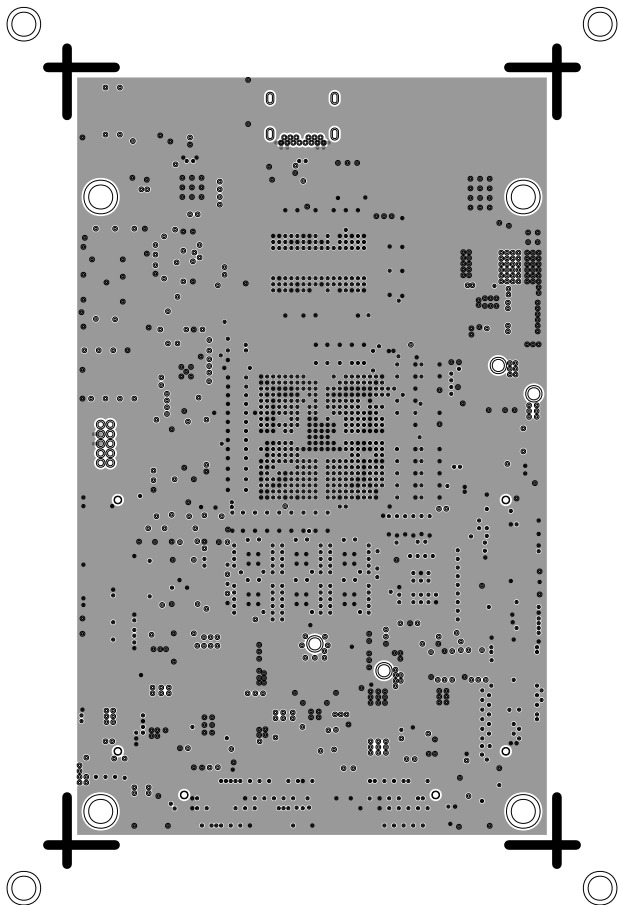
L7 SIG
08-071515-12
REV B



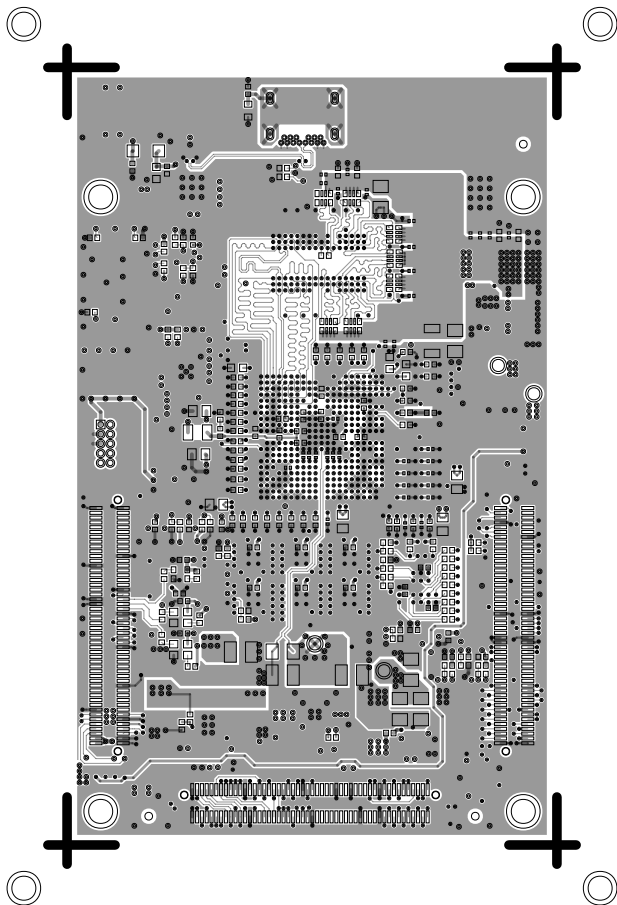
L8 SIG
08-071515-13
REV B



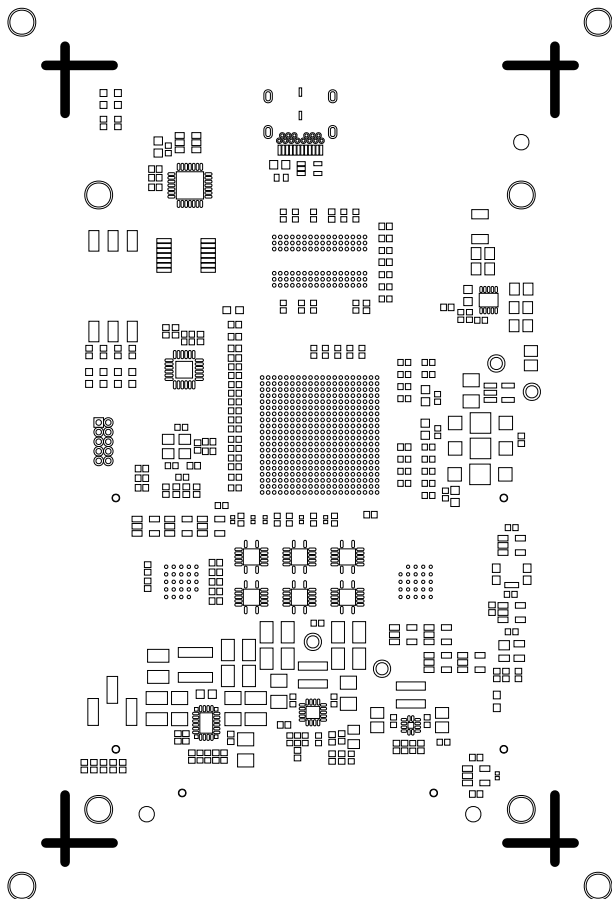
L9 GND
08-071515-14
REV B



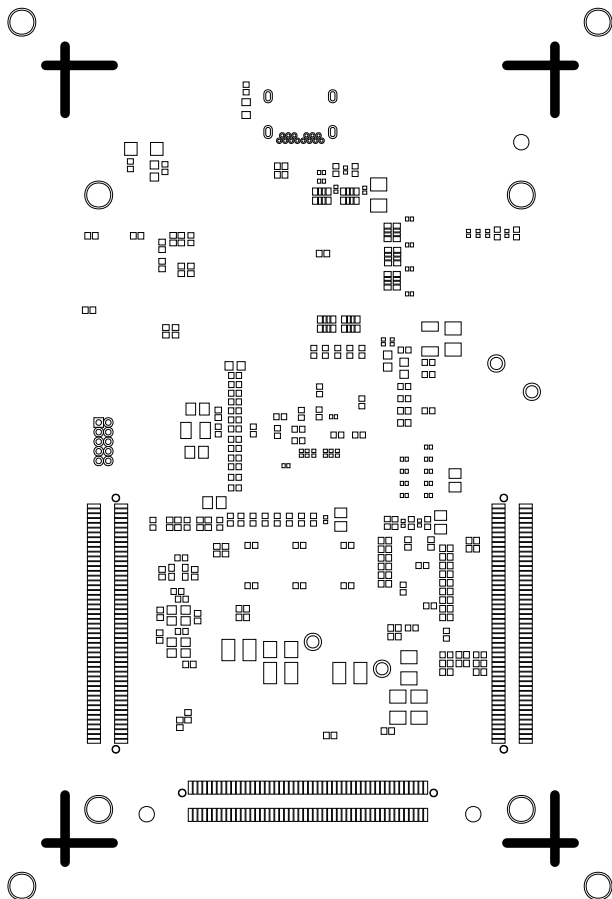
L10 SECONDARY
08-071515-02
REV B



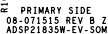
SOLDERMASK PRIMARY
08-071515-04
REV B



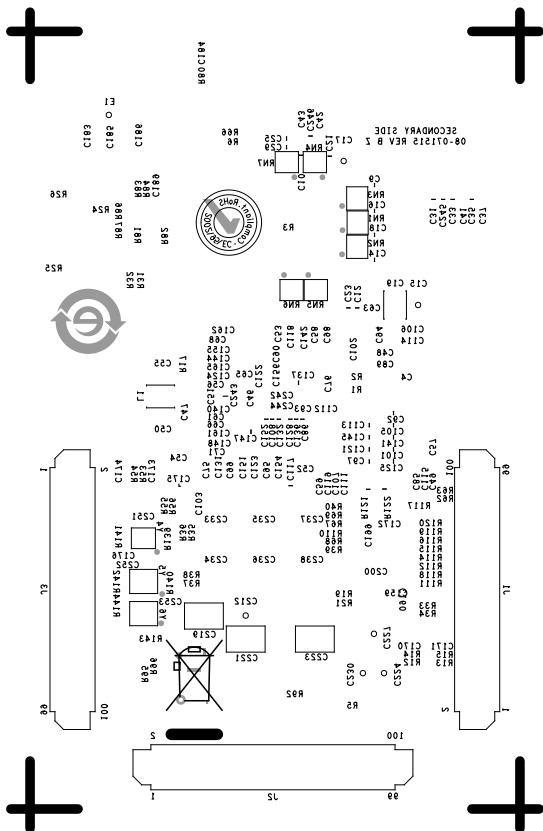
SOLDERMASK SECONDARY
08-071515-06
REV B



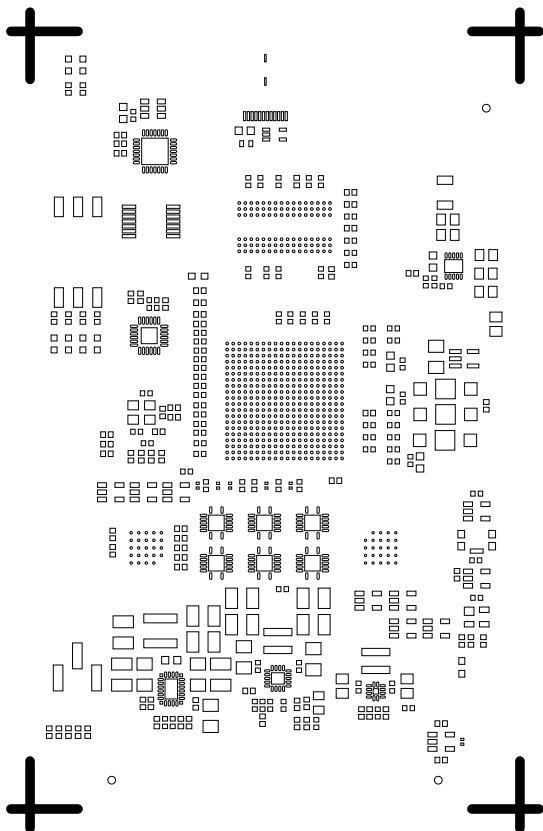
+



SILKSCREEN SECONDARY
08-071515-05
REV B



PASTEMASK PRIMARY
08-071515-15
REV B



PASTEMASK SECONDARY

08-071515-16

REV B

