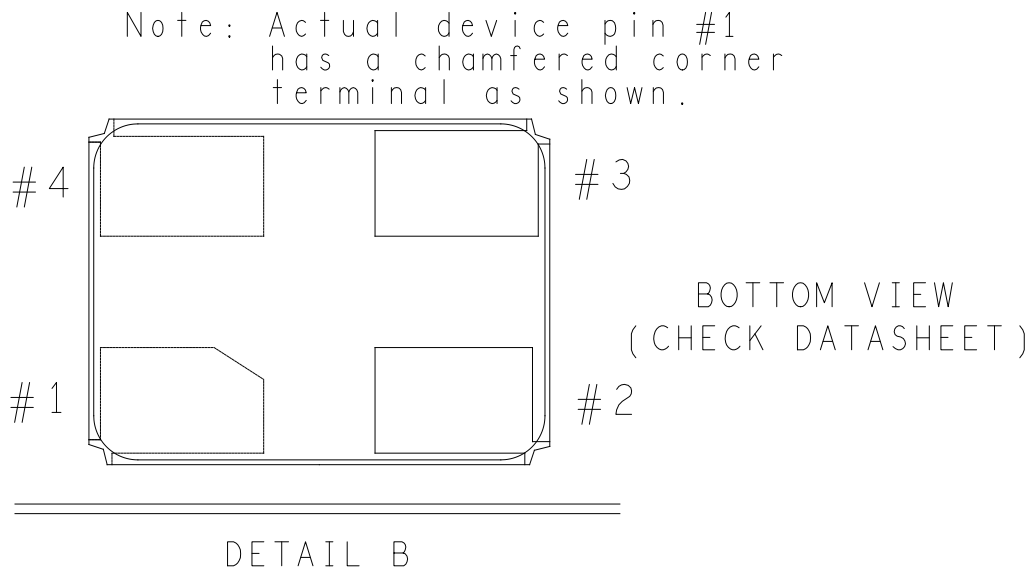
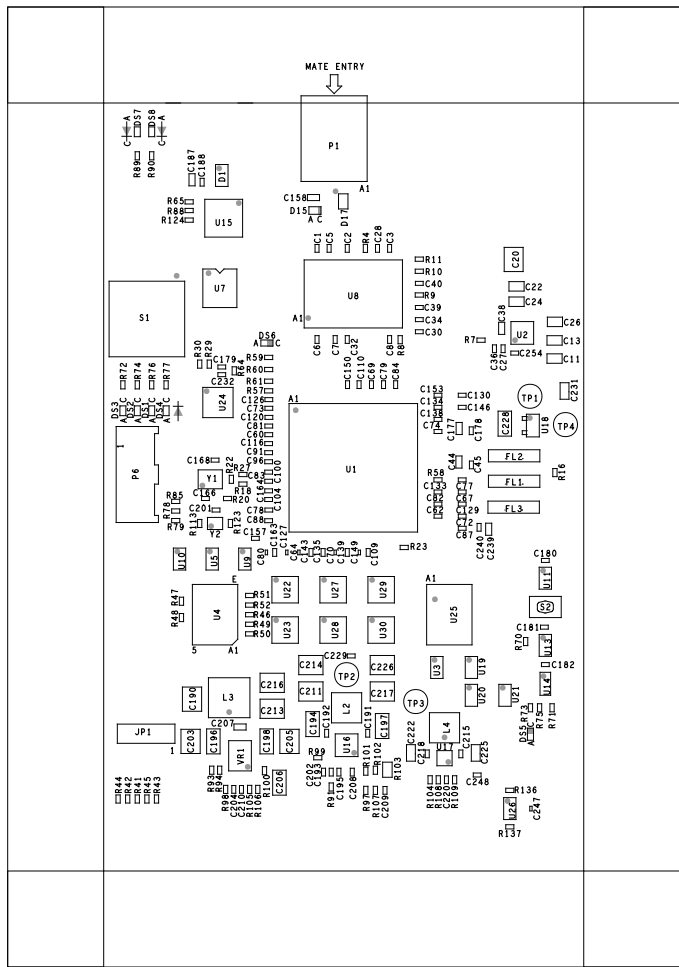


REVISIONS			
REV	DESCRIPTION	DATE	APPROVED
A	INITIAL RELEASE	24OCT22	D. HARRINGTON
B	CHANGES AS PER ECR-113417	21MAR23	D. HARRINGTON

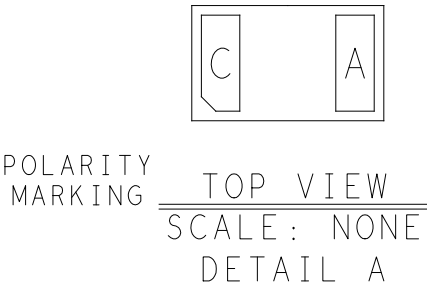


ASSEMBLY NOTES:


- BOARD ACCEPTABILITY PER ANALOG DEVICES, INC. SPECIFICATION TST00119 (LATEST REVISION).
- REPAIRS PER IPC-7711/21(LATEST REVISION) ARE ALLOWED.
- REPAIRS ARE NOT ALLOWED IN SOLDERMASK FREE AREAS ON EITHER SIDE OF THE BOARD.
- SEE DETAIL A FOR D15.
- SEE CRYSTAL OSCILLATOR PIN 1 DETAILS:
A. SEE DETAIL B FOR CRYSTALS - Y1-Y6.
- SINGULATE BOARD AFTER ASSEMBLY PROCESS
- SMOOTHEN EDGES AND FREE FROM BURRS AFTER DEPANELIZATION PROCESS.
- RoHS COMPLIANCE: ASSEMBLY VENDOR SHOULD ASSURE COMPLIANCE WITH LEAD-FREE AND RoHS PCB ASSEMBLY STANDARDS (EU RoHS DIRECTIVE 2002/95/EC).

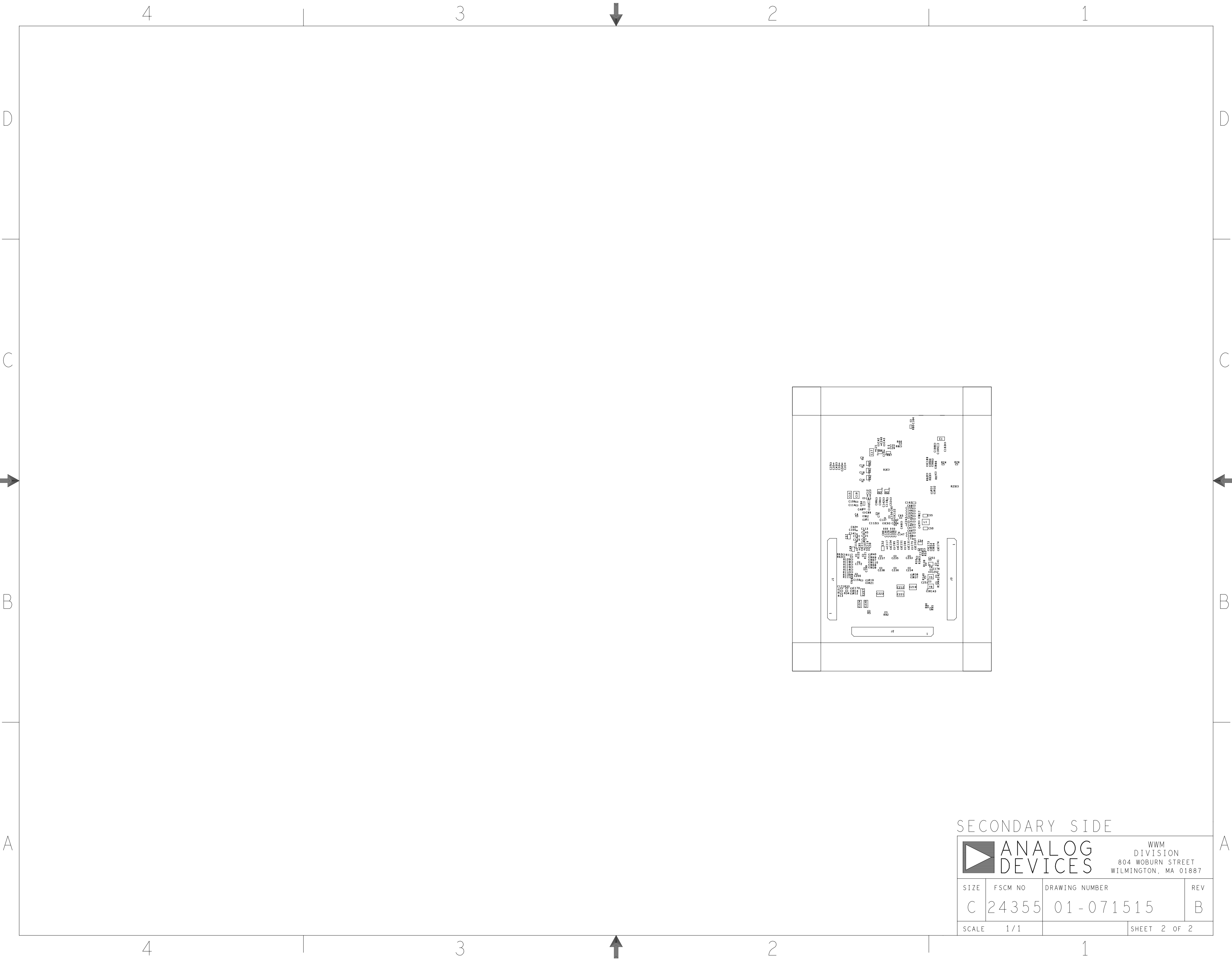


ESDA25P35-ASSY-DETAIL



PRIMARY SIDE

UNLESS OTHERWISE SPECIFIED DIMENSIONS ARE IN INCHES			APPROVAL		DATE		<div>ANALOG DEVICES</div> <div>WWM DIVISION 804 WOBURN STREET WILMINGTON, MA 01887</div>							
TOLERANCES			TEMPLATE ENGINEER											
DECIMALS	FRACTIONS	ANGLES	HARDWARE SERVICES M. VALE		24OCT22		TITLE ASSEMBLY ADSP21835W-EV-SOM CUSTOMER EVALUATION Z							
.XX	--.010	--1/32	HARDWARE SYSTEMS											
.XXX	--.005													
.XXXX	--.0050													
MATERIAL			TEST ENGINEER											
			COMPONENT ENGINEER D. TAMISEN		24OCT22									
			TEST PROCESS											
FINISH			HARDWARE RELEASE K. JABATAN		24OCT22		SIZE		FSCM NO		DRAWING NUMBER		REV	
			DESIGNER K. MOYO		24OCT22									
			PTD ENGINEER D. HARRINGTON		24OCT22									
DO NOT SCALE DWG			CHECKER				SCALE		1 / 1		SHEET		1 OF 2	



SECONDARY SIDE

<div><div><div></div></div><div><div>ANALOG</div><div>DEVICES</div></div><div><div>WWM</div><div>DIVISION</div><div>804 WOBURN STREET</div><div>WILMINGTON, MA 01887</div></div></div>			
SIZE	FSCM NO	DRAWING NUMBER	REV
C	24355	01-071515	B
SCALE	1 / 1	SHEET 2 OF 2	