


REVISIONS			
REV	DESCRIPTION	DATE	APPROVED
A	INITIAL RELEASE	05JUN23	P. SHARMA

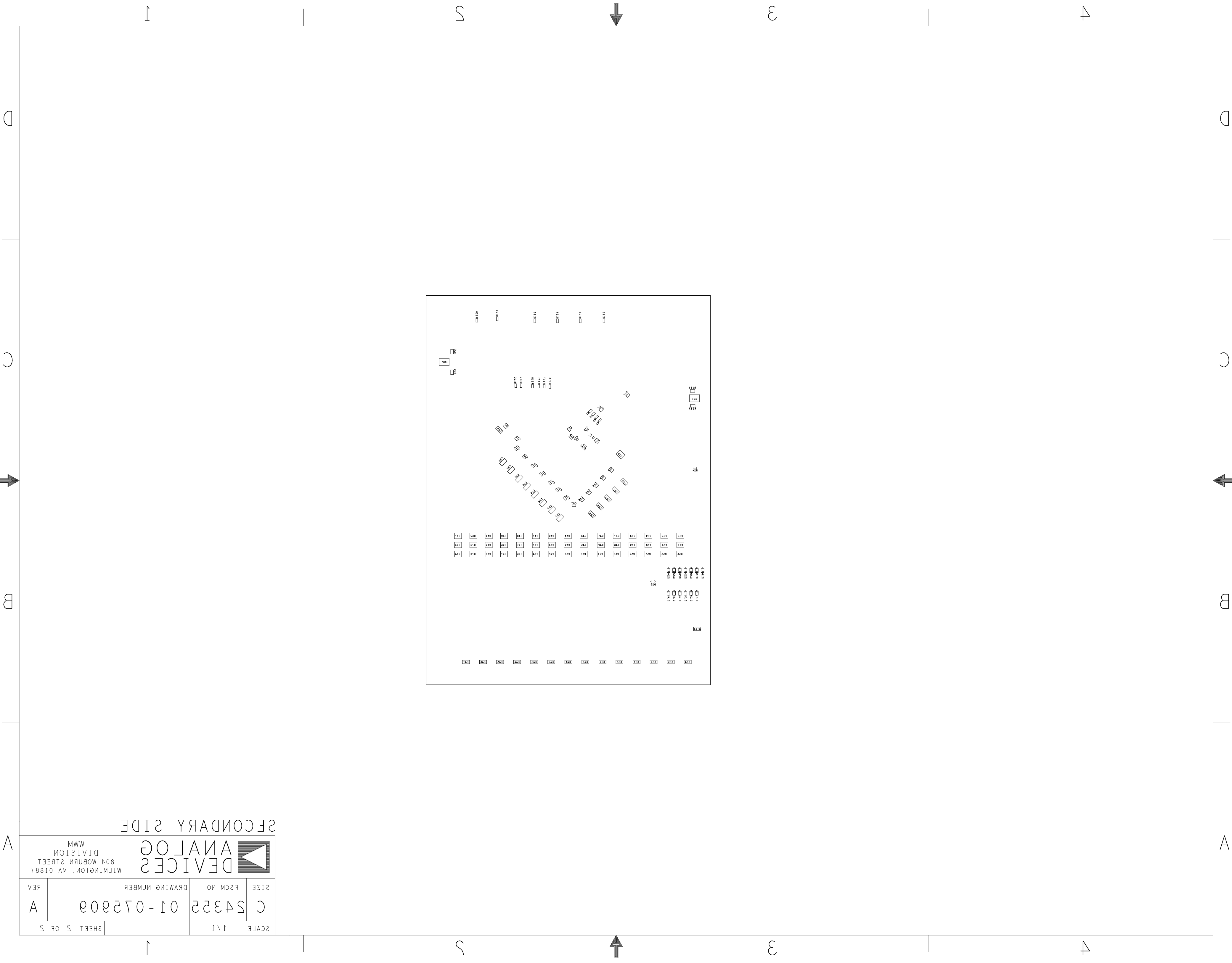
ASSEMBLY NOTES:

- BOARD ACCEPTABILITY PER ANALOG DEVICES, INC. SPECIFICATION TST00119 (LATEST REVISION).
- REPAIRS PER IPC-7711/21(LATEST REVISION) ARE ALLOWED.
- REPAIRS ARE NOT ALLOWED IN SOLDERMASK FREE AREAS ON EITHER SIDE OF THE BOARD.
- SMOOTHEN EDGES AND FREE FROM BURRS AFTER DEPANELIZATION PROCESS.
- INSTALL SCREW (M025339) ON PRIMARY SIDE AND STANDOFFS (M025474) ON SECONDARY SIDE.
- DEFAULT SETTINGS TO BE IN (ON) POSITION.
- INSTALL JUMPER SHUNT (M031256) ON LOCATIONS BELOW:
A. BOP-
B. P+B14
- RoHS COMPLIANCE: ASSEMBLY VENDOR SHOULD ASSURE COMPLIANCE WITH LEAD-FREE AND RoHS PCB ASSEMBLY STANDARDS (EU RoHS DIRECTIVE 2002/95/EC).

- ATTACH STICKER LABEL PER U1 COMPONENT BOM VARIANT DECLARATION:
* ADES1754EVKIT# FOR 05-075909-01
* ADES1755EVKIT# FOR 05-075909-02
* ADES1756EVKIT# FOR 05-075909-03
* ADES1752EVKIT# FOR 05-075909-04

PRIMARY SIDE

UNLESS OTHERWISE SPECIFIED DIMENSIONS ARE IN INCHES TOLERANCES DECIMALS FRACTIONS ANGLES .XX -.010 --1/32 -- 2 .XXX -.005 .XXX -.0050	APPROVAL TEMPLATE ENGINEER	DATE 05JUN23	 GLOBAL OPERATION & TECHNOLOGY 804 WOBURN STREET WILMINGTON, MA 01887	
	TEST ENGINEER			
MATERIAL	COMPONENT ENGINEER N. CATALAN	05JUN23	TITLE ASSEMBLY ADES175X_EVKIT_A CUSTOMER EVAL_Z	
FINISH	DESIGNER P. SHARMA	05JUN23		
	PTD ENGINEER P. SHARMA	05JUN23	SIZE C	FSCM NO 24355
	CHECKER		DRAWING NUMBER 01-075909	REV A
DO NOT SCALE DWG			SCALE 1/1	SHEET 1 OF 2



ANALOG DEVICES

WILMINGTON, MA 01887

804 WOBURN STREET

DIVISION

MWM

SCALE 1:1

SHEET 5 OF 5

REV A

DRAWING NUMBER 01-075009

SECONDARY SIDE

ANALOG DEVICES