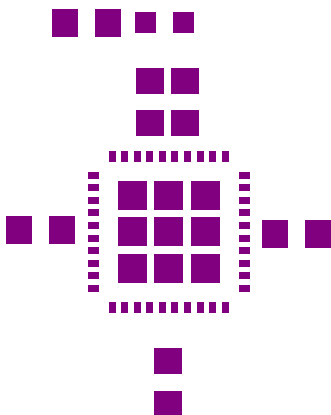
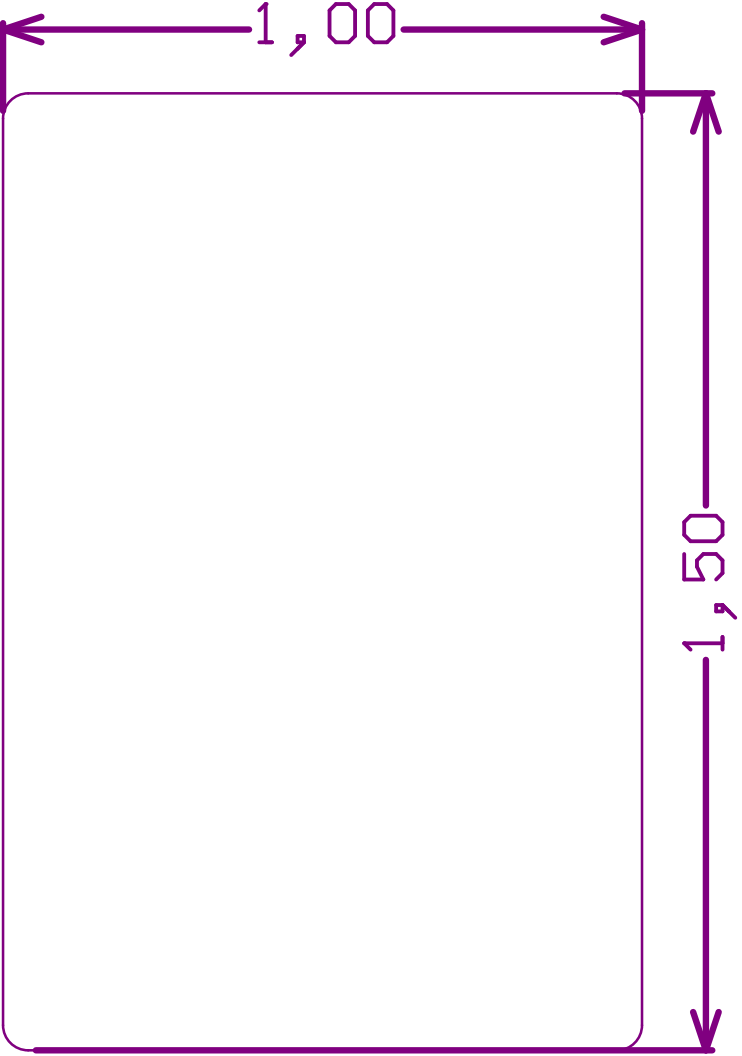


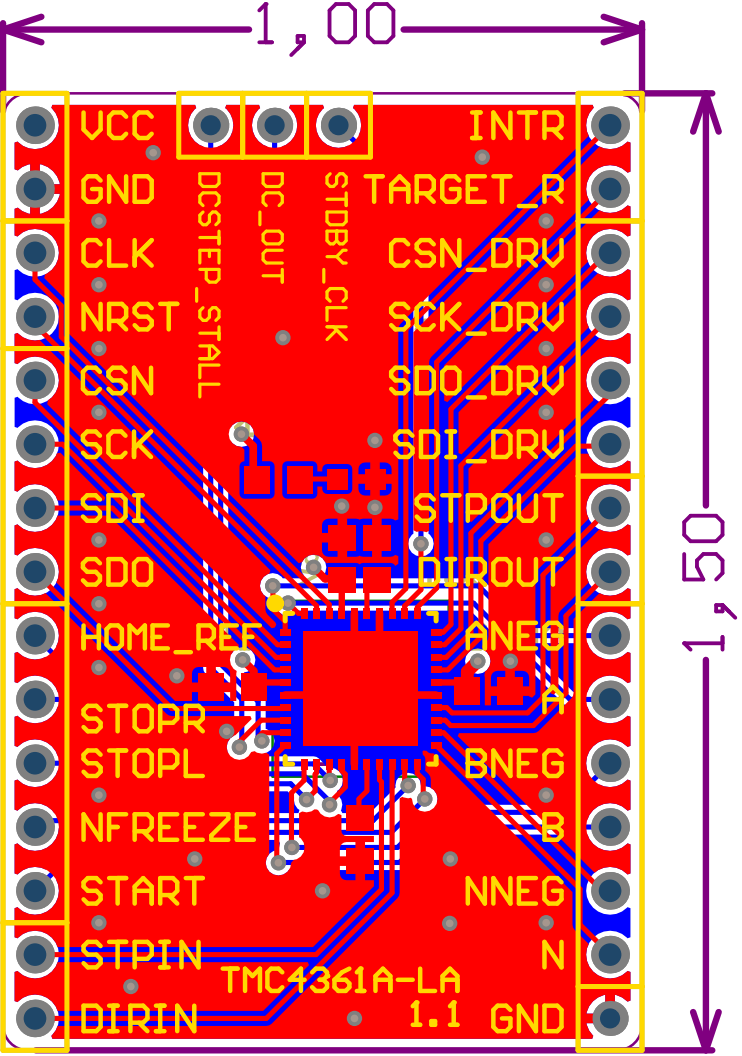
VCC	INTR
GND	TARGET_R
CLK	CSN_DRV
NRST	SCK_DRV
CSN	SDO_DRV
SCK	SDI_DRV
SDI	STPOUT
SDO	DIROUT
HOME_REF	ANEG
STOPR	A
STOPL	BNEG
NFREEZE	B
START	NNEG
STPIN	N
DIRIN	GND

INTR		VCC
TARGET_R		GND
CSN_DRV		CLK
SCK_DRV		NRST
SDO_DRV		CSN
SDI_DRV		SCK
STPOUT		SDI
DIROUT		SDO
ANEG	HOME_REF	
A		STOPR
BNEG		STOPL
B	NFREEZE	
NNEG		START
N		STPIN
GND		DIRIN

TMC4361A-LA_U1.1
 IC name: TMC4361A-LA
 Supply range: VCC = 3.3...5V





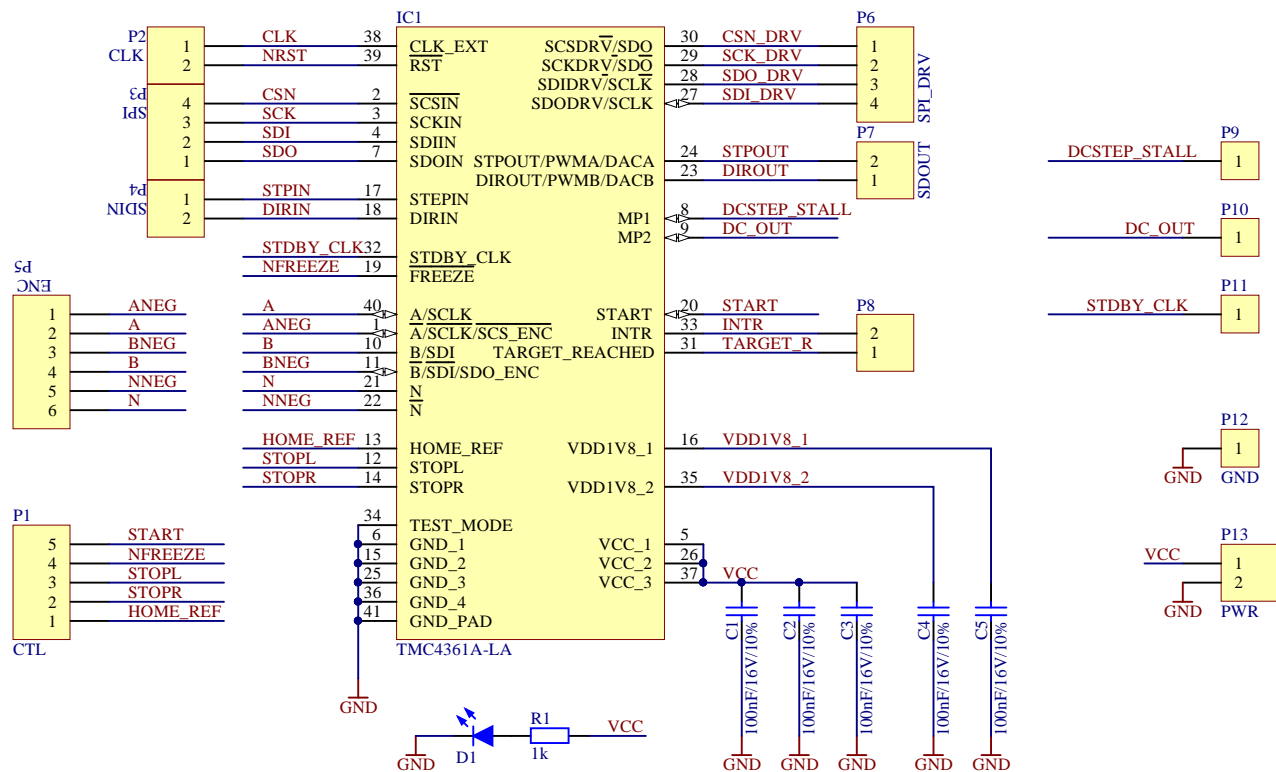


ChangeLog

V1.0 - Initial design

- V1.1 - Redesign and Optimization after 1st Round
- + Bottom side labels (IC Name, supply range):
TMC4361A-LA, VCC = 3.3...5V
 - + Changed silkscreen text width from 5mil to 7mil.
 - + Changed board name text height to 35mil.

Title			TMC4361A-LA		
Size		Number		Revision	
A4				1.1	
Date:		15.08.2017			Sheet of
File:		C:\Users\...\ChangeLog.SchDoc			Drawn By:

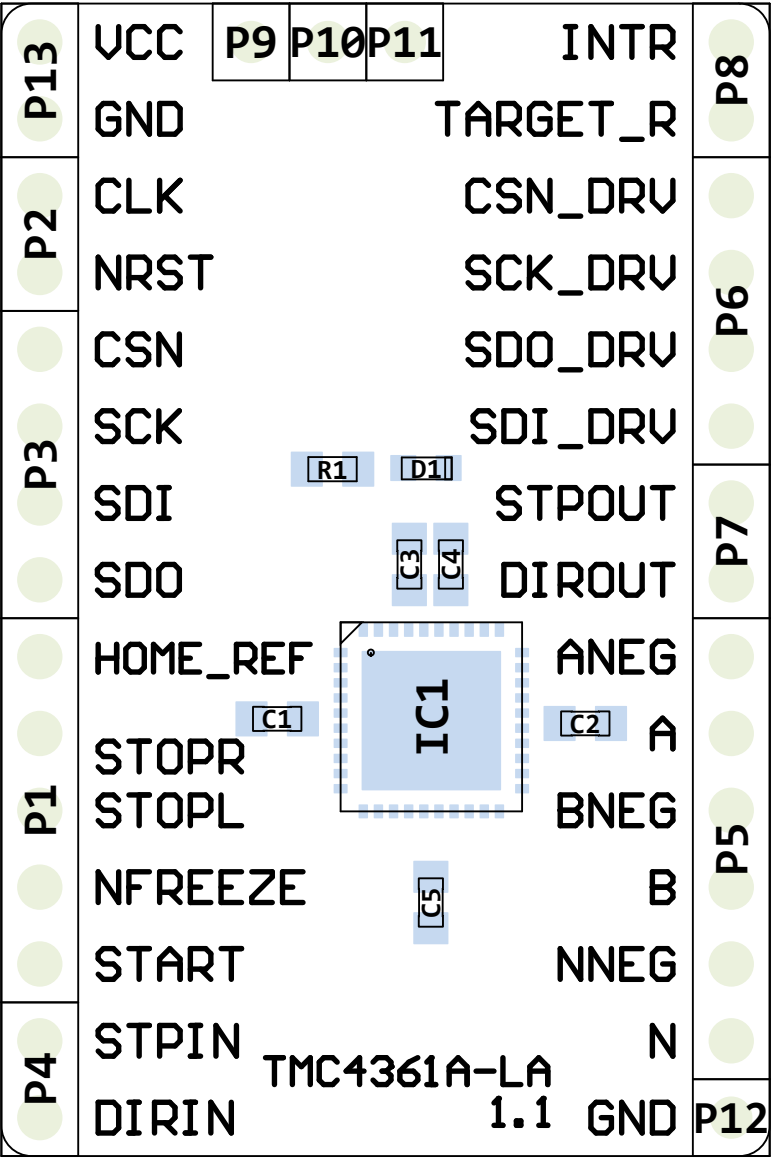


Title		
TMC4361A-LA		
Size	Number	Revision
A4		1.1
Date:	15.08.2017	Sheet of
File:	C:\Users\...\TMC4361A-LA_BOB_V1_1	SubDocBy:

1

1

View from Top side (Scale 4:1)



2

2

3

3

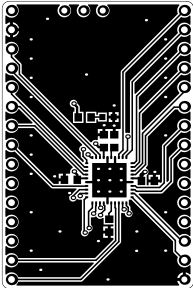
4

4

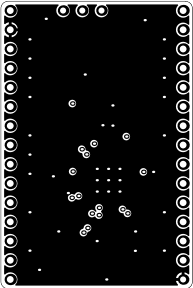
5

5

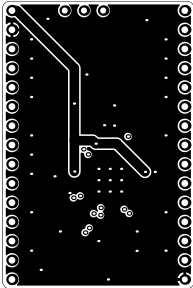
Top (Scale 1:1)



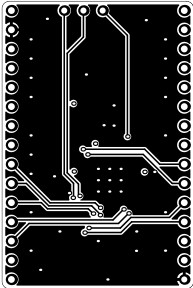
GND1 (Scale 1:1)



GND2 (Scale 1:1)



Bottom (Scale 1:1)



6

6

BOM

Project: TMC4361A-LA

Version: 1.1

Date: 15.08.2017

#	Quantity	MPN	Comment	Designator	Footprint	Description	Note	MF	
1	5	MC0603B104K160CT	100nF/16V/10%	C1, C2, C3, C4, C5	C0603	Ceramic capacitor		Multicomp	
2	1	LTST-C191TBKT-5A	LED, Blue, SMD, 20mA, 2.8V, 465 nm	D1	LED_0603	LED, Blue, SMD, 20mA, 2.8V, 465 nm		Lite-On	
3	1	TMC4361A-LA	TMC4361A-LA	IC1	TMC4361A-LA_QFN40_0.5_6.0X6.0	S-ramp motion controller for stepper motors with high velocities. With SPI and Step/Dir; QFN40(5x5)		TRINAMIC	
4	1	MC0063W060311K	1k	R1	R0603	1 kohm, 50 V, 0603 [1608 Metric], 63 mW, ± 1%, MC Series		MULTICOMP	
Approved			Notes						21

