

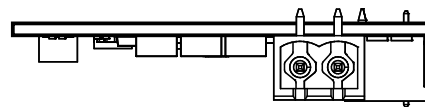
A

B

C

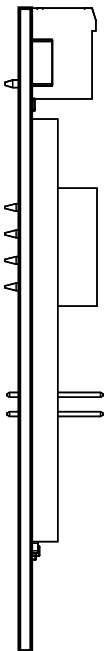
D

1



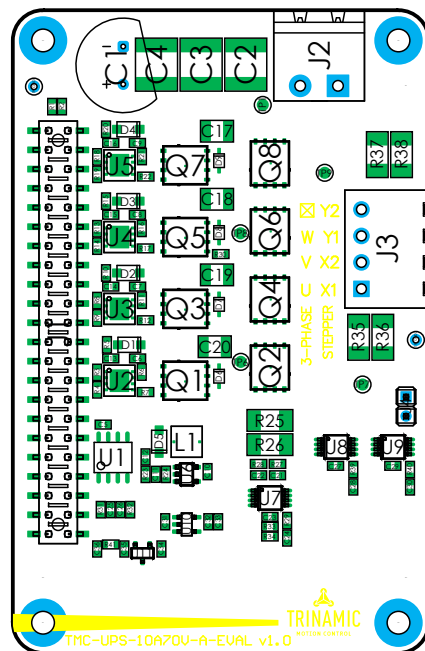
1

2

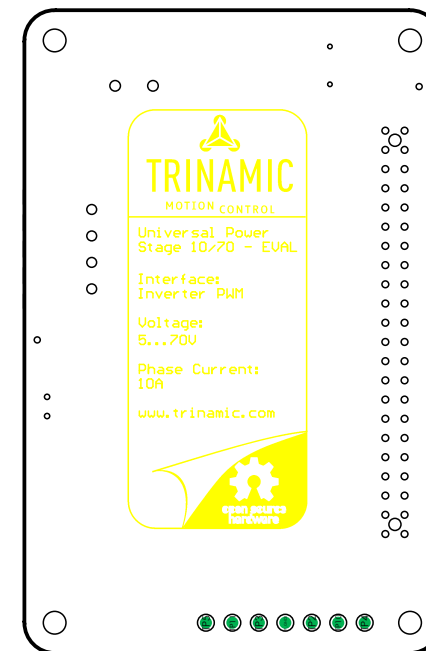
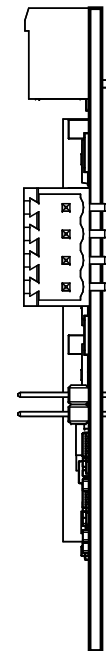


2

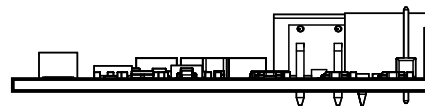
3



3



4



4

A

B

C

D

Title			Assembly Drawing		
Size A4	Revision V1.0	Project TMC-UPS 10A/70V A EVAL			
Date 15.04.2019	14:07		Sheet 1 of 2		
File TMC-UPS-10A70V-A-EVAL-V10-A.PCBDwf					



Waterloohain 5  
22769 Hamburg  
Germany  
tmc\_info@trinamic.com

The image shows the PCB layout of the TMC-UPS-10A70V-A-EV6L v1.0 board. The board is populated with various components, including a central 3-PHASE STEPPER motor driver section with components Q1-Q8, U1-U9, R1-R37, and J1-J3. It includes a large 28-pin connector at the bottom, a 4-pin header at the top, and various passive components like capacitors C1-C4, C17-C20, and resistors R1-R37. The board is marked with 'TMC-UPS-10A70V-A-EV6L v1.0' and 'TRINAMIC MOTION CONTROL'.

Title				Assembly Drawing			
Size	Revision		Project				
A4	V1.0		TMC-UPS 10A/70V A EVAL				
Date	15.04.2019		14:07		Sheet 2 of 2		
File	TMC-UPS-10A70V-A-EVAL-V10-A.PCBDwf						