

## LINEAR TECHNOLOGY CORPORATION

DC980A REV 2

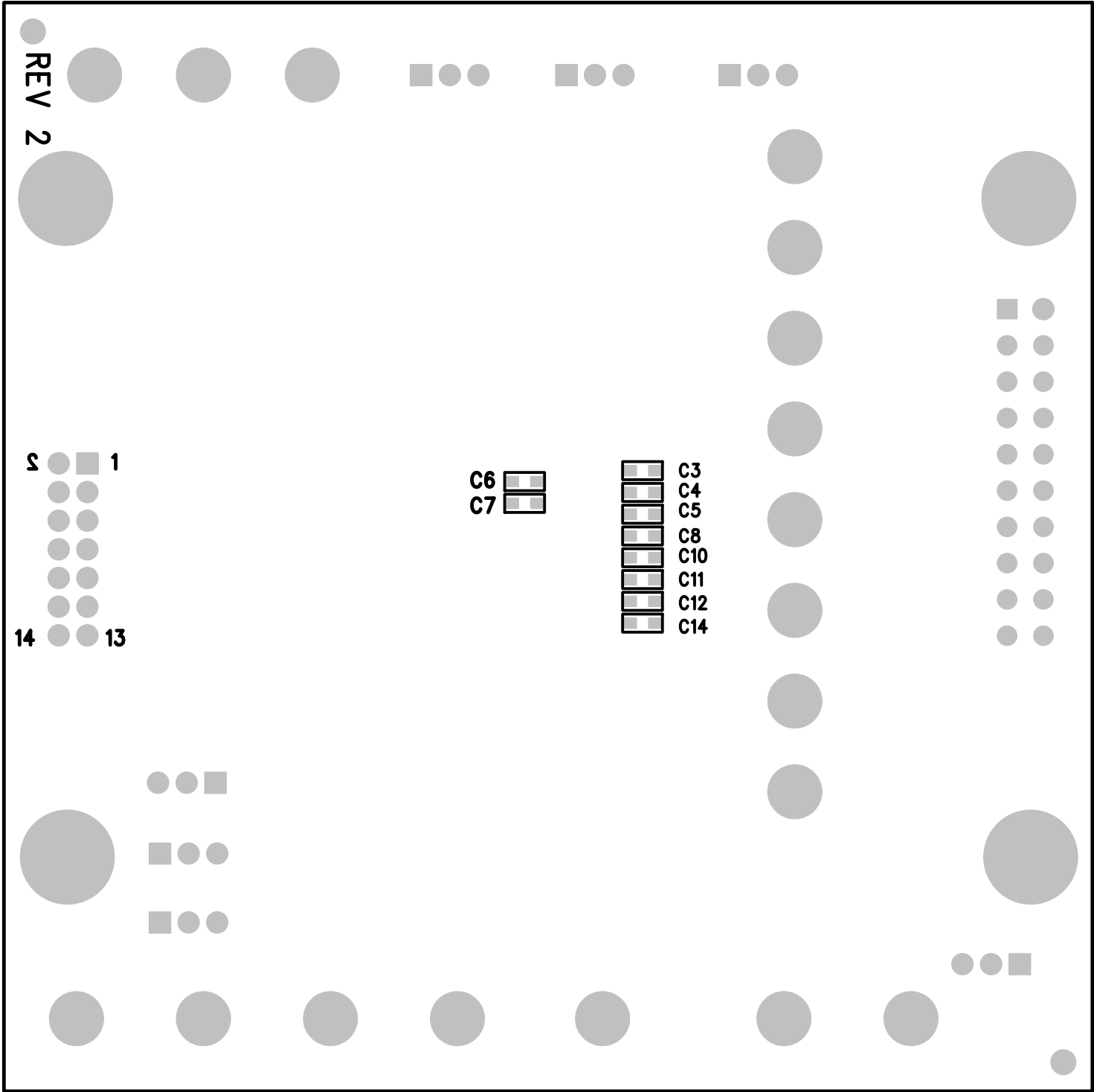
10/25/05

TOP SILKSCREEN

NOTES: Unless Otherwise Specified

1. BREAK BOARDS FROM THE PANEL WHEN ASSEMBLY IS COMPLETE.
2. JUMPER SHUNTS INSTALLATION:

JP1: HI	JP4: ON	JP7: DC590A
JP2: HI	JP5: GND	
JP3: GND	JP6: GND	



**BTTM SILKSCREEN**

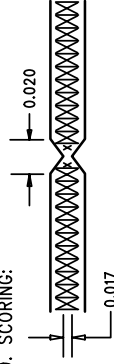
LINEAR TECHNOLOGY CORPORATION

DC980A REV 2

10/25/2005

NOTES: UNLESS OTHERWISE SPECIFIED,

1. ARTWORK P/N DC980A REV 2.
2. FAB PER IPC-A-600
3. MATERIAL: EPOXY FIBERGLASS, NEMA GRADE FR-4  
    .062 +/- .005 INCH THICKNESS WITH 2 OZ.  
    COPPER FINISH ON TWO OUTER LAYERS AND  
    1 OZ. COPPER ON TWO INTERNAL LAYERS.  
    FLAMABILITY RATING: 94 V-2 MINIMUM .
4. SIZE: CUT TO DIMENSIONS AND TOLERANCES SHOWN.  
    0.00 ARE PRIMARY DATUMS.
5. BOARD: SELECTIVE PLATED BOARD. SOLDER  
    MASK OVER BARE COPPER, COLOR, GREEN LPI.  
    WHITE TIN IMMERSION (OMIKRON) BOTH SIDES.  
    SILKSCREEN COMPONENT SIDE WITH WHITE  
    NON-CONDUCTIVE INK.
6. DRILL: PLATE THRU ALL HOLES WITH COPPER  
    MIN. PLATING THICKNESS: 1 OZ. EXCEPT  
    WHERE PLATING NOT REQUIRED  
    ALL HOLES SHALL BE DRILLED +/- .003 INCH  
    WITH RESPECT TO CTR. OF DRILLED PAD.  
    ALL HOLES FINISHED SIZE AFTER PLATING.
7. DROP ALL UNUSED PADS ON INNER LAYERS.
8. DO NOT ALTER ARTWORK e.g. TO ADD LOGO OR DATE



SIZE	QTY	SYM	PLATED	TOL
10	73	✕	YES	+/-0.003
35	35	□	YES	+/-0.003
40	20	† <sup>A</sup>	YES	+/-0.0
70	2	◇	NO	+/-0.003
94	18	⊗	YES	+/-0.003
187	4	+	YES	+/-0.0

UNLESS OTHERWISE SPECIFIED  
DIMENSIONS ARE IN INCHES  
TOLERANCES ON ANGLE  $\pm 1^\circ$   
2 PLACE  $\pm .01$  3 PLACE  $\pm .005$   
INTERPRET DIM AND TOL  
PER ASME Y14.5M - 1994

**CONTRACT NO.**

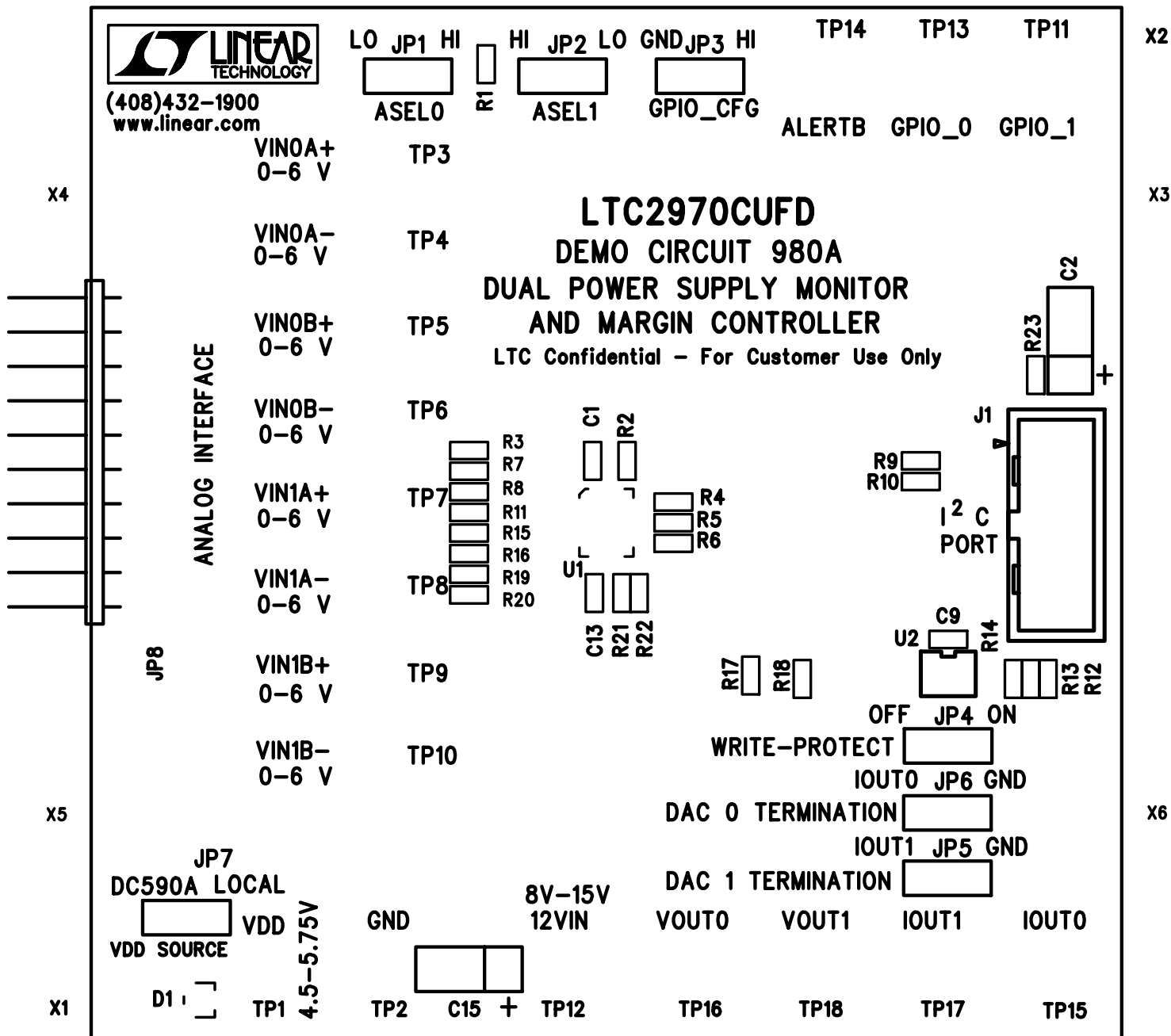
	APPROVALS	DATE
DRAWN	Chris Pollard	10/25/05
CHECKED		
APPROVED		
DESIGNED BY		



1630 McCarthy Blvd.  
Milpitas, CA 95035  
Phone: (408) 432-1900  
Fax: (408) 434-0507

FAB, LTC2970CUFD, DUAL POWER SUPPLY  
MONITOR AND MARGIN CONTROLLER

SIZE A	CAGE CODE	DWG NO.	REV 2
SCALE 1/1	FILENAME:		SHEET 1 OF 1
DC980A			

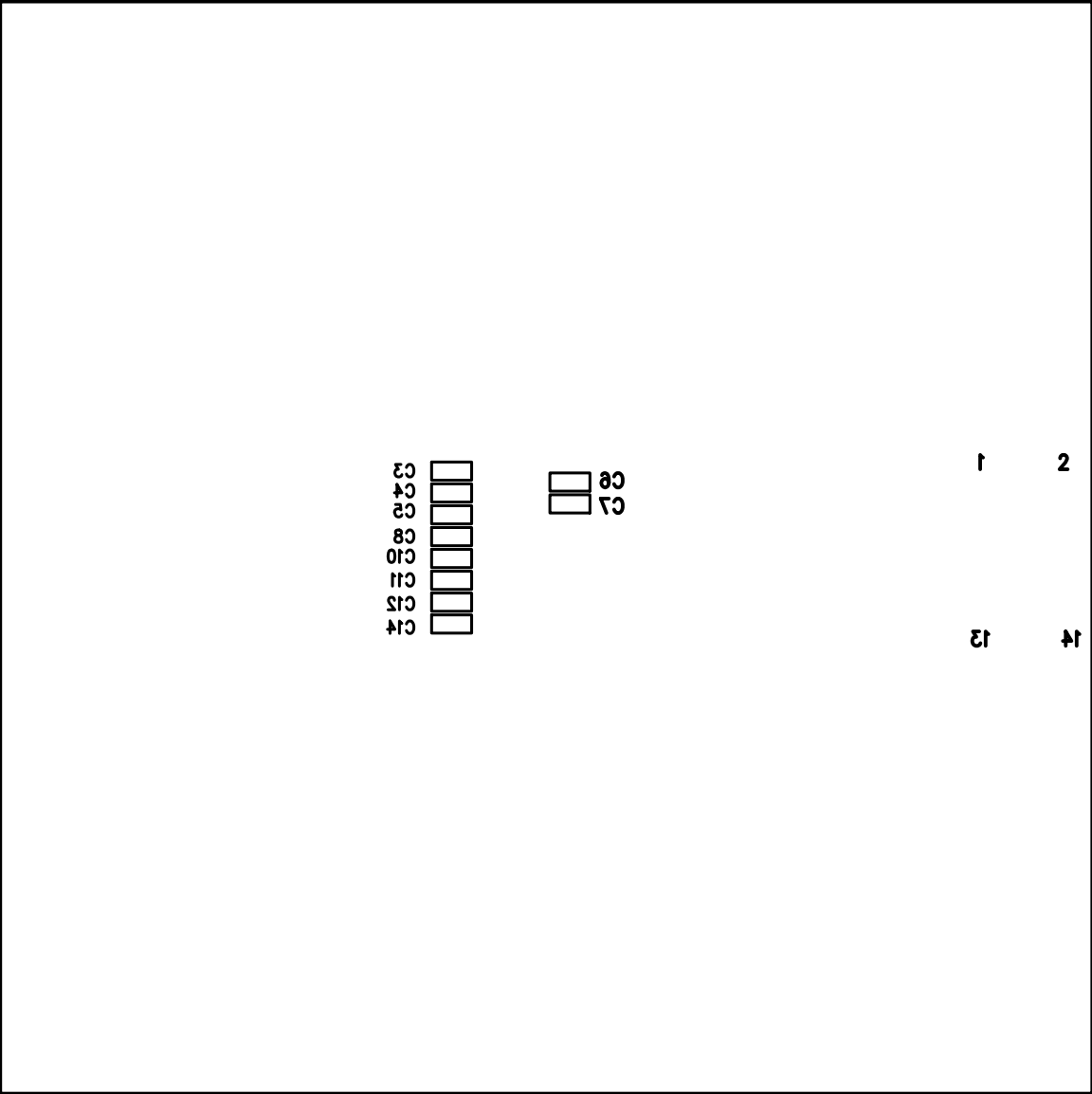


**LINEAR TECHNOLOGY CORPORATION**

**TOP SILKSCREEN**

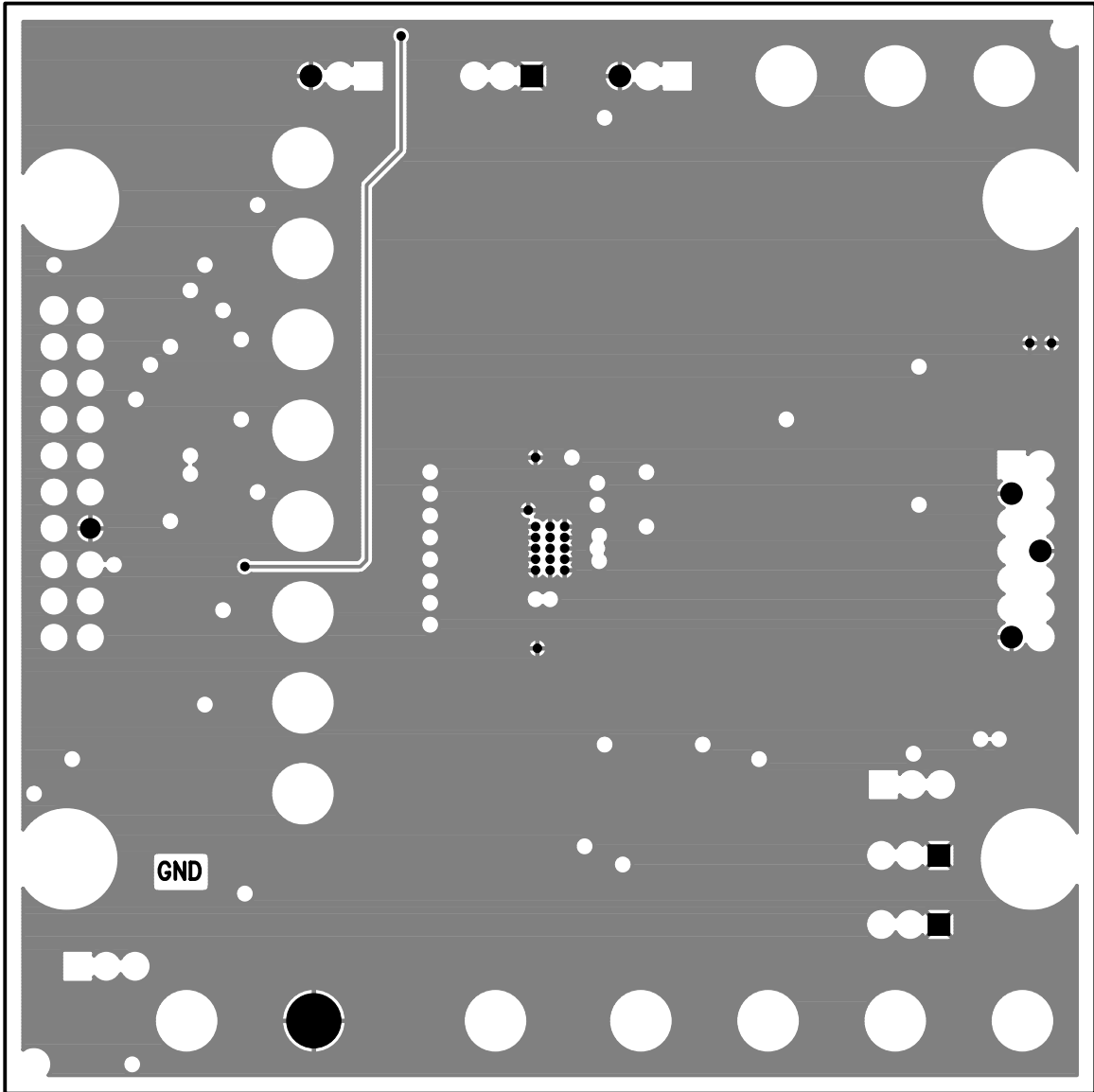
**DC980A REV 2**

**10/25/05**



LINEAR TECHNOLOGY CORPORATION  
DC980A REV 2  
10/25/05

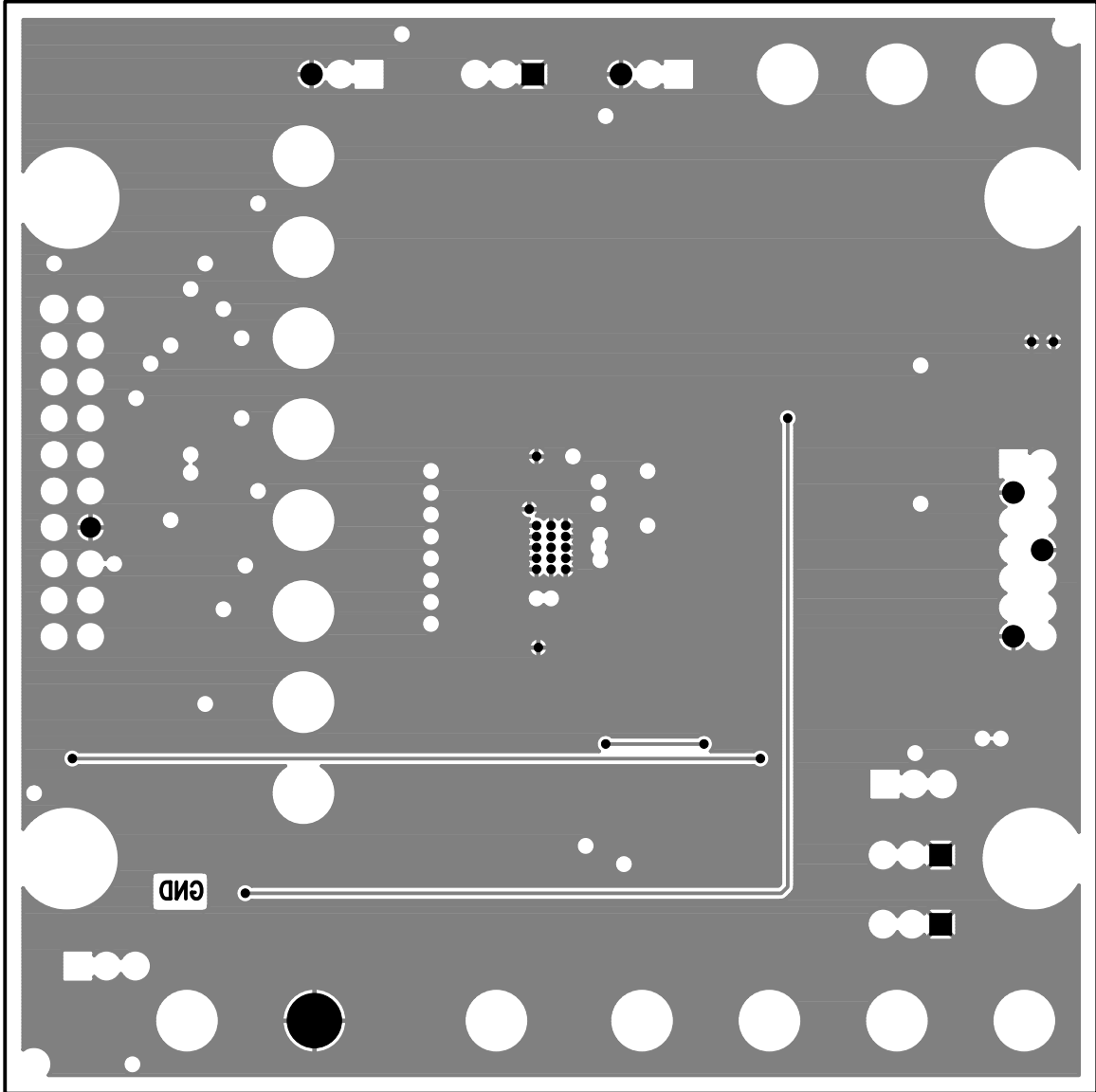
BTMM SILKSCREEN



**LINEAR TECHNOLOGY CORPORATION**

DC980A REV 2  
10/25/05

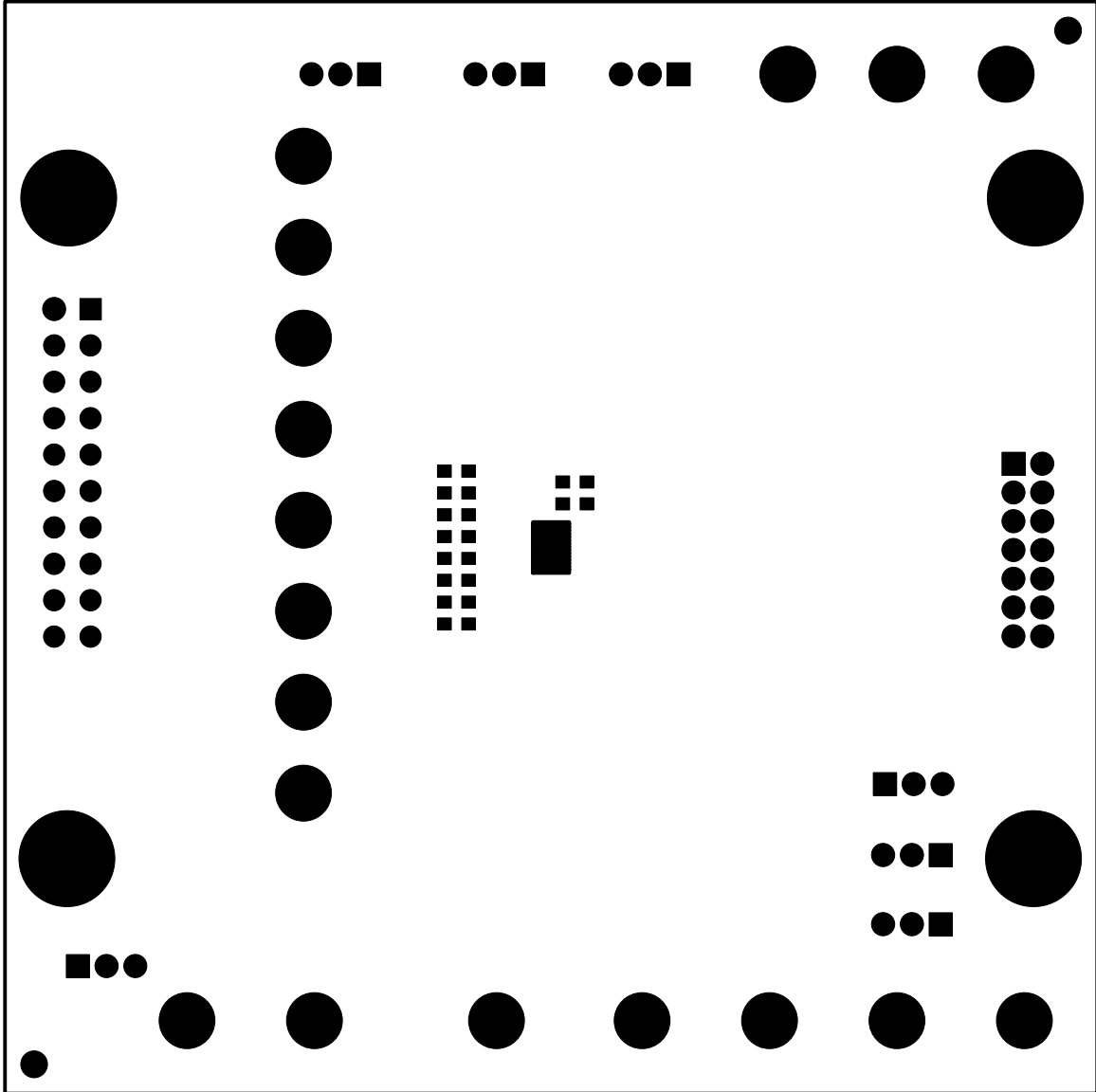
L2-GND LAYER



**LINEAR TECHNOLOGY CORPORATION**

DC980A REV 2  
10/25/05

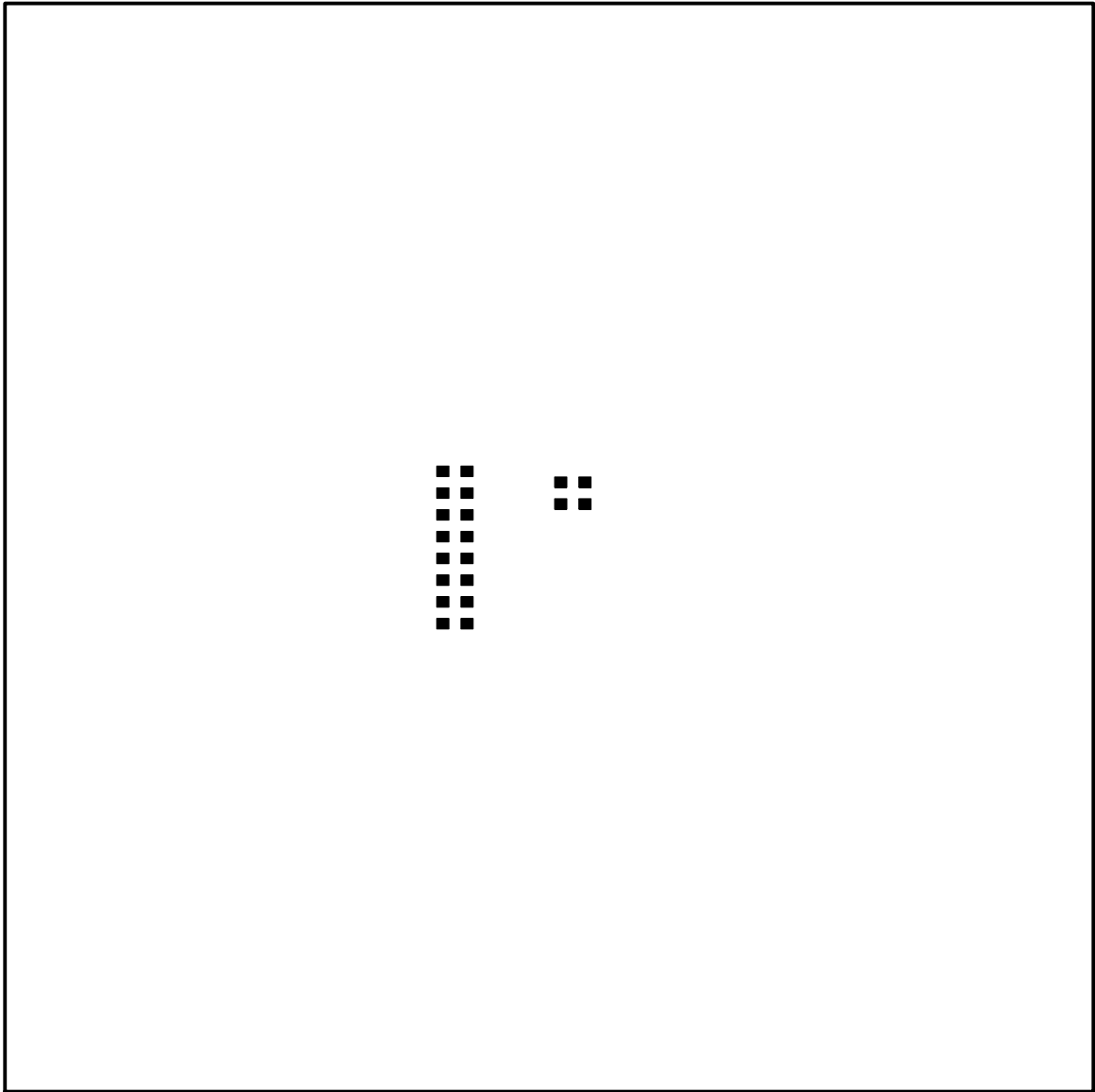
L3-GND LAYER



LINEAR TECHNOLOGY CORPORATION  
DC980A REV 2  
10/25/05

BLTM 20LDERM2K

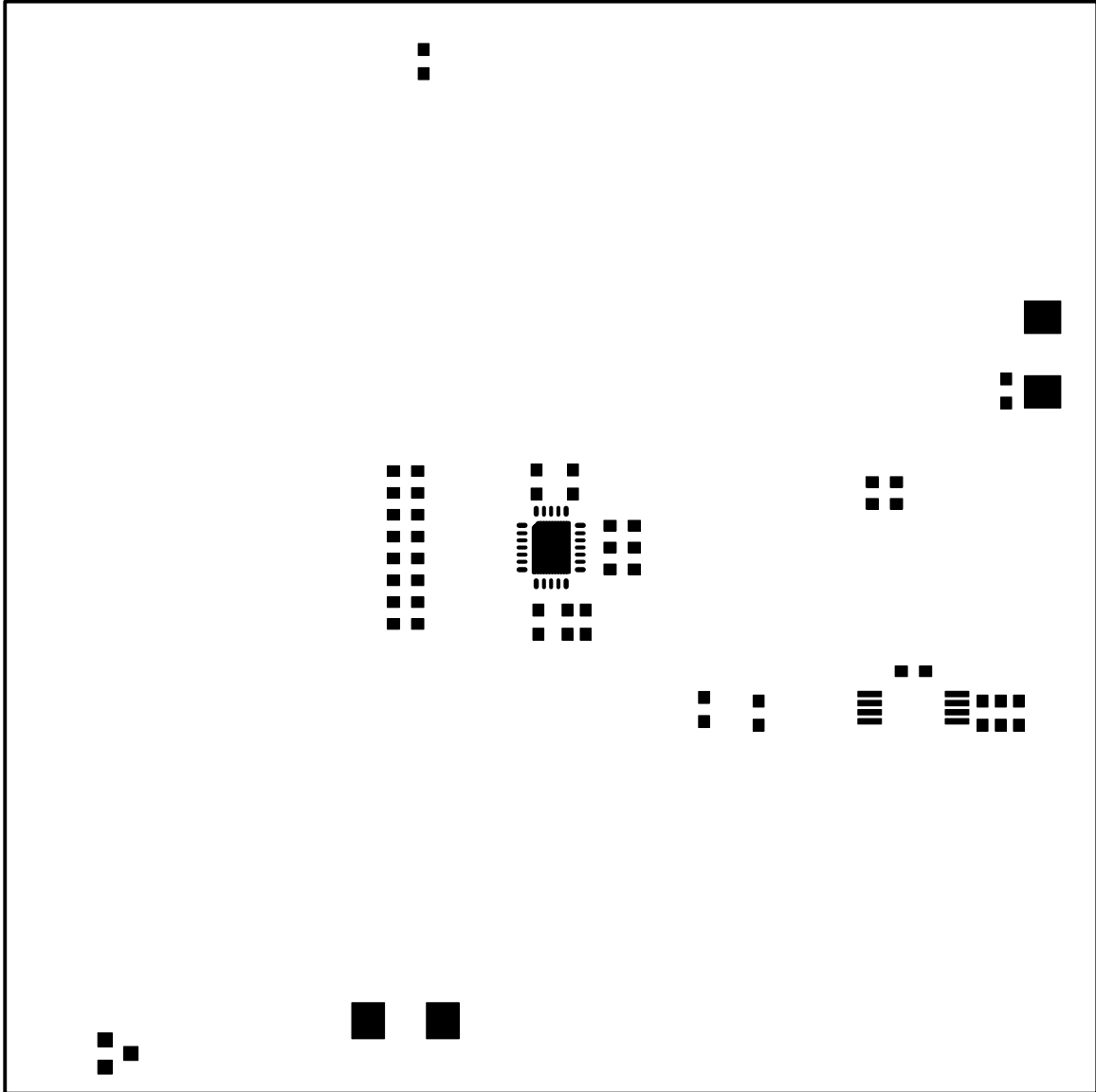




LINEAR TECHNOLOGY CORPORATION

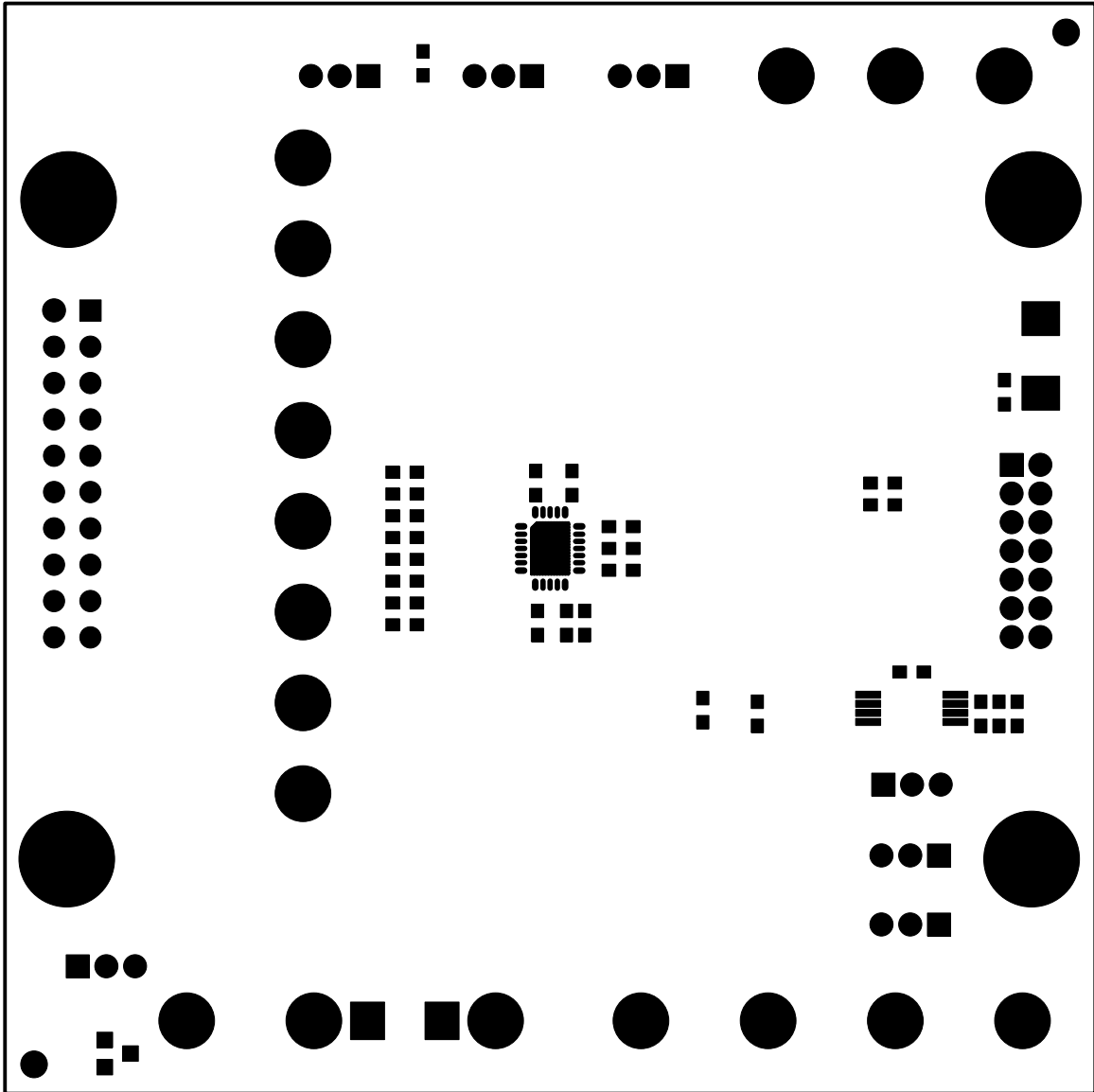
DC980A REV 2  
10/25/05

BTLM PASTB



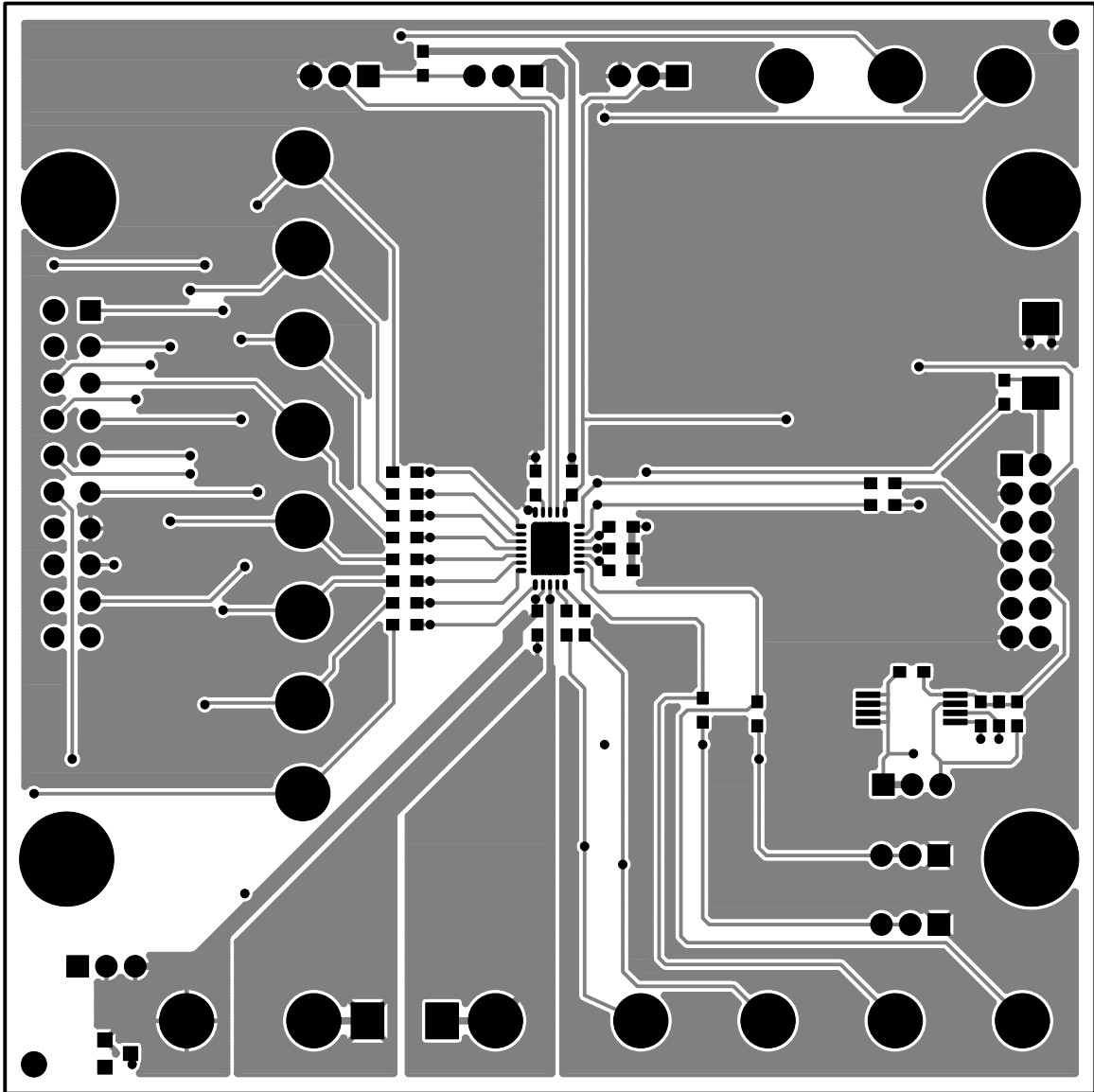
LINEAR TECHNOLOGY CORPORATION  
DC980A REV 2  
10/25/05

TOP PASTE



LINEAR TECHNOLOGY CORPORATION  
DC980A REV 2  
10/25/05

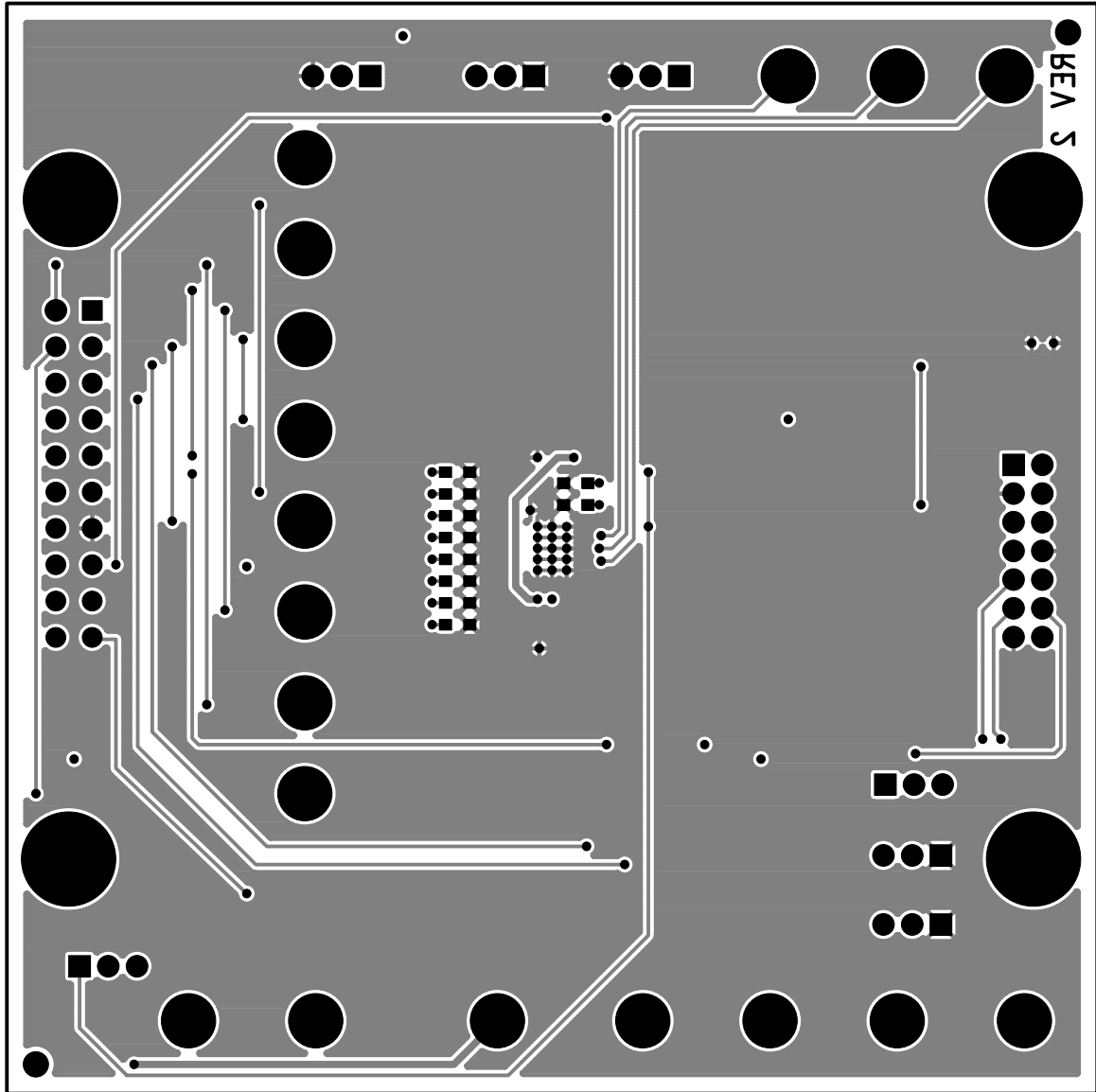
TOP SOLDERMASK



LINEAR TECHNOLOGY CORPORATION

DC980A REV 2  
10/25/05

L1-COMPONENT SIDE



**LINEAR TECHNOLOGY CORPORATION**

DC980A REV 2  
10/25/05

L4-BOTTOM LAYER