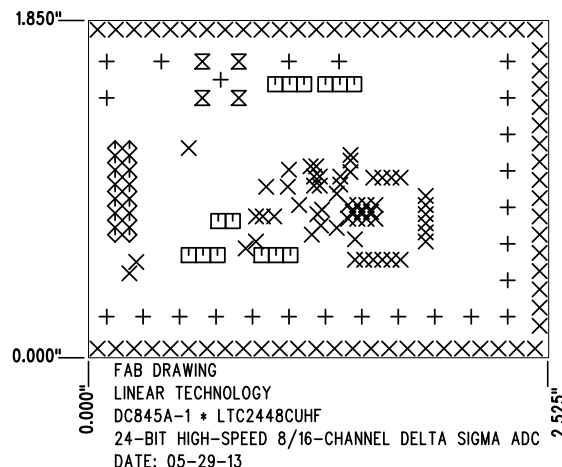
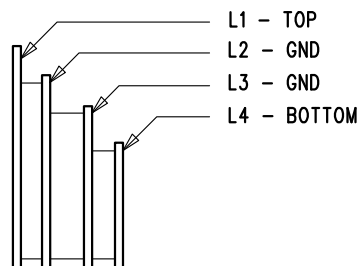


REVISION HISTORY				
ECO	REV	DESCRIPTION	APP. ENG.	DATE
-	1	PRODUCTION	MARK T.	05-29-13

SHOWN FROM TOP SIDE



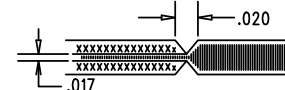
LAYER STRUCTURE




SIZE	QTY	SYM	PLATED	TOL
0.065	25	+	YES	+/-0.003"
0.01	123	X	YES	+/-0.003"
0.04	14	□	YES	+/-0.003"
0.035	14	◇	YES	+/-0.003"
0.072	4	⊗	YES	+/-0.003"

NOTES: UNLESS OTHERWISE SPECIFIED

- FAB PER IPC-A-600.
- MATERIAL: -LEAD FREE ASSEMBLY COMPLIANT, ISOLA FR-370HR OR EQUIVALENT.
-FINISHED THICKNESS TO BE 0.062" +/- .005"
-TOTAL OF 4 LAYERS WITH 2 OZ. CU ON THE OUTER LAYERS AND 2 OZ. CU ON THE INNER LAYERS.
-FLAMMABILITY RATING: 94 V-0 MINIMUM.
- SIZE: CUT TO DIMENSIONS AND TOLERANCES SHOWN.
0.00" ARE PRIMARY DATUMS.
- DRILLING: -DRILL HOLES PER SCHEDULE. PLATE THROUGH HOLES WITH COPPER, 0.001" THICK MIN.
-ALL HOLE SIZES ARE SPECIFIED AFTER PLATING.
-HOLE LOCATION TOLERANCES ARE +/-0.003" IN RELATION TO CENTER
- FINISH: -SMOBC USING LPI BOTH SIDES, COLOR GREEN.
-GOLD IMMERSION BOTH SIDES.
-FOR SILKSCREENS: USE WHITE NON-CONDUCTIVE INK.
- DO NOT ALTER ARTWORK e.g. TO ADD LOGO OR DATE CODE. PAD SIZE CAN BE MODIFIED TO MEET END FINISH.
- PCBS ARE TO BE RoHS COMPLIANT.
- SCORING FOR PANELIZED PCB (PRODUCTION FAB ONLY):



UNLESS OTHERWISE SPECIFIED		APPROVALS		 1630 MCCARTHY BLVD MILPITAS, CA 95035 PH: (408)432-1900 www.linear.com LTC CONFIDENTIAL- FOR CUSTOMER USE ONLY	
DIMENSIONS ARE IN INCHES TOLERANCES: 0.XX" = ±0.01" 0.XXX" = ±0.005" INTERPRET DIM AND TOL PER ASME Y14.5M-1994 THIRD ANGLE PROJECTION		PCB DES.	KIM T.		
		APP ENG.	MARK T.	TITLE: FABRICATION DRAWING	
				24-BIT HIGH-SPEED 8/16-CHANNEL DELTA SIGMA ADC	
				SIZE	IC NO.
				N/A	LTC2448CUHF
					DEMO CIRCUIT 845A
				REV	1
		SCALE = NONE		FILENAME:	DC845A-1.PCB
				SHT	1 OF 1